

Amyuni Document Converter

Version 4.0 Professional

Quick Start Guide

Updated March, 2009

AMYUNI Consultants – AMYUNI Technologies

www.amyuni.com

Contents

Legal Information.....	3
<i>Important Note for developers</i>	3
Acknowledgments	3
New In Version 4.0.....	4
Performance Features Include:	4
Graphics Features Include:	4
Introduction.....	5
Using the Developer Version of the Document Converter Products.....	6
Using the Developer Version of the Amyuni Converter.....	7
Sample.....	7
<i>Important Note for developers</i>	8
DLL Interface.....	9
ActiveX Interface.....	9
<i>Note to VB Users</i>	10
Note on Function Calls.....	11
ActiveX Methods.....	11
DLL Methods.....	11
Links to Support and Documentation:	12
Online Documentation:.....	12
Frequently Asked Questions:.....	12
Technical Notes:.....	12
User forum:	12
Posting questions to our technical support staff:.....	12

Legal Information

Information in this document is subject to change without notice and does not represent a commitment on the part of AMYUNI Technologies. The software described in this document is provided under a license agreement or nondisclosure agreement.

The software may be used or copied only in accordance with the terms of the agreement. It is against the law to copy the software on any medium except as specifically allowed in the license or nondisclosure agreement.

The licensee may make one copy of the software for backup purposes. No part of this guide may be reproduced or transmitted in any form or by any means, electronic or mechanical, including photocopying, recording, or information storage and retrieval systems, for any purpose other than the licensee's personal use, without express written permission of AMYUNI Technologies.

Copyright 2000-2008, AMYUNI Consultants – AMYUNI Technologies. All rights reserved.

Amyuni and the Amyuni logo are trademarks of Amyuni Technologies Inc. Adobe, the Adobe logo, Acrobat, the Acrobat logo are trademarks of Adobe Systems Incorporated.

Microsoft, the Microsoft logo, Microsoft Windows, Microsoft Windows NT and their logos are trademarks of Microsoft Corporation.

All other trademarks are the property of their respective owners.



Important Note for developers

The activation code that is provided to you by Amyuni should be kept confidential and not be revealed to end-users, even in this case where the developer's products are sub-licensed to other developers.

Acknowledgments

This software uses the deflate algorithm developed by Jean-loup Gailly (jloup@gzip.org) and Mark Adler (madler@alumni.caltech.edu). This software is also based in part on the work of the Independent JPEG Group and on parts of the FreeType library.

New In Version 4.0

Certification for Windows 2008, Windows 7 compatible.

Generation of layered PDF files for CAD and other applications.

The generation of industry standard PDF/X-1 and PDF/X-3 PDF files.

SMTP email authentication capabilities.

Support for a wider range of PDF files such as the PDF 1.7 format and the compressed XRef table format.

The addition and extraction of attachments to and from PDF files.

Exporting capabilities of PDF files into XAML in order to view from a Web page with Silverlight controls.

Updated PDF/A engine ensures Acrobat 9 compatibility.

Logging capabilities to ensure detailed detection and warning of errors during the processing of PDF files.

Improved support for CJK languages and custom CMAPs.

Resaving capabilities of PDF files using PDF 1.4, 1.5, or PDF/A formats.

The generation of PDF/A-1a and PDF/A-1b files with embedding of custom XMP metadata.

Support for Unicode strings for the selection of digital signatures.

Performance Features Include:

Improved file processing speed of PDF files that contain large graphics.

Improved file loading capabilities from network drives.

Reduced memory consumption during the processing of large numbers of pages.

Reduced output file size through better page compression and reduced embedded font size.

Improved performance and reliability of Merge operations.

Graphics Features Include:

JPEG2000 compression in addition to the existing image decompression.

Delayed loading of JPEG and PNG images until they are required. This delay improves performance and memory usage during PDF processing.

Improved performance of graphics library for faster decompression of CCITT and JBIG2 images.

Improved support for transparencies and alpha-blending techniques.

Introduction

This manual is a supplement to the Amyuni Document Converter series of products. These include the PDF, HTML, RTF, Excel, TIFF, and JPeg Converter products or any combination of these formats. Each of these products ships with a user's manual that describes the overall operation of the product. The developer should be familiar with the operation of the specific product that he or she is using before reading the developer's manual.

All Amyuni Document Converter products share the same interface DLL named the "Common Driver Interface". This interface resides in a DLL named **CDINTF300.DLL** that should be in the system or system32 directory.

CDINTF300 provides the developer with three calling conventions. Depending on their development platform and programming habits, developers might chose one these three interfaces:

- A standard DLL interface.

- An ActiveX interface.

- A .NET Managed Code Interface.

Using the Developer Version of the Document Converter Products

The developer version of the Amyuni Document Converter products is a special version of these products that can be distributed with the developers' applications without paying any additional royalties to Amyuni Technologies.

By special version, we mean a version that:

- Does not need to be pre-installed on the client system (although recommended).

- Does not have any properties dialog box.

- Does not have any "File Save As" dialog box.

All printer configurations, file destinations and options settings should be done programmatically by the main application.

Using the Developer Version of the Amyuni Converter

The following is a step-by-step procedure for using the developer version of the Amyuni Converter.

1. Copy all distributable files to the application's main directory

The application's main directory is usually where the executable file is located. The list of distributable files is as follows:

4. Register the **CDIntf** ActiveX. When using the ActiveX interface, the ActiveX control should be registered in the system by calling **RegSvr32** from the system directory: **REGSVR32 CDINTF400.DLL**.

CDIntf can be used through the DLL convention without the need for registering or creating ActiveXs.

5. Initialize the printer at start-up of your application. Initialize the printer, you need to call **DriverInit** followed by the printer name. When using method 2 outlined above to install the printer, **DriverInit** is replaced with **PDFDriverInit**.

Note that all the functions **PDFDriverInit**, **HTMLDriverInit** and **RTFDriverInit** are exactly the same in version 2.1 of the product.

6. Export to the format of your choice by printing from your application. When the user chooses the export function of your application to generate a PDF, HTML, RTF, JPEG, TIFF or Excel file, you need to set up the output file name using **SetDefaultFileName**, the file generation options

SetFileNameOptions(NoPrompt + UseFileName + ...) and print to the "My Company Printer" as you would do when printing to any other printer. The developer can be in one of three situations:

- The developer licensed a product that generates only one format, e.g. PDF only or RTF only. In this case, the printer will generate the right format without any specific option to set.
- The developer licensed a product that generates multiple formats including PDF, e.g. PDF and RTF. In this case, to export to either RTF, HTML, JPEG, TIFF or Excel, the corresponding option should be set in the call to **SetFileNameOptions**. The PDF file will be generated in all cases and should be deleted by the developer if not needed. There is no method to have the Converter generate an RTF/HTML/JPEG/TIFF/Excel file only without generating PDF.
- The developer licensed a product that generates multiple formats excluding PDF, e.g. RTF and HTML. In this case, to export to either RTF, HTML, the corresponding option should be set in the call to **SetFileNameOptions**. A temporary file will be generated in all cases and will be deleted by the printer when the print job is finished.

7. Restore the printer to its previous setting. When printing is over, the developer needs to call **SetFileNameOptions** (0) to prevent other applications or users from overwriting the file that has just been generated from the application.

8. Uninitialize the printer before exiting. Before exiting the application, the **DriverEnd** function should be called. This function will remove the printer if installed using **PDFDriverInit**, otherwise it will simply disconnect from the printer.



Important Note for developers

To avoid confusion with other applications and with the single-user versions of the Document Converter products, developers are required to use a printer name specific to their application or company. Using the default printer names of "Amyuni Document Converter" or "Amyuni PDF Converter" is not allowed. The activation code that is provided to you by Amyuni should be kept confidential and not be revealed to end-users, even in this case where the developer's products are sub-licensed to other developers.

DLL Interface

Before using the DLL interface of **CDINTF400**, the C or C++ developer might need to download the header and library files from:

<http://www.amyuni.com/downloads/cdintf400.zip>

The zip file also contains the latest version of **CDIntf400.DLL**.

The library file is compatible with Visual Studio 6. When using other compilers such as Borland C++, the developer needs to import the library from the DLL instead of using the library from our “downloads” section.

Visual Basic users can import the included **CDIntf300.txt** file to get the entire constant and function declarations of **CDIntf300**. VB users are encouraged however to use the ActiveX interface as it remains more versatile and easier to use from within VB.

ActiveX Interface

Before using the Common Driver Interface as an ActiveX component from any ActiveX aware application, the developer should register the DLL in the system by calling **RegSvr32** from the location where this DLL is installed:

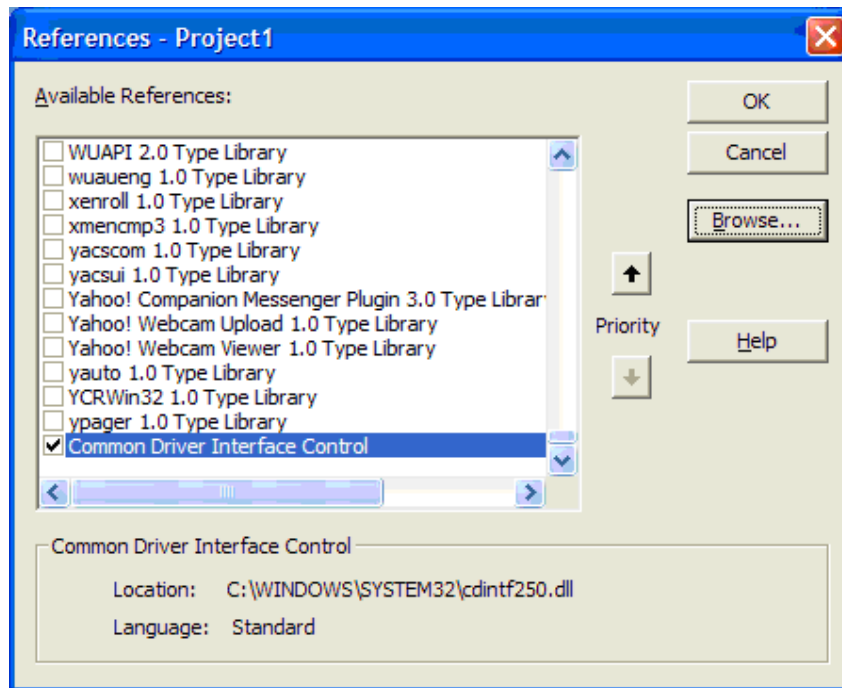
Regsvr32 CDINTF300.DLL

This is done automatically by the default installation procedure of any of the document converter product.

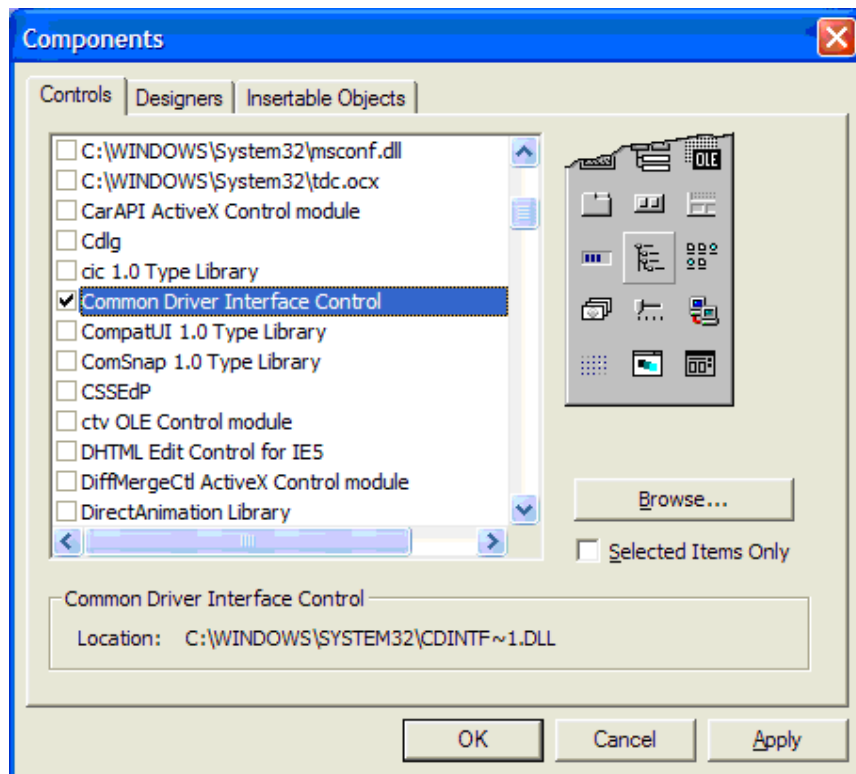
The **CDIntf** control starting with version 2.1 has been renamed to **CDIntfEx** to avoid confusion with the previous versions. The control can either be created dynamically through code or placed on a form like any other VB control. When placed on a form, the control remains invisible at run time.

To dynamically create the **CDIntfEx** object, the **CDINTF300 DLL** should first be imported into the project. The procedure is quite similar in all programming environments.

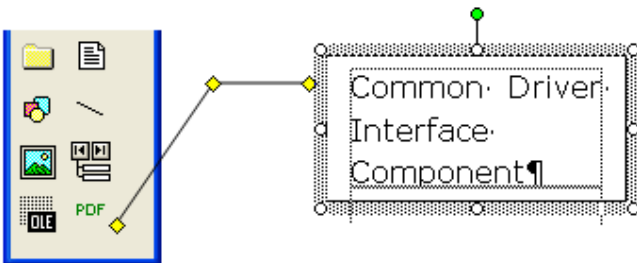
Here is what it would look like in VB:



To place the **CDIntfEx** control on a form, it should be imported into the project using the Project's Components menu:

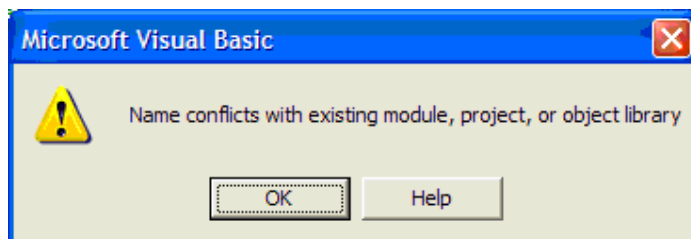


It should then appear in the components toolbar as follows:



Note to VB Users

VB users that had used previous versions of **CDIntf** or are trying to switch from dynamically created object to the visual component placed on a form, might receive the following error message from VB:



If this happens, the control should be manually removed from the project by following these steps:

1. Close the VB project
2. Open the .VBP file using any text editor
3. Locate and remove the line:

Reference=*G{4856F146-7516-11D3-BBE5-D53DCBD65107}#1.0#0#
c:\WINDOWS\System32\cdintf.dll#CDIntf.

4. *Reload the project in VB and import the control.*

Note on Function Calls

ActiveX Methods

On Success ActiveX methods will have a return relevant to their functionality. On failure, the return value will be zero.

If the library was not initialized properly, an exception will be thrown. To get extended error information, call **GetLastErrorMsg**

DLL Methods

On Failure, most DLL functions will return zero (NULL). To get extended error information, call **GetLastErrorMsg**.

On success, DLL methods that return a HANDLE will return a handle for the virtual printer that will be used as an argument for other method calls. The **hPrinter** handle returned by the functions is not to be confused with the **hPrinter** handle returned by the Windows API **OpenPrinter** and **CreatePrinter** functions.

Links to Support and Documentation:

If you have any questions or problems with our products, the following resources are available to you through our web site:

Online Documentation:

http://www.amyuni.com/WebHelp/Developer_Documentation.htm#index.htm

Frequently Asked Questions:

<http://www.amyuni.com/forum/viewforum.php?f=18>

Technical Notes:

<http://www.amyuni.com/en/support/technotes.html>

User forum:

<http://www.amyuni.com/forum/index.php>

Posting questions to our technical support staff:

<http://www.amyuni.com/en/support/techsupport.html>

We also provide some additional tools that can be downloaded free of charge and used with the PDF Converter product. These tools are available at:

<http://www.amyuni.com/en/support/downloads.html>