

Silent Install Builder

GETTING STARTED GUIDE

Contents

Introduction	4
Silent Install Builder Overview	4
System Requirements	4
Installation	4
User Interface	6
Main Window.....	6
Package Properties Page.....	6
Package Features	8
Feature Page	9
Files Editor.....	10
Registry Editor.....	12
Actions on Install/Uninstall Page	14
Install Application Dialog	15
Uninstall Application Dialog.....	16
Run EXE file Action Dialog.....	17
Run CMD file Action Dialog.....	18
Run Script file Action Dialog.....	19
Close Application Action Dialog	20
Build Dialog	21
Installed Apps Dialog.....	22
Repackager.....	23
Portable Repackager Dialog.....	23
Repackager Options Dialog.....	24
Manuals.....	25
Create silent installation	25
Silent Installation with command line options	25
Repackaging an Installation	26
Repackaging installation on another computer.....	28
Record UI Automation Script	29

Build the Package.....	33
Windows Installer Conditions	34

Introduction

This is a Getting Started guide describing how to create silent (automatic) application installation packages with the Silent Install Builder.

Silent Install Builder Overview

The Silent Install Builder allows you to automate application installation process. Create a setup package that contains one or more application installers that will be installed automatically in the background mode (silently). You can build either .exe (NSIS) or MSI (Windows Installer) package for an enterprise deployment using GPO, SCCM or other third-party tools.

System Requirements

Hardware:

CPU: modern x64 or x86 processor

Memory: min 1 GB RAM

Hard Disk Space: 25 MB for installation files and sufficient disk space for the repackaged installations

Operating systems:

- Windows 10
- Windows 8.1
- Windows 7
- Windows Server 2008/2012/2012 R2/2016

Runtimes:

- Microsoft .NET Framework 4.5.2 (<https://www.microsoft.com/en-us/download/details.aspx?id=42642>) or above

Privileges:

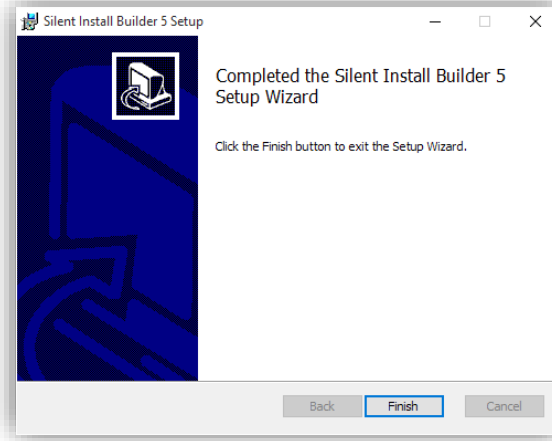
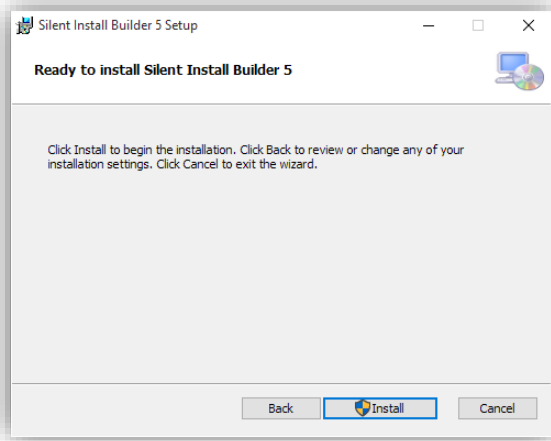
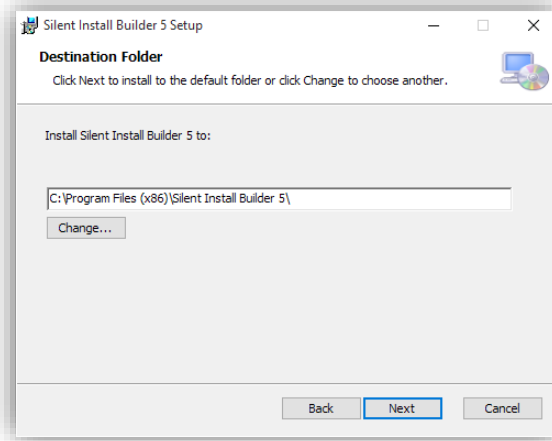
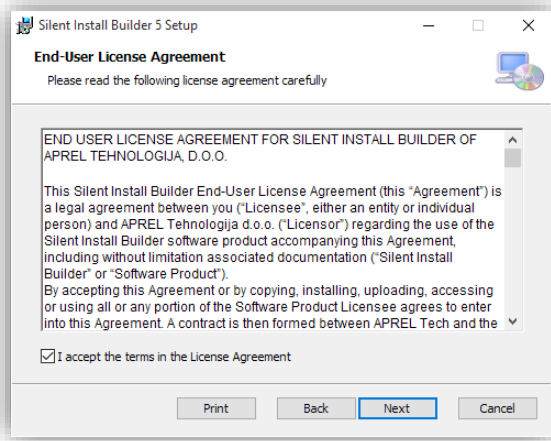
Administrative privileges on the system is required for [Repackaging](#) and [UI Script Recorder](#).

Installation

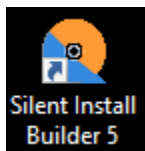
The evaluation version of Silent Install Builder can be downloaded here:

<https://www.apreltech.com/SilentInstallBuilder>

Run the downloaded installation file (.msi) and complete all steps. An older installed version will be updated during the installation.

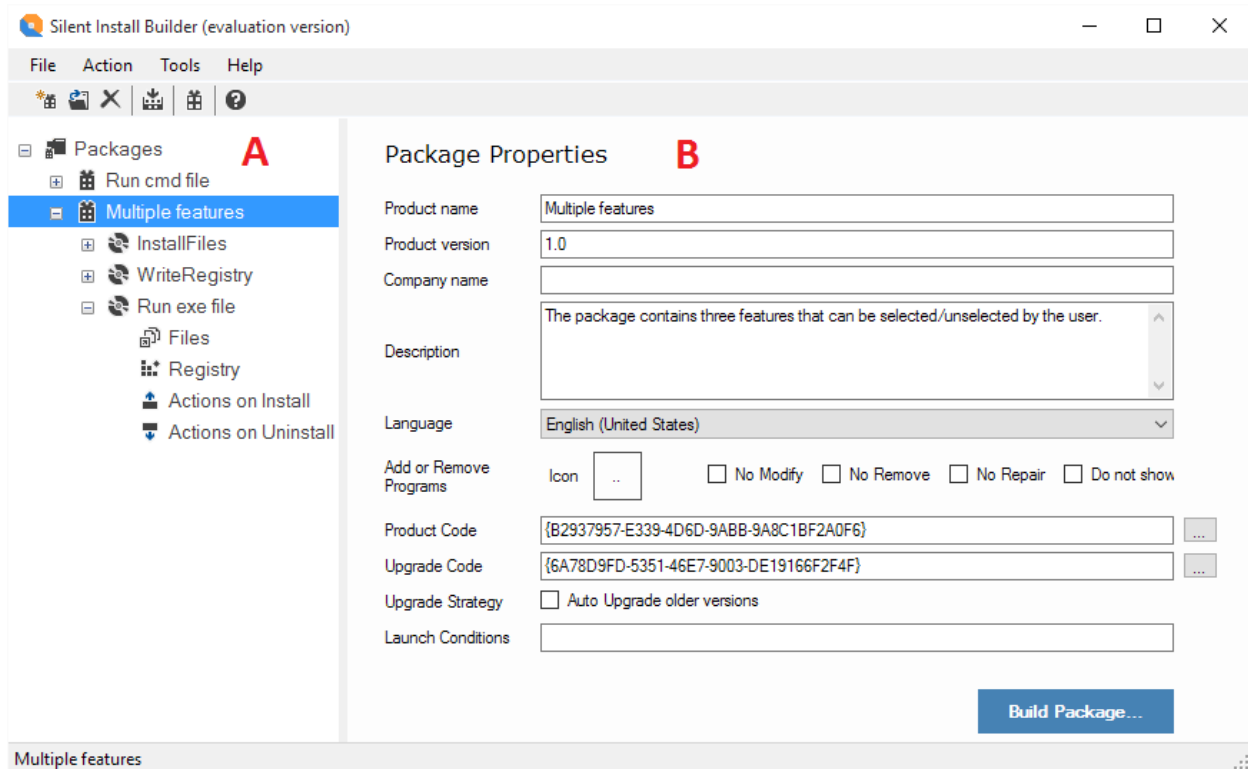


After installation is completed you can find the Silent Install Builder shortcut on the desktop and in the Start menu:



User Interface

Main Window



The Main window is divided on two parts: The **Navigation Pane (A)** on the left and the **Content Pane (B)** on the right.

When you select the **Navigation Pane** node for a particular item, its properties appear in the **Content Pane** area.

Package Properties Page

The Package Properties Page contains the following settings:

Product Name

Specifies a public name that describes an application when it is installed on a target computer. The property is displayed as the description of the application or component in the Add/Remove Programs dialog box.

Product Version

Specifies the version number of an installer.

Example: 1.0.0.0

MSI: Windows Installer uses only the first three fields of the product version. When the Version value is changed, you should also update the **Product Code** property.

Company Name

Specifies the name of the manufacturer of an application or component, usually the name of the company that developed it. The Manufacturer property is displayed in the Publisher field of the Support Info dialog box, accessible from the Add/Remove Programs dialog box.

Description

Provides description text for the Setup Wizard and for the Add or Remove Programs in Control Panel.

Language

Set the Language for the Setup Wizard dialogs.

MSI: The Language setting also defines the Windows installer code page. It is recommended to use only ASCII characters and then you can build a msi package with a neutral code page (en-US). Such a package could be used by any language. If you must include extended characters, you should set the language for the package before build.

Add or Remove Programs options

- **Icon:** Identifies the icon displayed in Add/Remove Programs.
- **No Modify:** Prevents display of a Change button
- **No Remove:** Prevents display of a Remove button
- **No Repair:** Disables the Repair button
- **Do not show in list:** Prevents display of the application in the Programs List

Product Code*

MSI: A unique identifier for the particular product release, represented as a string GUID, for example "{12345678-1234-1234-1234-123456789012}". This identifier must vary for different product versions.

Upgrade Code*

MSI: A GUID representing a related set of products. A set of different versions of the Product will have the same Upgrade Code. This enables newer versions of your application to search and upgrade previous versions installed on the same computer.

Auto Upgrade older versions*

MSI: Ensures that all older versions of the product are automatically uninstalled and if a newer version is detected, the "Newer version already installed" message is displayed.

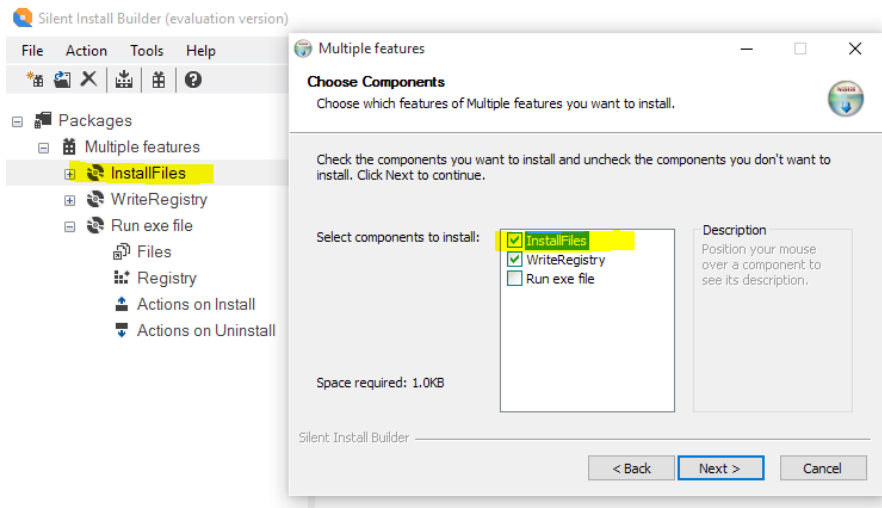
Launch Conditions*

MSI: Specifies the [Windows Installer conditions](#) required for installation on a target computer.

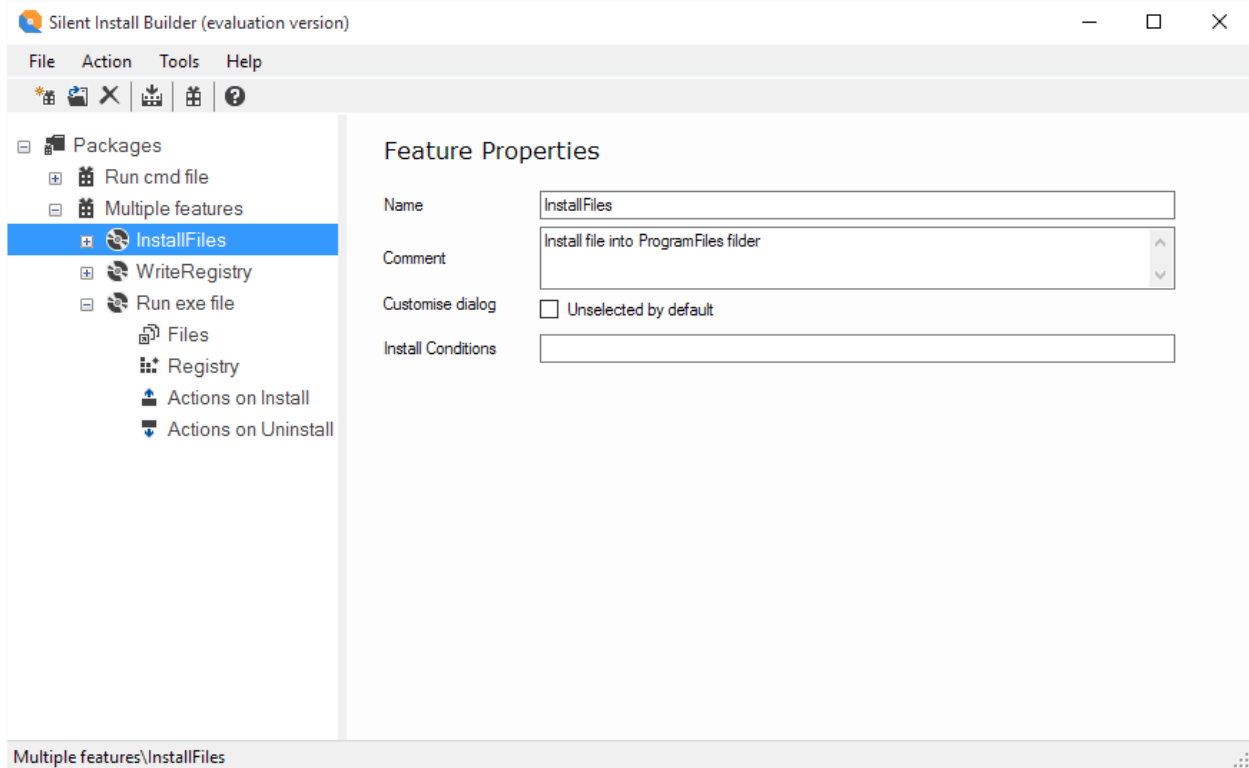
* The property is valid for MSI build and ignored for EXE build.

Package Features

The Package may contain one or more Features (Components). Each of these features can be installed separately by user choice. The picture below shows the package containing three features and the Choose Components page of the Setup Wizard.



Feature Page



Name

Specifies a name that will be displayed in the Select feature dialog.

Comment

Short description the feature. This string is listed as an item by the Selection Tree control of the Select Feature Dialog.

Unselected by default

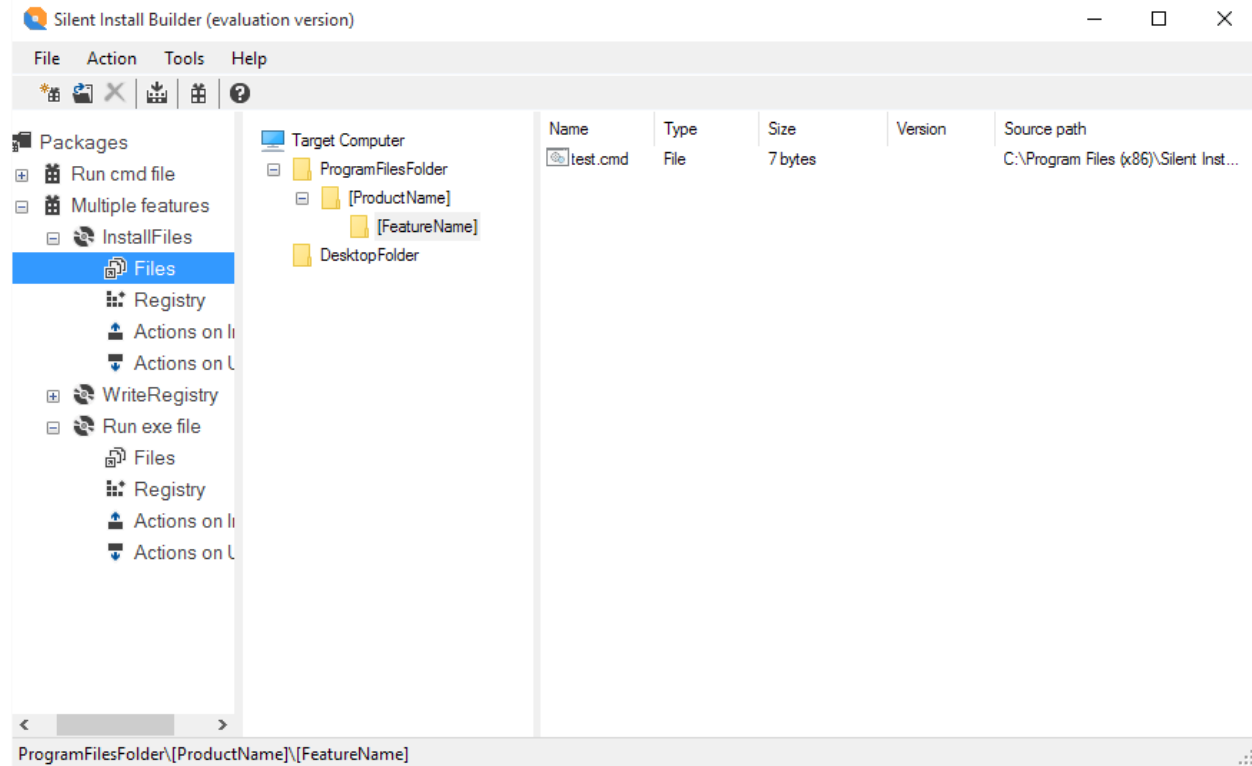
Determines whether or not the feature is initially displayed as selected or unselected.

Install Conditions*

MSI: Specifies the [Windows Installer conditions](#) required for installation on a target computer.

Files Editor

The Files Editor displays a set of folders that represent the folder structure on a target computer. The Files Editor is divided into two parts: The **Folders Tree** on the left and the **Files list** on the right. The **Folders Tree** contains a tree of folders that represent the file system changes on a target computer. When a folder item is selected in the tree, any file entries are displayed in the detail list.



Manage Folders

Add a System folder

1. In the **Folders Tree** right click on the empty space.
2. On the Popup menu, select the System Folder that you want to add.

Create a subfolder

1. In the **Folders Tree** right click on the Folder item.
2. On the Popup menu, click **New Folder**. The new Folder will be added as the subfolder of the previously selected folder item. The new folder is highlighted in the **Folders Tree**.
3. Type a name for the new folder.

Rename a subfolder

1. Right click the folder and choose Rename from the popup menu.
2. Type a new name for the folder and press Enter

Remove a folder

1. Right click the folder and choose Delete from the popup menu.
2. The selected folder will be deleted with all subfolders and files.

Manage Files

Add files

3. Select the Folder to add files to.
4. Right click on the **Files list** and choose **Add Files** from the popup menu. Browse for file dialog will be appeared.
5. Select the Files that you want to add and click OK.

Add Folder and containing files and subfolders

1. Select the parent folder to add files to.
2. Right click on the **Files list** and choose **Add Folder** from the popup menu. Browse for Folder Dialog will be appeared.
3. Select the Folder that you want to add and click OK.

Remove a File

1. Right click the item and choose Delete from the popup menu.

Manage Shortcuts

Create a shortcut

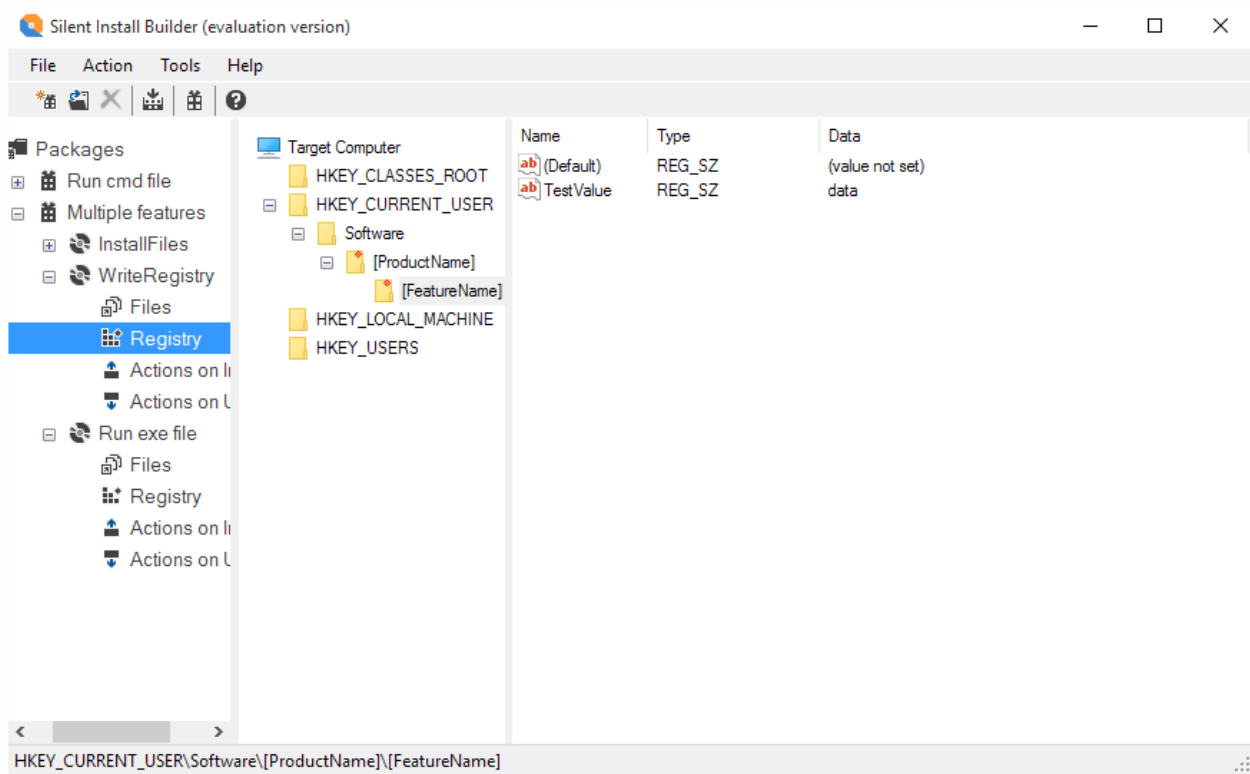
1. Select the parent folder to add Shortcut to.
2. Right click the **Files list** and choose **New Shortcut...** from the popup menu. **The Shortcut Dialog** will be appeared.
3. In the Shortcut dialog, select the target file for the shortcut and other properties. Click OK.

Remove a shortcut

1. Right click the shortcut and choose Delete from the popup menu.

Registry Editor

The Registry Editor specifies registry keys and values to be added to the registry of a target computer.



Manage Registry Keys and Values

Create a Registry Key

1. Right click on the item on the **Registry tree** and choose **New Key** from the popup menu.
2. The new Key will be added as the subkey of the previously selected registry key item. The new key is highlighted in the **navigation tree**.
3. Type a name for the new key.

Rename a Registry Key

1. Right click the folder and choose Rename from the popup menu.
2. Type a new name for the key and press Enter

Delete a Registry Key

1. Right click the key and choose **Delete** from the popup menu.
2. The selected key will be deleted with all subkeys and values.

Create a Registry Value

1. Right click on the key on **Registry tree** and point to **New** from the popup menu, select new value node.
2. The new Value will be added into previously selected registry key item. The new value is highlighted in the **details list**.

Edit a Registry Value

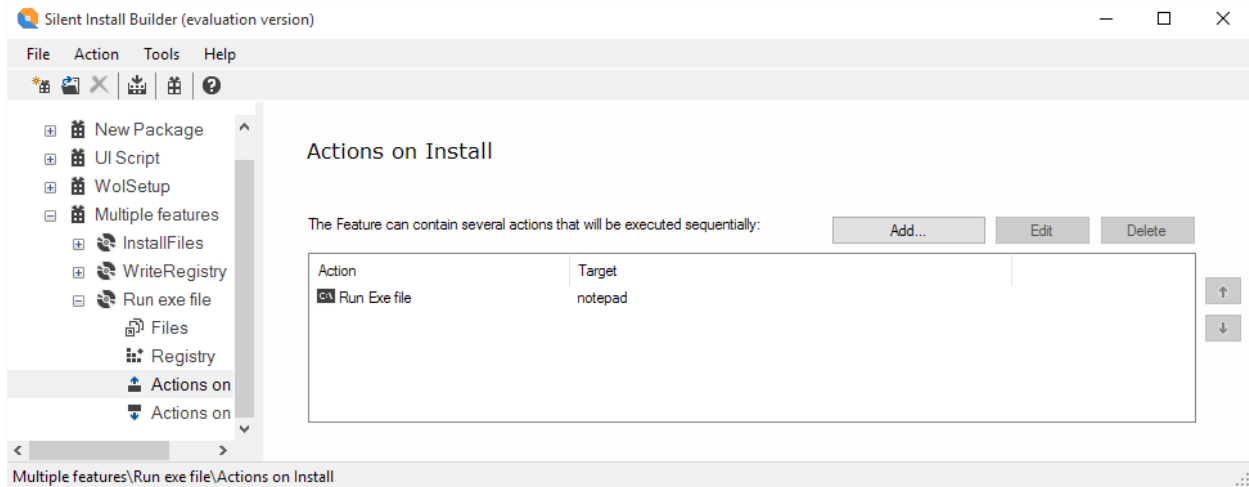
1. Right click the selected value in the **Detail list** and choose **Modify** from the popup menu. The Registry Value Dialog will be appeared.
2. In the **Registry Value dialog**, enter a name for the value and other properties. Click OK to save.

Rename a Registry Value

1. Right click the value and choose Rename from the popup menu.
2. Type a new name for the value and press Enter

Actions on Install/Uninstall Page

The Install/Uninstall actions Page defines the actions that will be executed during the package installation or uninstallation. The actions will be executed sequentially from top to down of the list.



Add the Action

- Click the Add... button in the drop-down menu select the Action to add.

Delete the Action

- Select the Action in the list then click the Delete button

Change the Action execution order

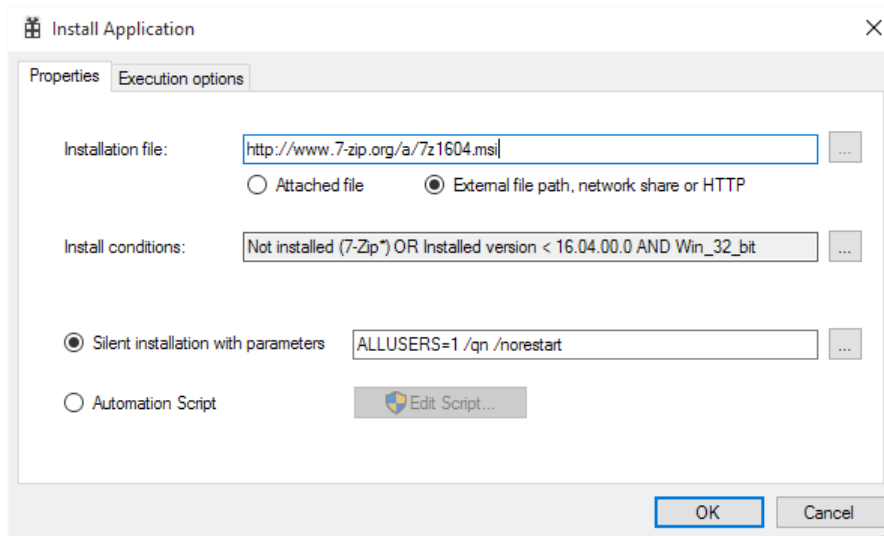
- Select the Action then click the Up Arrow/Down Arrow on the right side of the list.

The following Actions is available

- [Install Application](#)
- [Uninstall Application](#)
- [Run EXE file](#)
- [Run CMD file](#)
- [Run Script file](#)
- [Close Application](#)

Install Application Dialog

The Install Application action performs a silent installation of the specified installer package.



Installation File

Specifies the application Installation File path to be installed. It can be an .exe or .msi file.

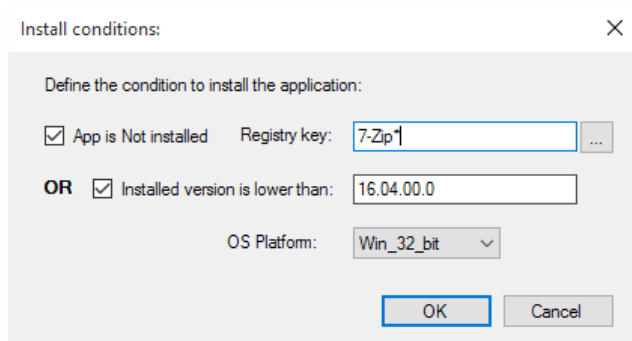
The Following locations are supported for Installation files:

- **Attached File**
 - The Installation File is a part of the package content. Default location for attached files is TempFolder\[FeatureName] folder. Content of this folder will be copied to %TEMP% directory on a target computer. You can add other files and folders required for installation in the [Files Editor](#)
- **External File**
 - The Full Path to a file on a Local Computer. Example: C:\setup.exe
- **Network Share**
 - The Installation File is located on a Network Share (UNC path). Example: \\share\setup.exe
- **Http(s) web path**
 - The Installation File is located on a web site. The File will be downloaded to a %TEMP% directory on a target computer. Example: <https://website.com/setup.exe>

Install Conditions

Installation conditions allow you to specify the conditions under which an Application Installer will be executed. For example, you might have two versions of an application, each designed to run on a

particular OS Platform. Rather than creating a separate installer for each version, you can set the condition for each Application Installer and include them both in a single installer.



- **Application is NOT installed**
 - Search for the specified **Registry key**. If the Key is found (App is installed) the action will be canceled.
- **Installed version is lower than**
 - If the installed version is higher or equal the specified version, the action will be canceled.
- **OS Platform**
 - If the target OS Platform is different than the specified the action will be canceled.
Available values: Win32bit, Win64bit, Any.

Silent Installation with parameters

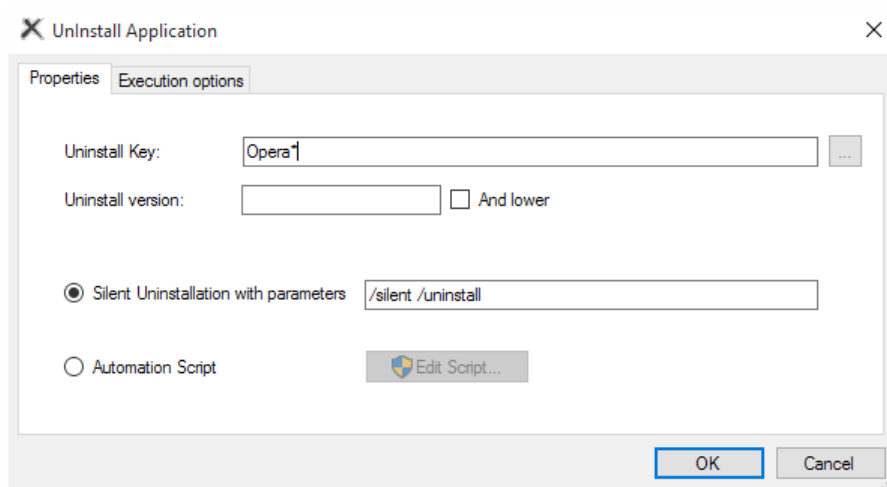
Specifies command line switches to initiate an unattended (silent) installation. Once the installer file is selected, the program automatically detects most common Install system types and their command line options. If the installer type is not detected, try to find the information you need in other sources: visit software vendors website or contact them directly.

Automation Script

Use UI Script recorder to automate uninstallation process. It allows to manipulate controls such as edit boxes, check boxes, list boxes, combos, trees, buttons. Use this method if the installer does not support the silent installation or if you need to customize install options. Refer to [Using UI Script Recorder](#) section to get info on how to record the script.

Uninstall Application Dialog

The Uninstall Application Action performs a silent uninstallation of the specified application.



Uninstall Key

The Uninstall Registry Key name under `HKEY_LOCAL_MACHINE\SOFTWARE\Microsoft\Windows\CurrentVersion\Uninstall`. The key is used to search for an installed application data. Can be specified a full name or wildcard expression. You can select the key name from the installed apps list. Click Browse button the [Installed Apps Dialog](#) will be opened, then select the application to uninstall.

Uninstall Version

Uninstalls only specified version of the application. If the **And Lower** is checked, uninstalls the app if lower or equal version found.

Silent Uninstallation with parameters

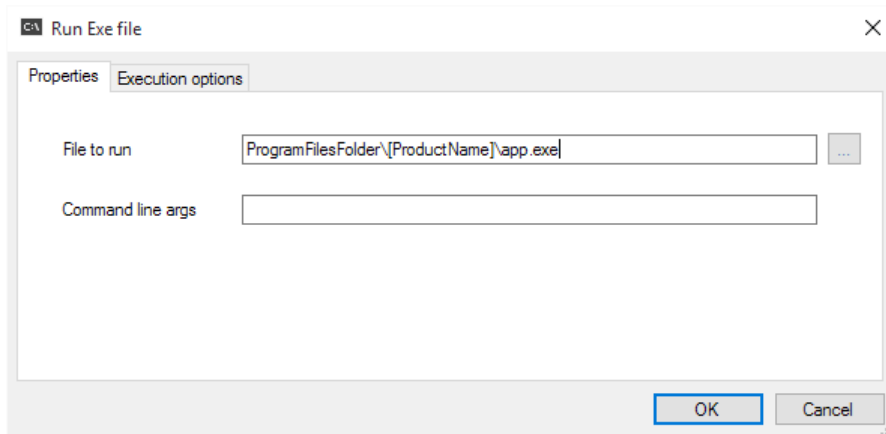
Specifies command line switches to initiate an unattended (silent) uninstallation.

Automation Script

Use UI Script recorder to automate uninstallation process. It allows to manipulate controls such as edit boxes, check boxes, list boxes, combos, trees, buttons. Use this method if the uninstaller does not support the silent installation or if you need to customize uninstall options. Refer to [Using UI Script Recorder](#) section to get info on how to record the script.

Run EXE file Action Dialog

The action runs specified executable file.



File to run

The Following locations are supported for the target file:

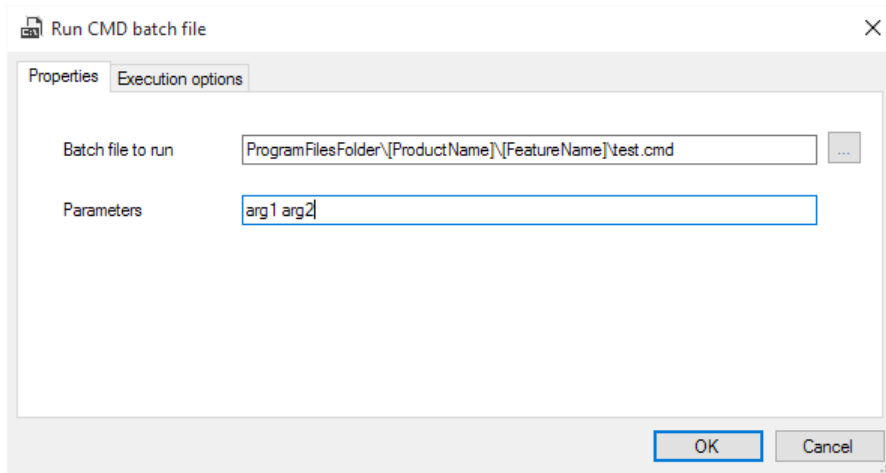
- **Attached File**
 - The File is a part of the package content. Default location for attached files is TempFolder\[FeatureName] folder. Content of this folder will be copied to %TEMP% directory on a target computer. You can add other files and folders required for installation in the [Files Editor](#)
- **External File**
 - The Full Path to a file on a Local Computer. Example: C:\setup.exe
 - The file name only, if file location is well-known. Example: notepad.exe

Command line arguments

Command line arguments for exe file.

Run CMD file Action Dialog

The action runs specified Windows command file (.cmd, .bat).



CMD File to run

The Following locations are supported for the target file:

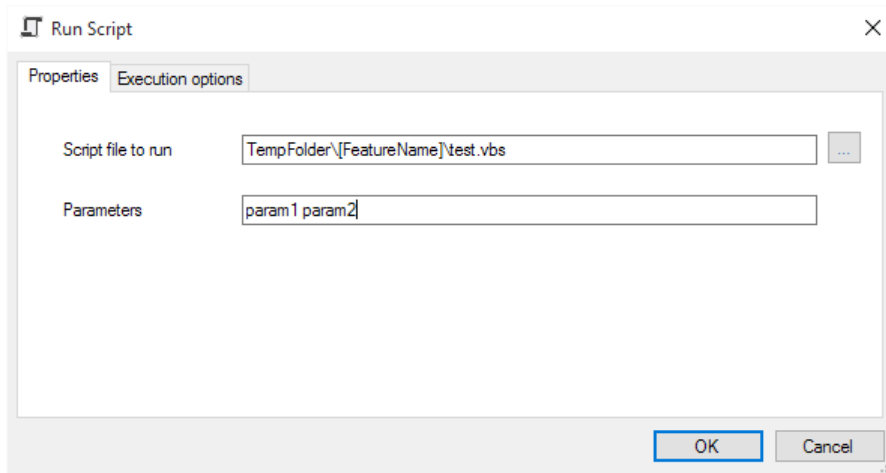
- **Attached File**
 - The File is a part of the package content. Default location for attached files is TempFolder\[FeatureName] folder. Content of this folder will be copied to %TEMP% directory on a target computer. You can add other files and folders required for installation in the [Files Editor](#)
- **External File**
 - The Full Path to a file on a Local Computer. Example: C:\xx.cmd
 - The file name only, if file location is well-known. Example: xx.cmd

Parameters

Command line parameters for CMD file.

Run Script file Action Dialog

The action runs specified VB Script file (.vbs).



Script File to run

The Following locations are supported for the target file:

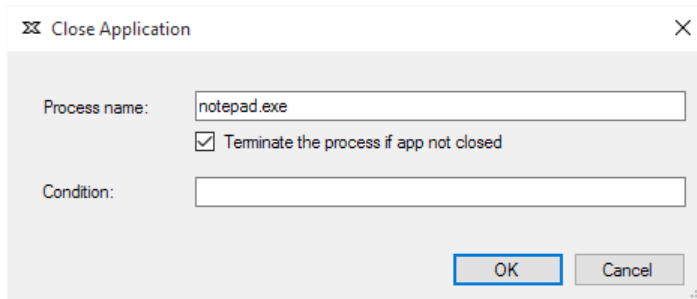
- **Attached File**
 - The File is a part of the package content. Default location for attached files is TempFolder\[FeatureName] folder. Content of this folder will be copied to %TEMP% directory on a target computer. You can add other files and folders required for installation in the [Files Editor](#)
- **External File**
 - The Full Path to a file on a Local Computer. Example: C:\xx.vbs
 - The file name only, if file location is well-known. Example: xx.vbs

Parameters

Command line parameters for script file.

Close Application Action Dialog

The action tries to close the Window of specified process, and optionally terminates the process.



Process name

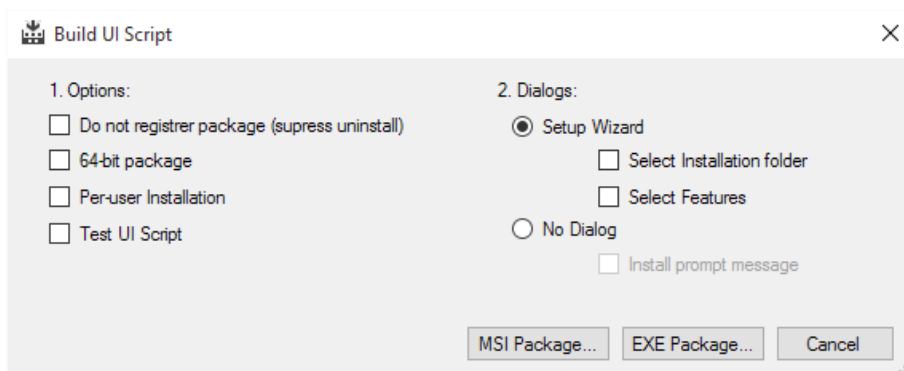
The name of the target process. Example: notepad.exe

Condition*

MSI: Specifies the [Windows Installer conditions](#) required for run the action on a target computer.

Build Dialog

The Build Dialog provides options for package build.



Build Options

- **Do not register package**
Do not register the package in the Add/Remove Programs control panel applet. This option suppresses the package uninstallation.
- **64-bit package**
Build a package as 64-bit. The files will be installed to the 64-bit ProgramFiles folder.
- **Per-user installation**
Disables UAC elevation on installation. Installation possible only to user profile and registry.

- **Test UI Script**

Makes UI Script actions visible for testing.

Dialog Options

- **Setup Wizard**

The package displays a Full user interface (Setup Wizard) with following options:

- **Select installation folder**

Displays the page that enables user to specify the installation folder

- **Select features**

Displays the page that enables user to select [package features](#)

- **No Dialog**

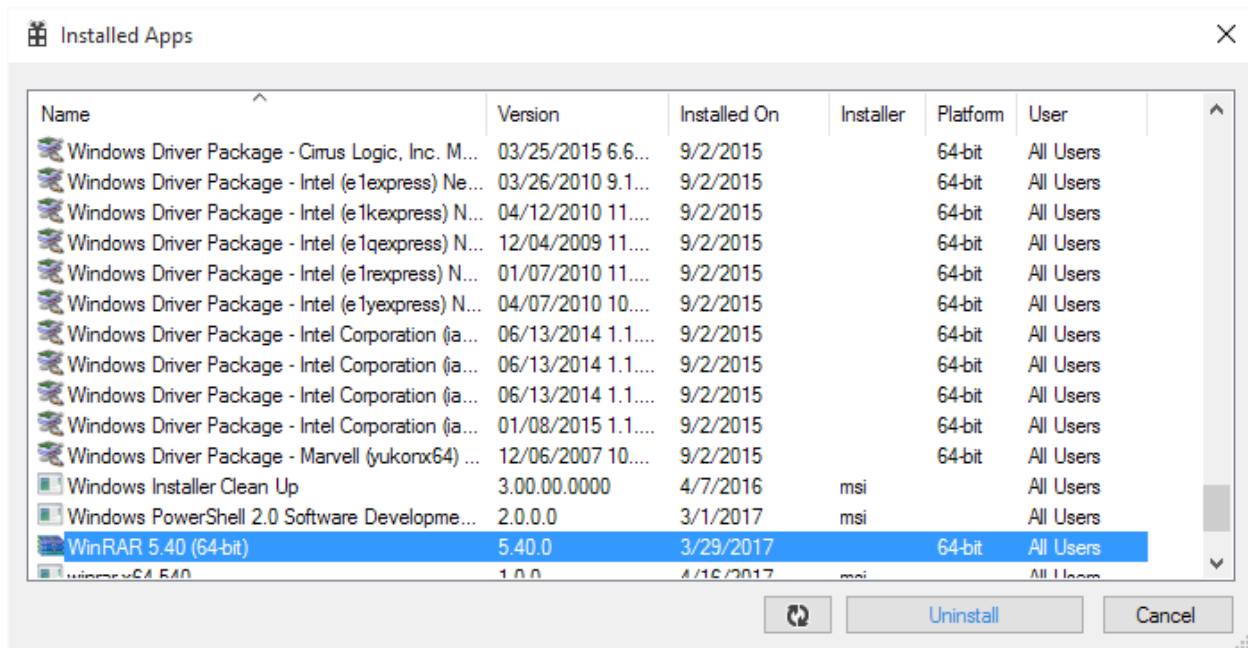
No dialogs displayed.

- **Install prompt message**

User prompted to continue before install.

Installed Apps Dialog

The dialog shows applications installed on a local computer.



Open Installed Apps dialog

In the [Main Window](#) click menu Tools, select Installed Apps.

Uninstall the application

Select the application from list. Click the Uninstall button. Click Refresh button to update the list.

Repackager

Repackager is a tool designed to repack an existing installation packages by capturing the System changes. You can use the Repackager in two ways:

1. With the New Package wizard in Silent Install Builder

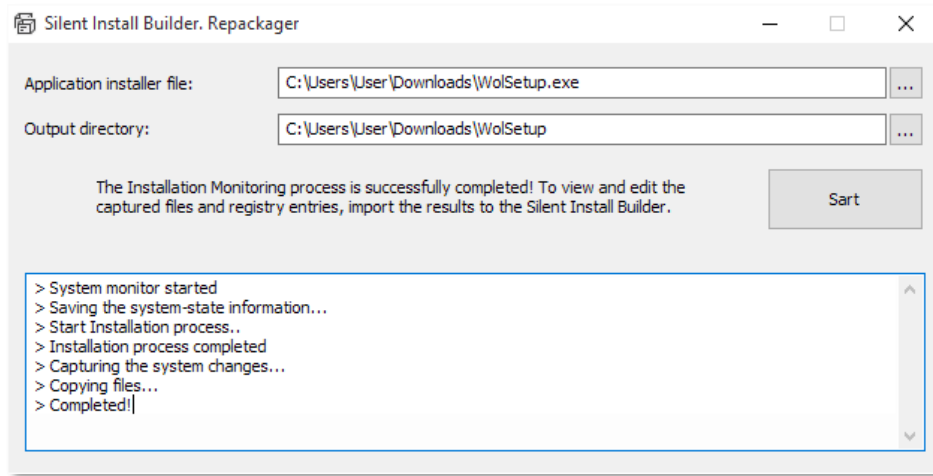
[Repackaging an Installation](#)

2. As a Portable tool

[Repackaging installation on another computer](#)

Portable Repackager Dialog

The portable Repackager tool is located in %ProgramFiles%\Silent Install Builder 5 directory. To start the portable Repackager right click on Repackager.exe file and select Run as Administrator.



Application installer file

Specifies the installation file to repackage

Output directory

The directory where captured files will be stored

Repackager Options Dialog

To open the Dialog: In the [Main Window](#) click menu Tools, select Repackager Options. The following options can be specified:

- **Snapshot Directory**

Specifies the directory where snapshot files will be stored. Default location:
%LocalAppData%\SIB\Repackager

- **File System filters**

Defines the Monitoring File System Filters. Filters are used by [Repackager](#) to exclude specific files and folders from monitoring.

- **Registry filters**

Defines the Monitoring Registry Filters. Filters are used by [Repackager](#) to exclude specific registry keys from monitoring.

Monitoring Filters

The File System or Registry filter can be added in two ways:

1. In the Repackager Options Dialog.
 - a. On filters tab click the Add button. Edit Filter dialog will be opened.
 - b. Enter the filter value and click OK.
2. From the [Files Editor](#) and [Registry Editor](#).
 - a. In the **Navigation tree**, right click on the Folder item.
 - b. On the Popup menu, click Repackager->Add to scan Filter. Edit Filter dialog will be opened.
 - c. Click OK to add the Filter value to filters list.

You can use full path, wildcard or regex pattern for the Scan Filter value.

Manuals

Create silent installation

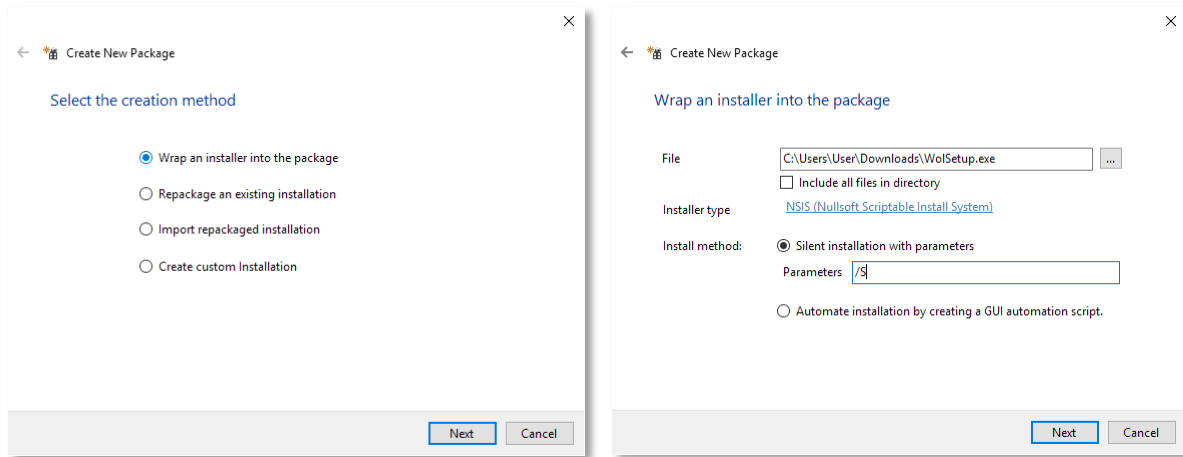
The Silent Install Builder provides the following options to create silent installation:

- [Repackaging an existing Installation](#)
- Wrap an Installer file into the package
 - [Silent Installation with command line options](#)
 - [Silent Installation with UI Automation Script](#)

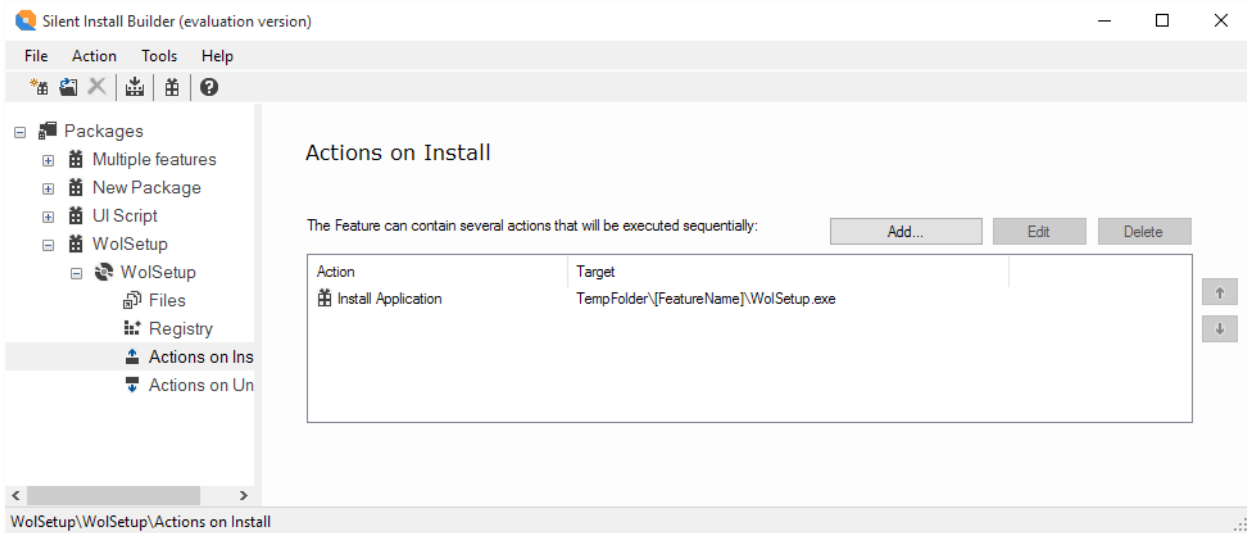
Silent Installation with command line options

This is a tutorial on how to create a silent installation package with command-line parameters. This is a recommended method if a silent installations options are known.

1. Run the New Package Wizard
2. Select Wrap an installer into the package and click Next
3. Select the installation file you wish to wrap. For well-known install systems command-line parameters for silent installation will be detected automatically. If installer type is not recognized, refer to the Software vendor documentation and specify command-line parameters manually.
4. Click Next to continue, then click Finish to close the New Package wizard.



5. A new package will be created.

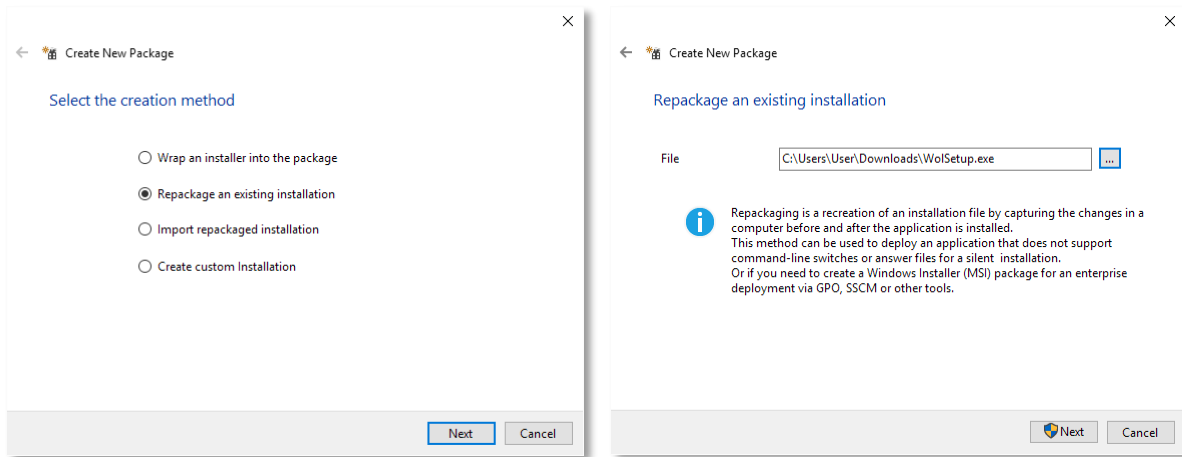


- [Manage Files](#)
- [Install Application Dialog](#)
- [Build the Package](#)

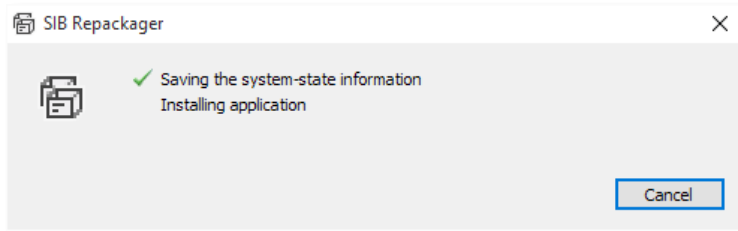
Repackaging an Installation

This is a tutorial on how to create a package based on capturing an existing installation. This method commonly used to repackage an older legacy installation to the Windows Installer package (MSI).

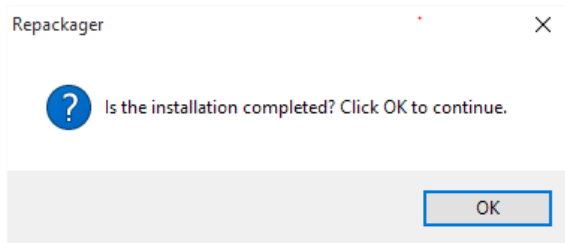
1. Run the New Package Wizard
2. Select Repackage an existing installation and click Next
3. Select the installation file you wish to repackage and click Next.



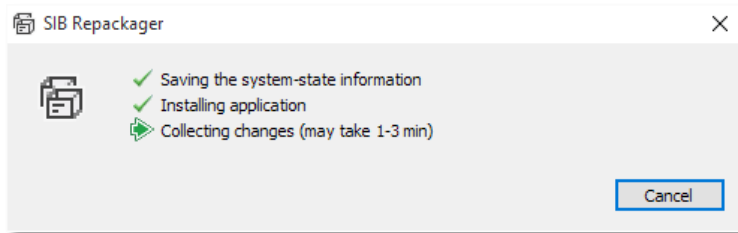
4. The Repackager dialog will appeared and capturing process will be started
5. Wait for the System-state information will be saved. It may take 1-3 min depends on the OS type and hardware performance.



6. Once the System-state information will be saved, the installation process started. Complete an Installation and close the installer dialog.
7. The 'Is Installation completed?' message will be appeared. Click OK to continue.

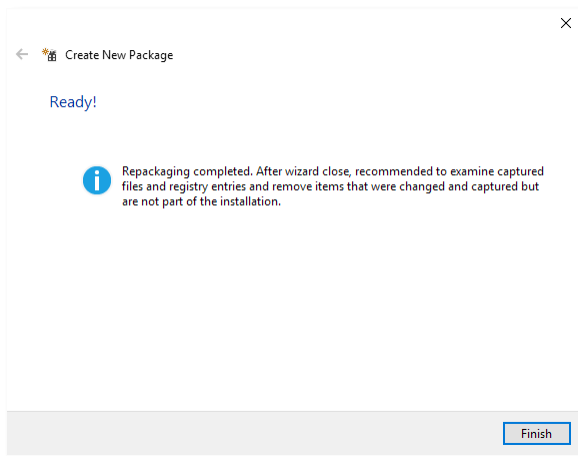


8. The Next step is Collecting Changes.
9. Wait for the Collecting Changes operation completed. It may take 1-3 min depends on the OS type and hardware performance.



10. The Finish page of New Package Wizard will be appeared.

11. Click Finish to close the New Package Wizard.



12. The new package will be created and the Captured Installation will be imported to.

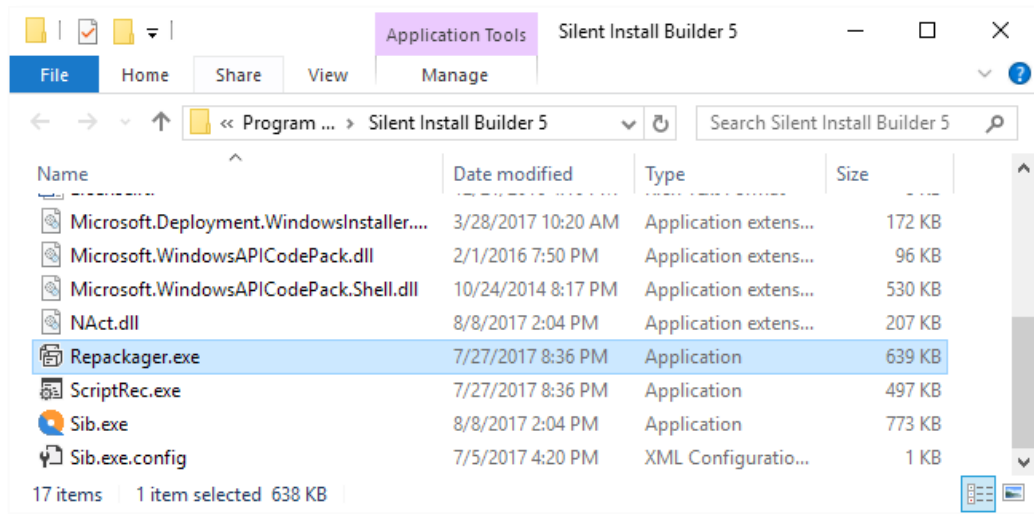
13. Examine captured files and registry entries. Remove items that were changed and captured but are not part of installation.

- [Manage Files](#)
- [Manage Registry Keys and Values](#)
- [Build the Package](#)

Repackaging installation on another computer

The best practice of repackaging is capturing changes on a 'clean' operating system in a Virtual machine. You can do that with the Portable Repackager without installing Silent Install Builder.

1. Copy `%ProgramFiles%\Silent Install Builder 5\Repackager.exe` file to portable drive or a network share

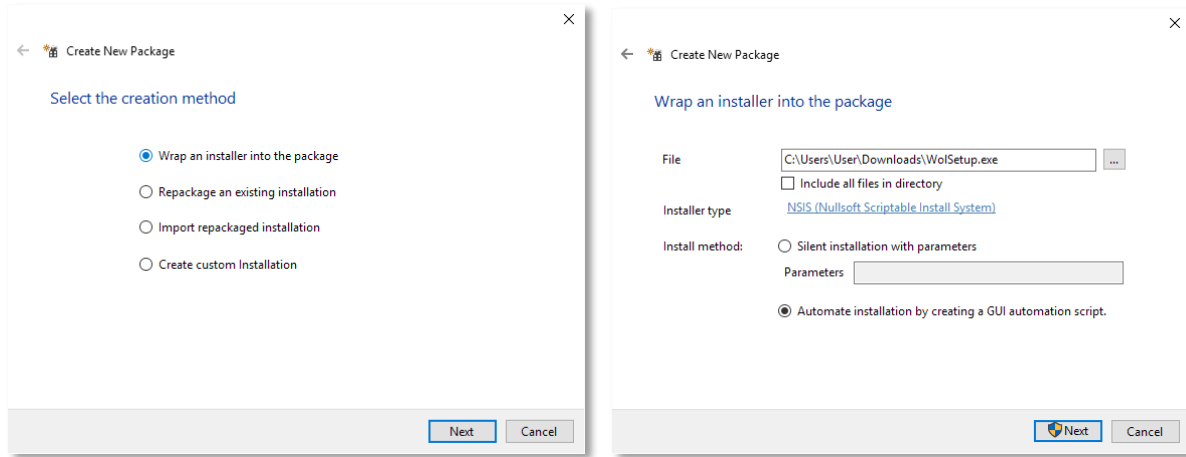


2. Run Repackager.exe as Administrator on a target computer.
3. In the [Portable Repackager Dialog](#) select the installation file you wish to repackage and output directory.
4. Click Start
5. Wait for the System-state information will be saved. It may take 1-3 min depends on the OS type and hardware performance.
6. The installation file will be started.
7. Complete all installation steps and close the Installer dialog.
8. Wait for the Collecting Changes operation completed. It may take 1-3 min depends on the OS type and hardware performance.
9. Open the output directory and copy the captured files to the location accessible from the computer running the Silent Install Builder.
10. To Import the captured files to the Silent Install Builder, run the New Package Wizard, select **Import repackaged installation** and click **Next**.
11. Select the **Snapshot directory** where the captured files located. Then click **Next** and **Finish**.
12. The new package will be created and the Captured Installation will be imported to.
13. Examine captured files and registry entries. Remove items that were changed and captured but are not part of installation.
 - [Manage Files](#)
 - [Manage Registry Keys and Values](#)
 - [Build the Package](#)

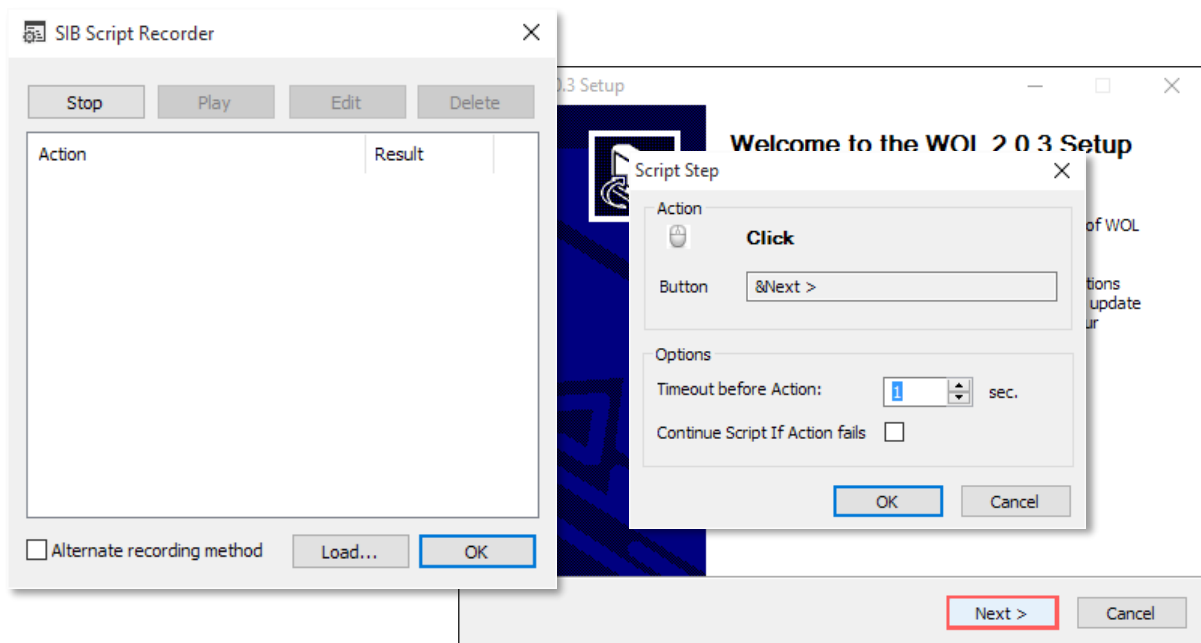
Record UI Automation Script

This is a tutorial on how to use UI Script Recorder to automate installation. This method recommended to use to install packages that does not support silent installation via command line. Or if you want to customize the Setup options via UI.

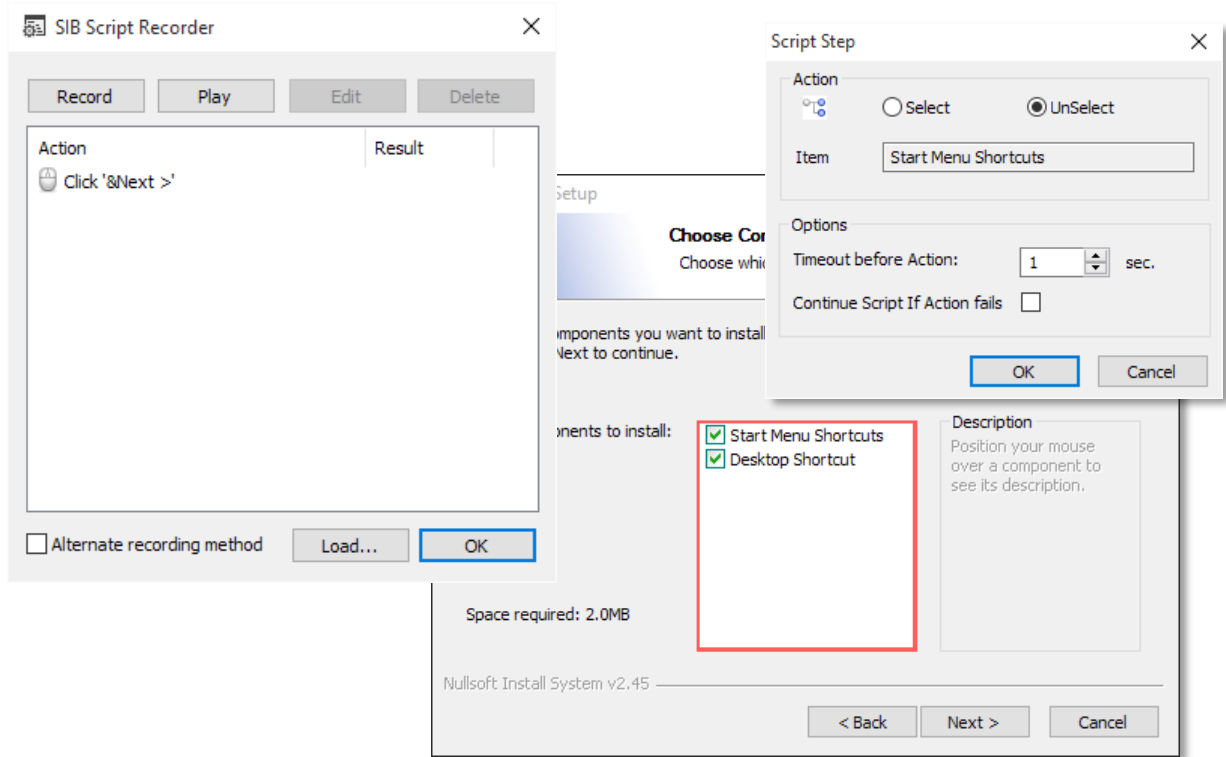
1. Run the New Package Wizard
2. Select Wrap an installer into the package and click Next



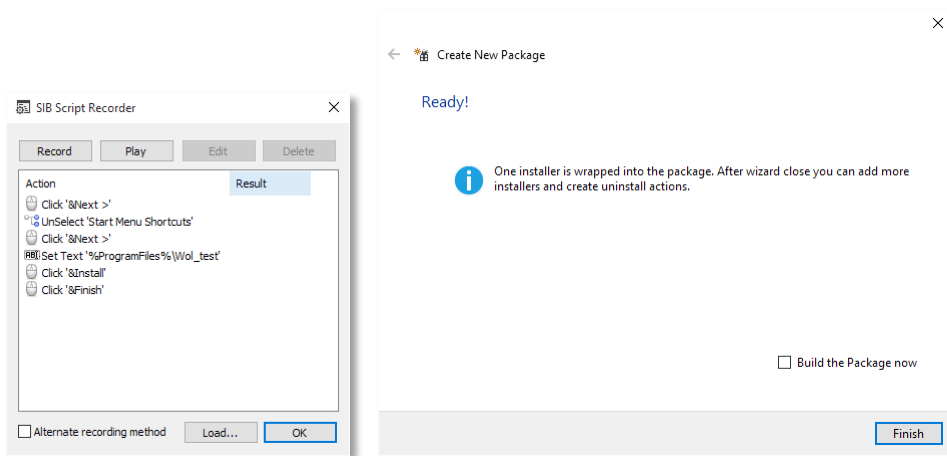
3. Select the installation file you wish to wrap and click Next.
4. The installation file will be started and UI Script Recorder window will be appeared.
5. Use the Mouse to choose the Control for action, then use Ctrl + Mouse Click to select the control.
6. When control is selected, the Script Step dialog will be appeared. The picture below shows the Next button selected.



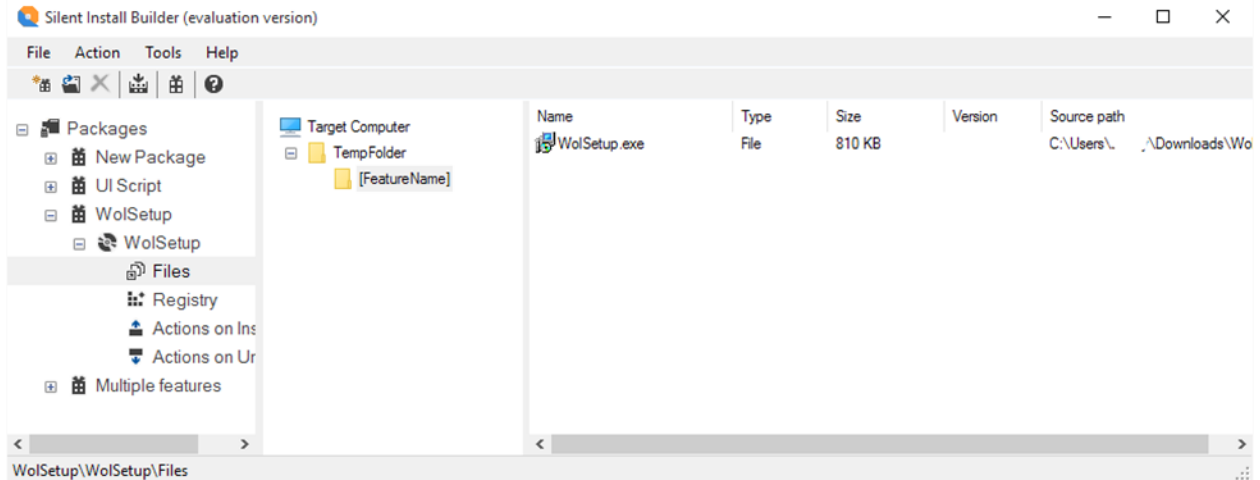
7. Click OK to save Script Step. The New Step will be added to the Script Recorder window.
8. Click the Next button in the Installer dialog to continue.
9. Pass through all installation steps.



10. To test the recorded script click Play button.
11. Click OK to save the Script and close the Script recorder window.
12. Click Finish to close the New Package Wizard



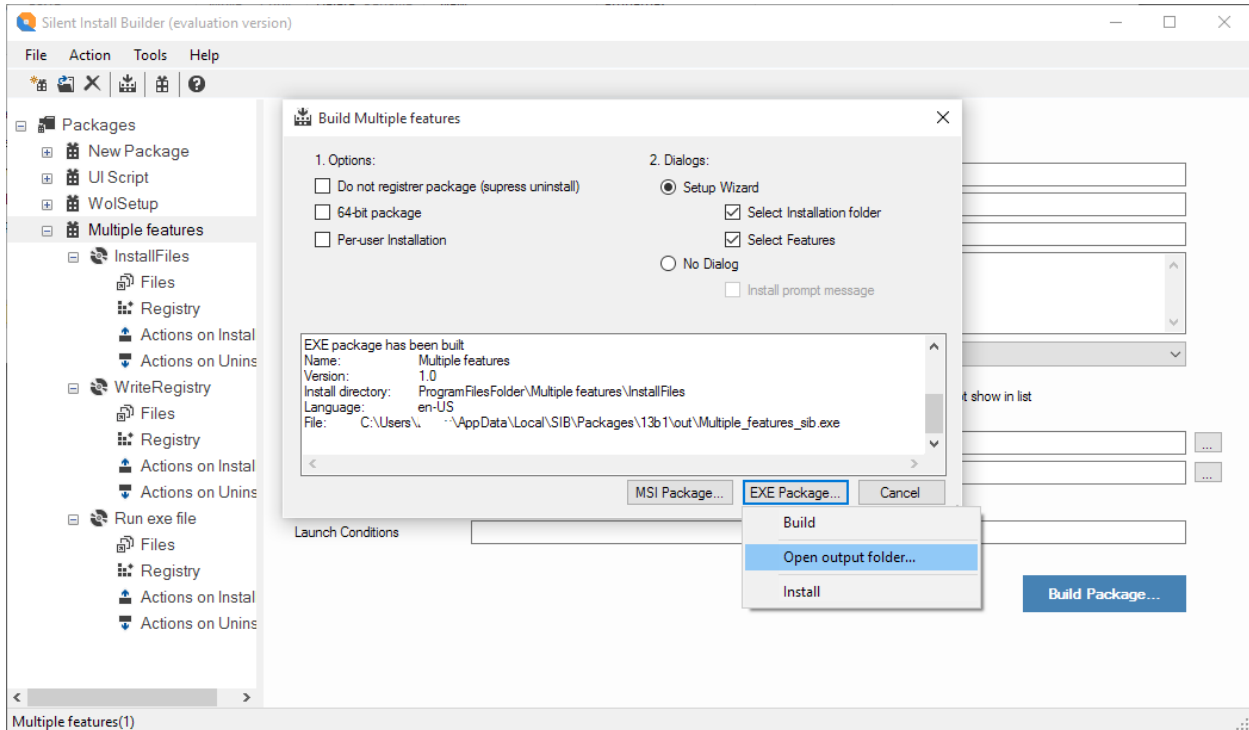
13. A New package will be created. The package contains [Install Application Action](#). An installation file is included to *TempFolder\[FeatureName]* folder. You can add other files in this folder if required.



- [Manage Files](#)
- [Build the Package](#)

Build the Package

1. Select the Package in the [Navigation Pane](#) and click Build Package in the Action menu
2. The [Build Dialog](#) will be appeared. You can build the Package as MSI or EXE file
3. Click the **MSI/EXE Package...** button and then select **Build** in the drop-down menu.
4. The Build process will be started and the Build log window will be displayed
5. To view the package file, click the **MSI/EXE Package...** button and then select **Open Output folder...** in the drop-down menu.



Windows Installer Conditions

The table below contains common Windows Installer Conditions and examples of use.

64-bit OS	VersionNT64
32-bit OS	NOT VersionNT64
Silent Install (UI Sequence not run)	UILevel <= 3
The directory that contains the installation package.	SourceDir="somepath"
Windows 10	VersionNT = 1000 AND MsiNTProductType = 1
Windows Server 2016	VersionNT = 1000 AND MsiNTProductType = 3
Windows 8.1	VersionNT = 603 AND MsiNTProductType = 1
Windows Server 2012 R2	VersionNT = 603 AND MsiNTProductType = 3
Windows 8 and Server 2012	VersionNT = 602
Windows Server 2008 R2	VersionNT = 601 AND MsiNTProductType = 3
Windows 7	VersionNT = 601 AND MsiNTProductType = 1
Windows Server 2003	VersionNT = 502 AND MsiNTProductType = 3
Windows XP	VersionNT = 501
Windows XP (64-bit)	VersionNT = 502 AND MsiNTProductType = 1
The size of the installed RAM, in megabytes	PhysicalMemory >= 1024
Default language identifier for the system	SystemLanguageID = 1033
Environment variable value	%TEMP

The full Property Reference is available in Microsoft documentation [https://msdn.microsoft.com/en-us/library/windows/desktop/aa370905\(v=vs.85\).aspx](https://msdn.microsoft.com/en-us/library/windows/desktop/aa370905(v=vs.85).aspx)

Conditional Statement Syntax

Substring Operators

- >< contains
- << starts with
- >> ends with

Logical Operators

- **NOT** inverts state of following item
- **AND** TRUE if both terms are TRUE
- **OR** TRUE if either or both terms are TRUE
- **XOR** TRUE if either but not both are TRUE
- **EQV** TRUE if both are TRUE or both are FALSE
- **IMP** TRUE if left term is FALSE or right is TRUE

Comparison Operators

- = equals
- <> not equals
- > greater than
- >= greater than or equals < less than
- <= less than or equals
- ~= case-insensitive equals