

ArtfulBits Image Upload Column

for Microsoft® SharePoint®

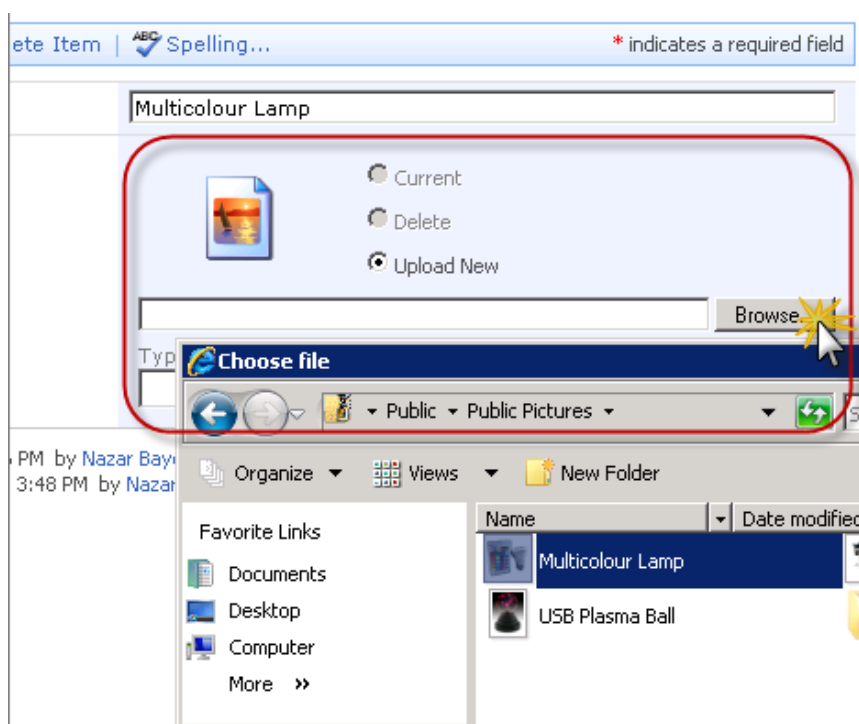


User Guide

Overview	1
Feature List	3
Why ArtfulBits Image Upload Column?.....	3
How to Use	3
Release Notes	4
See Also	7
Remarks.....	8

Overview

Image Upload component is intended to upload and display pictures for list item. It provides ability to directly select a picture in file browsing dialog, upload and display it in the list view.



Component provides quick mechanism of manipulating picture upload, edit and delete actions.



It is possible to setup filtering using predefined or custom extensions.

Use file extensions filter

Acceptable file extensions:

*.gif *.png *.bmp

*.jpg *.jpeg *.jpe

Type a comma-delimited additional list of file extensions:

example: ico, pict

Image size in List Views:

Use default image size

Specify image size

Width (pixels)	Height (pixels)
<input type="text" value="100"/>	<input type="text" value="100"/>

Limit image size

Max. width (pixels)	Max. height (pixels)
<input type="text"/>	<input type="text"/>

Image size in list item Edit/Display forms:

Use default image size

Specify image size

Width (pixels)	Height (pixels)
<input type="text"/>	<input type="text"/>

Limit image size

Max. width (pixels)	Max. height (pixels)
<input type="text" value="200"/>	<input type="text" value="150"/>

Use image size the same as in List Views

Resize large images after upload (on server side)

Yes No

Max. width (pixels)	Max. height (pixels)
<input type="text" value="512"/>	<input type="text" value="512"/>

Show as link

You can also customize image appearance in list view and list item Edit/Display forms according to your needs (specifying image size, limiting image size, displaying image as a link).

Feature List

Feature	SharePoint 2007	SharePoint 2010
Direct image uploading	✓	✓
Support any type of SharePoint list (not only Picture Library)	✓	✓
File extensions filtering (predefined and custom extensions supported)	✓	✓
Ability to upload files of any type	✓	✓
Image thumbnails for list views	✓	✓
Image description support (used as alternative text for the picture)	✓	✓
Customizing image appearance on list view and list item Edit/Display forms (specifying image size, limiting image size, displaying image as a link)	✓	✓
Resize large images after upload	✓	✓
Images stored in separate internal list subfolder (no conflict with attachments)	✓	✓
Language pack support (desired localization could be added by request)	✓	✓

Why ArtfulBits Image Upload Column?

Default process of associating an image with a list item in SharePoint is not so obvious and comfortable. Default WSS 3.0 "Hyperlink or Picture" column does not allow uploading images via browsing and requires you to set the URL of the image already existing on the site. In order to associate images with some item in a list in MOOS 2007 user should create the separate picture list and then set the URL of certain image to picture column via the modal dialog.

ArtfulBits Image Upload Column provides you with easier and flexible way to do this. Image Upload column allows the user to browse their local computer for image of interest. Once the image is selected, column will automatically upload the image and link it to the item.

How to Use

To use Image Upload column you must select appropriate option in the list of available columns at the Create Column page. In the Image Upload Special Settings section you can use the file extensions filter in order to use only predefined image types. Image Upload column allows you to upload not only images, but other files of any type (for ex. documents, archives and others).

Release Notes

Version	Notes
v1.71 (June 09, 2011)	Bugs Fixed: <ul style="list-style-type: none">Fixed column settings update
v1.7 (June 01, 2011)	Improvements: <ul style="list-style-type: none">Added support for new licensing model (ArtfulBits License Manager v1.4)Added "Save site as template" support
v1.64 (May 11, 2011)	New Features: <ul style="list-style-type: none">Added Dutch localization Improvements: <ul style="list-style-type: none">Added "Save site as template" support Bugs Fixed: <ul style="list-style-type: none">Fixed image tooltipFixed minor issues
v1.63 (March 30, 2011)	Bugs Fixed: <ul style="list-style-type: none">Fixed image uploading for Document Library
v1.62 (December 10, 2010)	Bugs Fixed: <ul style="list-style-type: none">Fixed image rendering for Announcements list
v1.61 (November 26, 2010)	Bugs Fixed: <ul style="list-style-type: none">Fixed PNG, BMP image resizingFixed minor issues
v1.6 (November 16, 2010)	New Features: <ul style="list-style-type: none">Added Russian and German localization Bugs Fixed: <ul style="list-style-type: none">Fixed minor issues
v1.5 (September 2, 2010)	New Features: <ul style="list-style-type: none">Ability to upload files of any type (documents, archives, etc) Improvements: <ul style="list-style-type: none">Added image thumbnail cachingImproved column view in Display Item form (renders as link)
v1.43 (July 6, 2010)	Bugs Fixed: <ul style="list-style-type: none">Fixed item editing in Datasheet view, when list has Image Upload columnFixed error with 6622 Event ID in Event Viewer (Field type DummyField has duplicated definition) Improvements: <ul style="list-style-type: none">Improved performance

v1.42 (June 15, 2010)	Bugs Fixed: <ul style="list-style-type: none"> Fixed image uploading issue on external web site
v1.41 (June 11, 2010)	Improvements: <ul style="list-style-type: none"> Improved Setup Wizard
v1.41 (June 2, 2010)	Bugs Fixed: <ul style="list-style-type: none"> Fixed ImageUpload behavior in custom New/Edit and display forms Fixed "Resize large images" feature and small images uploading (image was not uploaded in some cases)
v1.4 (May 13, 2010)	New Features: <ul style="list-style-type: none"> SharePoint 2010 support added Bugs Fixed: <ul style="list-style-type: none"> Fixed GetFieldValueAsHTML() and GetFieldValueAsText() methods
v1.32 (March 16, 2010)	Bugs Fixed: <ul style="list-style-type: none"> Fixed image uploading from Internet site (image URL is server relative now, not absolute)
v1.31 (March 16, 2010)	Bugs Fixed: <ul style="list-style-type: none"> Fixed thumbnail displaying (was not shown in list view for users with Read permission and for anonymous users)
v1.3 (February 22, 2010)	New Features: <ul style="list-style-type: none"> Added image thumbnails Added image resizing Bugs Fixed: <ul style="list-style-type: none"> Fixed Image upload column deleting from list when list has 2 or more Image Upload columns
v1.21 (February 2, 2010)	Bugs Fixed: <ul style="list-style-type: none"> Problem when image was uploaded by user with Contributor permissions Problem with attachments (after Image Upload upgrade)
v1.2 (February 1, 2010)	Bugs Fixed: <ul style="list-style-type: none"> Problem with product version (Setup Wizard only)
v1.2 (January 25, 2010)	New Features: <ul style="list-style-type: none"> Added options to restrict image size on list item Edit/Display forms: <ul style="list-style-type: none"> <i>Use original image size</i> <i>Specify image size</i> (width, height) <i>Limit image size</i> (Max Width, Max Height)
v1.1 (January 12, 2010)	New Features: <ul style="list-style-type: none"> Added options to restrict image size on list view: <ul style="list-style-type: none"> <i>Use original image size</i> <i>Specify image size</i> (width, height) <i>Limit image size</i> (Max Width, Max Height)

- Added **Show As Link** option to show image in list view as link to image with original size

Improvements:

- Improved Setup Wizard

v1.0
(November 2, 2009)

Initial Release

See Also



[Cascaded Lookup Column](#)

Cascaded Lookup Column allows building relationship between parent and child columns, the data selected in one field will determine the options presented in another.



[Category Column](#)

Category Column allows tracking, organizing and grouping list items. Outlook 2007 approach for elements categorization, easy indicator color changing and using of advanced tooltip, provide a high professional component style.



[Column Data Adapter](#)

Column Data Adapter is an extension component providing ability to use ArtfulBits Columns in Microsoft Access forms, reports and Microsoft Excel.



[Column Permissions](#)

Column Permissions allows you to manage access to list content on column level. Permissions can be assigned for individual users and for SharePoint groups as well and are effective in forms and list views, as well as in the SharePoint Alerts, RSS, Datasheet and even during exporting to Excel and opening with Access.



[Cross-Site Lookup Column](#)

Use Cross-Site Lookup Column for getting data from any site within site collection. Component includes a powerful function of searching over lookup list. This function provides substring matching in selected column which is very useful for large lists (over 50-100 items).



[Discussion Column](#)

Need to organize well formatted conversation in the list item without enabling list versioning? Discussion Column is the right choice. Component allows entering rich text with formatting, images, tables, hyperlinks and other features.



[Email Web Part](#)

ArtfulBits Email Web Part allows sending e-mail messages directly from Microsoft SharePoint site. You can notify task assigned users, send gratitude or just send regular e-mail message, etc.



[Follow-Up Column](#)

Follow-Up Column enables due date flags similar to Outlook follow-up functionality. Applying of flags to the list item allows adding of visual reminder in a natural way.



[KPI Column](#)

KPI (Key Performance Indicator) Column is simple graphical scorecards that can be used to evaluate business data against business goals. With this column you reduce risk to overlook information about the status of value.



[Link to Document Column](#)

Link to Document Column allows referencing files and folders placed at Document Library and provides easy and intuitive way to download files directly from column. Use this column to provide a browsing interface that allows users to browse to an object to link to

instead of typing a URL.



Parent Selector Column

Parent Selector Column is used for organizing hierarchical relations in SharePoint list. Picker dialog allows choosing data from large lists. Standard Lookup column can be easily converted to Parent Selector column and vice versa.



Professional Calendar Web Part

Professional Calendar Web Part provides following key benefits: it allows combining events from different SharePoint Lists, from any SharePoint Site, in one Calendar view; allows specifying different color sets for different event sources; supports on-the-fly AJAX-enabled editing features in Outlook like style; and other enhanced functionalities.



Progress Column

Progress Column provides users with the ability to make SharePoint lists more visualized by displaying numerical data on the page using percentage-based progress bar. Professional progress bar style will make your SharePoint list really modern and stylish.



Video

Video Column and Video Web Part are powerful controls made for uploading, managing, linking and playing video files. These controls support variety of video files that can be uploaded from computer, or linked from SharePoint library or streamed from direct URL.

Remarks

Information in this document may be outdated. Please, visit www.artfulbits.com for the latest product version.