

ArtfulBits Calendar Web Part

for Microsoft® SharePoint® 2010



User Guide

Overview	1
Feature List	3
Why ArtfulBits Calendar Web Part?	3
How to Use	4
How to create new List View with ArtfulBits Calendar?	5
How to customize events tooltip?	6
Calendar Event Coloring	9
Calendar Sources Filtering	12
Release Notes	13
See Also	15
Remarks	16

Overview

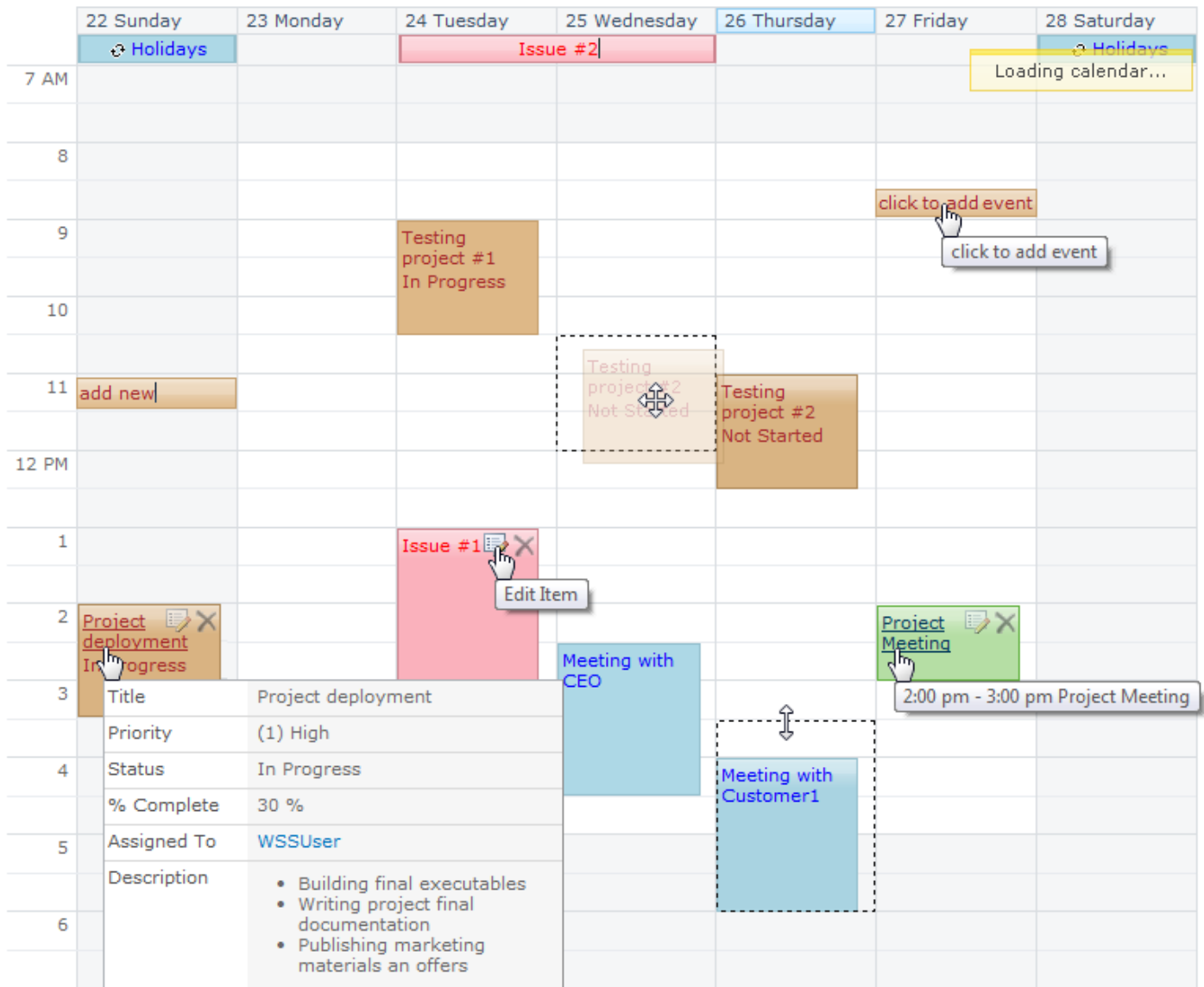
ArtfulBits Calendar Web Part provides with three key benefits:

- **Multisource support.** ArtfulBits Calendar combines events from SharePoint Lists of any type, from any SharePoint site, in one Calendar view.
- **Using different colors for events.** ArtfulBits Calendar allows specifying different color sets for different event sources of your need or use default one.
- **On-the-Fly AJAX-enabled features,** including adding, editing, dragging, resizing and deleting events in Outlook 2007 like style.

Additionally Web Part uses AJAX functionality for calendar standard commands, such as Expand All, Collapse All, change calendar view, data navigation, etc. Another ArtfulBits Calendar nice advantage is supporting all SharePoint standard themes.

← → August 22 - August 28 2010

1 Day 7 Week 31 Month



ArtfulBits Calendar Web Part is user friendly and has simple interface (as standard SharePoint calendar), allowing users to easily create new calendar events with a single click! Editing features make working with SharePoint easy and pleasant. To change the date of an event, you simply drag and drop it to the appropriate calendar cell. To change the event time frame, simply resize the event to the correct duration of the event. Useful addition is the customizable extended tooltip that allows tracking selected event's properties.

Feature List

Feature	SharePoint Foundation 2010	SharePoint Server 2010
Aggregating events from multiple SharePoint lists, from any site, in one Calendar view	✓	✓
Supporting any SharePoint list type (not only Calendar list) on any location	✓	✓
Binding to SQL	✓	✓
On-the-Fly events dragging, resizing, editing	✓	✓
Adding and deleting events with a single click	✓	✓
AJAX support	✓	✓
User permissions for Calendar sources	✓	✓
Calendar source filtering by query parameters	✓	✓
Programmatic Calendar source filtering by client-side scripts	✓	✓
Customizable extended tooltip	✓	✓
Color customization for source list events (Background color, Text color)	✓	✓
Event coloring accordingly to event column values	✓	✓
ArtfulBits Category Column integration	✓	✓
Quick date navigation (using cross-browser Date & Time picker)	✓	✓
List view toolbar	✓	✓
Cross-browser support (IE6+, Mozilla Firefox, Opera, Google Chrome, Safari)	✓	✓
SharePoint standard themes support	✓	✓
Calendar resizing support to fit your web site's design	✓	✓
Language pack support (desired localization could be added by request)	✓	✓

Why ArtfulBits Calendar Web Part?

ArtfulBits Professional Calendar Web Part can be used instead of built-in SharePoint Calendar. It provides with powerful capabilities for much more convenient events manipulation.

How to Use

ArtfulBits Calendar can show items from simple list in Calendar view or combine items from several SharePoint lists. The list of any type is supported and it could be placed into any site on any location.

Calendar Picker -- Webpage Dialog

Specify Calendar settings

Calendar Name: Tasks

Site: ☒ Select from current Site Collection
Calendar Demo
☐ Manually type Web URL

List: Tasks

List View: All Tasks

Start Date: Start Date

End Date: Due Date

Title: Title

Location: Status

Background Color: BurlyWood
☐ Use dynamically generated color

Text Color: Brown
☐ Use dynamically generated color

Tooltip: ☐ Simple ☒ Extended

Available columns:

- Attachments
- Created
- Created By
- Due Date
- Folder Child Cou
- ID
- Item Child Coun
- Modified
- Modified By

Show in tooltip:

- Title
- Priority
- Status
- % Complete
- Assigned To
- Description

OK Cancel

ArtfulBits Professional Calendar

Calendar Settings

Calendars in view:

- Calendar
- Tasks
- Issues
- Meeting

New Calendar

Default Scope

☐ Day
☐ Week
☒ Month

You can change this at any time while using the calendar.

☒ Allow add items on-fly
to: Tasks
Item Add Mode:
☒ Inline
☐ New Item Form

☒ Allow edit items on-fly
Item Edit Mode:
☒ Inline
☐ Edit Item Form

☒ Allow drag items on-fly

☒ Allow resize items on-fly

☒ Allow delete items on-fly

AJAX Type: Full

Toolbar Type:
☒ No Toolbar
☐ List View Toolbar

Appearance
Layout
Advanced

OK Cancel Apply

On **Calendar Settings** panel, you can add new Calendar source to Calendar view or edit existing Calendars. On Calendar Picker page choose site from current site collection or select **Manually type Web URL** and type full path to get site from external site collection (ex. <http://server:port/sites/testsite>) and click **Resolve** button. Filtering by list view is supported as well. Start Date, End Date and Title columns are required, Location is optional. See "[Calendar Event Coloring](#)" and "[How to customize event tooltip?](#)" sections to customize Calendar color and tooltip settings.

You can also specify other Calendar settings:

- **Default Scope** determines in which mode Calendar will be displayed by default (**Day**, **Week** or **Month**).

- To allow on-the-fly adding of items directly from calendar interface, check **Allow add items on-fly** and specify Calendar, for which items will be added. Available options: Inline or New Item Form (displayed as modal dialog window)
- Check **Allow edit items on-fly** to enable item editing. Available options: Inline or Edit Item Form (displayed as modal dialog window).
- On-the-fly items dragging, resizing or deleting could be suppressed by specifying appropriate options in **Calendar Settings** panel.
- Showing of list view Toolbar on the top of Calendar Web Part could be enabled by choosing **List View Toolbar** option.

How to create new List View with ArtfulBits Calendar?

To add new List View with ArtfulBits Calendar Web Part, do the following:

1. Create standard SharePoint Calendar View for existing list
2. Close standard Calendar web part (click **Close** command on Web Part Menu)
NOTE: Do not delete standard calendar, just close it!
3. Add ArtfulBits Calendar Web Part on page
4. Add current list view to Calendars (click on **New Calendar** link in Calendar Web Part editor and specify appropriate settings)
5. You can allow adding of items directly from calendar interface by checking **Allow add items on-fly** checkbox and choose newly added Calendar.
6. Set **Toolbar Type** to **List View Toolbar** for showing standard SharePoint List toolbar.

How to customize events tooltip?

ArtfulBits Calendar provides with two tooltip modes: **Simple** and **Extended**. You can specify tooltip mode on adding or editing calendar.

August, 2010

Expand All Collapse All | Day Week Month

Sunday	Monday	Tuesday	Wednesday	Thursday	Friday	Saturday
1 Holidays	2 Issue #2 9:00 am Testing	3 4:00 pm Testing	4 2:30 pm - 5:00 p Meeting with CEC	5	6 2:00 pm - 3:00 p Project Meeting	7 Holidays
8	9	10	11 2:30pm-5:00pm	12	13 2:00 pm - 3:00 pm Project Meeting	14 Holidays
Business Trip in USA						
15 Holidays	16 1:00 pm - 3:30 p Issue #1	17 Project deployment			21 Holidays	
22 Holidays	23 8/16/2010 1:00 PM 11:00 am - 12:30 Testing project #			28 Holidays		
29 Holidays	30 4:00 pm - 6:00 p Meeting with Cus	31			4 Holidays	

Title	Project deployment
Priority	(1) High
Status	In Progress
% Complete	30 %
Assigned To	WSSUser
Description	<ul style="list-style-type: none">• Building final executables• Writing project final documentation• Publishing marketing materials an offers

To show single column in tooltip, set Tooltip to **Simple** and choose a column from drop down list. This column value will be displaying in tooltip.

To show data from more than one column as it is shown on the image below, do the following:

- 1) Add standard SharePoint calculated column to this list to combine values from multiple lists. To display data in "{Start Time} – {End Time}" format, set formula:

12-hour format:

```
=IF(HOUR([Start Time])=0,12,IF(HOUR([Start Time])>12,HOUR([Start Time])-12,HOUR([Start Time]))&":"&TEXT(MINUTE([Start Time]),"00")&IF(HOUR([Start Time])<12,"am","pm")&"-"&IF(HOUR([End Time])=0,12,IF(HOUR([End Time])>12,HOUR([End Time])-12,HOUR([End Time]))&":"&TEXT(MINUTE([End Time]),"00")&IF(HOUR([End Time])<12,"am","pm"))
```

or **24-hour format**:

=TEXT([Start Time],"hh:mm")&" - "&TEXT([End Time],"hh:mm")

- 2) On calendar's edit page specify Tooltip to Simple and choice this calculated column from drop down.

Extended tooltip shows calendar events data on table view. Set Tooltip to Extended and add columns from "available columns:" to "Show in tooltip:" section. Buttons Up/Down allows you to change columns orders in tooltip.

The screenshot shows a dialog box titled "Calendar Picker -- Webpage Dialog" with a close button (X) in the top right corner. The main area is titled "Specify Calendar settings" and contains several configuration sections:

- Calendar Name:** A text box containing "Tasks".
- Site:** Two radio buttons. The first, "Select from current Site Collection", is selected and followed by a dropdown menu showing "Calendar Demo". The second is "Manually type Web URL".
- List:** A dropdown menu showing "Tasks".
- List View:** A dropdown menu showing "All Tasks".
- Start Date:** A dropdown menu showing "Start Date".
- End Date:** A dropdown menu showing "Due Date".
- Title:** A dropdown menu showing "Title".
- Location:** A dropdown menu showing "Status".
- Background Color:** A color selection box showing "BurlyWood" with a checkbox for "Use dynamically generated color" below it.
- Text Color:** A color selection box showing "Brown" with a checkbox for "Use dynamically generated color" below it.
- Tooltip:** Two radio buttons. "Simple" is unselected, and "Extended" is selected. Below them are two list boxes:
 - Available columns:** A list box containing "Attachments", "Created", "Created By", "Due Date", "Folder Child Cou", "ID", "Item Child Coun", "Modified", and "Modified By".
 - Show in tooltip:** A list box containing "Title", "Priority", "Status", "% Complete", "Assigned To", and "Description".Between the two list boxes are two arrow buttons: a right-pointing arrow and a left-pointing arrow. To the right of the "Show in tooltip" list box are two more arrow buttons: an up-pointing arrow and a down-pointing arrow.

At the bottom of the dialog are two buttons: "OK" and "Cancel".

Calendar Event Coloring

ArtfulBits Calendar Web Part provides three ways to customize background and text color for calendar events:

1. You can set a static color for all calendar events of each calendar source
2. You can specify color accordingly to event column values by using SharePoint Choice or Calculated columns for source list. Check **“Use dynamic generated color”** and choose a column from dropdown list on the calendar picker page.

You can add Choice column with set of color names (for e.g. Red, Yellow, Blue, Green, etc.) to the list and get value from this column for calendar source.

Following sample shows how to add color for events using SharePoint Calculated column:

- a) Add SharePoint Calculated column to the SharePoint List
- b) Specify SharePoint calculated formula to return HTML color accordingly to the list item values. The following formula returns color according to Tasks list item Priority column value:

=IF([Priority]="(1) High","red",IF([Priority]="(2) Normal","orange","green"))

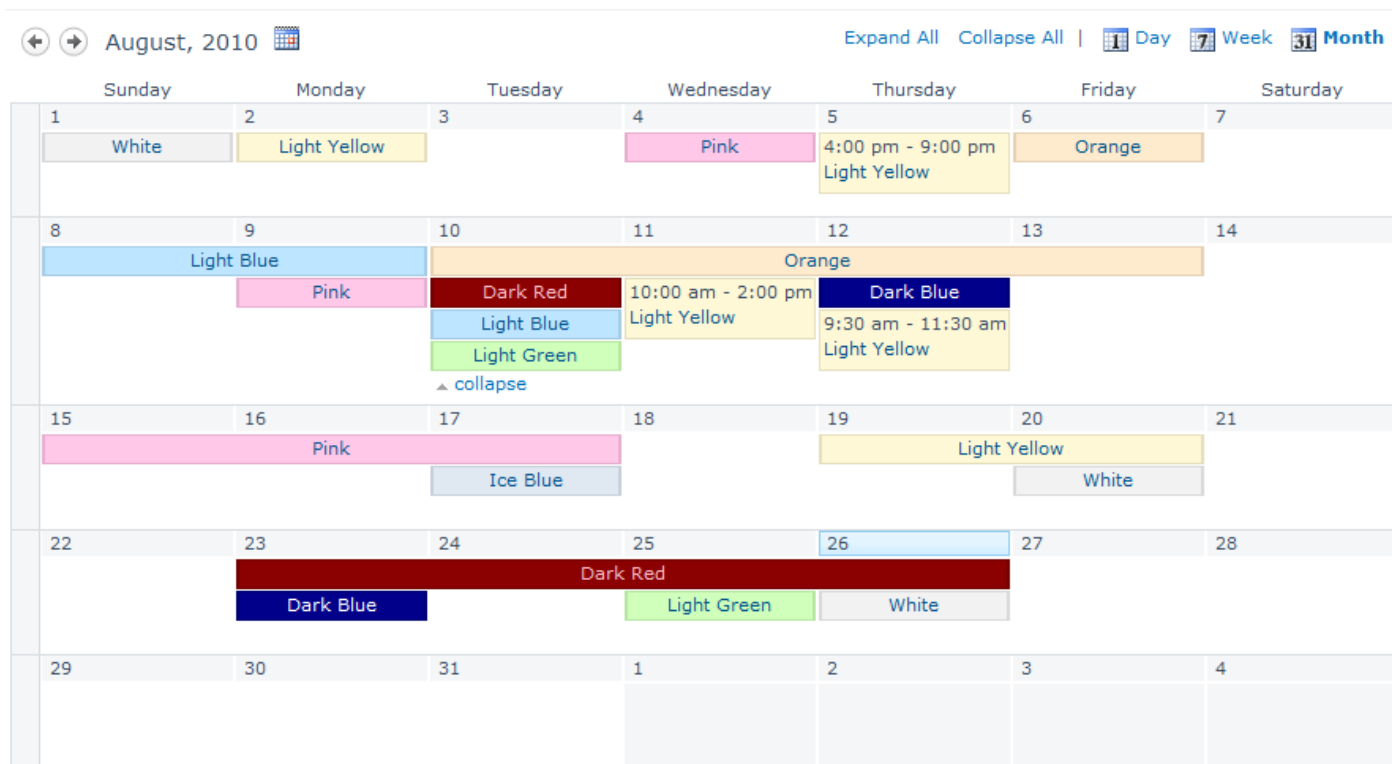
- c) In Calendar source picker dialog check **“Use dynamic generated color”** for Background Color setting and choice Calculated column from dropdown list

Note: You can specify Text Color for calendar events too as shown above.

3. ArtfulBits Calendar Web Part supports ArtfulBits Category column integration like as in Outlook 2007. Calendar events color will be automatically get from Category column value.

For more information regarding Category column please visit:

<http://www.artfulbits.com/SharePointProducts/Category.aspx>.



This example list contains ArtfulBits Category column (Color Category) for events background color and Calculated column (Text Color) with formula:

`=IF(ColorCategory="Dark Blue","white",IF(ColorCategory="Dark Red","pink",""))`

Calendar Picker -- Webpage Dialog

Specify Calendar settings

Calendar Name: Color Calendar

Site: ☒ Select from current Site Collection
Color Calendar Demo
☐ Manually type Web URL

List: ColorCalendarList

List View: Calendar

Start Date: Start Time

End Date: End Time

Title: ColorCategory

Location: Location

Background Color: Default
☒ Use dynamically generated color
ColorCategory

Text Color: Default
☒ Use dynamically generated color
TextColor

OK Cancel

Calendar Sources Filtering

ArtfulBits Calendar Web Part provides two ways to filter calendar sources:

1. Filtering by query parameters

You can use CalendarFilter query parameter to filter Calendar sources. For Example, if you have five Calendar sources in the following order: calendar1, calendar2, calendar3, calendar4, calendar5, then to hide calendar2 and calendar5 set the CalendarFilter query parameter value to 10110. Full URL is like below:

http://servername/site1/calendar.aspx?CalendarFilter=10110

0 at ith position hides ith Calendar source, 1 – shows, so we have binary logic in place.

2. Programmatic filtering by client-side scripts

You can use the following client-side script functions to filter Calendar sources:

- *Calendar_Show(index)* – shows Calendar source at the specific index in the collection.
- *Calendar_Hide(index)* – hides Calendar source at the specific index in the collection.
- *CalendarFilter_Get(index)* – determines whether Calendar source by the specific index is shown (true if Calendar source is shown; otherwise, false).

In the following sample Content Editor Web Part is added to the page with HTML putting 5 checkboxes into the page and script filtering Calendar sources. Content Editor Web Part HTML is the following:

```
<input id="filter0" onclick="this.checked ? CalendarFilter_Show(0) : CalendarFilter_Hide(0)" type="checkbox"
checked="checked" value="on"/> Calendar 1<br/>
<input id="filter1" onclick="this.checked ? CalendarFilter_Show(1) : CalendarFilter_Hide(1)" type="checkbox"
checked="checked" value="on"/> Calendar 2<br/>
<input id="filter2" onclick="this.checked ? CalendarFilter_Show(2) : CalendarFilter_Hide(2)" type="checkbox"
checked="checked" value="on"/> Calendar 3<br/>
<input id="filter3" onclick="this.checked ? CalendarFilter_Show(3) : CalendarFilter_Hide(3)" type="checkbox"
checked="checked" value="on"/> Calendar 4<br/>
<input id="filter4" onclick="this.checked ? CalendarFilter_Show(4) : CalendarFilter_Hide(4)" type="checkbox"
checked="checked" value="on"/> Calendar 5<br/>
```

```
<script type="text/javascript">
//Updates checkboxes values on page load
function InitElements () {
    document.getElementById("filter0").checked = CalendarFilter_Get(0);
    document.getElementById("filter1").checked = CalendarFilter_Get(1);
    document.getElementById("filter2").checked = CalendarFilter_Get(2);
    document.getElementById("filter3").checked = CalendarFilter_Get(3);
    document.getElementById("filter4").checked = CalendarFilter_Get(4);
}
_spBodyOnLoadFunctionNames.push("InitElements"); </script>
```

Release Notes

Version	Notes
v1.5 (June 01, 2011)	New Features: <ul style="list-style-type: none"> added binding to SQL [PRO] added Calendar source filtering by query parameters [PRO] added programmatic Calendar source filtering by client-side scripts [PRO] added ability to expand events by default Improvements: <ul style="list-style-type: none"> Added support for new licensing model (ArtfulBits License Manager v1.4)
V1.43 (April 13, 2011)	New Features: <ul style="list-style-type: none"> Added German and Polish localization Bugs Fixed: <ul style="list-style-type: none"> Fixed adding items on-the-fly for daily view
V1.42 (March 05, 2011)	Bugs Fixed: <ul style="list-style-type: none"> Fixed item rendering for IE7
V1.41 (October 01, 2010)	Bugs Fixed: <ul style="list-style-type: none"> Fixed item coloring
V1.4 (September 18, 2010)	New Features: <ul style="list-style-type: none"> Added user permissions for Calendar sources
V1.31 (September 08, 2010)	Bugs Fixed: <ul style="list-style-type: none"> Fixed project dependency on SharePoint 2007 assemblies (SharePoint 2010 only)
V1.3 (September 03, 2010)	New Features: <ul style="list-style-type: none"> Added SharePoint 2010 support Added cross site collection and cross Web application support for Calendar source
V1.23 (June 17, 2010)	Bugs Fixed: <ul style="list-style-type: none"> Fixed objects disposing on calendar settings page
V1.22 (June 11, 2010)	Improvements: <ul style="list-style-type: none"> Improved Setup Wizard Bugs Fixed: <ul style="list-style-type: none"> Fixed "Enable Professional Calendar" functionality (error was thrown when standard view for SharePoint List with ArtfulBits Calendar web part is created)
V1.21 (March 16, 2010)	Improvements: <ul style="list-style-type: none"> Calendar event Start Date / End Date can be associated with Calculated column

	Bugs Fixed: <ul style="list-style-type: none"> Fixed dragging and adding new event on “Work Week” view Fixed tooltip settings on adding new calendar to associated calendar’s list
V1.2 (March 15, 2010)	New Features: <ul style="list-style-type: none"> Added quick date navigation (using cross-browser Date & Time picker) Added event coloring accordingly to event column values Added ArtfulBits Category Column integration Added mechanism to switch between “Work Week” and “Full Week” on calendar’s weekly view Improvements: <ul style="list-style-type: none"> Calendar overall performance improved Bugs Fixed: <ul style="list-style-type: none"> Fixed calendar’s weekly view (Google Chrome) Fixed item’s dragging/resizing/deleting (not occurred in some cases)
v1.1 (March 04, 2010)	New Features: <ul style="list-style-type: none"> Added extended tooltip for calendar events Added Time Interval property for set hour split count Added Time Format properties for daily/weekly/monthly views to customize time displaying on calendar events Improvements: <ul style="list-style-type: none"> Disabled event resizing, when Start Date and End Date refers to the same column Displays events in all-day row, when Start Date and End Date column is Date only (not Date & Time) Bugs Fixed: <ul style="list-style-type: none"> Fixed scrollbars issues (when calendar dimensions are not relative) Calendar events look & feel fixed for daily/weekly view (Opera browser)
v1.0 (February 24, 2010)	Initial Release

[PRO] - Professional edition only.

See Also



[Cascaded Lookup Column](#)

Cascaded Lookup Column allows building relationship between parent and child columns, the data selected in one field will determine the options presented in another.



[Category Column](#)

Category Column allows tracking, organizing and grouping list items. Outlook 2007 approach for elements categorization, easy indicator color changing and using of advanced tooltip, provide a high professional component style.



[Column Data Adapter](#)

Column Data Adapter is an extension component providing ability to use ArtfulBits Columns in Microsoft Access forms, reports and Microsoft Excel.



[Column Permissions](#)

Column Permissions allows you to manage access to list content on column level. Permissions can be assigned for individual users and for SharePoint groups as well and are effective in forms and list views, as well as in the SharePoint Alerts, RSS, Datasheet and even during exporting to Excel and opening with Access.



[Cross-Site Lookup Column](#)

Use Cross-Site Lookup Column for getting data from any site within site collection. Component includes a powerful function of searching over lookup list. This function provides substring matching in selected column which is very useful for large lists (over 50-100 items).



[Discussion Column](#)

Need to organize well formatted conversation in the list item without enabling list versioning? Discussion Column is the right choice. Component allows entering rich text with formatting, images, tables, hyperlinks and other features.



[Email Web Part](#)

ArtfulBits Email Web Part allows sending e-mail messages directly from Microsoft SharePoint site. You can notify task assigned users, send gratitude or just send regular e-mail message, etc.



[Follow-Up Column](#)

Follow-Up Column enables due date flags similar to Outlook follow-up functionality. Applying of flags to the list item allows adding of visual reminder in a natural way.



[Image Upload Column](#)

Quick and simple way of uploading pictures. Image Upload Column provides with ability to select a picture using file browsing dialog, upload and display it in the list view.



[KPI Column](#)

KPI (Key Performance Indicator) Column is simple graphical scorecards that can be used to evaluate business data against business goals. With this column you reduce risk to overlook information about the status of value.



[Link to Document Column](#)

Link to Document Column allows referencing files and folders placed at Document Library and provides easy and intuitive way to download files directly from column. Use this column to provide a browsing interface that allows users to browse to an object to link to instead of typing a URL.



[Parent Selector Column](#)

Parent Selector Column is used for organizing hierarchical relations in SharePoint list. Picker dialog allows choosing data from large lists. Standard Lookup column can be easily converted to Parent Selector column and vice versa.



[Progress Column](#)

Progress Column provides users with the ability to make SharePoint lists more visualized by displaying numerical data on the page using percentage-based progress bar. Professional progress bar style will make your SharePoint list really modern and stylish.



[Video](#)

Video Column and Video Web Part are powerful controls made for uploading, managing, linking and playing video files. These controls support variety of video files that can be uploaded from computer, or linked from SharePoint library or streamed from direct URL.

Remarks

Information in this document may be outdated. Please, visit www.artfulbits.com for the latest product version.