

ArtfulBits List Search WebPart

for Microsoft® SharePoint®



Install Guide

System Requirements	1
Preparation for Installation.....	2
Installation	2
License Management.....	7
Activating / Deactivating Feature	10
Product Updates	11
Uninstallation / Repairing	12
Remarks	12

System Requirements

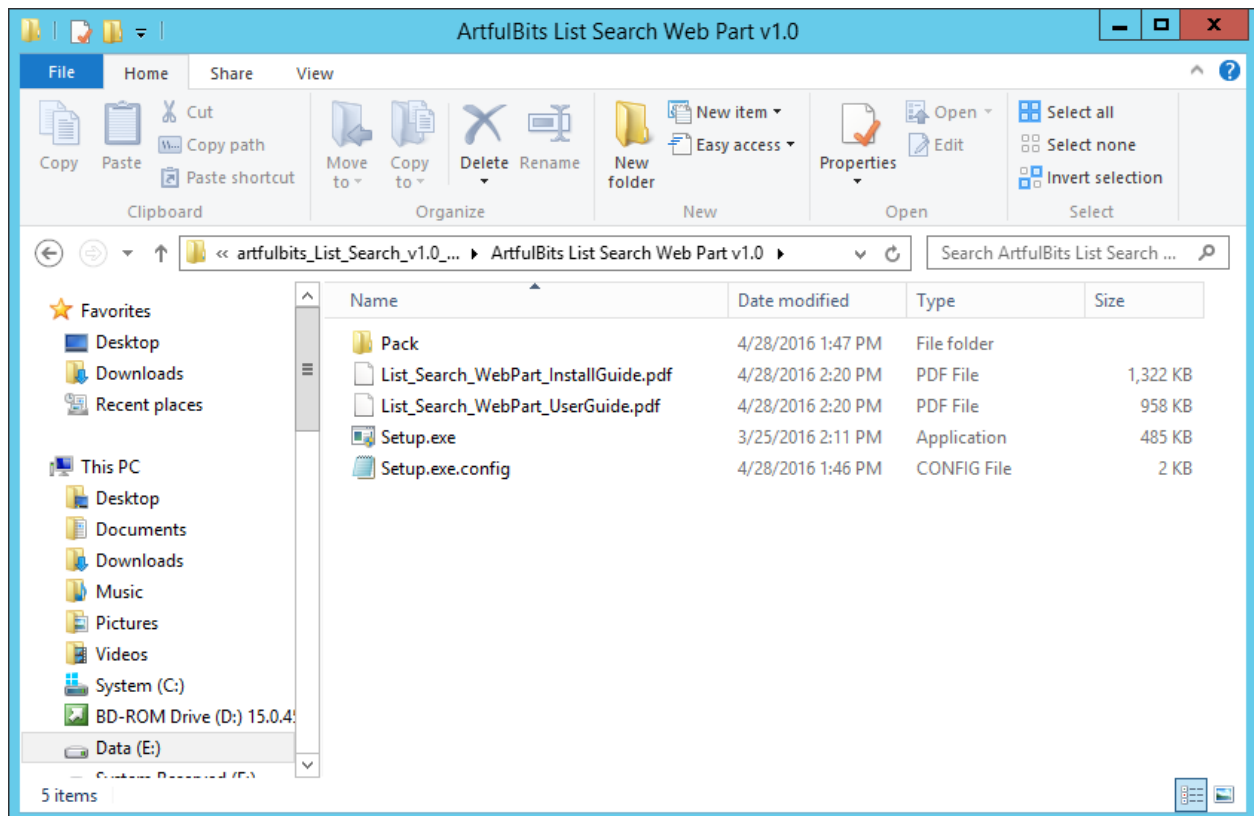
Operating Systems:	<p>Microsoft Windows Server 2008 x64 Microsoft Windows Server 2008 R2 x64 Microsoft Windows Server 2012 R2 x64</p>
Servers:	<p>SharePoint Release:</p> <ul style="list-style-type: none"> > SharePoint Foundation 2010 or SharePoint Server 2010 > SharePoint Foundation 2013 or SharePoint Server 2013 <p><i>Note: This product is not compatible with previous versions of SharePoint</i></p>
Browser:	<ul style="list-style-type: none"> > Any browser

Preparation for Installation

Before installation, please, check that your target server meets List Search Web Part system requirements (see above). Also, it is recommended to install ArtfulBits License Manager before (if it is not installed).

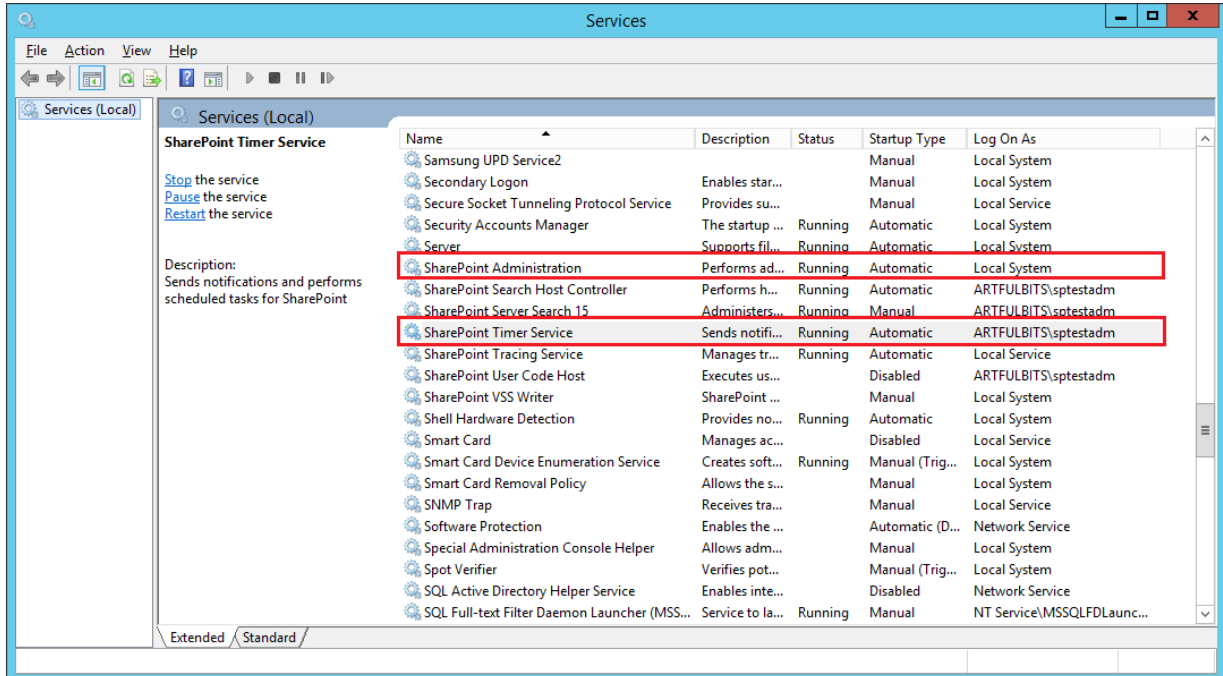
Installation

Download List Search Web Part installation package from ArtfulBits website, unpack files, and run "**Setup.exe**".

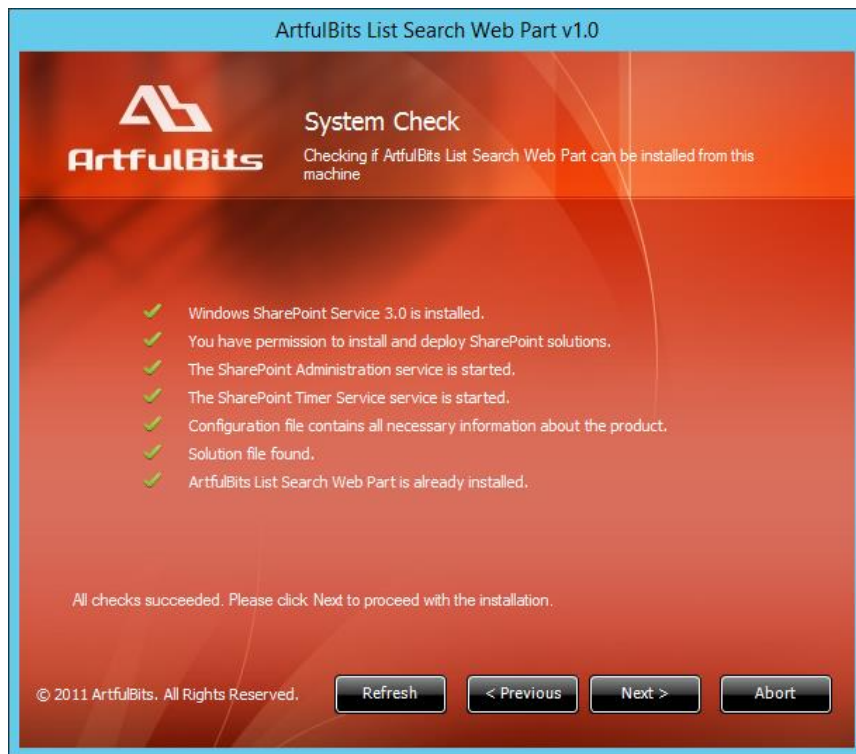
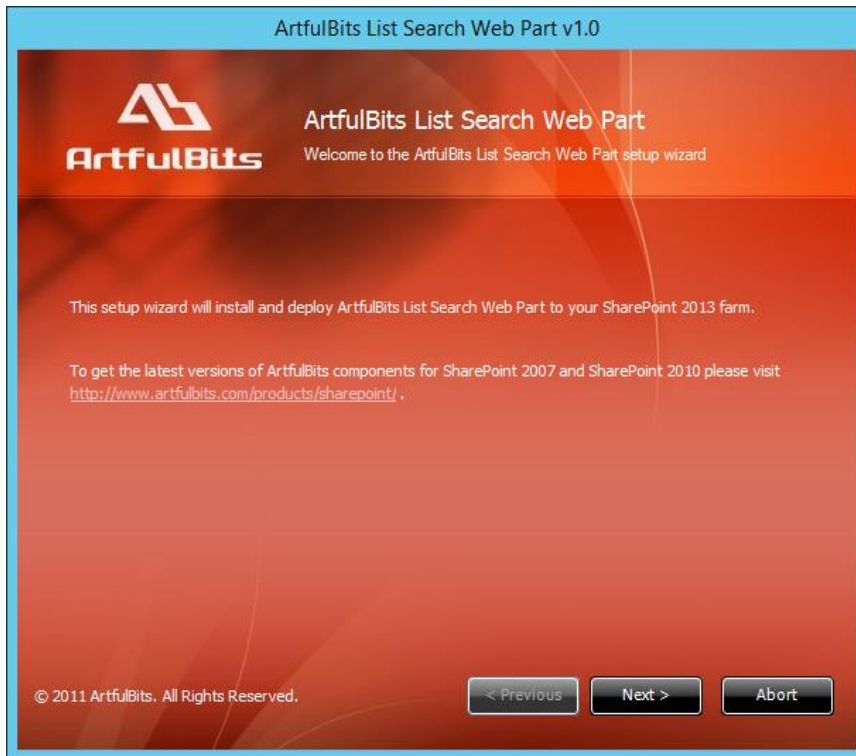


Note: You must be the SharePoint Farm Administrator and following MS Windows services should be running:

- Windows SharePoint Services Administration
- Windows SharePoint Services Timer



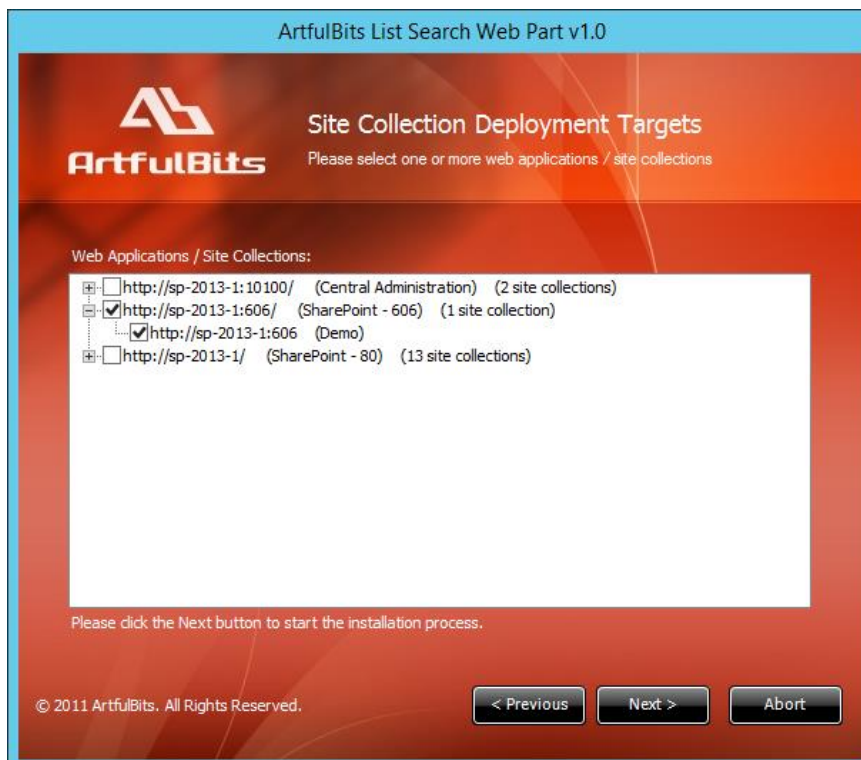
After system check is finished, click "Next".



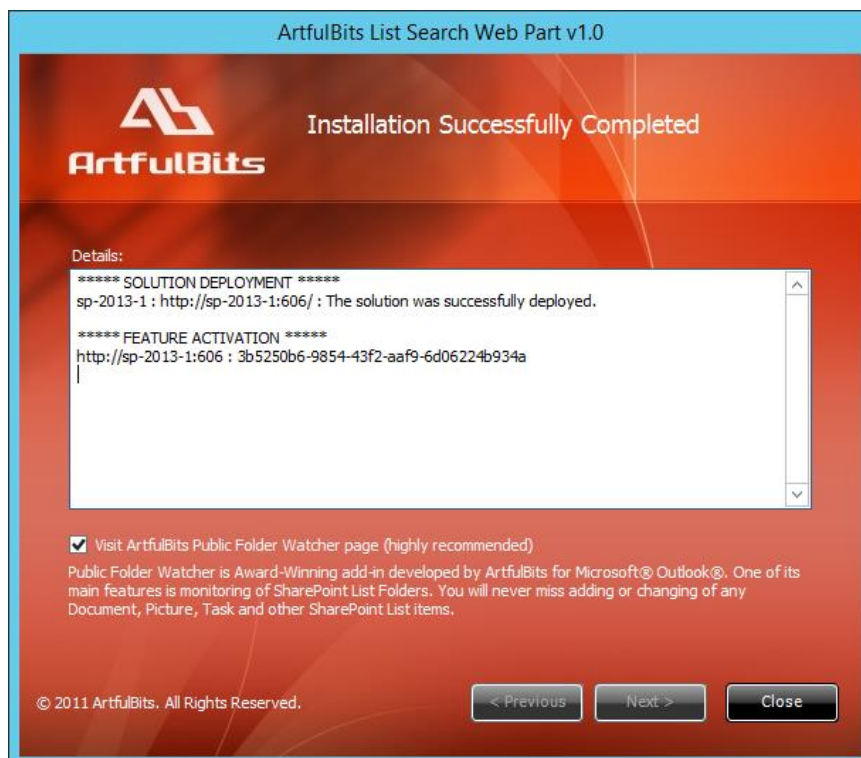
After reading License Agreement, click "Accept" and go to the next step.



Select one or more web applications and click "Next".



Wait for install to succeed, click "Next" to check deployment status details.



License Management

ArtfulBits List Search WebPart uses **Per-Farm Licensing Model** (each license is bound to single SharePoint Farm ID). For more details about licensing models please visit <http://www.artfulbits.com/purchase/licensing.aspx>.

Product works in unlicensed mode for three days from the moment of installation. In this mode all the product features are unlocked same way as with trial license. After these three days either trial license or full license should be entered for product to function.

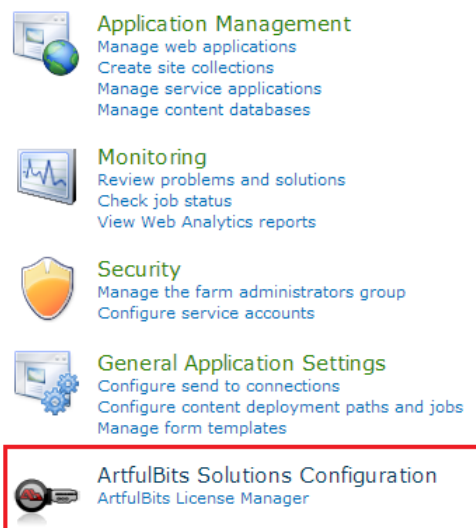
To get a Trial license navigate to:

<http://www.artfulbits.com/products/sharepoint/sales/get-trial-license.aspx?productcode=SPSRCH001>

You can buy the product by the following link:

<http://www.artfulbits.com/purchase/purchase.aspx?productcode=SPSRCH001>

After ArtfulBits License Manager is installed, go to the SharePoint Central Administration page:



Application Management
Manage web applications
Create site collections
Manage service applications
Manage content databases


Monitoring
Review problems and solutions
Check job status
View Web Analytics reports

Security
Manage the farm administrators group
Configure service accounts

General Application Settings
Configure send to connections
Configure content deployment paths and jobs
Manage form templates

ArtfulBits Solutions Configuration
ArtfulBits License Manager

This page shows all ArtfulBits products and their license statuses.

 ArtfulBits KPI Column v2.0	Professional	Full license
 ArtfulBits Link to Document Column v2.0	Standard	Full license
 ArtfulBits List Search Web Part v1.0	Evaluation	No license
 ArtfulBits Master Calendar v1.22	Standard	Full license
 ArtfulBits Parent Selector Column v2.0	Standard	Full license
 ArtfulBits Progress Column v2.0	Evaluation	No license
 ArtfulBits Shopping Cart v1.85	Standard	Full license

Click on product name to view license details.

Product

ArtfulBits List Search Web Part v1.0
ArtfulBits List Search Web Part

Product Edition

Evaluation
Please visit [following link](#) for product editions comparison chart.

License Status

No license ([delete license](#))
Note: in trial or unlicensed mode all product features are available for evaluation.
After trial period license should be purchased which will determine product edition and available feature set.
Please visit [following link](#) for product editions comparison chart.

License Operations

Farm ID:

 Enter License

[Get free trial license](#) | [Go to purchase page](#)

[Go Back](#)

If product is not licensed you can click "Enter License" link and enter license key (trial or full) into textbox. For upgrading product edition click "Convert License" and enter new license of target product edition.

License Operations

Farm ID:

 Convert License

[Go to purchase page](#)

```
1V871FKY4RQ5FLMXS3BUDVTOLIS6QHQMCMC7CP35CZKUS8M32RR4OMEO6FBUVSXNHWAD3II64W1MKS
DVBSQAPV3EIYA7OJKTC6M6811V871FKY4RQ5FLMXS3BUDVTOLIS6QHQMCMC7CP35CZKUS8M32RR4OME
O6FBUVSXNHWAD3II64W1MKSDVBSQAPV3EIYA7OJKTC6M6811V871FKY4RQ5FLMXS3BUDVTOLIS6QHQM
MC7CP35CZKUS8M32RR4OMEO6FBUVSXNHWAD3II64W1MKSDVBSQAPV3EIYA7OJKTC6M6811V871FKY
4RQ5FLMXS3BUDVTOLIS6QHQMCMC7CP35CZKUS8M32RR4OMEO6FBUVSXNHWAD3II64W1MKSDVBSQAP
V3EIYA7OJKTC6M6811V871FKY4RQ5FLMXS3BUDVTOLIS6QHQMCMC7CP35CZKUS8M32RR4OMEO6FBUVSX
NHWAD3II64W1MKSDVBSQA
```

Activate

Cancel

Go Back

Pressing "Activate" button will verify the key and in case of verification success license status will be updated.

Product Edition

Professional

Please visit [following link](#) for product editions comparison chart.

License Status

Full license

Product version: **1.x**

Note: in trial or unlicensed mode all product features are available for evaluation.

After trial period license should be purchased which will determine product edition and available feature set.

Please visit [following link](#) for product editions comparison chart.

Note: in trial or unlicensed mode **all** product features are available for evaluation. This way you will be able to try each and every feature available in the product line which will give you good understanding of what feature set will be necessary for you and it will be easier to come up with the decision which product edition should be purchased. After trial period expiration full license should be purchased which will determine product edition and available (unlocked) feature set.

Special link informing about product expiration is shown in SharePoint pages, where ArtfulBits component is used if product is using trial license or such license is "Expired" or no license is provided at all. Clicking on this link will redirect to product license status details page.

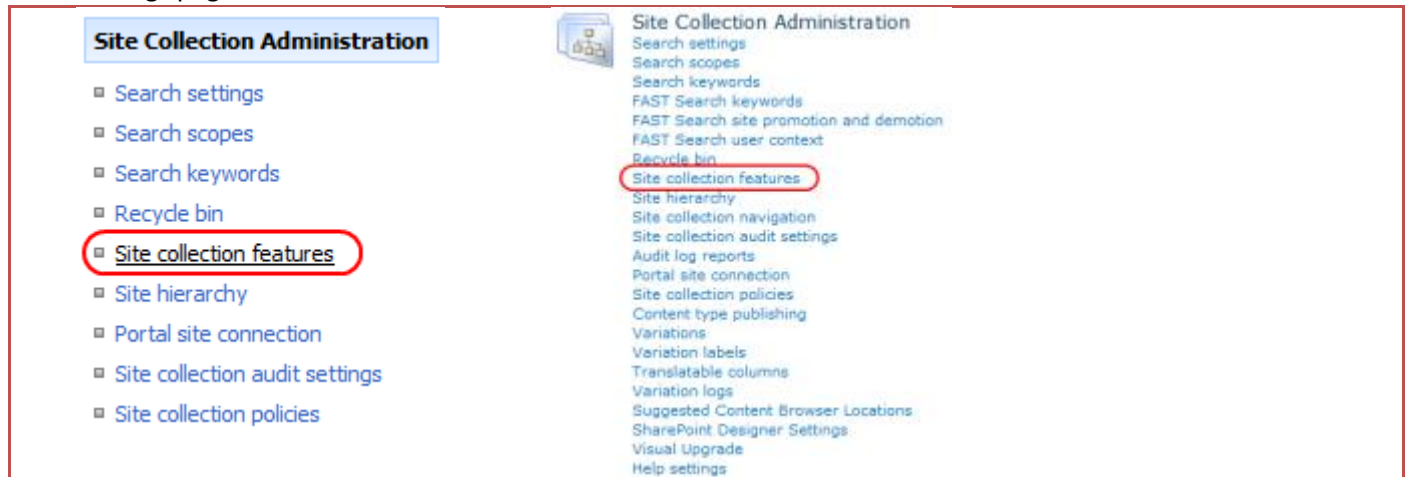
 License for ArtfulBits List Search Web Part v1.0 is not provided. Please, click here to enter free trial or purchased license.

Activating / Deactivating Feature

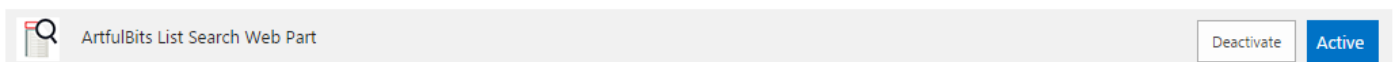
Click "Site Actions" menu in the root site of one site collection, then click "Site Settings":



Click "Site collection features" link in Site Settings page:



In SharePoint Site collection feature list, activate ArtfulBits List Search Web Part feature (if deactivated).



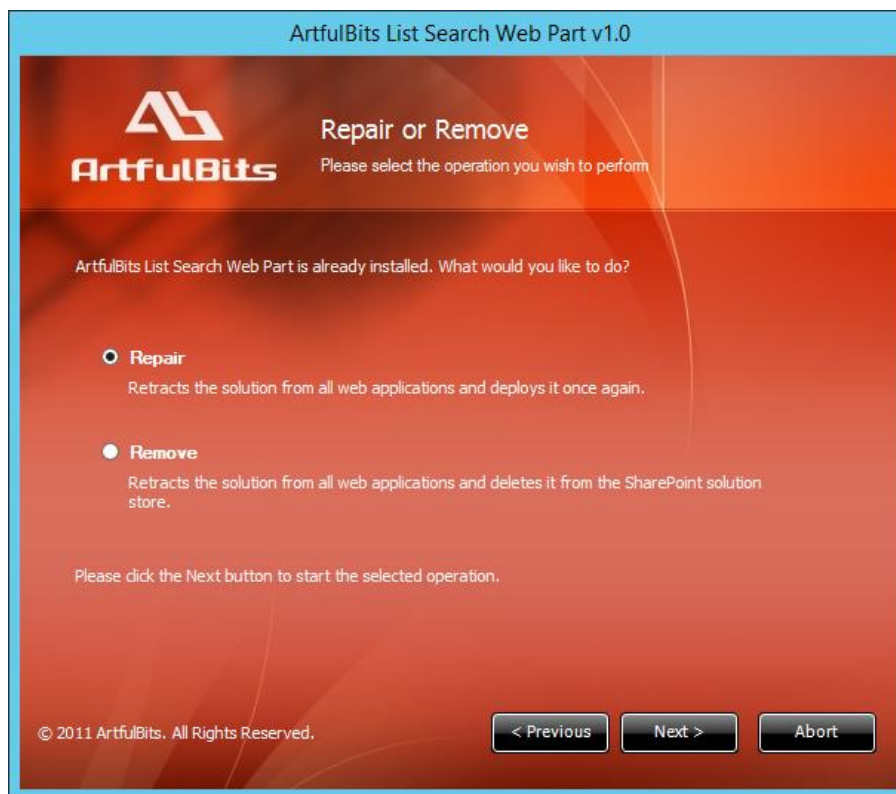
Product Updates

Process of updating ArtfulBits List Search WebPart In is pretty straightforward - just download latest [installation](#) package and execute **Setup.exe** from it. After system check completes, select an "Upgrade" option and then follow setup wizard instructions.



Uninstallation / Repairing

Execute **Setup.exe** from your installation package. On the Repair and Remove section, select Remove radio button and click "Next", the ArtfulBits List Search WebPart will be uninstalled. Or select "Repair" - to repair the ArtfulBits List Search WebPart.



Remarks

Information in this document may be outdated. Please, visit www.artfulbits.com for the latest product version.