

# ArtfulBits Master Calendar

## *for Microsoft® SharePoint®*



## Install Guide

System Requirements .....	1
Preparation for Installation.....	1
Installation .....	1
License Management .....	6
Activating / Deactivating Feature .....	9
Remarks .....	10

### System Requirements

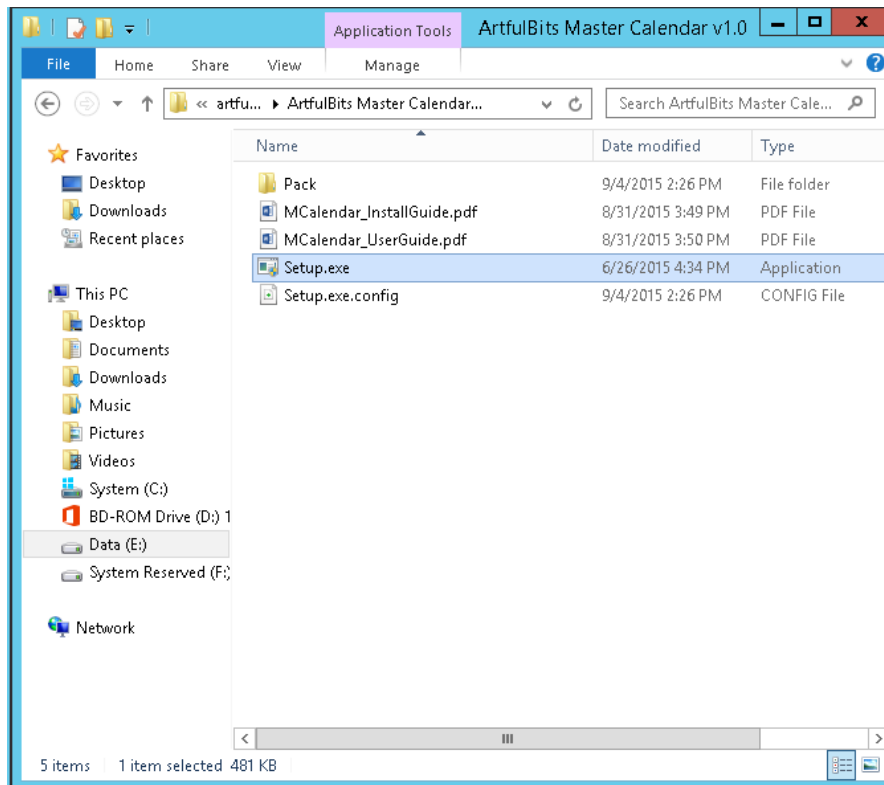
<b>Operating Systems:</b>	Microsoft Windows Server 2012 x86/x64
<b>Servers:</b>	SharePoint Release: <ul style="list-style-type: none"> <li>➤ Microsoft SharePoint Foundation 2013 or Microsoft SharePoint Server 2013 (for SP2013 products)</li> </ul>
<b>Browser:</b>	<ul style="list-style-type: none"> <li>➤ Mozilla Firefox 2.0+</li> <li>➤ Microsoft Internet Explorer 7+</li> <li>➤ Opera 9.5+</li> <li>➤ Apple Safari 3.0+</li> <li>➤ Google Chrome 2.0+</li> </ul>

### Preparation for Installation

Before installation, please, check that your target server meets Master Calendar system requirements (see above). Also, it is recommended to install ArtfulBits License Manager before (if it is not installed).

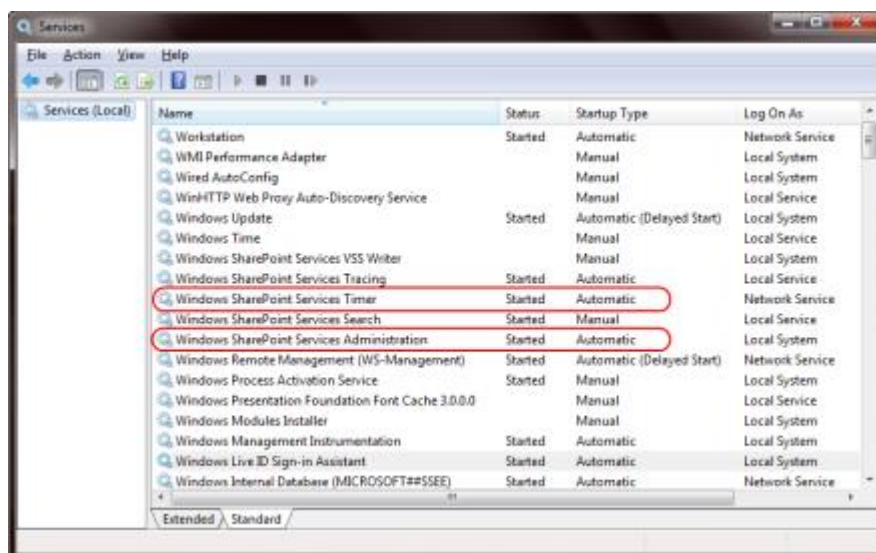
### Installation

Download Master Calendar installation package from ArtfulBits website, unpack the file, and run "**Setup.exe**".



**Note:** You must be the SharePoint Farm Administrator and following MS Windows services should be running:

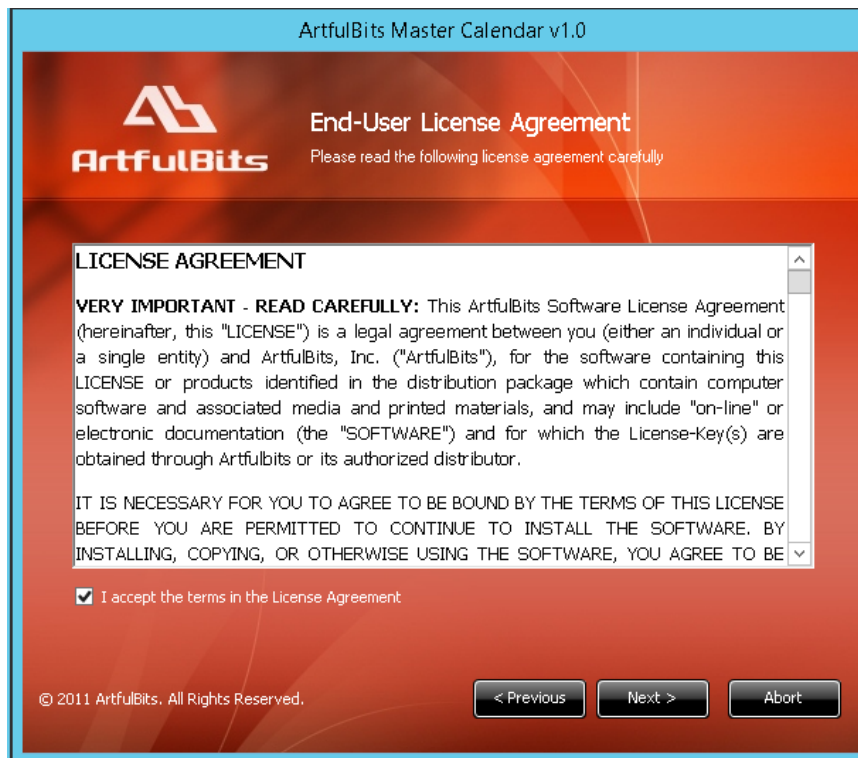
- Windows SharePoint Services Administration
- Windows SharePoint Services Timer



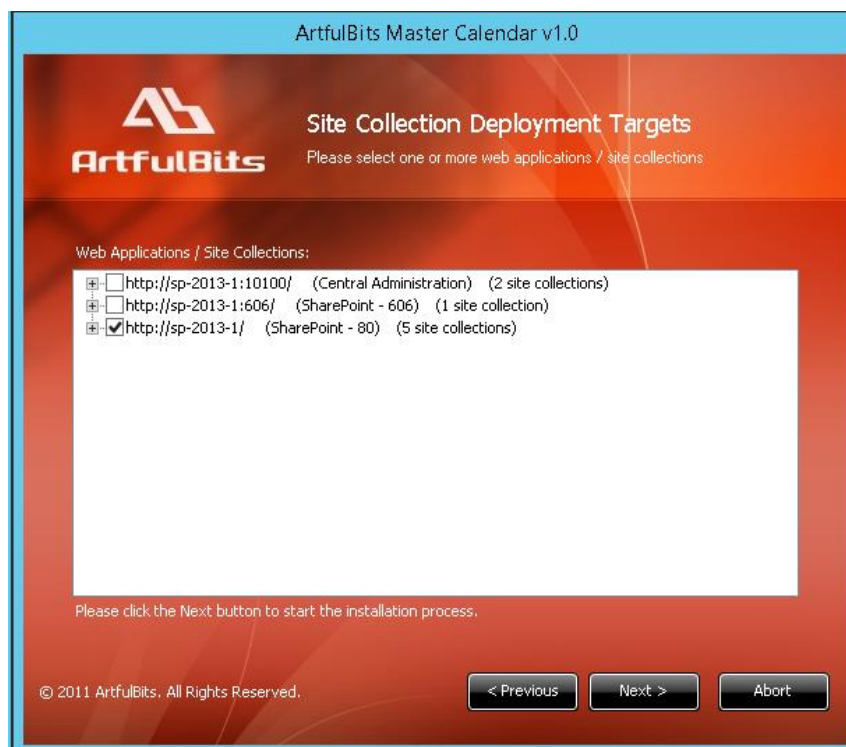
After system check is finished, click "Next".



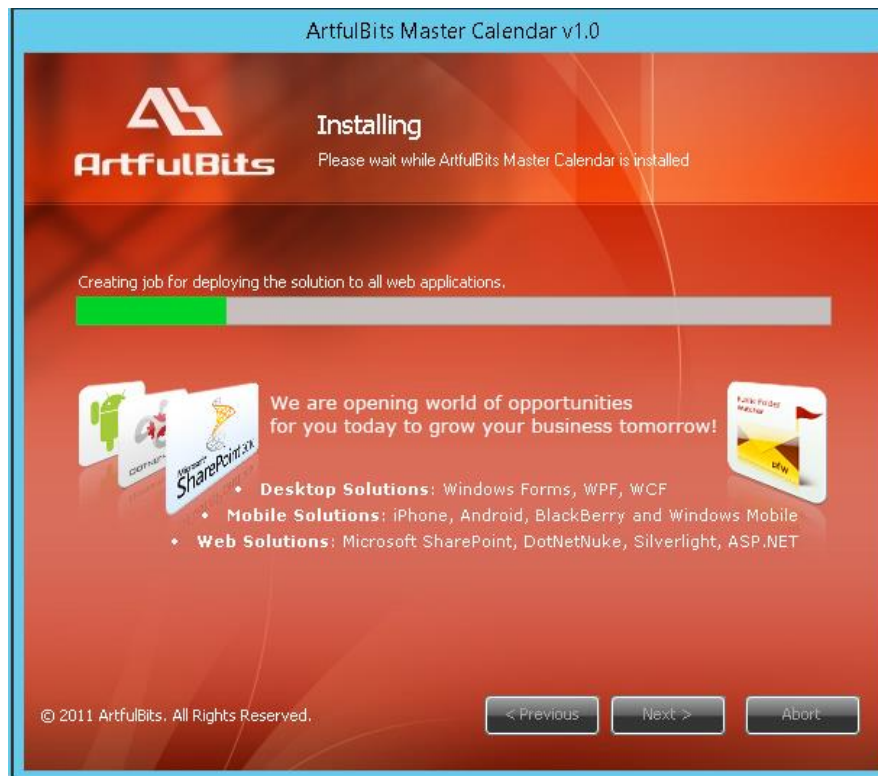
After reading License Agreement, click "Accept" and go to next step.



Select one or more web applications and click "Next".



Wait for install to succeed, click "Next" to check deployment status details.



## License Management

Master Calendar uses **Per-Farm Licensing Model** (each license is bound to single SharePoint Farm ID). For more details about licensing models please visit <http://www.artfulbits.com/purchase/licensing.aspx>.

Product works in unlicensed mode for three days from the moment of installation. In this mode all the product features are unlocked same way as with trial license. After these three days either trial license or full license should be entered for product to function.

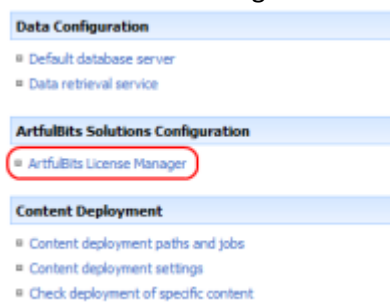

To get a Trial license navigate to:

<http://www.artfulbits.com/products/sharepoint/sales/get-trial-license.aspx?productcode=SPKPIC001>








You can buy the product by the following link:

<http://www.artfulbits.com/purchase/purchase.aspx?productcode=SPKPIC001>

After ArtfulBits License Manager is installed, go to the SharePoint Central Administration page:

SharePoint 2007	SharePoint 2010
<p>Choose "Operations". Click on "ArtfulBits License Manager":</p> 	<p>Click on "ArtfulBits License Manager":</p> 

This page shows all ArtfulBits products and their license statuses.

Product	Edition	License Status
 ArtfulBits Cascaded Lookup Column v1.38	Standard	Full license
 ArtfulBits Category Column v1.6	Evaluation	No license
 ArtfulBits Column Data Adapter v1.0	Evaluation	Trial license (Expiring in 13 day(s))
 ArtfulBits Column Permissions v1.0	Standard	Full license
 ArtfulBits Cross-Site Lookup Column v1.7	Evaluation	Trial license (Expiring in 18 day(s))
 ArtfulBits Discussion Column v1.54	Standard	Full license
 ArtfulBits KPI Column v1.31	Evaluation	No license



Click on product name to view license details.

Product	<b>ArtfulBits KPI Column v1.31</b> Provides users with the ability to define and measure progress toward predefined goals and display current status by using easy-to-understand graphical indicators.
Product Edition	<b>Evaluation</b> Please visit <a href="#">following link</a> for product editions comparison chart.
License Status	<b>No license (You can use product for 3 more day(s))</b> Note: in trial or unlicensed mode all product features are available for evaluation. After trial period license should be purchased which will determine product edition and available feature set. Please visit <a href="#">following link</a> for product editions comparison chart.
License Operations	Farm ID: <input type="text" value="b46ace34-9360-4e30-9406-45837fa4367a"/> <a href="#">Enter License</a> <a href="#">Copy Farm ID to Clipboard</a> <a href="#">Get free trial license</a> <a href="#">Go to purchase page</a>

[Go Back](#)

If product is not licensed you can click "Enter License" link and enter license key (trial or full) into textbox. For upgrading product edition click "Convert License" and enter new license of target product edition.

License Operations	Farm ID: <input type="text" value="b46ace34-9360-4e30-9406-45837fa4367a"/> <a href="#">Enter License</a> <a href="#">Copy Farm ID to Clipboard</a> <a href="#">Get free trial license</a> <a href="#">Go to purchase page</a>
--------------------	--

19E4FCC3F3B6D0E7B4809554C000F09B83BA64C032AE29788E0D98E5EF857C8D460BA717503BD231090F00737038CE18B812D879633BE7980C995DCFA9525B2E8307477DA743F7790E50D326F3D203050FEB63612CF762CB140BCAD09E2A0DA23C83B28F9812865B2D5AB2E5CC57D4ED5B705EB7E8F86ED41852FFCDED5C6340FAD074CC0848887F28EDD1CF74C60F50968C2D35C5683A1901E8D1D955A04FCDDA18ED4F662A91A48E8C71F0CA57CB427823588577B47C2DB412F8C9DC6D9CA11919B13F6D982B7D503981D49C74C8969F6CBFE05CBC76CD52B8473C445B7F1FD29495A914835B2CF12E9139046E87337E5FE2F7841D754D7C26EC9F9D66A

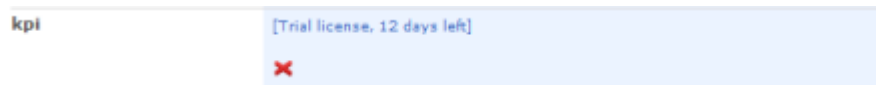
[Activate](#) [Cancel](#)

Pressing "Activate" button will verify the key and in case of verification success license status will be updated.

Product Edition	<b>Standard</b> Please visit <a href="#">following link</a> for product editions comparison chart.
License Status	<b>Full license</b> Note: in trial or unlicensed mode all product features are available for evaluation. After trial period license should be purchased which will determine product edition and available feature set. Please visit <a href="#">following link</a> for product editions comparison chart.

Note: in trial or unlicensed mode **all** product features are available for evaluation. This way you will be able to try each and every feature available in the product line which will give you good understanding of what feature set will be necessary for you and it will be easier to come up with the decision which product edition should be purchased. After trial period expiration full license should be purchased which will determine product edition and available (unlocked) feature set.

Special link informing about product expiration is shown in SharePoint pages, where ArtfulBits component is used if product is using trial license or such license is “Expired” or no license is provided at all. Clicking on this link will redirect to product license status details page.





## Activating / Deactivating Feature

Click "Site Actions" menu in the root site of one site collection, then click "Site Settings":

SharePoint 2007	SharePoint 2010
 <p>The SharePoint 2007 Site Actions menu is shown. It has a 'Create' section with 'Add a new library, list, or web page to this website.' and a 'Site Settings' section with 'Manage site settings on this site.' The 'Site Settings' option is highlighted with a yellow background.</p>	 <p>The SharePoint 2010 Site Actions menu is shown. It includes options like 'New Page', 'New Document Library', 'New Site', 'More Options...', 'View All Site Content', 'Edit in SharePoint Designer', 'Site Permissions', and 'Site Settings'. The 'Site Settings' option at the bottom is highlighted with a red rectangle.</p>

Click "Site collection features" link in Site Settings page:

Site Collection Administration	Site Collection Administration
<ul style="list-style-type: none"><li>Search settings</li><li>Search scopes</li><li>Search keywords</li><li>Recycle bin</li><li><b>Site collection features</b></li><li>Site hierarchy</li><li>Portal site connection</li><li>Site collection audit settings</li><li>Site collection policies</li></ul>	<ul style="list-style-type: none"><li>Search settings</li><li>Search scopes</li><li>Search keywords</li><li>FAST Search keywords</li><li>FAST Search site promotion and demotion</li><li>FAST Search user context</li><li>Recycle bin</li><li><b>Site collection features</b></li><li>Site hierarchy</li><li>Site collection navigation</li><li>Site collection audit settings</li><li>Audit log reports</li><li>Portal site connection</li><li>Site collection policies</li><li>Content type publishing</li><li>Variations</li><li>Variation labels</li><li>Translatable columns</li><li>Variation logs</li><li>Suggested Content Browser Locations</li><li>SharePoint Designer Settings</li><li>Visual Upgrade</li><li>Help settings</li></ul>

In SharePoint Site collection feature list, activate Master Calendar feature (if deactivated).



ArtfulBits MasterCalendar Web Part  
Activate Master Calendar Web Part

Deactivate

Active

## Remarks

Information in this document may be outdated. Please, visit [www.artfulbits.com](http://www.artfulbits.com) for the latest product version.