

Web CAD SDK Reference

Contents

What's new	1
Introduction.....	3
How to run.....	3
How to add the control without design-time	3
How to add design-time control.....	5
How to set SHX fonts	7
How to load file from the server	7
How to switch 3D views	7
Setting the Drawing Lifetime.....	7
Merging without Any Change in Scale	8
Snap and Results of Measurements.....	8
Print.....	9
License	10
Contacts.....	13

What's new

- Different engines

The **DrawingManager.Engine** property has been added. It allows the user to change the type of the used library. You can find it in the **Global.asax.cs** file of the demo.

- Loading drawings via Stream

The **LoadFromStream** method has been added to CADControl. This method requires two parameters:

stream – the Stream itself;

name – the file name to define what you want to load from it.

- Changes in measuring instruments

Now measuring instruments send their results to the callback of the user who can manage it the way he/she wants. In the test example the **showMeasuring** callback displays the results in a separate window. Callback has the following signature:

```
function (dist, area, perimeter, angle, deltaX, deltaY, isShow)
```

dist – result of the distance measuring

area –result of the area measuring

perimeter – result of the perimeter measuring (for the instruments perimeter and area)

deltaX – shift on the X-axis (for the instrument distance)

deltaY – shift on the Y-axis (for the instrument distance)

isShow – true if measuring results are sent. Can be used to control display of the dialog box with measuring results.

Now measuring can be canceled by pressing **Esc** or finished by double-click. The measuring line is saved after double-clicking and the user can see what exactly has been measured. In the test example the window with measuring result also remains active after double-clicking.

- **Print**

Now PDF format is used for printing. At first a PDF document is generated which you can print or save to file for further processing. This way of printing has been chosen due to the fact that the previous way of printing a raster image distorted the drawing size. In the demonstration example print is sent to the callback that opens the preview window.

```
CADControl1.cad.onprint = function (e) {  
    if (e.printUrl)  
        window.open(e.printUrl, '', 'width=600,height=600');  
  
    return false;  
}
```

- **Snaps**

Limited support of snaps has been implemented. Now only anchors to segment ends and circle centers work. They can be switched on or off. In the demonstration example snaps are switched on in the following way:

```
CADControl1.cad.isShowSnap = true;
```

- **Merge**

Now it is possible to embed a drawing into another one without the layout restart with the help of the function

```
cad.merge(File file, string name, point pos, point scale, double rotation)
```

In the demonstration example you can look at the example of its use in

```
<input type="file" id="MergeFile"  
onchange="CADControl1.cad.merge($('#MergeFile')[0].files[0], 'name', {x:5, y:5},  
{x:1,y:1}, 0)" />
```

Introduction

Web CAD SDK is a developer library for viewing CAD formats online.

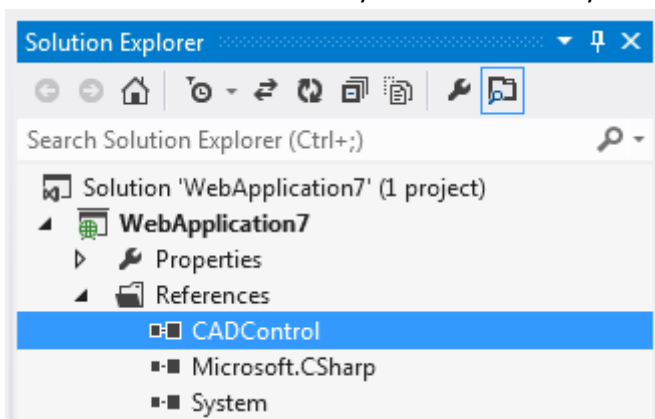
www.sharecad.org portal uses Web CAD SDK.

How to run

1. Unzip the archive.
2. Open **TestWebSite.sln** in your version of MS Studio, for instance: **Demo.VS2012\TestWebSite.sln**
You can use **VS Express for Web** which is free and can be downloaded at: www.microsoft.com
3. If required change the **DrawingManager.Engine** property in the **Global.asax.cs** project file to the required engine.
4. Run the demo. Debug -> Start debugging (F5)

How to add the control without design-time

Add the **CADControl.dll** library as a reference to your web project:



Please note: the control uses CAD.dll for CAD drawings import, so make sure that CADControl.dll and CAD.dll files are located in the same directory if you have selected the following engine: **DrawingManager.Engine = DrawingEngine.CADDLL**

Add the following code to the **.aspx** page where you plan to add the control:

```
<%@ Register Assembly="CADControl" Namespace="WebCAD" TagPrefix="sg" %>
```

After that you can add the control to a page by declaring it directly in the **.aspx** file:

```
<sg:CADControl runat="server" ID="CADControl1" Service="/draw" Height="600px" Width="1200px"></sg:CADControl>
```

Service, one of the required parameters, represents the relative path to the handler that is part of the control and processes its queries.

The handler must be declared in the **Web.config** file of your web project (website):

```
<location path="draw">
  <system.webServer>
    <validation validateIntegratedModeConfiguration="false" />
    <handlers>
      <add name="CADHandler" path="*" verb="*" type="WebCAD.CADHandler" />
    </handlers>
  </system.webServer>
  <system.web>
    <httpHandlers>
      <add path="*" verb="*" type="WebCAD.CADHandler" />
    </httpHandlers>
  </system.web>
</location>
```

Where **path** is the path to your choice.

To load a drawing to the control, you can use the additional **File** parameter as shown below:

```
<sg:CADControl runat="server" ID="CADControl1" Service="/draw" Height="600px" Width="1200px" File="d:\test\cad.dwg"></sg:CADControl>
```

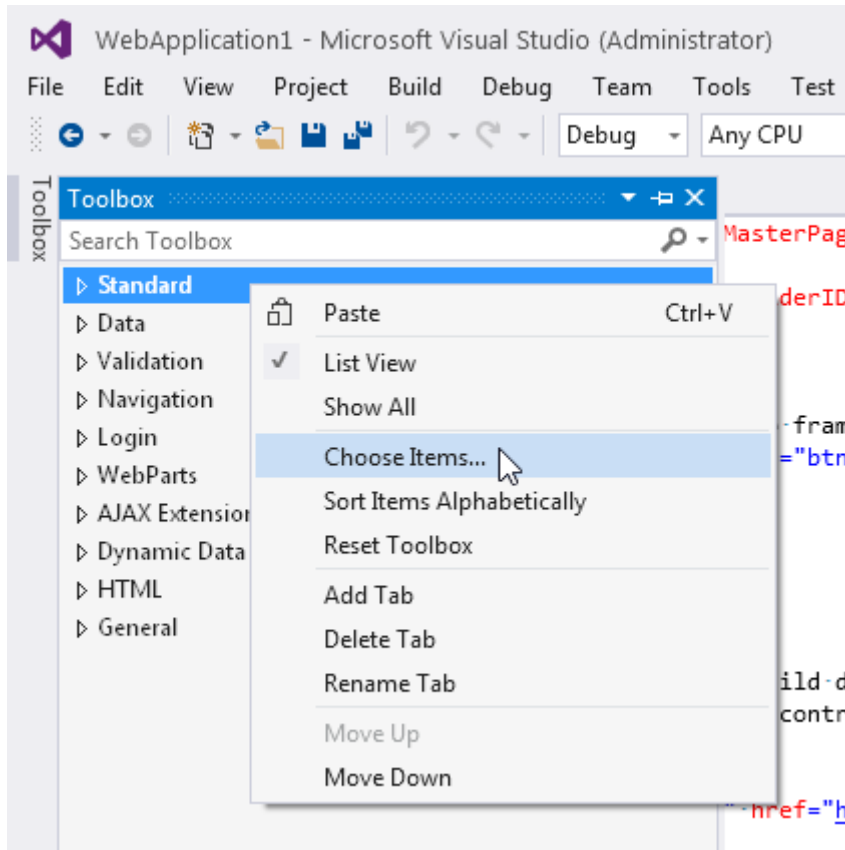
It is also possible to transmit a drawing to the control in code. For example, you can access the control by its name in the **Page_Load** event and specify the **File** property.

The control is at the stage of development and more features will be added. Please let us know if you need any custom enhancements, we will be happy to discuss them and make the control as convenient for you as possible.

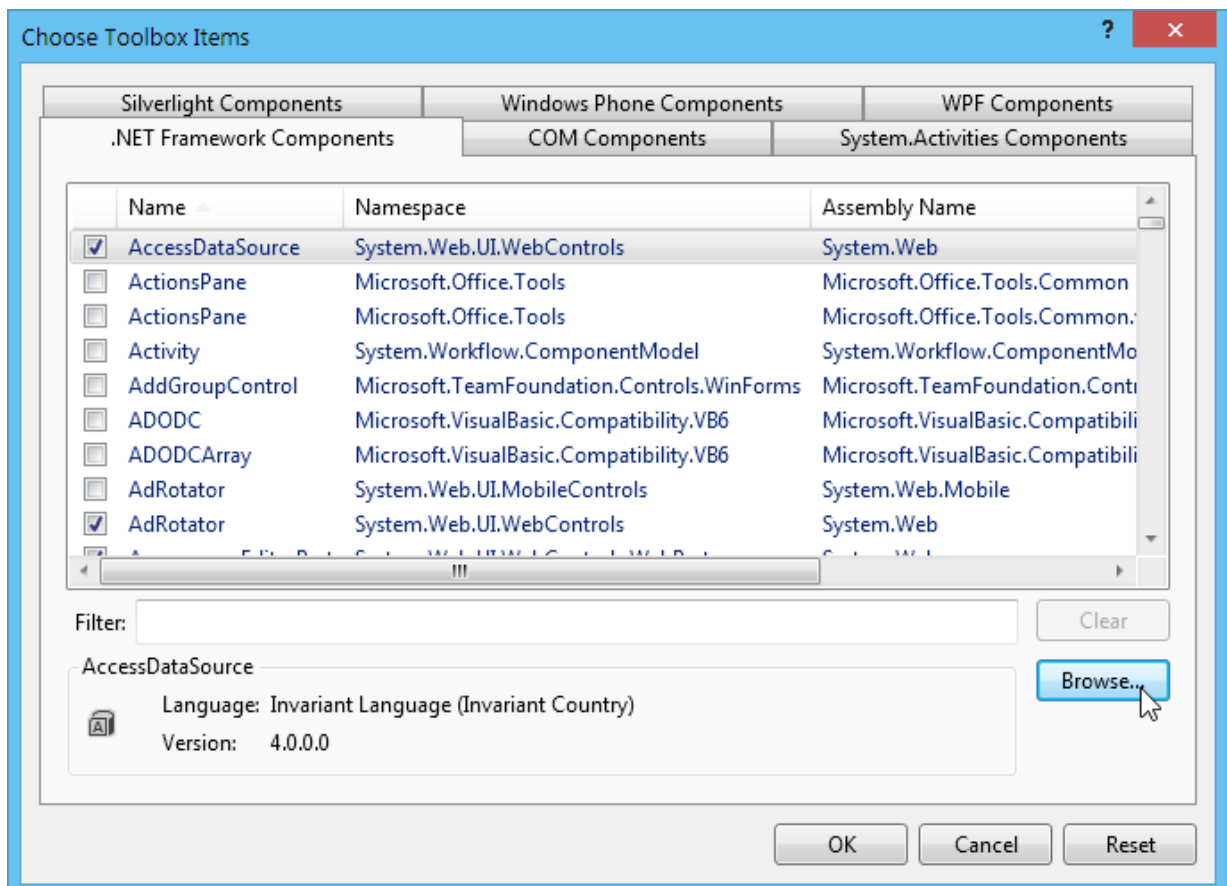
The project works under 32-bit environment. If the following engine is selected **DrawingManager.Engine = DrawingEngine.CADDLL**, then to use the 64-bit environment, please create the **x64** folder within the **bin** folder and place the 64-bit **cad.dll** there.

How to add design-time control

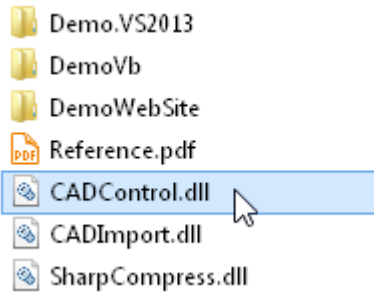
1. Toolbox > Right mouse button> Choose Items >



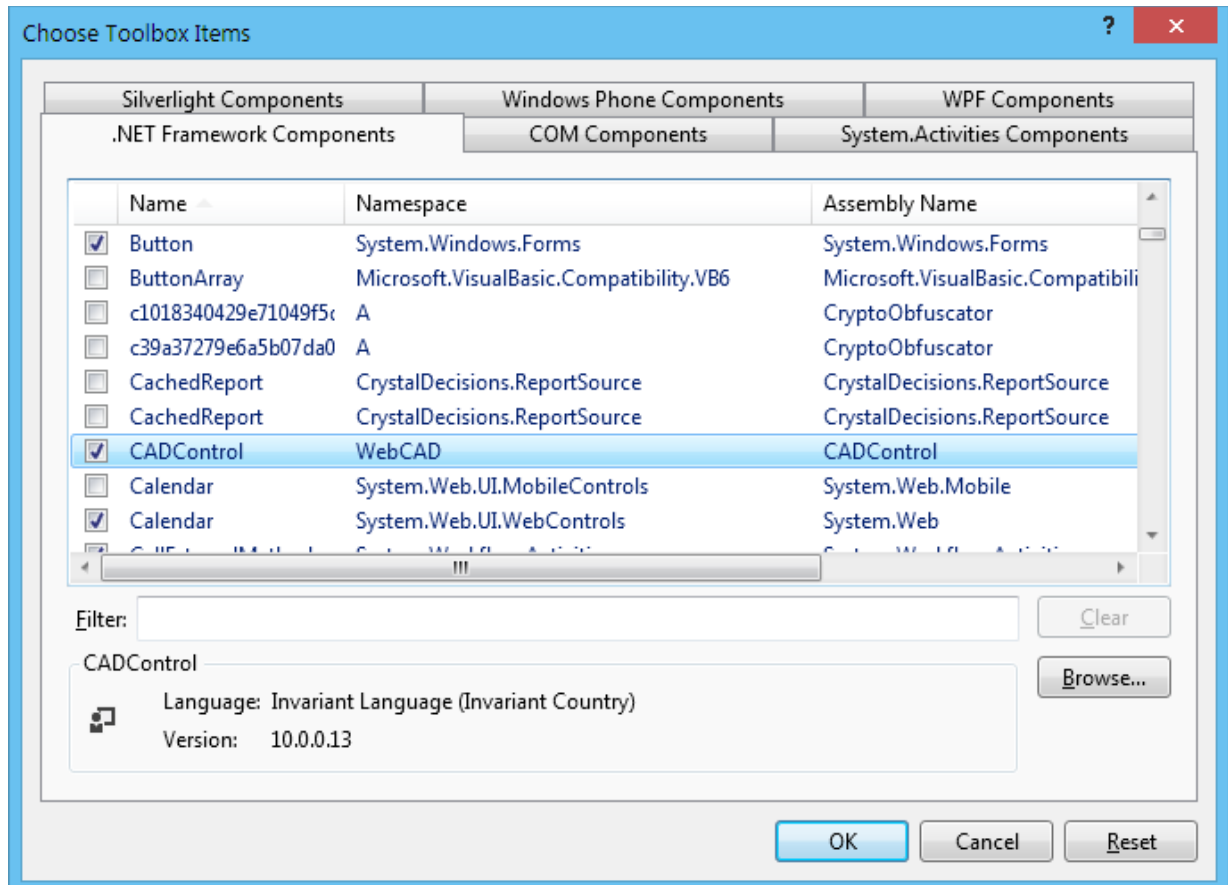
The following dialog should appear:



Press Browse and select **CADControl.dll**

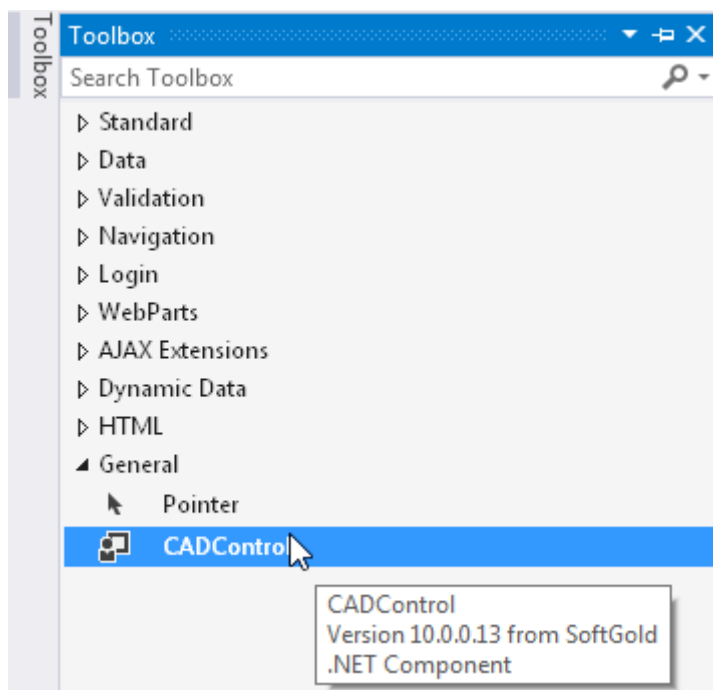


A new item, **CADControl**, should be visible in panel:



Press **OK**.

As a result we see **CADControl** in **Toolbox**:



How to set SHX fonts

To set SHX fonts, use the following properties

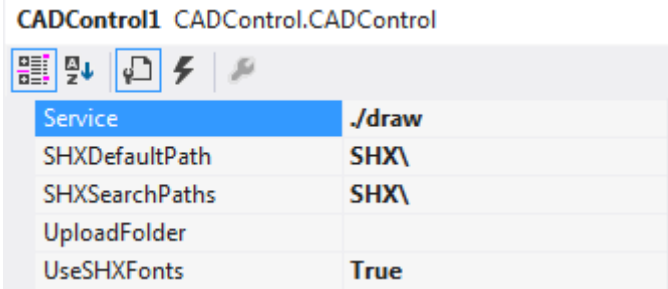
string SHXSearchPaths – is a list of paths separated by “;”. Relative paths are treated relative to the folder App_Data of the website.

string SHXDefaultPath – is the default path

string DefaultSHXFont – is the default font

bool UseSHXFonts – is a checkbox activating SHX fonts usage

In the demo example, fonts are stored in **App_Data\SHX**. **SHXSearchPaths**, **SHXDefaultPath** are specified there. All these properties are available in design time.



The screenshot shows the Visual Studio Properties window for a control named CADControl1. The window title is 'CADControl1 CADControl.CADControl'. Below the title bar are several icons: a list view icon, a zoom icon, a refresh icon, and a help icon. The main area of the window is a table with the following properties and values:

Property	Value
Service	./draw
SHXDefaultPath	SHX\
SHXSearchPaths	SHX\
UploadFolder	
UseSHXFonts	True

How to load file from the server

CADControl allows loading drawings uploaded earlier. The function **saveAsDXF** demonstrates this in the demo example:

```
var saveAsDXF = function () {  
    location.href = cad.service + "/saveasdxf?id=" + CADControl1.cad.guid;  
}
```

How to switch 3D views

To add switching 3D views, you only need to create an array of views names (their order is important) and call the **CADControl1.cad.face.updateVDL** function that initializes the drop-down list for switching 3D views

```
var viewsNames = ["Initial View", "-", "Top View", "Bottom View", "Left View",  
"Right View", "Front View", "Back View", "-", "SW Isometric", "SE Isometric", "NE  
Isometric", "NW Isometric"];  
CADControl1.cad.face.updateVDL("viewsDownlist", viewsNames);
```

You can find this feature in the demo example.

Setting the Drawing Lifetime

You can set the lifetime of a drawing the following way:

First of all, please connect the **CADControl** module

```
using CADControl;
```

After the drawing is loaded, please add the following string:

```
DrawingState ds = DrawingManager.Get(CADControl1.DrawingID);
ds.UnloadTime = 1800000;
ds.DestroyTime = 1800000;
```

Time is defined in milliseconds. **UnloadTime** is the time till the drawing is unloaded from the control, and **DestroyTime** is the time till the link to the drawing in **CADControl** is deleted. It must be higher than **UnloadTime**.

An example of such a setting can be found in **Default.aspx.cs** in `protected void Button1_Click(object sender, EventArgs e)`

Merging without Any Change in Scale

To merge a drawing into another one without reloading the control, use the following method:

```
cad.merge(File file, string name, point pos, point scale, double rotation).
```

Here **file** is a component of the **File JavaScript** class, **name** is a text string, **pos** is an object with margins x and y, the **point** of insertion in the coordinate system, **scale** is an object with margins x and y that represents scale factor along the coordinate axes, **rotation** is a value with the floating point - rotation

Snap and Results of Measurements

Snap is activated by setting the **cad.isShowSnap** property. In the demo example please see

```
CADControl1.cad.isShowSnap = true;
```

To display the results of the measurements, use the callback **cad.measuring.onmeasuring**(dist, area, perimeter, angle, isShow).

dist - the result of measuring distance

area - the result of measuring area

perimeter - the result of measuring perimeter (for the area and perimeter tools)

angle - the result of measuring distance (for the distance tool)

deltaX - shift on the X-axis (for the instrument distance)

deltaY - shift on the Y-axis (for the instrument distance)

isShow - a toggle that shows that the window with the results of the measurements will be displayed (true) or closed (false)

the demo example contains the demo handler:

```
showMeasuring = function (dist, area, perimeter, angle , deltaX, deltaY, isShow)
```

To create user messages before measuring, use the **cad.measuring.onmeasuring** callback. If a false value is returned, the measurement isn't performed. In the demo example, please refer to

```
CADControl1.cad.measuring.onmeasuring = function (e) {
    if (confirm('Are you sure?')) {
        return true;
    }
    return false;
}
```


Now measuring can be canceled by pressing **Esc** or finished by double-click. The measuring line is saved after double-clicking and the user can see what exactly has been measured. In the test example the window with measuring result also remains active after double-clicking.

Print

Now PDF format is used for printing. At first a PDF document is generated which you can print or save to file for further processing. This way of printing has been chosen due to the fact that the previous way of printing a raster image distorted the drawing size. In the demonstration example print is sent to the callback that opens the preview window.

```
CADControl1.cad.onprint = function (e) {  
    if (e.printUrl)  
        window.open(e.printUrl, '', 'width=600,height=600');  
  
    return false;  
}
```

License

Web CAD SDK License Agreement and Limited Warranty

This Soft Gold License Agreement ("LICENSE AGREEMENT") is a legal agreement between you (either individual or an entity) and Soft Gold Limited ("SOFT GOLD") for Web CAD SDK Software ("SOFTWARE"). By installing, copying, accessing, or otherwise using the SOFTWARE, you agree to be bound by the terms of this LICENSE AGREEMENT. If you do not agree to the terms of this LICENSE AGREEMENT, you must cease using the SOFTWARE immediately.

1. OWNERSHIP

All copyrights to SOFTWARE and everything that comes with it are exclusively owned by the author - SOFT GOLD (CADSoftTools trademark)

This SOFTWARE is protected by copyright laws and international copyright treaties. At all times SOFT GOLD retains full title to the SOFTWARE. Subject to your acceptance of and accordance with the terms and conditions stated in this LICENSE AGREEMENT, you shall be granted a SOFTWARE license. Any previous agreement with SOFT GOLD is superseded by this LICENSE AGREEMENT.

2. UNREGISTERED VERSION

You may distribute the unregistered version of SOFTWARE freely, provided that all files are included and remain unmodified and that no extra files have been added to the package. You may not ask any money for the distribution. You may use the unregistered version of SOFTWARE free of charge for testing purposes, but if you want to use it for other purposes than testing - you have to register it with the author.

The unregistered version have some restrictions: Nagscreen, demo text when saving, copying and printing images.

3. GRANT OF LICENSE AND SCOPE OF USE

3.1. Grant of license.

Subject to the terms and conditions of this License, SOFT GOLD grants to you, if you are an individual, or, if you are an entity, one (1) designated person in your organization ("Named Developer") a personal, nonexclusive, and limited license to use the SOFTWARE solely to create your own application programs and other works ("Works"). You may install the SOFTWARE on a reasonable number of machines provided that the Named Developer is the only individual permitted to use the SOFTWARE. Subject to

the other terms and conditions of this License, you may distribute your Works to others for production use. SOFT GOLD reserves the right to refuse granting a license without reasons explanation. All rights not specifically granted to you herein are retained by SOFT GOLD.

3.2 Multiple Licensed Copies.

You may purchase from SOFT GOLD or its authorized reseller additional licenses to permit multiple Named Developers to use the SOFTWARE (each, a "Named Developer License"). Such rights will be effective only when granted in writing by SOFT GOLD or its authorized reseller and are conditioned upon your payment of the applicable fees. If you purchase additional Named Developer Licenses for the SOFTWARE then you are granted for each Named Developer License the personal, nonexclusive, nontransferable and limited license to designate one individual in your organization as the Named Developer and permit such Named Developer to install and use the SOFTWARE solely as permitted under Section 3.1. In such case, the SOFTWARE may be used exclusively by the specifically designated Named Developer, subject to all the terms and conditions of this License. You agree that you will not designate more Named Developers than the number of Named Developer Licenses that SOFT GOLD or its authorized reseller has expressly granted to you and you will not allow the SOFTWARE to be used by any individuals other than the Named Developers designated by you from time to time. You agree to maintain accurate records of the Named Developer designated by you to use the SOFTWARE under each Named Developer License you hold.

3.3 Server licenses

Subject to the terms and conditions of this License, SOFT GOLD grants to you, if you are an entity ("Licensee") a personal, nonexclusive and limited license, which allows to install and use the SOFTWARE on one (1) server or Web-server without end-users royalties. You may also make a reasonable number of copies of the SOFTWARE to backup devices such as hard disks, optical media, or tape and one (1) physical CD media backup copy of the SOFTWARE solely to replace the original copy provided to you if the original copy is damaged or destroyed. SOFT GOLD reserves the right to refuse granting a license without explanation of reasons. All rights not specifically granted to you herein are retained by SOFT GOLD.

The SOFTWARE may be used by all employees of Licensee at facilities governed by Licensee in connection with the server or Web-server. Licensee must use commercially reasonable efforts to restrict network or any other access to the SOFTWARE by anyone outside of Licensee's facilities who is not authorized to use the SOFTWARE.

3.4 Special licenses

If necessary Soft Gold Ltd is entitled to grant you a special license which conditions are preliminarily discussed by the parties and don't contradict conditions of standard license.

4.DISCLAIMER OF WARRANTY

THIS SOFTWARE AND THE ACCOMPANYING FILES ARE SOLD "AS IS" AND WITHOUT WARRANTIES AS TO PERFORMANCE OF MERCHANTABILITY OR ANY OTHER WARRANTIES WHETHER EXPRESSED OR IMPLIED. BECAUSE OF THE VARIOUS HARDWARE AND SOFTWARE ENVIRONMENTS INTO WHICH SOFTWARE MAY BE PUT, NO WARRANTY OF FITNESS FOR A PARTICULAR PURPOSE IS OFFERED. YOU ASSUME THE WHOLE RISK CONCERNING QUALITY AND WORK OF SOFTWARE. IF THE SOFTWARE PROVES TO BE DEFECTIVE YOU ASSUME COST OF ALL NECESSARY SERVICING, REPAIR OR CORRECTION.

Good data processing procedure dictates that any program be thoroughly tested with non-critical data before relying on it. The user must assume the entire risk of using the program.

You may not alter this software in any way, including changing or removing any windows.

5.AGREEMENT PERTAINING TO THE RELEASE OF SOURCE CODE

5.1 Recipient WILL NOT distribute the source. Particularly this includes such files as .dcl, .dfm, .pas and others which SOFTWARE has provided.

5.2 SOFT GOLD reserves the right to change any part of the source in future versions of the product. These changes may include removal of classes, properties and methods or creation of new classes, properties and methods.

6. ENGAGING IN ANY OF THE ACTIVITIES LISTED BELOW WILL TERMINATE THE SOFTWARE LICENSE. IN ADDITION TO SOFTWARE LICENSE TERMINATION, SOFTWARE MAY PURSUE CRIMINAL, CIVIL, OR ANY OTHER AVAILABLE REMEDIES.

6.1. Removal of proprietary notices, labels or marks from the SOFTWARE or SOFTWARE Documentation.

6.2. Utilize the SOFTWARE for the creation of products (whether it be freeware, shareware or a commercial product) which competes directly or indirectly with software published at www.cadsofttools.com, www.cadsofttools.ru, www.cadsofttools.de

6.3. Disclose the SOFTWARE to any person or party, involved in the creation of products which competes directly or indirectly with software published at www.cadsofttools.com.

6.4. Violation of the section 5 of this LICENSE AGREEMENT

7. LIMITATIONS OF DAMAGES

SOFT GOLD LTD SHALL NOT BE LIABLE FOR ANY INDIRECT, SPECIAL, INCIDENTAL OR CONSEQUENTIAL DAMAGES (INCLUDING DAMAGES FOR LOSS OF BUSINESS, LOSS OF PROFITS, OR THE LIKE), WHETHER BASED ON BREACH OF CONTRACT, TORT (INCLUDING NEGLIGENCE), PRODUCT LIABILITY OR OTHERWISE, EVEN IF SOFT GOLD LTD OR ITS REPRESENTATIVES HAVE BEEN ADVISED OF THE POSSIBILITY OF SUCH DAMAGES AND EVEN IF A REMEDY SET FORTH HEREIN IS FOUND TO HAVE FAILED OF ITS ESSENTIAL PURPOSE.

Thank you for using Web CAD SDK!

Soft Gold Ltd., 2014

Contacts

<http://www.cadsofttools.com>
www.sharecad.org
info@cadsofttools.com

USA / Canada Toll Free: +1 (800) 469 9789
German Toll Free: +49 (0)800 181 9876
French Toll Free: +33 (0)800 915939