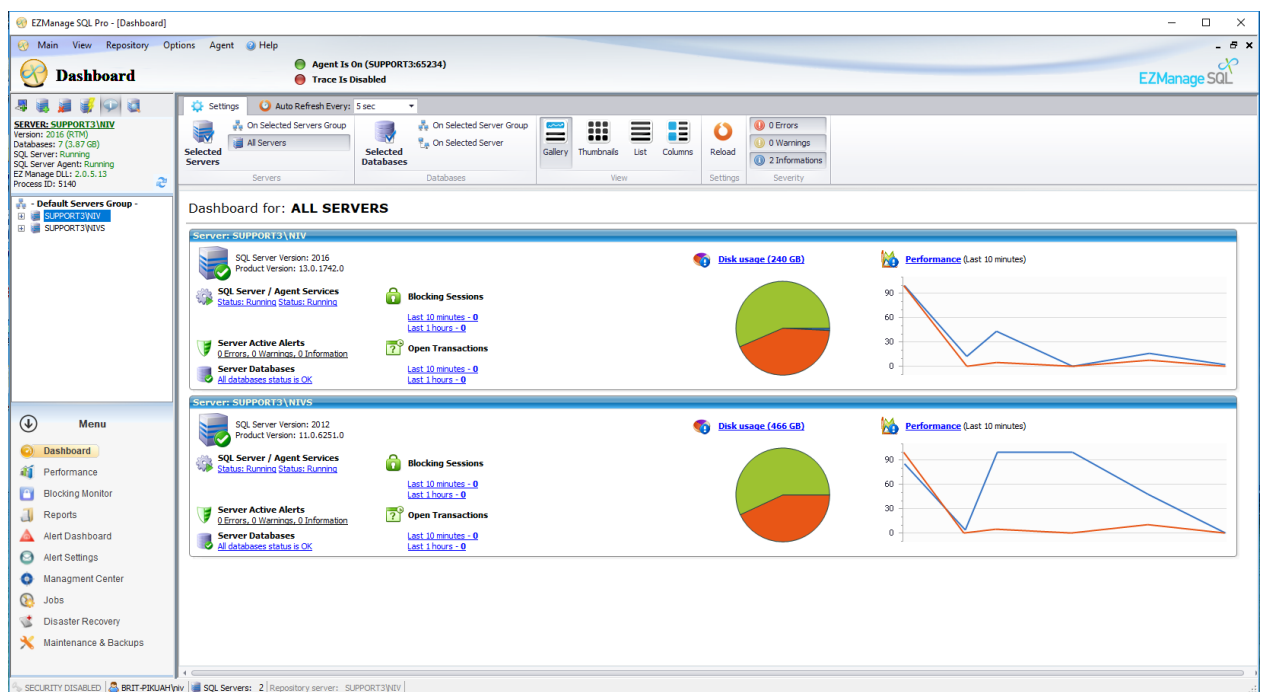


# EZManage SQL

## Quick guide for installation and implementation



The purpose of this document is to guide you through the process of implementing EZManage SQL using SQL Server Databases. EZManage SQL is a powerful agentless centralized management tool for the optimal performance of Microsoft SQL Servers.

Copyright 2018 Experda. All rights reserved. All trademarks, trade names, service marks and logos referenced herein belong to their respective companies.

For further information and support, please contact us at [support@dbasrv.com](mailto:support@dbasrv.com)

## Table of Contents

<b>1 About EZManage SQL .....</b>	<b>3</b>
<b>2 Installation .....</b>	<b>4</b>
<b>3 Define Server and Database Notification Settings .....</b>	<b>6</b>
<b>4 Define Database Backups, Maintenance and Optimization Rules .....</b>	<b>7</b>
<b>5 Fast Implementation Suites and Settings .....</b>	<b>8</b>
<b>5 Disaster Recovery Settings .....</b>	<b>9</b>
5.1 Setting up a Disaster Recovery Rule .....	9
5.2 In case of an emergency (Disaster Recovery procedure needed) .....	10
<b>6 DBA Tools .....</b>	<b>11</b>
6.1 Scheduled Operations panel .....	11
Management Center panel .....	12
6.2 Multi-Servers Scripting panel .....	13
<b>7 Performance and Blocking Monitor .....</b>	<b>14</b>
<b>8 Automatic DBA Reports .....</b>	<b>16</b>
<b>9 EZManage SQL Global Settings .....</b>	<b>17</b>

\*For detailed information, refer to the "Help File" on the software Help menu

### 1) About EZManage SQL

EZManage SQL is an affordable, easy-to-use database management solution for Microsoft™ SQL Server databases. Providing comprehensive maintenance, backups, monitoring and DRP from one centralized console, as well as an advanced performance monitoring and blocking analysis in real time and historic. EZManage SQL automates traditional DBA tasks such as monitoring, re-indexing, backup & restore, to improve SQL Server performance, minimize downtime and reduce costs.



The EZManage SQL is a real "All-in-One" solution, allowing anyone with or without a technical background to effectively manage their SQL Server environment.

With EZManage SQL you enjoy enhanced performance, business continuance, high availability, a dramatic decline in overhead and fewer failures, all of which will reduce your overall IT costs and guarantee you a speedy ROI and peace of mind.

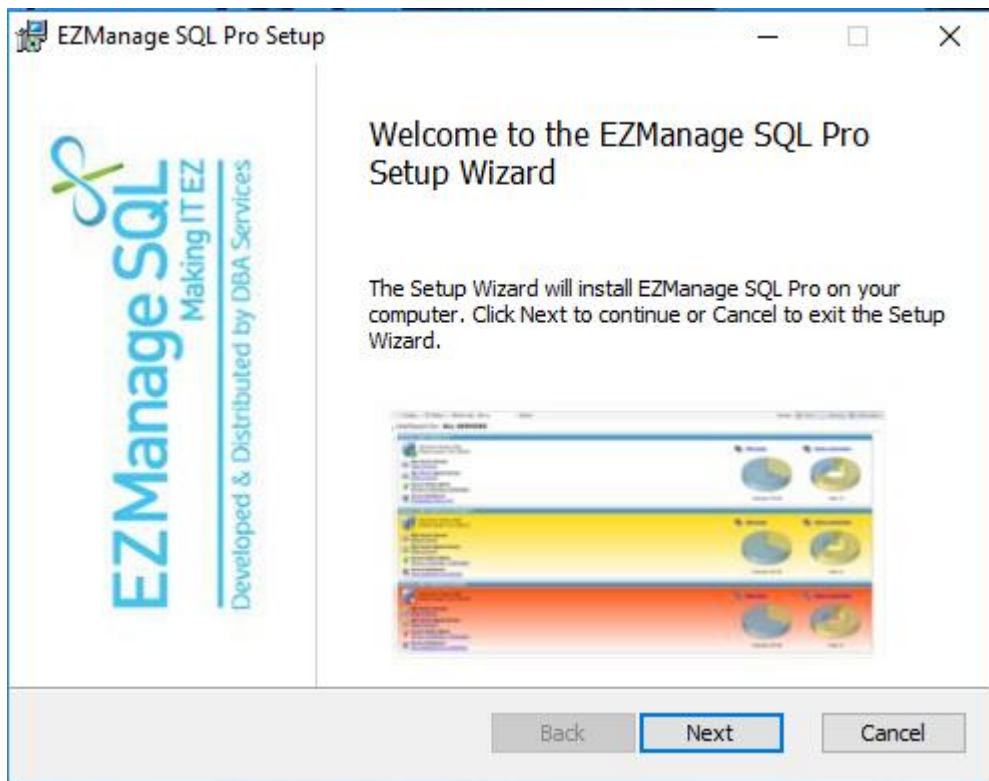
## **The Benefits for EZManage SQL Users**

### **EZManage SQL helps businesses in a number of ways, including:**

- Central Management of Multiple SQL Servers
- Advanced Backups and Restore.
- Built-in Disaster Recovery
- Real time and historic performance monitoring
- 24/7 Monitoring and Alerts
- Automatic maintenance and optimization rules

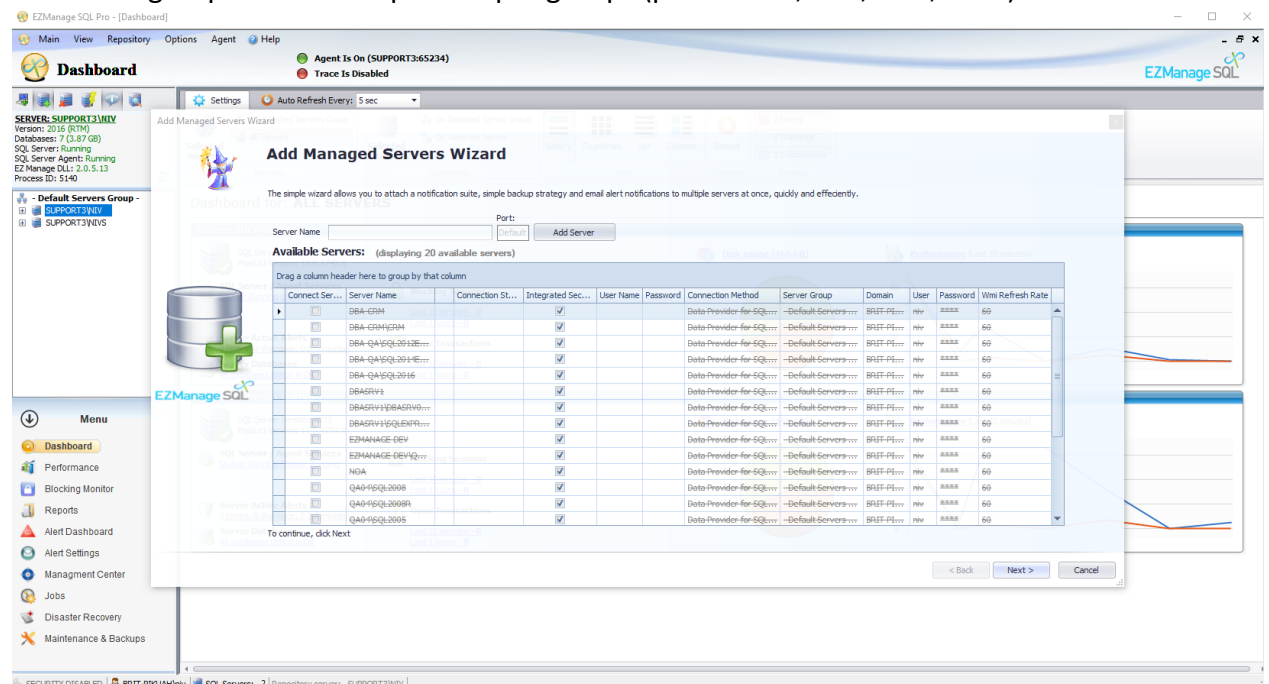
**EZManage SQL is a Microsoft VeriTest approved software and SAP software solution and technology partner worldwide.**

## 2) Installation



Once the Setup Wizard installation is complete, use the "ADD SQL SERVER" in order to broadcast the network and select the servers you want to manage.

The server selected will be shown on the left side in a "TREE", which now can divide them into groups and attach policies per groups (production, test, DRP, QA...).



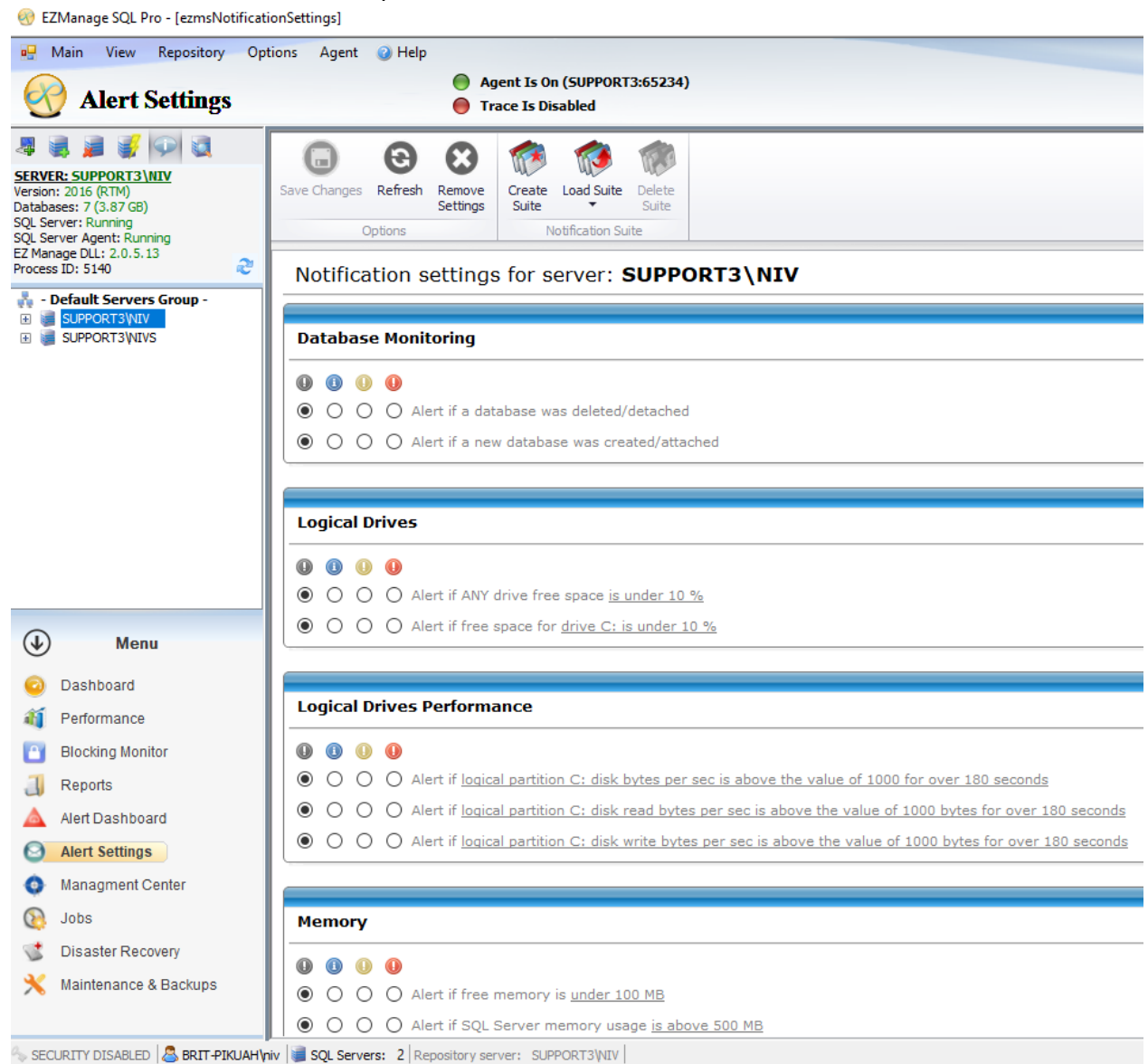
**Important: You can connect to the SQL server by Windows Authentication or by the local SQL user authentication.**

Mark the (Use integrated security) checkbox to use Windows Authentication.

### 3) Define Server and Database Alert Settings

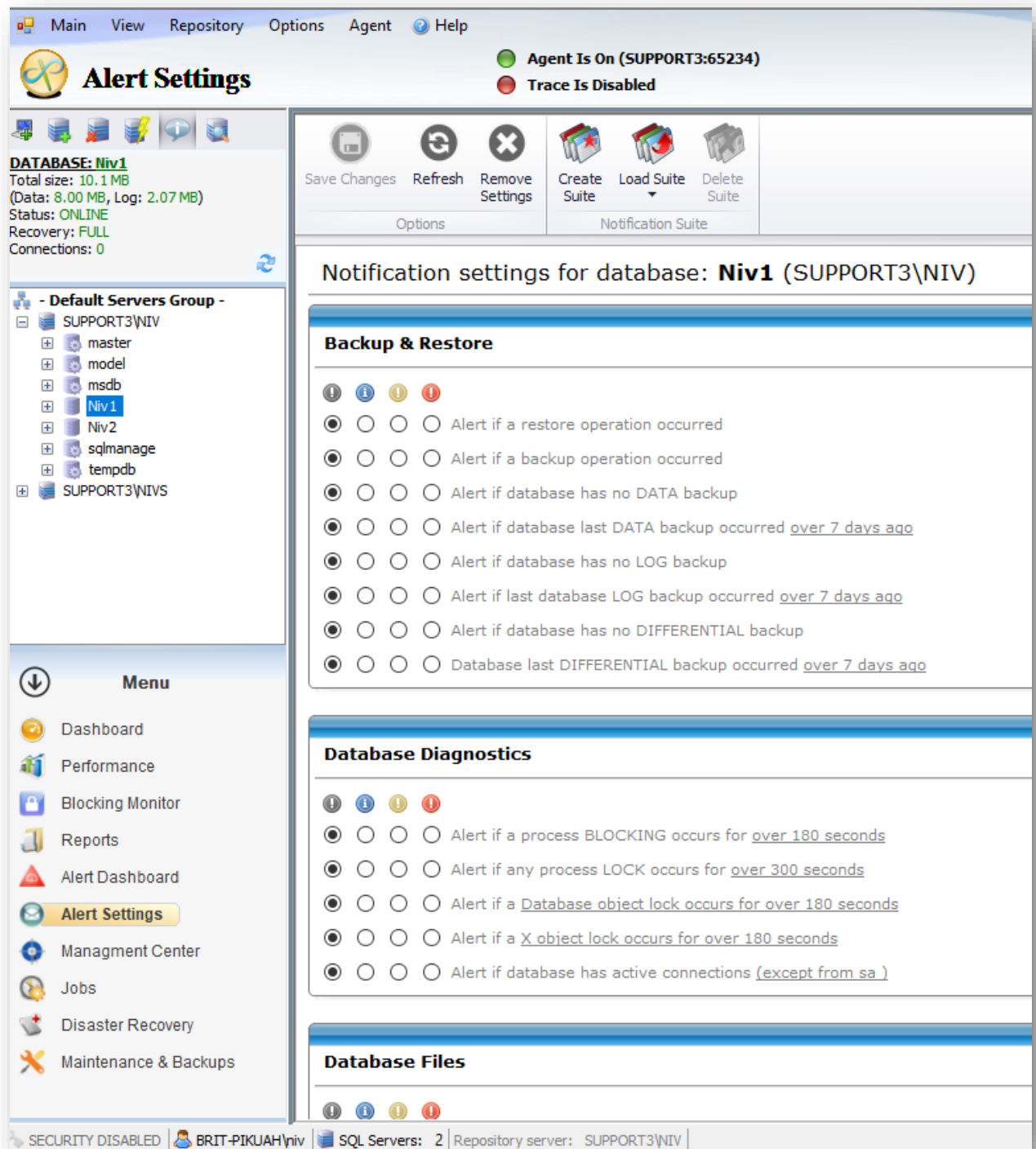
Alert Settings module allows users to create server and database notifications from the Notification Settings module.

Select a server to create server policies:



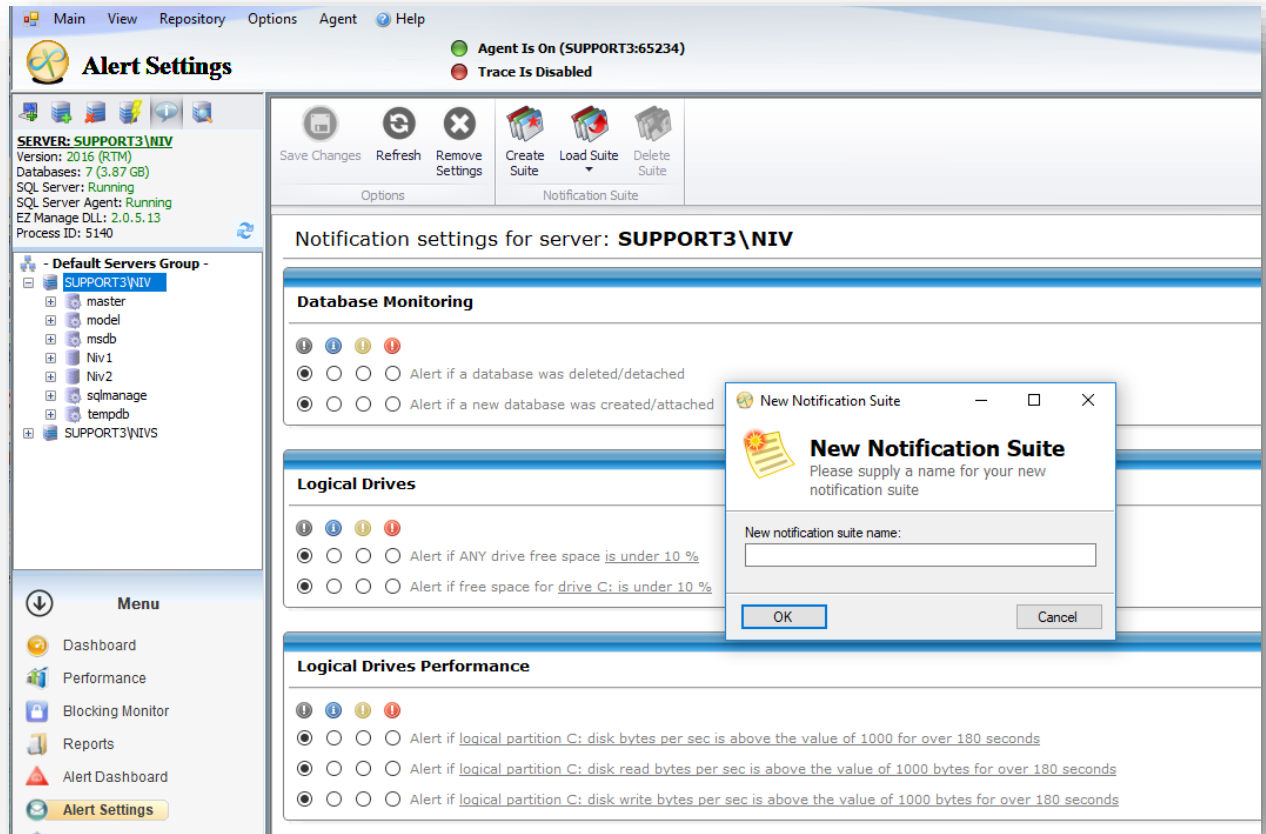
The screenshot displays the EZManageSQL Pro - [ezmsNotificationSettings] application window. The interface includes a menu on the left with options like Dashboard, Performance, Blocking Monitor, Reports, Alert Dashboard, Alert Settings (highlighted), Management Center, Jobs, Disaster Recovery, and Maintenance & Backups. The main area shows the 'Alert Settings' module for server 'SUPPORT3\NIV'. It features a status bar at the top indicating 'Agent Is On (SUPPORT3:65234)' and 'Trace Is Disabled'. Below this, there are buttons for 'Save Changes', 'Refresh', 'Remove Settings', 'Create Suite', 'Load Suite', and 'Delete Suite'. The main content area is titled 'Notification settings for server: SUPPORT3\NIV' and contains several sections for configuring alerts: 'Database Monitoring', 'Logical Drives', 'Logical Drives Performance', and 'Memory'. Each section has a set of radio buttons and checkboxes to enable or disable specific alert conditions. For example, in 'Database Monitoring', there are options to alert if a database was deleted/detached or if a new database was created/attached. In 'Logical Drives', there are options to alert if ANY drive free space is under 10% or if free space for drive C: is under 10%. In 'Logical Drives Performance', there are options to alert if logical partition C: disk bytes per sec is above the value of 1000 for over 180 seconds, or if disk read bytes per sec is above the value of 1000 bytes for over 180 seconds, or if disk write bytes per sec is above the value of 1000 bytes for over 180 seconds. In 'Memory', there are options to alert if free memory is under 100 MB or if SQL Server memory usage is above 500 MB. The bottom status bar shows 'SECURITY DISABLED', 'BRIT-PIKUAH\NIV', 'SQL Servers: 2', and 'Repository server: SUPPORT3\NIV'.

Or select a database to create database policies:



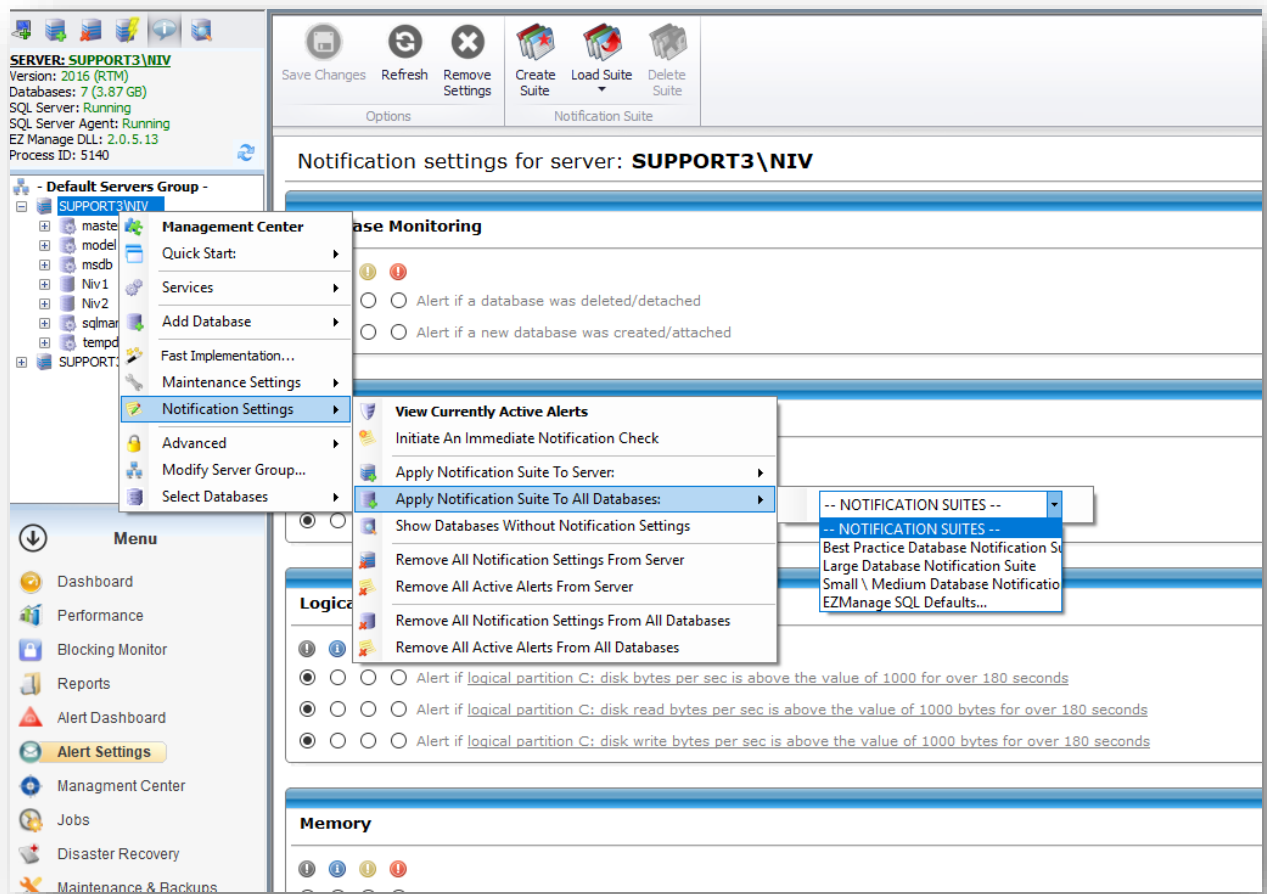
The selected severity of each notification (disable, information, warning and error) will define the dashboard color when an alert is activated.

Once the rules are selected, choose the Notification Suite button in the top right corner -> Save Current Settings As -> and choose a name for the Notification suite.



After creating the database and server Notification Policies, you can apply them into multiple servers in a single action:

Choose multiple servers or server groups -> Right click -> Notification Settings



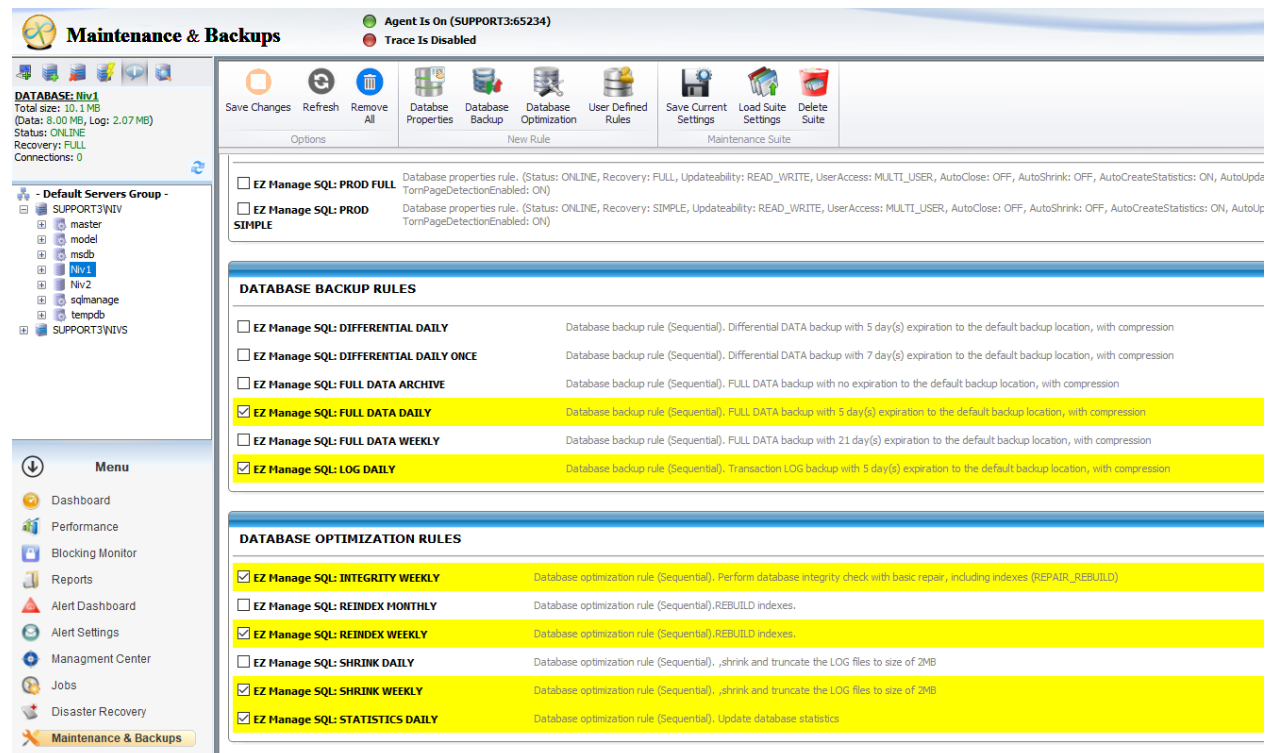
You can also perform this using the "Fast Implementation" (see "Fast Implementation" chapter).

#### 4) Database Backups, Maintenance and Optimization Rules

The Maintenance module allows users to define Backup, Maintenance and Optimization jobs, which will run automatically at the schedule selected.



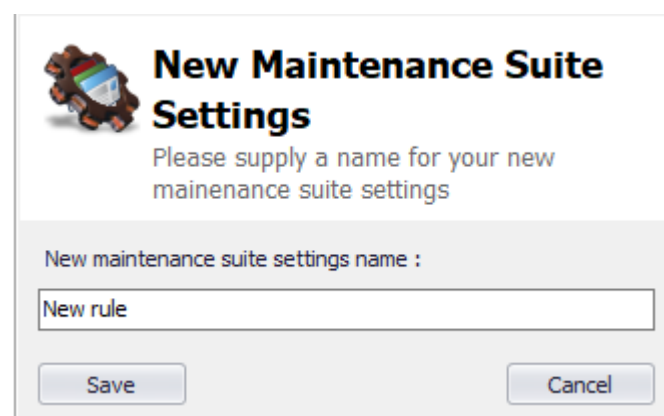
First you need to select a database.



In order to define a new Maintenance Suite, first choose the desired rules by:

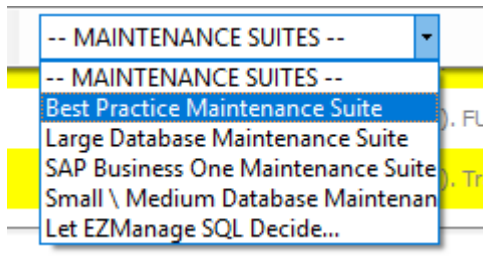
- Selecting the check box of the desired rules
- Edit the rules using the buttons on the right side
- You can also create a new rule using the button "Create a New Rule".

After you finish, write the new rule name in the text box -> choose "Maintenance Suite" button -> Save Current Settings.



Alternatively, you can choose the option "Best Practice Maintenance Suite"

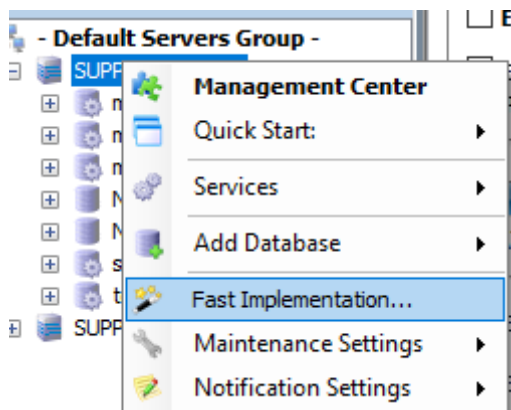
(Microsoft experts' recommendations), for a tailor made maintenance suite.



## 5) Fast Implementation Suites and Settings

Once finished creating "Maintenance Suites" and "Notification Suites", you can apply them all on multiple servers simultaneously.

Simply select all the desired servers or a group of servers -> right click-> fast implementation.

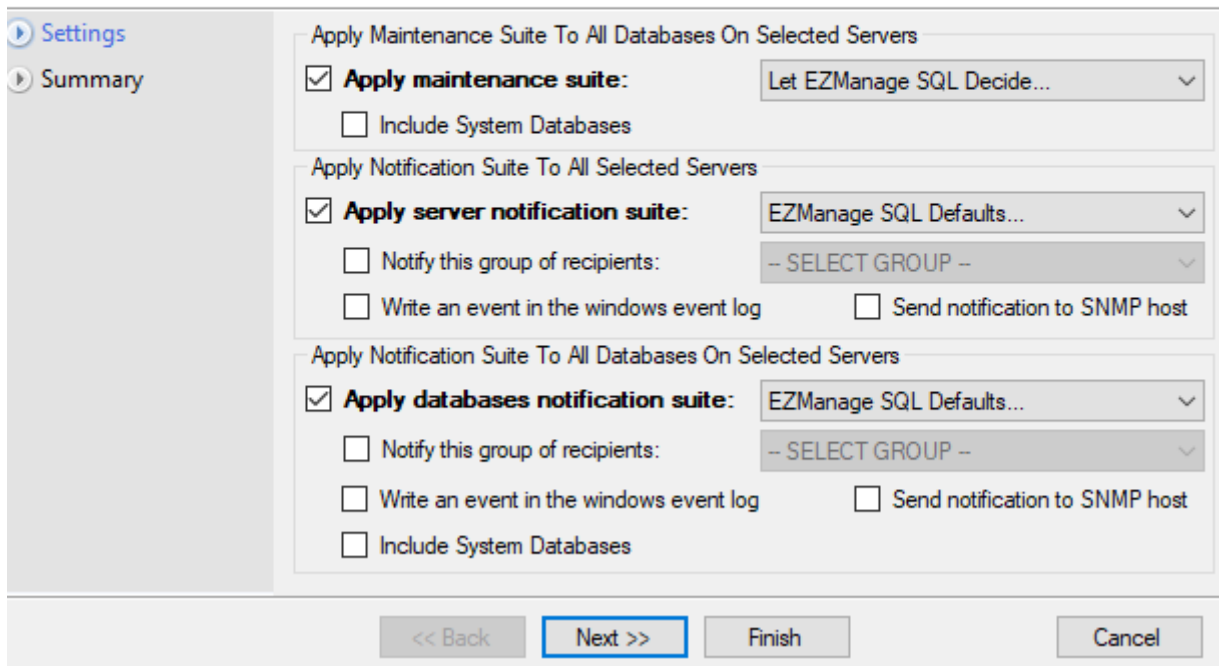


Apply the suites to the selected servers and databases, and click 'finish'.



## Fast Implementation

Settings (step 1 of 2)



**Settings**

**Summary**

**Apply Maintenance Suite To All Databases On Selected Servers**

☒ **Apply maintenance suite:** Let EZManage SQL Decide...

☐ Include System Databases

**Apply Notification Suite To All Selected Servers**

☒ **Apply server notification suite:** EZManage SQL Defaults...

☐ Notify this group of recipients: -- SELECT GROUP --

☐ Write an event in the windows event log ☐ Send notification to SNMP host

**Apply Notification Suite To All Databases On Selected Servers**

☒ **Apply databases notification suite:** EZManage SQL Defaults...

☐ Notify this group of recipients: -- SELECT GROUP --

☐ Write an event in the windows event log ☐ Send notification to SNMP host

☐ Include System Databases

<< Back **Next >>** Finish Cancel

### 5.1) Setting up a Disaster Recovery Rule

EZManage SQL provides you with an easy way to setup a complete Disaster Recovery solution, using a step-by-step wizard, which allows you to customize your settings to achieve the optimal and most suitable flow for your needs.

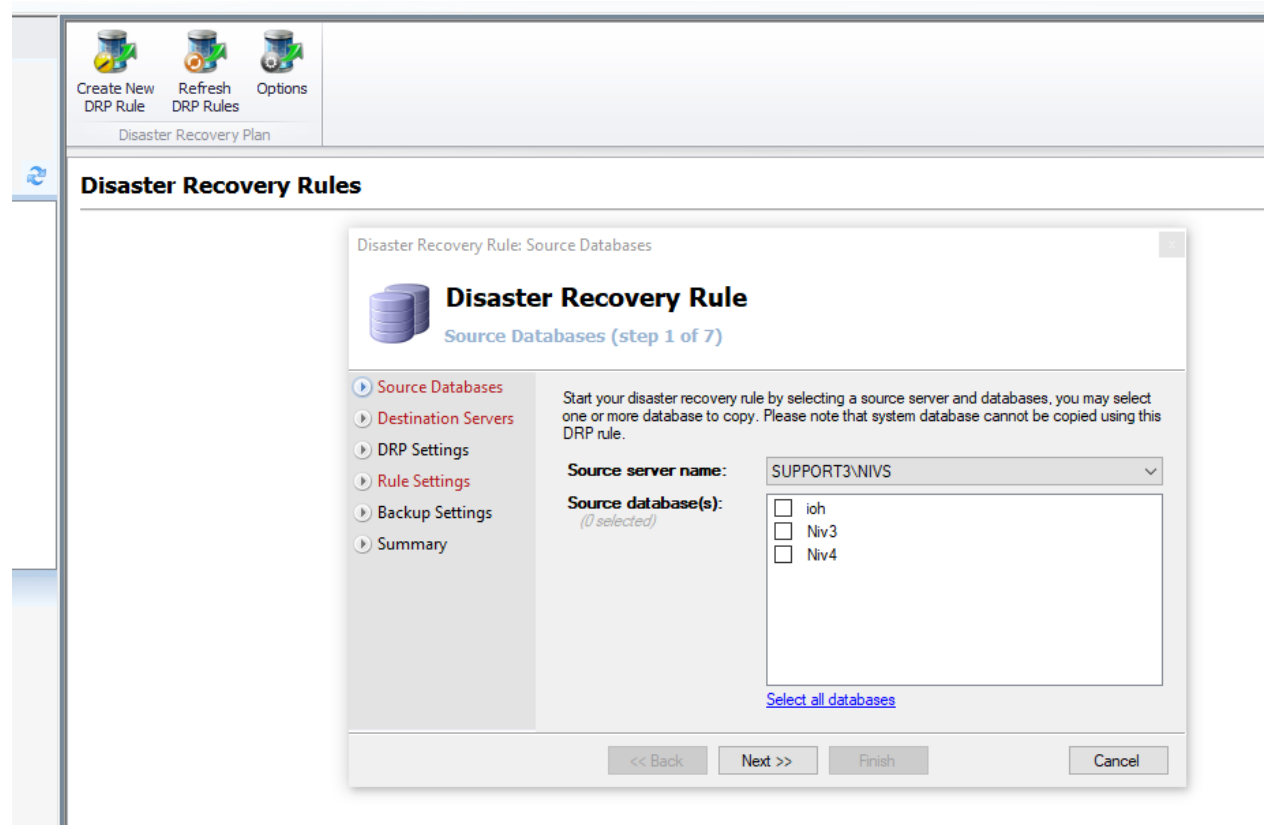
When setting a DR Rule, note the following items:

- The source database backup files should be placed in a location that is accessible from the destination server (It means that the SQL server and agent services are running with a user that has permissions for the backup folder of the source server).
- When the destination database is restored it is kept in a “STANDBY” (read only) mode and is accessible for user queries.
- The destination database is kept in a “READ\_ONLY” or “STANDBY” mode to assure that it is an exact copy of the source database upon restore.
- When setting a DR Rule with different versions of SQL server based on transaction log or differential data, the destination database is kept in a “RESTORING” mode and is not accessible for user queries until it is brought

online (Bringing the destination DB online is only for the sake of reading information).

**Important: Before defining a DRP Rule, make sure that the desired database has a backup rule made by the EZManage SQL software (Data backup and Log backup).**

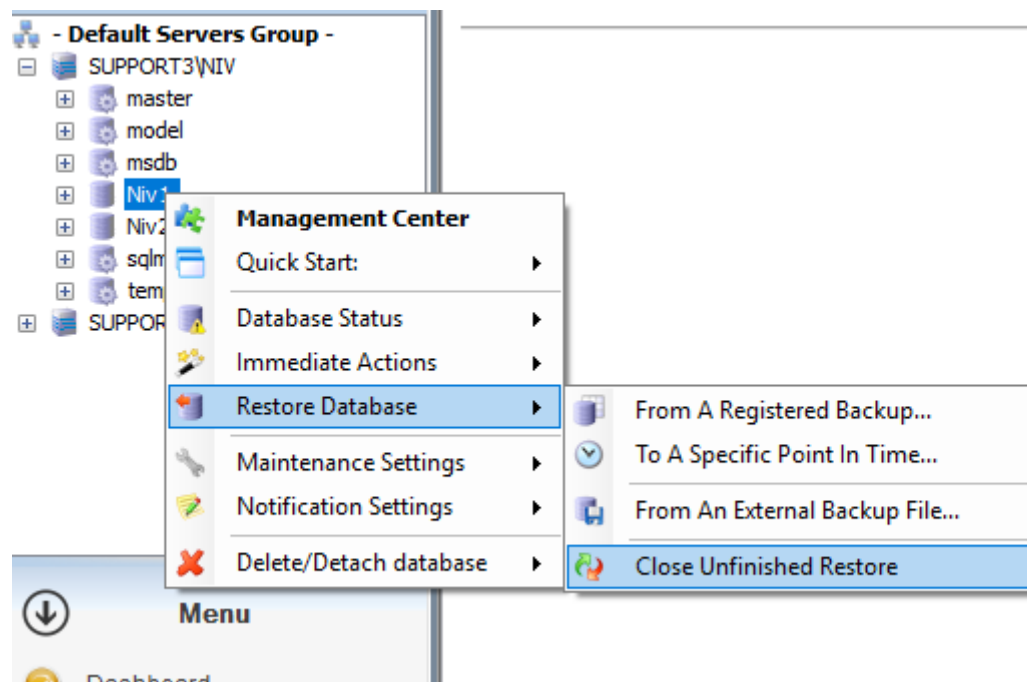
Select "Create New DRP Rule" at the top of the DRP menu and the wizard will guide you to define the rule simply and efficiently.



The screenshot shows the 'Disaster Recovery Rules' window in EZManageSQL. At the top, there are three buttons: 'Create New DRP Rule', 'Refresh DRP Rules', and 'Options'. Below them is a 'Disaster Recovery Plan' section. The main area is titled 'Disaster Recovery Rules' and contains a wizard for creating a 'Disaster Recovery Rule'. The wizard is currently on 'Step 1 of 7: Source Databases'. The left sidebar lists the steps: 'Source Databases' (selected), 'Destination Servers', 'DRP Settings', 'Rule Settings', 'Backup Settings', and 'Summary'. The main content area for 'Source Databases' includes a title 'Disaster Recovery Rule: Source Databases', a sub-title 'Source Databases (step 1 of 7)', and a description: 'Start your disaster recovery rule by selecting a source server and databases, you may select one or more database to copy. Please note that system database cannot be copied using this DRP rule.' Below this, there is a 'Source server name:' dropdown menu set to 'SUPPORT3\NIVS'. Under 'Source database(s): (0 selected)', there are three checkboxes: 'ioh', 'Niv3', and 'Niv4'. A link 'Select all databases' is at the bottom right of the list. At the very bottom of the wizard, there are four buttons: '<< Back', 'Next >>', 'Finish', and 'Cancel'.

## 5.2) In case of an emergency (Disaster Recovery procedure is needed)

Right click on the destination database -> Restore Database -> Close unfinished restore. The destination database is then accessible for any user queries.



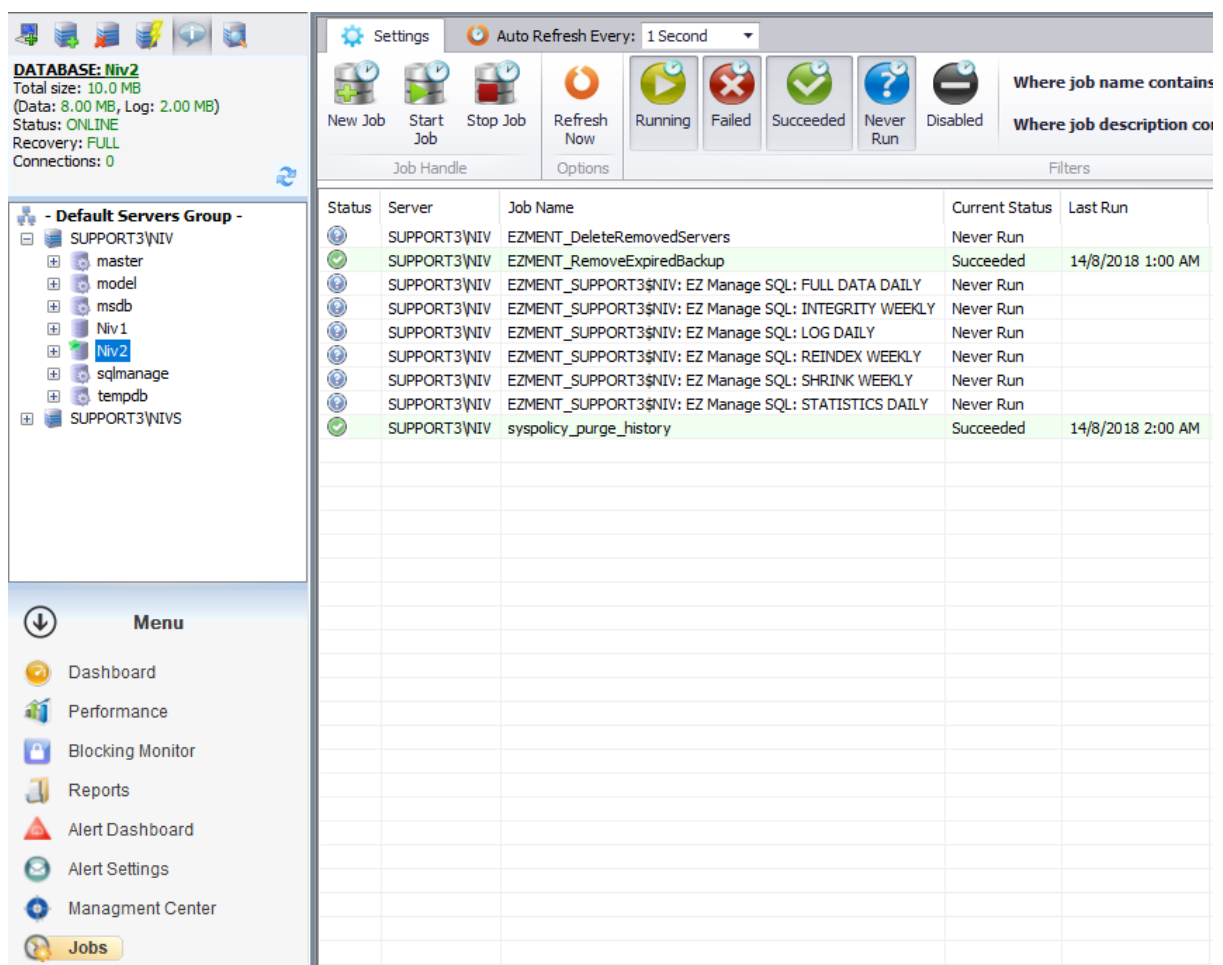
\*The failover procedure completion is not performed automatically by the system because it is a sensitive situation which needs to be performed under human control.

6

## .1) Jobs

The Jobs module provides you with a powerful single-glance view of all jobs that were created and are running on all servers simultaneously. The centralized job view helps you view all issues instantly and prioritize your work. A user can also filter jobs to view only relevant jobs (failed, running, succeeded...) and take action

To view the jobs, choose the desire server or servers in the server tree on the left side.



**Database Information:**  
**DATABASE: Niv2**  
 Total size: 10.0 MB  
 (Data: 8.00 MB, Log: 2.00 MB)  
 Status: **ONLINE**  
 Recovery: **FULL**  
 Connections: 0

**Server Tree:**  
 - Default Servers Group -  
 - SUPPORT3\NIV  
 - master  
 - model  
 - msdb  
 - Niv1  
 - Niv2  
 - sqlmanage  
 - tempdb  
 - SUPPORT3\NIVS

**Menu:**  
 - Dashboard  
 - Performance  
 - Blocking Monitor  
 - Reports  
 - Alert Dashboard  
 - Alert Settings  
 - Managment Center  
 - **Jobs**

**Jobs Table:**

Status	Server	Job Name	Current Status	Last Run
Running	SUPPORT3\NIV	EZMENT_DeleteRemovedServers	Never Run	
Succeeded	SUPPORT3\NIV	EZMENT_RemoveExpiredBackup	Succeeded	14/8/2018 1:00 AM
Never Run	SUPPORT3\NIV	EZMENT_SUPPORT3\$NIV: EZ Manage SQL: FULL DATA DAILY	Never Run	
Never Run	SUPPORT3\NIV	EZMENT_SUPPORT3\$NIV: EZ Manage SQL: INTEGRITY WEEKLY	Never Run	
Never Run	SUPPORT3\NIV	EZMENT_SUPPORT3\$NIV: EZ Manage SQL: LOG DAILY	Never Run	
Never Run	SUPPORT3\NIV	EZMENT_SUPPORT3\$NIV: EZ Manage SQL: REINDEX WEEKLY	Never Run	
Never Run	SUPPORT3\NIV	EZMENT_SUPPORT3\$NIV: EZ Manage SQL: SHRINK WEEKLY	Never Run	
Never Run	SUPPORT3\NIV	EZMENT_SUPPORT3\$NIV: EZ Manage SQL: STATISTICS DAILY	Never Run	
Succeeded	SUPPORT3\NIV	syspolicy_purge_history	Succeeded	14/8/2018 2:00 AM

## 6

The Scheduled Operations panel provides you with multiple tasks, some of them are:

- Creating New Scheduled Jobs.
- Starting and Stopping Jobs.
- Copy Jobs.
- Edit Existing Jobs.
- Schedule Jobs.
- Enable, Disable and Delete Jobs.
- Refresh Jobs.
- Modify the General Parameters of a Job. □ History of Job Execution.

\*For detailed information, refer to the "Help File" on the software Help m

