



ComponentOne®

Doc·To·Help® 2012



Who Uses Doc-To-Help

- **Technical Communicators:**
Produce multi-platform Help and manuals
- **Policy Writers:**
Convert Word documents to searchable online content
- **Trainers:**
Create interactive Web-based training materials and printed manuals
- **Support Professionals:**
Develop easy online knowledgebases
- **Software Developers:**
Produce class library reference materials, project requirements, and user assistance

Other Popular Features

- Automatic TOC
- Easy index editing
- Powerful search
- Integration with Microsoft Sandcastle for .NET reference documentation
- Embedded Help

ComponentOne®

www.doctohelp.com

1.800.858.2739 or 1.412.681.4343

The Easiest Way to Write, Collaborate, & Publish

Whether you are writing new or using existing content, Doc-To-Help's purpose is to make your life easier by helping you manage that content, work with colleagues, and publish exactly what you need.

Creating/Using Content

Doc-To-Help reads and processes normal styles, so content can come from many popular writing environments.

- **Microsoft Word:**
Write new Word documents or use the ones you have. Doc-To-Help does not require you to convert them. Word stays in Word. You even get a Doc-To-Help toolbar.
- **Doc-To-Help's Built-in Editor:**
Edit content without leaving Doc-To-Help with the built-in XHTML editor modeled after Microsoft Office.
- **Adobe Dreamweaver and other HTML editors:**
Doc-To-Help installs a toolbar in Adobe Dreamweaver and Microsoft FrontPage allowing you to author content in those editors.
- **RoboHelp, HTML Help, and WinHelp Projects:**
Convert existing projects with Doc-To-Help's wizards.

Collaborating, Managing, and Sharing

Part of Doc-To-Help's value lies in its ability to help you configure projects, manage content, and simplify working with others.

- **Use Microsoft SharePoint to Collaborate and Manage Content:**
Doc-To-Help can use a SharePoint document library as a repository, giving you access to all of SharePoint's powerful management features. (works with Office 365)
- **Content Reuse:**
Reuse content with features like topic management and variables.
- **Multiple Language Support:**
Benefit from an array of automated translation and localization features including right-to-left output.
- **Other Collaboration Features:**
In addition to SharePoint, choose to collaborate with Doc-To-Help Team Authoring Support technology or Microsoft Team Foundation Server.

Publishing

Create the outputs you need, no matter how many versions are required, from one set of source content.

- **Powerful Single-sourcing:**
Map virtually any content, even styles and HTML tags, to as many different outputs and versions as you need.
- **Produce What You Need:**
Produce HTML Help, NetHelp (for Web deployment), Mobile Help, print-ready manuals, Help 2.0, Microsoft Help Viewer, JavaHelp, Eclipse Help, and WinHelp.
- **Publish Directly to SharePoint:**
Publish NetHelp directly to SharePoint or create a SharePoint Wiki with one click.



ComponentOne® Doc·To·Help® 2012

Write / Import

- ▶ Microsoft Word
- ▶ Doc-To-Help's Editor
- ▶ RoboHelp
- ▶ HTML Help
- ▶ WinHelp
- ▶ HTML / XHTML
- ▶ OpenOffice / MediaWiki

Collaborate / Manage

- ▶ SharePoint Integration
- ▶ Team Foundation Server (TFS)
- ▶ Built-in Features

Publish

Desktop

PCs or Macs running Windows

- ▶ HTML Help (.chm)
- ▶ WinHelp
- ▶ JavaHelp
- ▶ Eclipse Help

Tablets & Smartphones

Apple iOS, Android, Blackberry, Palm, Windows Phone

- ▶ Mobile Help

Internet / Intranet

All major browsers on PC / Mac / Linux, SharePoint 2010, Office 365

- ▶ NetHelp
- ▶ SharePoint Wiki

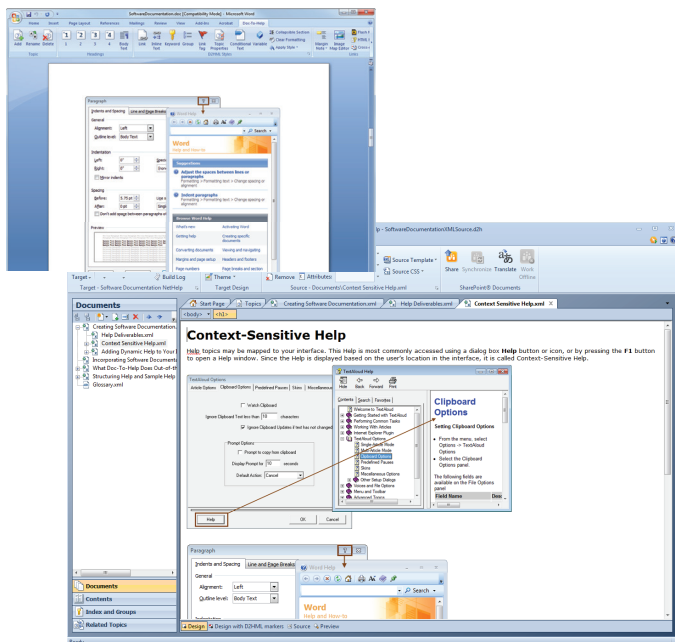
Microsoft Visual Studio

- ▶ Help 2.0
- ▶ Microsoft Help Viewer

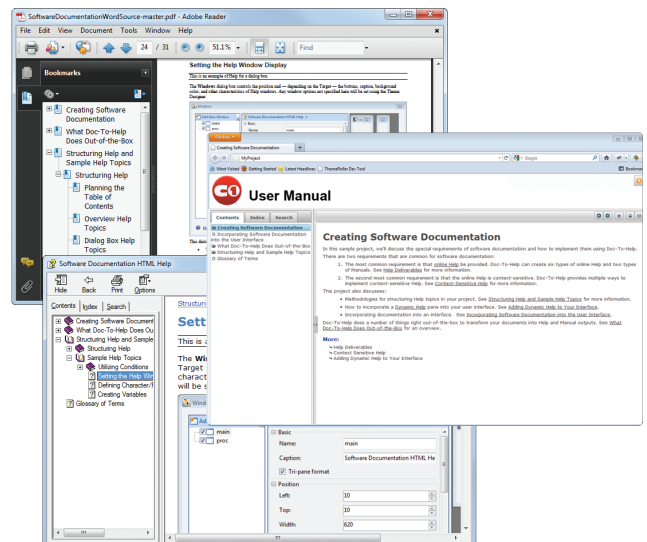
Print

- ▶ PDF
- ▶ .DOCX
- ▶ .DOC

Author in Word or Doc-To-Help



Produce all online, desktop, mobile, and print outputs from one project



www.doctohelp.com
1.800.858.2739 or 1.412.681.4343

©2012 ComponentOne LLC. All rights reserved.
All marks are the property of their respective owners.