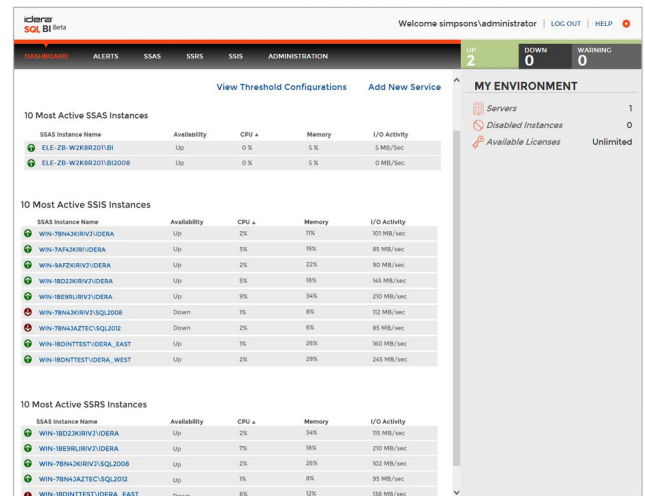


SQL Business Intelligence Manager

Monitor and manage the health and availability of SSAS, SSRS, & SSIS

SQL Business Intelligence Manager provides agentless monitoring of the servers and services for SQL Server Analysis Services, SQL Server Reporting Services, and SQL Server Integration Services. Get insight into over 140 metrics including OS counters, service performance counters, and system availability. Dashboard views display data across the entire BI environment and enable you to drill down to find details relating to performance and availability issues. In addition, configurable alerts keep you notified of the state of your BI environment so you can take corrective action as needed.



SOLUTIONS FOR SQL SERVER BI SERVICES

WHY SQL BUSINESS INTELLIGENCE MANAGER?

It's one thing to know that the report your boss relies on is running slow or your ETL job takes all night. What's even better is to know why those things are happening. With SQL Business Intelligence Manager, you can take control of your BI infrastructure. Having insight into your SQL Server Analysis Services, SQL Server Reporting Services, and SQL Server Integration Services environment makes it easy to identify issues that can quickly be resolved to optimize the performance of your BI environment. In addition to knowing why those issues occur, email notifications alert you when services are performing poorly through the configurable alerts functionality. Set your own thresholds to trigger the alerts for a variety of BI components such as report generation performance and memory and CPU usage of a service. With the web based console, all of the information is a few clicks away.

PRODUCT HIGHLIGHTS

- **BI Monitoring** Agentless monitoring of SSAS, SSRS, and SSIS health
- **View Activity** View active sessions, workload, & report generation progress
- **View Data** View cube sizes & report generation performance
- **Configurable Alerts** Setup alerts with configurable thresholds
- **Web based console** Simple-to-use, clean design for easy navigation

KEY BENEFITS

Broad Visibility into SQL BI

Over 140 metrics across SQL Server Analysis Services, SQL Server Reporting Services, and SQL Server Integration Services to keep you informed about the health and availability of both the service as well as the server they reside on.

Be Informed

Alert views and configurable email alerting keeps the appropriate individuals informed on critical issues pertaining to the health and status of your BI environment.

Collaborate and Share

Export data from each view to send to management or share and collaborate with team members.

SYSTEM REQUIREMENTS

Services

Windows Server 2008 SP1+, Windows 2008 R2, Windows 2012

SQL Server Repository

SQL Server 2005, SQL Server 2008, SQL Server 2008 R2, SQL Server 2012, SQL Server 2014

Monitored SQL Servers

SQL Server 2008, SQL Server 2008 R2, SQL Server 2012, SQL Server 2014

Browser Requirements

Internet Explorer 9+, Chrome, Firefox

Lightweight Solution

Agentless monitoring means no need to install any software on your BI servers. In addition, a web based console makes it easy to provide access to any team member who needs to monitor the BI environment without installing the console on multiple systems.

Secure

Role based security makes it easy to give and restrict access to the applications based on a user's role in the organization.

MONITORING OF BI SERVICES

SQL Server Analysis Services (SSAS)

- Monitor the health and status of the SSAS service
- The dashboard view displays the top 10 most active SSAS instances by CPU usage, memory, and active sessions
 - Also listed: display name; availability; and I/O activity
 - Drill down capability to obtain specific instance details
 - Ability to expand the list to view all SSAS instances
- View over 30 performance metrics and their alert status for SSAS
- View over 15 operating system metrics and their alert status for a SSAS service machine
- View the top 10 SSAS sessions and over 20 metrics associated with each session and an option to expand to view all SSAS sessions
- View the top 10 SSAS objects and 15 metrics associated with each object and an option to expand to view all SSAS objects
- View the top 10 SSAS cube sizes with an option to expand to view all SSAS cube sizes

SQL Server Reporting Services (SSRS)

- Monitor the health and status of the SSRS service including OS counters, SSRS report server counters, SSRS web server counters, and SSRS Windows service counters
- The dashboard view displays the top 10 most active SSRS instances by CPU usage, memory, and active sessions
 - Also listed: display name; availability; and I/O activity
 - Drill down capability to obtain specific instance details
 - Ability to expand the list to view all SSRS instances
- View over 40 performance metrics and their alert status for SSRS covering: web services; reporting services; and Windows services
- View over 15 operating system metrics and their alert status for a SSRS service machine
- Report activity view displays the top 10 most recent report runs
 - Listed activity includes time required for: gathering data; processing; and rendering
 - Failed reports and reason for failure also displayed
- Monitor the health of the SSRS server including resource utilization for each server running SSRS, utilization for every report being created as well as report jobs that failed

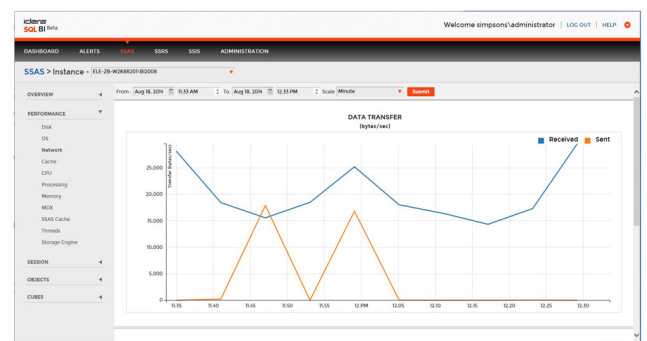
SQL Server Integration Services (SSIS)

- Monitor the health and status of the SSIS service
- The dashboard view displays the top 10 most active SSIS instances by CPU usage, memory, and active sessions
 - Also listed: display name; availability; and I/O activity
 - Drill down capability to obtain specific instance details
 - Ability to expand the list to view all SSIS instances
- View over 10 performance metrics and their alert status for SSIS
- View over 15 operating system metrics and their alert status for a SSIS service machine

CONFIGURABLE THRESHOLD ALERTING

Set up alerts. Know about problems before your users

- Alert capabilities for over 100 BI Service related items
- Color coded alerts are also viewable through the dashboard with drill down capabilities to obtain detailed information
- Alerts may be configured to provide a critical level threshold as well as informational and warning level thresholds in order to let you know when service performance is starting to degrade
- SSAS, SSRS & SSIS availability alerts enabled automatically
- SSAS, SSRS & SSIS response time alerts enabled automatically



Download a **FREE 14-Day Trial**
at www.idera.com

US +1 713 523 4433
877 GO IDERA (464 3372)

EMEA +44 (0) 1753 218410

APAC +61 1300 307 211

MEXICO +52 (55) 8421 6770

BRAZIL +55 (11) 3230 7938

WEB www.idera.com

TWITTER [www.twitter.com/Idera_Software](https://twitter.com/Idera_Software)

FACEBOOK www.facebook.com/IderaSoftware

LINKEDIN <http://www.linkedin.com/company/idera-software>