

Idera's SQL safe provides a high-performance backup and recovery solution for Microsoft SQL Server. SQL safe saves money by reducing database backup time by up to 50% over native backups and reducing backup disk space requirements by up to 95%. SQL safe also enables complete 'hands-free' automated backup of your entire SQL Server infrastructure and ensures compliance with your organization's backup and recovery policies. From implementations with tens of SQL servers to enterprises with hundreds of servers spread around the globe, SQL safe is the only SQL Server backup and recovery solution that scales to meet the challenge.

WHY SQL SAFE?

In many organizations today, SQL Server databases are the repository for large volumes of business critical data. As database size grows, the time required to complete the scheduled backups can easily exceed maintenance windows. Restore operations also become time-consuming, and huge amounts of storage space are needed for the backups. DBAs need a powerful backup and recovery solution that greatly reduces backup and recovery time, minimizes storage requirements, and provides enterprise management capabilities to conduct backups across a large numbers of servers simultaneously. SQL safe has been specifically designed to meet these requirements, resulting in increased application and business availability for your critical SQL Server infrastructure.

PRODUCT HIGHLIGHTS

- Fast, compressed and encrypted backup and restore
- Save space – compress files by up to 95%
- Save time – at least 50% faster than native backups
- Virtually eliminates application down time using Instant Restore
- Central management of backups enterprise-wide

“

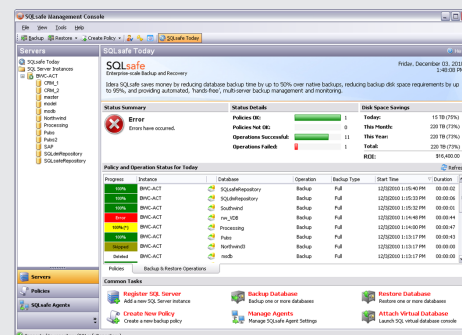
Now that we have SQL safe, full backup time on one of our servers is down from 100+ hours to 30 hours or less. This is an incredible time considering the amount of data we're backing up!

”

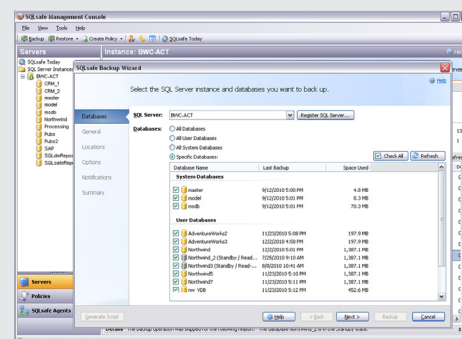
- Data/System Architect
Healthcare Information Services Company

Compress & Encrypt SQL Server Backups

idera®



SQL safe enables complete, “hands-free”, automated management of your entire SQL Server backup infrastructure and ensures compliance with your organization's backup and recovery policies.



SQL safe is easy to use
User-friendly wizards are provided for all key tasks. The backup wizard shown here allows you to quickly execute backup operations across multiple databases - simultaneously, or one at a time.

SYSTEM REQUIREMENTS

Management Console, Management Service, and Data Repository

- Windows 2000 SP4, Windows XP SP3, Windows 2003 SP2, Windows 2008 SP1, Windows Vista SP1, Windows 7, Windows 2008 R2
- Microsoft .NET 2.0 SP1
- Repository: SQL Server 2005 SP1+, SQL Server 2008, SQL Server 2008 R2, SQL Server 2012

Backup Agent

- Windows 2000 SP4, Windows XP SP3, Windows Server 2003 SP2, Windows 2008 SP1, Windows Vista SP1, Windows 7, Windows 2008 R2
- Microsoft .NET 2.0 SP1
- SQL Server 7 SP3+, SQL Server 2000 SP4, SQL Server 2005 SP1+, SQL Server Express, SQL Server 2008, SQL Server 2008 R2, SQL Server 2012

Instant Restore

- Windows XP SP3, Windows 2003 SP2, Windows 2008, Windows Vista SP1, Windows 7, Windows 2008 R2
- Microsoft .NET 2.0 SP1

Supported TSM Environments

- TSM Client version 5.4, 5.5, 5.6, 6.1, 6.2 TSM Server version, 5.4, 5.5, 5.6, 6.1, 6.2

SQL safe does not require the installation of any additional databases, DLLs, scripts, stored procedures, or tables on the SQL Server instances.

TECHNICAL FEATURES

HIGH PERFORMANCE BACKUP AND RECOVERY

- **IntelliCompress2™ Technology:** Provides state of the art technology that continually samples system resources and automatically adjusts the compression level to produce the smallest backup in the fastest possible time.
- **Instant Restore:** Patent-pending Instant Restore will bring the database online in minutes virtually eliminating application downtime. Once online, SQLsafe streams data from the backup file “on-demand” to support applications and user requests while completing the restore operation in the background.
- **IntelliRestore:** Offers innovative IntelliRestore™ graphical point in time recovery. Using a sliding time scale, choose a point in time, and SQL safe will automatically assemble all the backup components necessary to restore the database to the specified point in time.
- **Network Resilient:** Eliminate backup and restore failures due to temporary network outages by pausing and then resuming from the point where it left off once the network comes back online.
- **Encryption:** Provides AES 128 and AES 256-bit encryption with less than 0.5% performance degradation.
- **Backup Mirroring:** Quickly and easily write duplicate backup files to different locations during a single backup operation.
- **Login Copy:** Bring recovered databases online faster by allowing SQLsafe to create missing SQL Server logins and resolve any orphaned database users.

ENTERPRISE MANAGEMENT FEATURES

- **Centralized Management Console:** Provides a central enterprise console with real-time and historical monitoring of backup and restore operations as well as provide central job management capabilities.
- **Central Repository:** All backup and restore information is stored in a central repository to enable full auditing of backup history across the enterprise.
- **Backup, Restore and Log Shipping Policies:** Define backup, restore and log shipping policies and monitor to ensure backups and restores perform as specified.
- **Alerting:** Receive alerts on the result of any operation, including failures, warning, misses or even successful operations in your environment.
- **Reports:** Provides a comprehensive catalog of customizable reports delivered using Microsoft SQL Server Reporting Services.
- **Tivoli Storage Manager Integration:** Provides an interface to IBM Tivoli Storage Manager (TSM) for permanent, state-of-the-art storage of SQL safe backup files.
- **Multiple Interfaces:** Provides multiple interfaces – enterprise console, command-line and XSP.

KEY BENEFITS

Maximize backup file compression — SQL safe’s new patent-pending IntelliCompress2™ technology continually samples system resource usage and automatically adjusts the compression level to ensure the best compression given the state of the environment.

Reduces backup time dramatically — SQL safe contains highly advanced compression, disk writing and multi-threading technologies that dramatically increase the speed of backup execution. Reducing backup time increases the available window in which to perform other critical SQL Server maintenance activities.

Reduces failures due to network glitches — SQL safe greatly reduces the possibility of a failure due to a network problem. If a temporary network outage occurs, SQL safe will simply pause and pick up where it left off once the network is back online.

Accelerates Mean Time to Recovery — SQL safe has been engineered to perform well when you most need it – in an emergency recovery situation. SQL safe offers both traditional and Instant Restore capabilities which allows DBAs greater

Ensures compliance with corporate policies — SQL safe offers unique Policy based management which enables DBAs to define and automate a backup, restore or log shipping schedule across multiple servers and databases. This greatly simplifies the task of setting up and managing backup and log shipping schedules and provides exception reporting to highlight any jobs that did not complete as scheduled.

idera®

Idera is headquartered in Houston, TX with offices in London and Melbourne.

US	+1 713 523 4433 877 GO IDERA (464 3372)
EMEA	+44 (0) 1753 218410
APAC	+61 1300 307 211
MEXICO	+52 (55) 8421 6770
BRAZIL	+55 (11) 3230 7938

WEB	www.idera.com
TWITTER	www.twitter.com/Idera_Software
FACEBOOK	www.facebook.com/IderaSoftware
LINKEDIN	www.linkedin.com/groups?gid=2662613