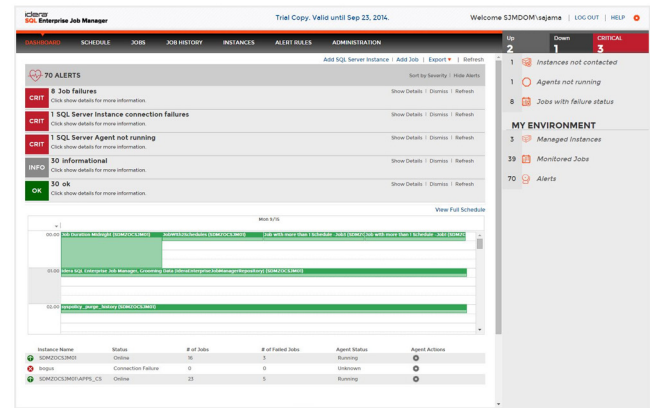


# SQL Enterprise Job Manager

## Monitor and manage SQL Server agent jobs

SQL Enterprise Job Manager provides centralized job monitoring and management of your SQL Server agent jobs. Instead of having to connect to and view each instance individually, SQL Enterprise Job Manager's centralized management console makes it easy to view job status and history across the enterprise. In addition, a calendar view makes it easy to see historical job information or upcoming scheduled jobs and drag and drop capabilities make it easy to reschedule jobs.



## SOLUTIONS FOR SQL JOB MANAGEMENT

### WHY SQL ENTERPRISE JOB MANAGER?

Managing jobs across multiple servers can be difficult without the right tools. Managing all the SQL jobs throughout the enterprise one instance at a time is inefficient and time consuming. You need an easy way to view all jobs across the enterprise, rather than one instance at a time. The ability to see your scheduled jobs at a glance to make sure there aren't too many jobs competing for resources at the same time will help eliminate contention. If a job does fail, quick notification of the failure and a fast, easy way to re-run the job is important to getting you back on track. SQL Enterprise Job Manager provides an easy to use, cost effective solution to manage SQL server agent jobs.

### PRODUCT HIGHLIGHTS

- **Monitor Jobs** Monitor SQL Server agent jobs and status
- **Manage Jobs** Add, edit and delete SQL Server agent jobs
- **Calendar View** View jobs and status in a calendar format
- **Notifications** Receive job status alerts and emails
- **Central Management** Centralized job management

### KEY BENEFITS

See what is scheduled to run and when across the entire SQL Server landscape with up to the minute status information on currently running jobs.

Easily create, edit and delete SQL Server agent jobs from the jobs console. SQL EJM makes it easy to build or modify a job with a few simple clicks.

Quickly identify job status across every instance or drill down to a single instance with the easy to read color-coded calendar format.

Stay on top of issues with configurable email alerts for jobs across your SQL Server environment. Establish alerts for indicators such as when jobs fail or restart, server instance connection failures or when job agents have stopped running.

### SYSTEM REQUIREMENTS

**SQL Server Repository** (Express, Standard & Enterprise)  
SQL Server 2005 SP1+, SQL Server 2008, SQL Server 2008 R2, SQL Server 2012, SQL Server 2014

**Monitored SQL Servers** (Standard & Enterprise)  
SQL Server 2005 SP1+, SQL Server 2008, SQL Server 2008 R2, SQL Server 2012, SQL Server 2014

**Browser Support**  
Internet Explorer 9+, Chrome, Firefox

**Windows Support**  
Windows Server 2008 SP2+, Windows 2008 R2, Windows 2012, Windows 7, Windows 8

Download a **FREE**  
14-Day Trial  
at [www.idera.com](http://www.idera.com)

## Monitor Jobs

SQL Enterprise Job Manager provides comprehensive monitoring of SQL Server agent jobs across the entire SQL Server landscape. See what is scheduled to run and when it is running. Get up to the minute status information on currently running jobs.

## Manage Jobs

SQL Enterprise Job Manager lets you manage jobs across multiple SQL Server instances. Easily create, edit and delete SQL Server agent jobs from the jobs console. SQL EJM makes it easy to build or modify a job with a few simple clicks.

## Calendar View

View jobs and status in an easy to read calendar format. View jobs across all of your instances or drill-down to a single instance. Jobs are color-coded to help you quickly identify the current status. Quickly view past scheduled and manually run jobs or look ahead to see future scheduled jobs.

## Notifications

Build configurable email alerts for jobs across your SQL Server environment to stay on top of issues. Establish alerts for indicators such as when jobs fail or restart, server instance connection failures or when job agents have stopped running.

## Web-Based Management Console

SQL Enterprise Job Manager is a stand-alone web console. With the web-based management console, you can login remotely from anywhere to monitor and manage your SQL Server agent jobs.

**Create & Modify Jobs** Create new SQL Server agent jobs or modify existing jobs on a single managed instance or across multiple instances.

- The easy to use job wizard guides you step-by-step through the job creation process.
- Click on any monitored job to add or edit steps, change the run schedule, or update alerts and notifications.

**Alerts & Notifications** Create job alerts and set up email notifications to stay informed and on top of issues as they happen. Set custom alert thresholds to make sure you receive notifications tailored to your environment.

**Job History** View the run history of all monitored jobs. The job history page provides an overview of each jobs status, run duration, and summary of the results. Filtered views help you quickly get to the information you want. You can also export the data as a .PDF, .CSV, or XML file.

## Architecture

### Scalable

- Built to manage jobs across your entire SQL Server environment
- Customize the job status collection interval by instance to optimize the balance between performance and data.

### Lightweight Web UI

- Stand-alone web application; no need for IIS.
- Intuitive web-based UI; sign on and use remotely from anywhere.

## TECHNICAL FEATURES

### Enterprise Job Management

**Dashboard View** The intuitive dashboard provides an easy to read overview of job environment. Get an alert summary, schedule of the day's jobs and their status, and an overview each managed instance. Then point and click to get more details and take action.

**Calendar Schedule View** The calendar schedule helps you see jobs and status in an easy to read calendar format across all of your instances or drill-down to a single instance.

- View schedule by day, week or month.
- Jobs are color-coded to help you quickly identify the current status.
- View past scheduled and manually run jobs or look ahead to see future scheduled jobs.
- Drag and drop jobs to reschedule.

**US** +1 713 523 4433  
877 GO IDERA (464 3372)

**EMEA** +44 (0) 1753 218410

**APAC** +61 1300 307 211

**MEXICO** +52 (55) 8421 6770

**BRAZIL** +55 (11) 3230 7938

**WEB** [www.idera.com](http://www.idera.com)

**TWITTER** [www.twitter.com/Idera\\_Software](https://twitter.com/Idera_Software)

**FACEBOOK** [www.facebook.com/IderaSoftware](https://www.facebook.com/IderaSoftware)

**LINKEDIN** <http://www.linkedin.com/company/idera-software>