

Idera SQL secure is a security analysis solution that identifies SQL Server security violations and ensures security policies are enforced. Find out who has access to what and identify each user's effective rights across all SQL Server objects. Alert on violations of your corporate policies, monitor changes made to security settings, and provide security audit reports as well as recommendations on how to improve your security model.



WHY SQL SECURE?

Because of the many different and complex ways to grant access to SQL Server databases - including server and database roles, Active Directory and local groups, inherited permissions, explicit grants and denies, just to name a few - it is virtually impossible to manually analyze a security model across instances or determine a user's rights on specific database objects. SQL secure does this for you, answering the important question "Who can do what, where, and how on my SQL Servers?" SQL secure provides a comprehensive, automated solution for analyzing, monitoring, and reporting on security access rights in SQL Server databases.

PRODUCT HIGHLIGHTS

- Identify vulnerabilities and harden security across your SQL Servers
- Diagnose and protect against violations of your security policies and security best practices
- Analyze and manage user permissions across all SQL Server objects with our powerful security model analysis
- Provides customizable templates for CIS, DISA STIG, and regulatory standards such as PCI and HIPAA

KEY BENEFITS

Powerful Security Model Analyses - gather a complete picture of the security of your SQL Server environment with the analysis and reporting tools provided by SQLsecure.

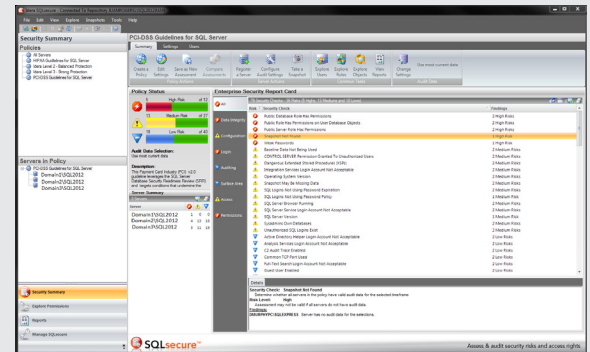
Analyses available include:

- **Effective User Permissions:** select a user and discover all assigned and effective rights and permissions at the server, database, and object level.
- **Users and Groups:** drill up or down on users and groups. From a group, see the list of group members and select a member for further analysis. From a user, see the group memberships and drill upwards to review the inherited permissions.
- **Object Access Rights:** browse and analyze the full SQL Server object tree from server level down to object level, tables, roles, endpoints and more. Instantly view assigned and effective/inherited permissions and security related properties at any object level.

Continuous Change Monitoring - provides the ability to capture snapshots of the security model on a regularly scheduled or ad-hoc basis in order to identify changes to access rights and security settings. This enables rapid analysis and detection of unwanted changes to security settings.

Regulatory Policy Templates - Provides templates for PCI and HIPAA compliance that additionally leverages guidelines from Department of Information Systems Agency - Microsoft SQL Server Database Security Technical Information Guide version 8, release 1.7.

Comprehensive Security and Entitlement Reporting - use the report catalog to track vulnerabilities, security changes, and user entitlement over time.



Security Report Card with Idera Level 2 Balanced Protection

SQL secure provides an Idera defined Level 2 security check for balanced intrusion protection that leverages MSBPA, CIS guidelines, and more! With the security report card, the top security vulnerabilities are identified on your servers. Each security check is categorized: High Risk, Medium Risk, or Low Risk. You can drill into each security check to get more detail.

SYSTEM REQUIREMENTS

Management Console

- Windows 2000 Server SP4 or later, Windows XP SP2 or later, Windows Server 2003 SP2 or later, Windows Server 2008, Windows Server 2008 R2, Windows Vista Business and Enterprise, Windows 7
- Microsoft .NET 2.0 SP1 or later
- IE 7.0 or later for online help
- MDAC 2.8 or later

Data Repository

- SQL Server 2005 SP1 or later, SQL Server 2008, SQL Server 2008 R2, SQL Server 2012

Microsoft SQL Server for Audited Instances

- SQL Server 2000, SQL Server 2005, SQL Server 2008, SQL Server 2008 R2, SQL Server 2012.

SQLsecure does not install any components, DLLs, scripts, stored procedures or tables on the SQL Server instances being monitored.

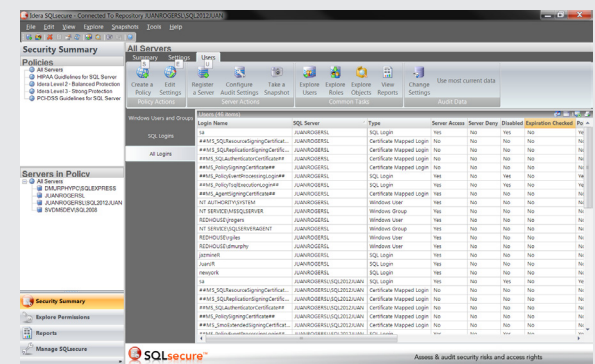
TECHNICAL FEATURES

SECURITY ANALYSIS & REPORTING

- **Effective Rights Analysis** - analysis of users' effective rights shows you how and where each right is granted, making it easy to pinpoint exactly what changes need to be made in order to close security holes.
- **SQL Server Files, Directories, and Registry Settings** - browse and analyze all files, directories, and registry settings associated with SQL Server and determine ownership as well as explicit and inherited security rights.
- **Weak Password Detection** - Analyzes password health of SQL Server logins and reports on when passwords are weak or blank.
- **SQL Server Surface Area and Protocols** - identifies services, ports, protocols, and API's that may allow SQL Server to be attacked by a malicious user. Enables you to understand and standardize which services you really need started or activated in your environment in order to reduce risk.
- **OS Security Analysis** - assess the OS setup to identify issues that would compromise SQL Server security.
- **Powerful User Analysis** - analyze membership to powerful server roles and groups such as administrators, system administrators, and security administrators so you can ensure this level of access is warranted.
- **Security Scorecard** - lists potential security concerns on your SQL Servers such as cross-database chaining and gives you the ability to drill down to view the full details.
- **Detection of Unresolved Windows accounts** - SQL secure shows you all logins on the target server, as well as any unresolved Windows accounts or groups.
- **Server Security Properties** - show all security related properties for servers including: version and patch level, authentication mode, audit mode, proxy account, and cross-database chaining.
- **Comprehensive Security Model Version History and Baselining** - the SQL secure Repository keeps a complete history of SQL Server security settings, providing the ability to designate a baseline to compare against future snapshots to detect changes. This also provides a valuable audit trail for forensic analysis.
- **Powerful Reporting** - use built-in standard reports for security auditing and compliance; plus, produce custom reports or perform custom analysis via the data stored on the SQL secure repository. Data can also be exported to Excel.
- **Cross-server Reporting** - provides the ability to show security state from a global view (e.g. all instances with guest accounts enabled).

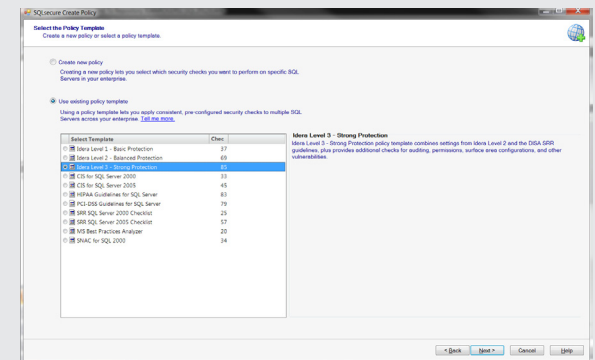
ENTERPRISE MANAGEMENT FEATURES

- **Central Console for Analysis and Auditing** - provides an easy-to-use single point of control to manage the creation of collection rules, view collection history, analyze user access rights, and more.
- **Configurable Data Collection** - define exactly what SQL Server security information you want to gather and when. Gathers from SQL Server, OS, File System, Registry, and AD.
- **Central Repository of Security Information** - all data collected by SQL secure is stored in a central repository for easy reporting and forensic analysis.



Audit SQL User Permissions

Use the flexible grid view to audit and analyze user permissions. Sort, group, or export all SQL Server logins in your enterprise. View all users' assigned and effective rights and permissions at the server, database, and object level.



Policy Templates

Import and deploy policy templates with recommendations derived from well-known authorities such as DISA SRR, CIS, SNAC, or use the Idera-defined templates which combine those recommendations into 3 distinct levels of protection (Basic, Balanced, Strong). Additionally, templates are available to help compliance with PCI and HIPAA regulations.

idera®

Idera is headquartered in Houston, TX with offices in London and Melbourne.

US +1 713 523 4433
877 GO IDERA (464 3372)
EMEA +44 (0) 1753 218410
APAC +61 1300 307 211
MEXICO +52 (55) 8421 6770
BRAZIL +55 (11) 3230 7938

WEB www.idera.com
TWITTER www.twitter.com/Idera_Software
FACEBOOK www.facebook.com/IderaSoftware
LINKEDIN www.linkedin.com/groups?gid=2662613