

# **SQL Boost**

## **Version 2.9**



## Table of Contents

1. SQL Boost (Formerly SQL Traffic Accelerator) Home .....	3
1.1 SQL Boost Release Notes .....	4
1.1.1 New features and fixed issues .....	5
1.1.2 Known issues .....	6
1.2 Welcome to SQL Boost .....	7
1.2.1 What is SQL Boost? .....	8
1.2.2 How SQL Boost helps .....	9
1.2.3 Find answers .....	10
1.2.3.1 Contact Idera .....	11
1.2.3.2 Using Help .....	12
1.2.3.3 Document conventions .....	13
1.2.4 About Idera .....	14
1.2.4.1 Idera products .....	15
1.2.4.2 Legal notice .....	16
1.3 Get started .....	20
1.3.1 Product requirements .....	21
1.3.2 How to install SQL Boost .....	23
1.3.3 Configure your deployment .....	25
1.3.3.1 Access the SQL Boost Control Console .....	26
1.3.3.2 Manage license .....	27
1.3.3.3 Start or stop SQL Boost .....	28
1.3.3.4 Encrypt returned SQL Server instance data .....	30
1.3.3.5 Configure compression statistics collection .....	32
1.3.4 Troubleshooting .....	33
1.4 Manage SQL Boost on your instances .....	34

# SQL Boost (Formerly SQL Traffic Accelerator) Home

## SQL Boost

SQL Boost, formerly SQL Traffic Accelerator, is a utility that installs on SQL Server and its clients that compresses and optimizes the SQL Server TDS protocol by as much as 90%. This process greatly reduces bandwidth requirements and significantly improves performance.

Need more help? Search the Idera Customer Support Portal

<a href="#">Idera Website</a>	<a href="#">Products</a>	<a href="#">Purchase</a>	<a href="#">Support</a>	<a href="#">Community</a>	<a href="#">About Us</a>	<a href="#">Resources</a>	<a href="#">Legal</a>
-------------------------------	--------------------------	--------------------------	-------------------------	---------------------------	--------------------------	---------------------------	-----------------------

## SQL Boost Release Notes

Idera SQL Boost delivers enhanced performance and data security for SQL Server applications and replication. Through advanced compression of both the transportation and application layers, it improves data transfer performance and reduces the amount of network bandwidth you need to get the job done. Smart compression adapts to the application and data being transferred to reduce latency and improve throughput while optimizing CPU utilization. Data is secured using end-to-end data encryption.

To get a quick glimpse into the newest features, fixed issues, and known issues in this release of SQL Boost, review the following sections of the Release Notes:

- [New features and fixed issues](#)
- [Known issues](#)

Need more help? Search the Idera Customer Support Portal

<a href="#">Idera Website</a>	<a href="#">Products</a>	<a href="#">Purchase</a>	<a href="#">Support</a>	<a href="#">Community</a>	<a href="#">About Us</a>	<a href="#">Resources</a>	<a href="#">Legal</a>
-------------------------------	--------------------------	--------------------------	-------------------------	---------------------------	--------------------------	---------------------------	-----------------------

## New features and fixed issues

SQL Boost provides the following new features and fixed issues.

### 2.9 New features

#### *Easily collect compression statistics for reporting*

You now can collect compression and bandwidth statistics to more easily build a report showing the value SQL Boost provides to your organization. This feature also allows you to track network usage for your SQL data traffic, which can aid in current and future bandwidth planning.

### 2.9 Fixed issues

There are no fixed issues in this release.

Need more help? Search the Idera Customer Support Portal

<a href="#">Idera Website</a>	<a href="#">Products</a>	<a href="#">Purchase</a>	<a href="#">Support</a>	<a href="#">Community</a>	<a href="#">About Us</a>	<a href="#">Resources</a>	<a href="#">Legal</a>
-------------------------------	--------------------------	--------------------------	-------------------------	---------------------------	--------------------------	---------------------------	-----------------------

## Known issues

Idera strives to ensure our products provide quality solutions for your SQL Server needs. The following known issues are described in this section. If you need further assistance with any issue, please contact [Support \(www.idera.com/support\)](http://www.idera.com/support).

- There are no known issues in this release.

Need more help? Search the Idera Customer Support Portal

<a href="#">Idera Website</a>	<a href="#">Products</a>	<a href="#">Purchase</a>	<a href="#">Support</a>	<a href="#">Community</a>	<a href="#">About Us</a>	<a href="#">Resources</a>	<a href="#">Legal</a>
-------------------------------	--------------------------	--------------------------	-------------------------	---------------------------	--------------------------	---------------------------	-----------------------

## Welcome to SQL Boost

The SQL Boost is an innovative technology that compresses network traffic for SQL Server 2000, 2005, 2008, 2012, and 2014. By optimizing the Tabular Data Stream (TDS) protocol, SQL Boost allows for better data transfer performance while reducing bandwidth utilization.

This wiki helps you understand SQL Boost characteristics and provides step-by-step help on how to use all its features.

Need help using SQL Boost? See the following sections:

- [How to install SQL Boost](#)
- [Start or stop SQL Boost](#)
- [Encrypt returned SQL Server instance data](#)
- [Manage SQL Boost on your instances](#)

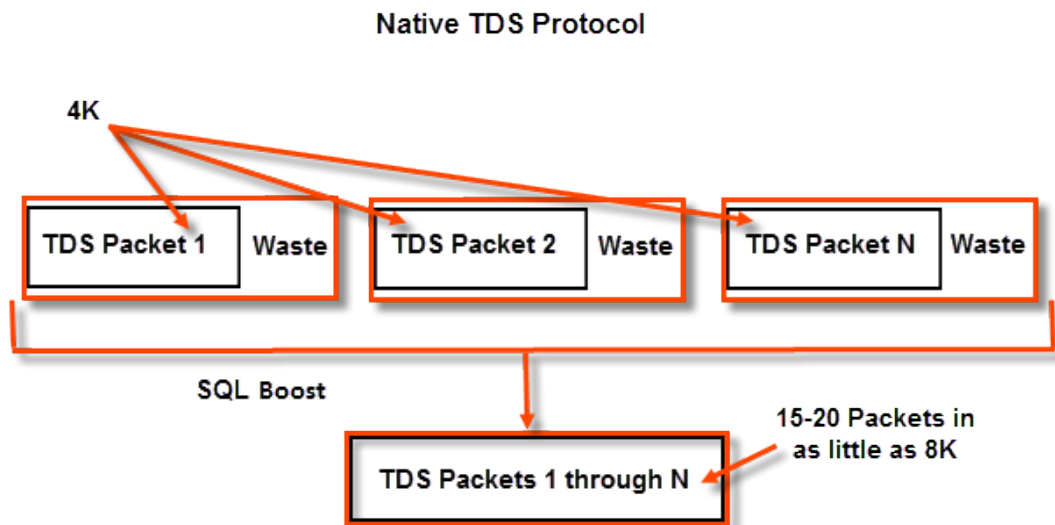
Need more help? Search the Idera Customer Support Portal

<a href="#">Idera Website</a>	<a href="#">Products</a>	<a href="#">Purchase</a>	<a href="#">Support</a>	<a href="#">Community</a>	<a href="#">About Us</a>	<a href="#">Resources</a>	<a href="#">Legal</a>
-------------------------------	--------------------------	--------------------------	-------------------------	---------------------------	--------------------------	---------------------------	-----------------------

## What is SQL Boost?

Idera SQL Boost sits between SQL Server and its clients and turns the normally inefficient SQL Server TDS protocol into a tight, highly compressed, and optimized protocol. The following image shows the native TDS protocol versus the SQL Boost protocol.

### TCP Buffer Usage



Need more help? Search the Idera Customer Support Portal

<a href="#">Idera Website</a>	<a href="#">Products</a>	<a href="#">Purchase</a>	<a href="#">Support</a>	<a href="#">Community</a>	<a href="#">About Us</a>	<a href="#">Resources</a>	<a href="#">Legal</a>
-------------------------------	--------------------------	--------------------------	-------------------------	---------------------------	--------------------------	---------------------------	-----------------------



## How SQL Boost helps

SQL Boost provides:

- **Efficient use of TCP/IP protocol.** Not only is bandwidth and performance improved through compression, but the TCP/IP protocol is also more efficiently used by turning TDS into a variable length protocol. Whereas the native protocol would transfer one packet of 4096 bytes into a single TCP buffer, SQL Boost packs 15 or more packets into a single buffer. It is not uncommon for a 4K packet to be reduced to a mere 300 or 400 bytes.
- **Improved performance.** Because SQL Boost is specifically developed to optimize the TDS protocol, it has a far greater impact on bandwidth and performance than hardware compression technologies. Additionally, SQL Boost uses adaptive compression technology that automatically detects when uncompressible data is encountered, so SQL Boost never has a negative impact on performance.
- **Simplified networks.** This compression and optimization takes low-speed WAN connections and makes them perform nearly on par with 100 BASE-T connections, and 100 BASE-T connections perform on par with 1000 BASE-T connections or better. Additionally, SQL Boost can be used to free up bandwidth on congested networks, regardless of speed.

Need more help? Search the Idera Customer Support Portal

<a href="#">Idera Website</a>	<a href="#">Products</a>	<a href="#">Purchase</a>	<a href="#">Support</a>	<a href="#">Community</a>	<a href="#">About Us</a>	<a href="#">Resources</a>	<a href="#">Legal</a>
-------------------------------	--------------------------	--------------------------	-------------------------	---------------------------	--------------------------	---------------------------	-----------------------

## Find answers

This documentation set includes a comprehensive online Help system as well as additional resources that support you as you install and use the product. You can also search the Idera Solutions knowledge base, available at the Idera Customer Service Portal (<http://www.idera.com/support/faq>).

Need more help? Search the Idera Customer Support Portal

<a href="#">Idera Website</a>	<a href="#">Products</a>	<a href="#">Purchase</a>	<a href="#">Support</a>	<a href="#">Community</a>	<a href="#">About Us</a>	<a href="#">Resources</a>	<a href="#">Legal</a>
-------------------------------	--------------------------	--------------------------	-------------------------	---------------------------	--------------------------	---------------------------	-----------------------

## Contact Idera

Please contact Idera with your questions and comments. We look forward to hearing from you. For support around the world, please contact us or your local partner.

For a complete list of our partners, please visit our Idera website.

Sales	713.523.4433 1.877.GO.IDERA (464.3372) (only in the United States and Canada)
Sales Email	<a href="mailto:sales@idera.com">sales@idera.com</a>
Support	713.533.5144 1.877.GO.IDERA (464.3372) (only in the United States and Canada) <a href="http://www.idera.com/support">www.idera.com/support</a>
Website	<a href="http://www.idera.com">www.idera.com</a>

Need more help? Search the Idera Customer Support Portal

<a href="#">Idera Website</a>	<a href="#">Products</a>	<a href="#">Purchase</a>	<a href="#">Support</a>	<a href="#">Community</a>	<a href="#">About Us</a>	<a href="#">Resources</a>	<a href="#">Legal</a>
-------------------------------	--------------------------	--------------------------	-------------------------	---------------------------	--------------------------	---------------------------	-----------------------

## Using Help

The Idera wiki includes a comprehensive online Help system as well as additional resources that support you as you install and use Idera products. You can also search multiple Idera support solutions, available at <http://www.idera.com/support/faq>

Additionally, Idera helps you by providing:

- 24/7 technical support for critical issues.
- Availability to report cases and access a web-based customer portal for update status.
- Access to our [Knowledge center](#) where you can find FAQs, How To's, Best Practices, and Webcasts.

This wiki includes the following Web browser minimum requirements:

- Internet Explorer 8.0
- Mozilla Firefox 4
- Google Chrome 6

You can access the Idera Help system through the **Help** icon on the top right section of your window or by pressing F1 on the section where you need more information.

You can print a help topic from the wiki using the Print function in your browser.

Need more help? Search the Idera Customer Support Portal

<a href="#">Idera Website</a>	<a href="#">Products</a>	<a href="#">Purchase</a>	<a href="#">Support</a>	<a href="#">Community</a>	<a href="#">About Us</a>	<a href="#">Resources</a>	<a href="#">Legal</a>
-------------------------------	--------------------------	--------------------------	-------------------------	---------------------------	--------------------------	---------------------------	-----------------------

## Document conventions

Idera documentation uses consistent conventions to help you identify items throughout the library.

Convention	Specifying
<b>Bold</b>	Window items
<i>Italics</i>	Book and CD titles Variable names New terms
Fixed Font	File and directory names Commands and code examples Text typed by you
Straight brackets, as in [value]	Optional command parameters
Curly braces, as in {value}	Required command parameters
Logical OR, as in value 1   value 2	Exclusively command parameters where only one of the options can be specified

Need more help? Search the Idera Customer Support Portal

<a href="#">Idera Website</a>	<a href="#">Products</a>	<a href="#">Purchase</a>	<a href="#">Support</a>	<a href="#">Community</a>	<a href="#">About Us</a>	<a href="#">Resources</a>	<a href="#">Legal</a>
-------------------------------	--------------------------	--------------------------	-------------------------	---------------------------	--------------------------	---------------------------	-----------------------

## About Idera

Idera is a leading provider of application and server management solutions. We have a wide variety of performance management products for Microsoft SQL Server, and award-winning server backup solutions for both managed service providers and enterprise customers. Idera products install in minutes and start solving server problems immediately, giving administrators more time, reduced overhead and expenses, and increased server performance and reliability. We are a Microsoft Gold Certified partner, headquartered in Houston, Texas, with offices in Asia Pacific, Australia, New Zealand, Europe, Africa, and Latin America. So we're everywhere your IT needs are.

Need more help? Search the Idera Customer Support Portal

<a href="#">Idera Website</a>	<a href="#">Products</a>	<a href="#">Purchase</a>	<a href="#">Support</a>	<a href="#">Community</a>	<a href="#">About Us</a>	<a href="#">Resources</a>	<a href="#">Legal</a>
-------------------------------	--------------------------	--------------------------	-------------------------	---------------------------	--------------------------	---------------------------	-----------------------

## Idera products

Our tools are engineered to scale from managing a single server to enterprise deployments with thousands of servers. Idera products combine ease of use with a design that installs in minutes, configures in hours, and deploys worldwide in days. To learn more about Idera products, visit the Idera Web site at [www.idera.com](http://www.idera.com).

Need more help? Search the Idera Customer Support Portal

<b>Idera Website</b>	<b>Products</b>	<b>Purchase</b>	<b>Support</b>	<b>Community</b>	<b>About Us</b>	<b>Resources</b>	<b>Legal</b>
----------------------	-----------------	-----------------	----------------	------------------	-----------------	------------------	--------------

## Legal notice

Idera, Inc. (“Idera”) makes information and products available on this web site, subject to the following terms and conditions. By accessing this web site, you agree to these terms and conditions. Idera reserves the right to change these terms and conditions, and the products, services, prices, and programs mentioned in this web site at any time, at its sole discretion, without notice. Idera reserves the right to seek all remedies available by law and in equity for any violation of these terms and conditions. THIS WEB SITE MAY INCLUDE TECHNICAL OR OTHER INACCURACIES. CHANGES ARE PERIODICALLY MADE TO THE INFORMATION HEREIN. HOWEVER, IDERA MAKES NO COMMITMENT TO UPDATE MATERIALS ON THIS WEB SITE.

## Trademark

IntelliCompress, PowerShellPlus, SQL Elements, SQL check, SQL change manager, SQL comparison toolset, SQL compliance manager, SQLcompliance, SQLcm, SQL defrag manager, SQL diagnostic manager, SQLdm, SQL mobile manager, SQLpermissions, SQLsafe, SQLsafe Freeware Edition, SQLsafe Lite, SQL schema manager, SQLsecure, SQLsmarts, SQLstats, SQLtool, SQL toolbox, SQL virtual database, SQLvdb, virtual database, Idera, BBS Technologies and the Idera logo are trademarks or registered trademarks of Idera, Inc., or its subsidiaries in the United States and other jurisdictions. All other company and product names may be trademarks or registered trademarks of their respective companies. Elements of this web site are protected by trade dress or other laws and may not be imitated or reproduced in whole or in part.

## Copyright

The information on this web site is protected by copyright. Except as specifically permitted, no portion of this web site may be distributed or reproduced by any means, or in any form, without Idera’s prior written consent.

## Use of the Software

The software and accompanying documentation available to download from this web site are the copyrighted work of Idera. Use of the software is governed by the terms of the License Agreement, which accompanies such software. If no license accompanies the download, the terms of the license, which accompanied the original product being updated, will govern. You will not be able to use, download, or install any software unless you agree to the terms of such License Agreement.

## Use of web site information

Except as otherwise indicated on this web site, you may view, print, copy, and distribute documents on this web site subject to the following terms and conditions:

1. The document may be used solely for informational, personal, non-commercial purposes;
2. Any copy of the document or portion thereof must include all copyright and proprietary notices in the same form and manner as on the original;
3. The document may not be modified in any way; and
4. Idera reserves the right to revoke such authorization at any time, and any such use shall be discontinued immediately upon notice from Idera.

Documents specified above do not include logos, graphics, sounds or images on this web site or layout or design of this web site, which may be reproduced or distributed only when expressly



permitted by Idera.

### **Warranties and Disclaimers; Liability Limitations**

EXCEPT AS EXPRESSLY PROVIDED OTHERWISE IN A WRITTEN AGREEMENT BETWEEN YOU AND IDERA, ALL INFORMATION AND SOFTWARE ON THIS WEB SITE ARE PROVIDED "AS IS" WITHOUT WARRANTY OR CONDITIONS OF ANY KIND, EITHER EXPRESS OR IMPLIED, INCLUDING, BUT NOT LIMITED TO, THE IMPLIED WARRANTIES OR CONDITIONS OF MERCHANTABILITY, FITNESS FOR A PARTICULAR PURPOSE, OR NON-INFRINGEMENT.

IDERA ASSUMES NO RESPONSIBILITY FOR ERRORS OR OMISSIONS IN THE INFORMATION OR SOFTWARE OR OTHER DOCUMENTS WHICH ARE REFERENCED BY OR LINKED TO THIS WEB SITE.

IN NO EVENT SHALL IDERA BE LIABLE FOR ANY SPECIAL, INCIDENTAL, INDIRECT OR CONSEQUENTIAL DAMAGES OF ANY KIND, OR ANY DAMAGES WHATSOEVER (INCLUDING WITHOUT LIMITATION, THOSE RESULTING FROM: (1) RELIANCE ON THE MATERIALS PRESENTED, (2) COSTS OF REPLACEMENT GOODS, (3) LOSS OF USE, DATA OR PROFITS, (4) DELAYS OR BUSINESS INTERRUPTIONS, (5) AND ANY THEORY OF LIABILITY, ARISING OUT OF OR IN CONNECTION WITH THE USE OR PERFORMANCE OF INFORMATION) WHETHER OR NOT IDERA HAS BEEN ADVISED OF THE POSSIBILITY OF SUCH DAMAGES. SOME STATES DO NOT ALLOW THE LIMITATION OR EXCLUSION OF LIABILITY FOR INCIDENTAL OR CONSEQUENTIAL DAMAGES SO THE ABOVE LIMITATIONS OR EXCLUSIONS MAY NOT APPLY TO YOU.

### **Submissions**

With the exception of credit card numbers for the purchase of products and services, Idera does not want to receive confidential or proprietary information through its web site.

Any information sent to Idera, with the exception of credit card numbers, will be deemed NOT CONFIDENTIAL. You grant Idera an unrestricted, irrevocable license to display, use, modify, perform, reproduce, transmit, and distribute any information you send Idera, for any and all commercial and non-commercial purposes.

You also agree that Idera is free to use any ideas, concepts, or techniques that you send Idera for any purpose, including, but not limited to, developing, manufacturing, and marketing products that incorporate such ideas, concepts, or techniques.

Idera may, but is not obligated to, review or monitor areas on its web site where users may transmit or post communications, including bulletin boards, chat rooms, and user forums. Idera is not responsible for the accuracy of any information, data, opinions, advice, or statements transmitted or posted on bulletin boards, chat rooms, and user forums.

You are prohibited from posting or transmitting to or from this web site any libelous, obscene, defamatory, pornographic, or other materials that would violate any laws. However, if such communications do occur, Idera will have no liability related to the content of any such communications.

Some companies, names, and data in this document are used for illustration purposes and may not represent real companies, individuals, or data.

### **Governing Law and Jurisdiction**

You agree that all matters relating to your access to, or use of, this web site and these terms and conditions shall be governed by the laws of the state of Texas. You agree and hereby irrevocably submit to the exclusive personal jurisdiction and venue of the state courts of Texas located in Harris County, Texas, and the United States District Court for the Southern District of Texas, with respect to such matters.

Idera makes no representation that information on this web site are appropriate or available for use in all countries, and prohibits accessing materials from territories where contents are illegal. Those who access this site do so on their own initiative and are responsible for compliance with all applicable laws.

## **Export Control Laws**

Certain Idera products, including software, documentation, services, and related technical data, available on the Idera and other web sites are subject to export controls administered by the United States (including, but not limited to, the U.S. Department of Commerce Export Administration Regulations (“EAR”)) and other countries including, controls for re-export under European Union, the Singapore Strategic Goods Control Act, and the import regulations of other countries. Diversion contrary to U.S. or other applicable law of any Idera product or service is prohibited. Export, re-export or import of products and services may require action on your behalf prior to purchase and it is your responsibility to comply with all applicable international, national, state, regional and local laws, and regulations, including any import and use restrictions. Idera products and services are currently prohibited for export or re-export to Cuba, Iran, North Korea, Sudan, Syria, or to any country then subject to U.S. trade sanctions. Idera products and services are prohibited for export or re-export to any person or entity named on the U.S. Department of Commerce Denied Persons, Entities and Unverified Lists, the U.S. Department of State's Debarred List, or the U.S. Department of Treasury's lists of Specially Designated Nationals, Specially Designated Narcotics Traffickers, or Specially Designated Terrorists. Idera products and services are prohibited from use with chemical or biological weapons, sensitive nuclear end-users, or missiles, drones or space launch vehicles capable of delivering such weapons. By downloading or using any product from this web site, or purchasing any service, you are acknowledging that you have read and understood this notice and agree to comply with all applicable export control laws. You are also representing that you are not under the control of, located in, or a resident or national of any prohibited country, and are not a prohibited person or entity. This notice is not intended to be a comprehensive summary of the export laws that govern the products and services. It is your responsibility to consult with a legal adviser to ensure compliance with applicable laws.

## **United States Government Rights**

All Idera products and publications are commercial in nature. The software, publications, and software documentation available on this web site are "Commercial Items", as that term is defined in 48 C.F.R. §2.101, consisting of "Commercial Computer Software" and "Commercial Computer Software Documentation", as such terms are defined in 48 C.F.R. §252.227-7014(a)(5) and 48 C.F.R. §252.227-7014(a)(1), and used in 48 C.F.R. §12.212 and 48 C.F.R. 227.7202, as applicable. Pursuant to 48 C.F.R. §12.212, 48 C.F.R. §252.227-7015, 48 C.F.R. §227.7202 through 227.7202-4, 48 C.F.R. §52.227-19, and other relevant sections of the Code of Federal Regulations, as applicable, Idera's publications, commercial computer software, and commercial computer software documentation are distributed and licensed to United States Government end users with only those rights as granted to all other end users, according to the

terms and conditions contained in the license agreements that accompany the products and software documentation, and the terms and conditions herein.

© 2003-2014 Idera, Inc., all rights reserved.

Need more help? Search the Idera Customer Support Portal

<a href="#">Idera Website</a>	<a href="#">Products</a>	<a href="#">Purchase</a>	<a href="#">Support</a>	<a href="#">Community</a>	<a href="#">About Us</a>	<a href="#">Resources</a>	<a href="#">Legal</a>
-------------------------------	--------------------------	--------------------------	-------------------------	---------------------------	--------------------------	---------------------------	-----------------------

## Get started

Idera SQL Boost helps you accelerate and secure your SQL Server applications. SQL Boost is a utility that installs on SQL Server and its clients that will compress and optimize the SQL Server TDS protocol by as much as 90%. This greatly reduces bandwidth requirements and significantly improves performance.

Need more help? Search the Idera Customer Support Portal

<a href="#">Idera Website</a>	<a href="#">Products</a>	<a href="#">Purchase</a>	<a href="#">Support</a>	<a href="#">Community</a>	<a href="#">About Us</a>	<a href="#">Resources</a>	<a href="#">Legal</a>
-------------------------------	--------------------------	--------------------------	-------------------------	---------------------------	--------------------------	---------------------------	-----------------------

## Product requirements

You can easily and quickly install SQL Boost on any computer that meets or exceeds the following hardware, software, and permissions requirements. Consider the following requirements when installing SQL Boost in a typical environment.

Type	Requirement
Disk Space	3 MB
32-bit Operating System (Server)	<ul style="list-style-type: none"> <li>• Windows 2000</li> <li>• Windows 2003</li> <li>• Windows 2008</li> <li>• Windows 2008 R2</li> </ul>
64-bit Operating System (Server)	<ul style="list-style-type: none"> <li>• Windows 2003</li> <li>• Windows 2008</li> <li>• Windows 2008 R2</li> <li>• Windows 2012</li> <li>• Windows 2012 R2</li> </ul>
32-bit Operating System (Client)	<ul style="list-style-type: none"> <li>• Windows XP</li> <li>• Windows Vista</li> <li>• Windows 7</li> </ul>
64-bit Operating System (Client)	<ul style="list-style-type: none"> <li>• Windows Vista</li> <li>• Windows 7</li> <li>• Windows 8 and 8.1</li> </ul>
Microsoft SQL Server Standard or Enterprise Edition 32- or 64-bit	<ul style="list-style-type: none"> <li>• SQL Server 2000</li> <li>• SQL Server 2005</li> <li>• SQL Server 2008</li> <li>• SQL Server 2008 R2</li> <li>• SQL Server 2012</li> <li>• SQL Server 2014</li> </ul>
SQL Server Client 32- or 64-bit	<ul style="list-style-type: none"> <li>• MDAC</li> <li>• Windows DAC</li> <li>• SQL Native Client (ADO, ADO.NET OLE DB, and ODBC)</li> </ul>

### SQL Boost permission requirements

To install SQL Boost, you must have administrative privileges on the target computer. If you receive an access error, check whether your currently logged on Windows account includes administrator privileges.

Need more help? [Search the Idera Customer Support Portal](#)

<a href="#">Idera Website</a>	<a href="#">Products</a>	<a href="#">Purchase</a>	<a href="#">Support</a>	<a href="#">Community</a>	<a href="#">About Us</a>	<a href="#">Resources</a>	<a href="#">Legal</a>
-------------------------------	--------------------------	--------------------------	-------------------------	---------------------------	--------------------------	---------------------------	-----------------------

## How to install SQL Boost

You do not have to install SQL Boost on all clients, but only clients that have SQL Boost installed experience a performance improvement. Note that clients with SQL Boost can connect to non-SQL Boost servers.

Install SQL Boost on your computer or workstation. The installation steps are the same for both server and client.

### To install SQL Boost:

1. Review the [product requirements](#).
2. Log in to the target computer using an account that has administrator permissions.
3. Download SQL Boost.
4. Run the **SQLBoost.msi** file. The system displays the SQL Boost wizard.
5. Complete the installation wizard. The package installs the following files on the system:
  - **IderaBoost.exe** (on 32-bit) or **IderaBoost64.exe** (on 64-bit)
  - **IderaBoost.exe** (on 32-bit) or **IderaBoost64.exe** (on 64-bit)
  - **SQLBoost.sys** (on 32-bit) or **SQLBoost64.sys** (on 64-bit)
  - **SQLBoostClient.dll** (on 32-bit) or **SQLBoostClient64.dll** (on 64-bit)
  - **SQLBoostPerformance.h**
  - **SQLBoostPerformance.ini**
  - **SQLBoostPrfInfo.dll** (on 32-bit) or **SQLBoostPrfInfo64.dll** (on 64-bit)
  - **Idera license agreements**
6. Once the wizard is complete, you must restart your SQL Server and client applications.

### To manually deploy SQL Boost:

1. Copy the previously-mentioned files to the target server and clients.
2. Use the following commands to manually register and then start the SQL Boost Service:
  - on 32-bit: `ideraboostwatch -i`  
or on 64-bit: `ideraboostwatch64 -i`
  - on 32-bit: `ideraboostwatch -s`  
or on 64-bit: `ideraboostwatch64 -s`

### Silent install

Alternatively, you can use the Microsoft Installer in silent or quiet mode to simplify deployment. For more information about performing a silent installation, run `msiexec -?` to access the Microsoft installer command line documentation.

### Terminal services install

When installing under terminal services it is important to ensure that you:

- Connect under administration mode
- Connect to the Console (session 0). To do this use the following command line:  
`mstsc -v:servername /F -console`

Need more help? Search the Idera Customer Support Portal

<a href="#">Idera Website</a>	<a href="#">Products</a>	<a href="#">Purchase</a>	<a href="#">Support</a>	<a href="#">Community</a>	<a href="#">About Us</a>	<a href="#">Resources</a>	<a href="#">Legal</a>
-------------------------------	--------------------------	--------------------------	-------------------------	---------------------------	--------------------------	---------------------------	-----------------------



## Configure your deployment

SQL Boost is designed to work seamlessly in the client-server model. Any application that is using MDAC or the SQL Native Client to connect to a SQL Server, such as SharePoint or SQL Management Studio, can use SQL Boost to compress and optimize the traffic. SQL Boost also supports server-to-server connections, such as Linked Servers, SSIS, Replication, or Analysis Services.

**i** All clients and servers are *not* required to have SQL Boost installed, but only connections that have SQL Boost on both ends will see a performance improvement.

After initially installing SQL Boost, there are a few tasks you might want to do to further customize and streamline your deployment including:

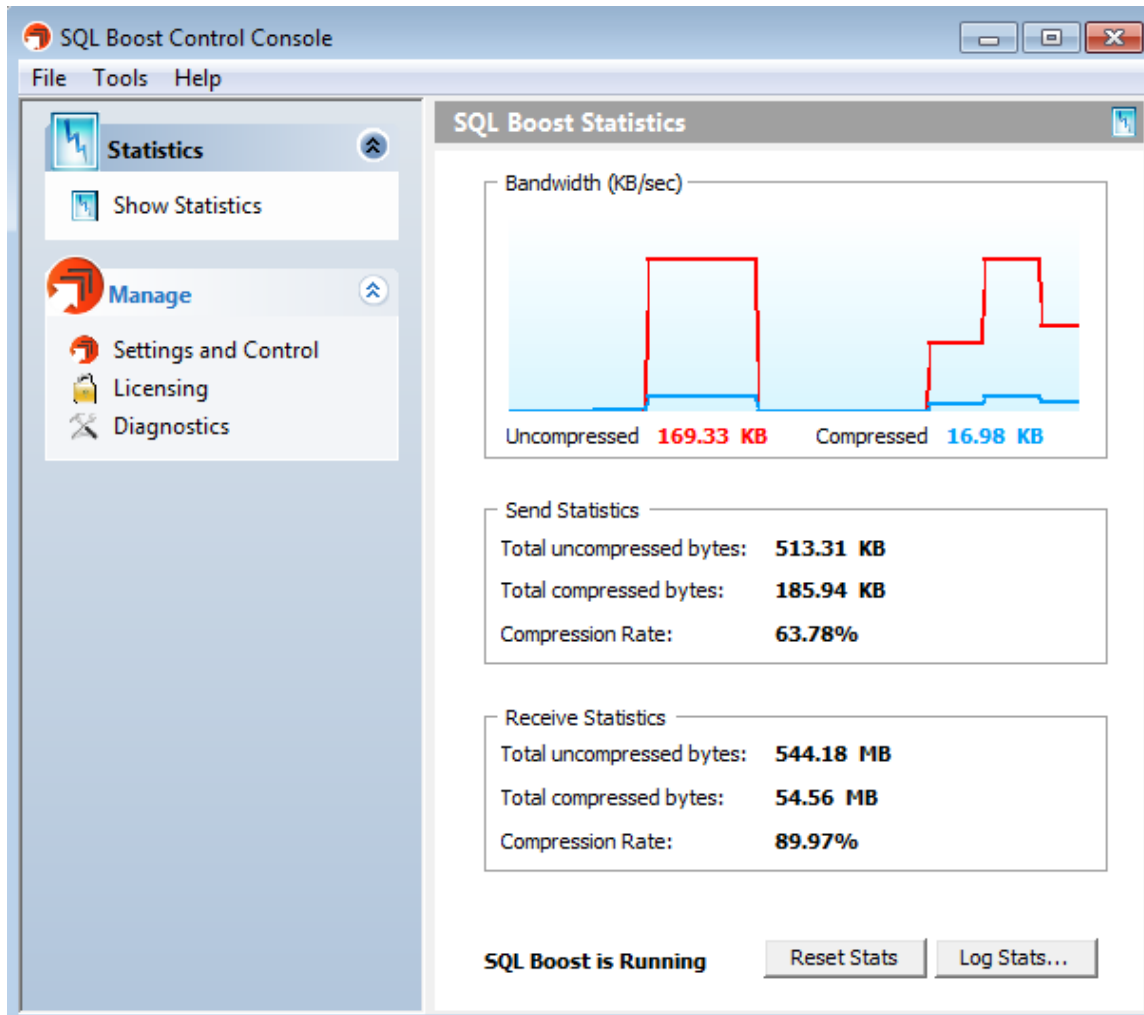
- [Access the SQL Boost Control Console](#)
- [Manage license](#)
- [Start or stop SQL Boost](#)
- [Encrypt returned SQL Server instance data](#)

Need more help? Search the Idera Customer Support Portal

<a href="#">Idera Website</a>	<a href="#">Products</a>	<a href="#">Purchase</a>	<a href="#">Support</a>	<a href="#">Community</a>	<a href="#">About Us</a>	<a href="#">Resources</a>	<a href="#">Legal</a>
-------------------------------	--------------------------	--------------------------	-------------------------	---------------------------	--------------------------	---------------------------	-----------------------

## Access the SQL Boost Control Console

After installing SQL Boost, you can launch the SQL Boost Control Console by double-clicking the icon in the system tray or by right-clicking the icon, and then selecting **Open SQL Boost Control Console**. The Console appears and shown in the following image.



### Automatically start SQL Boost

By default, the **Auto start SQL Boost at system startup** box is checked to make sure you collect statistics while your system is in use. You can disable this feature in the SQL Boost Settings and Control window by clearing the checkbox.

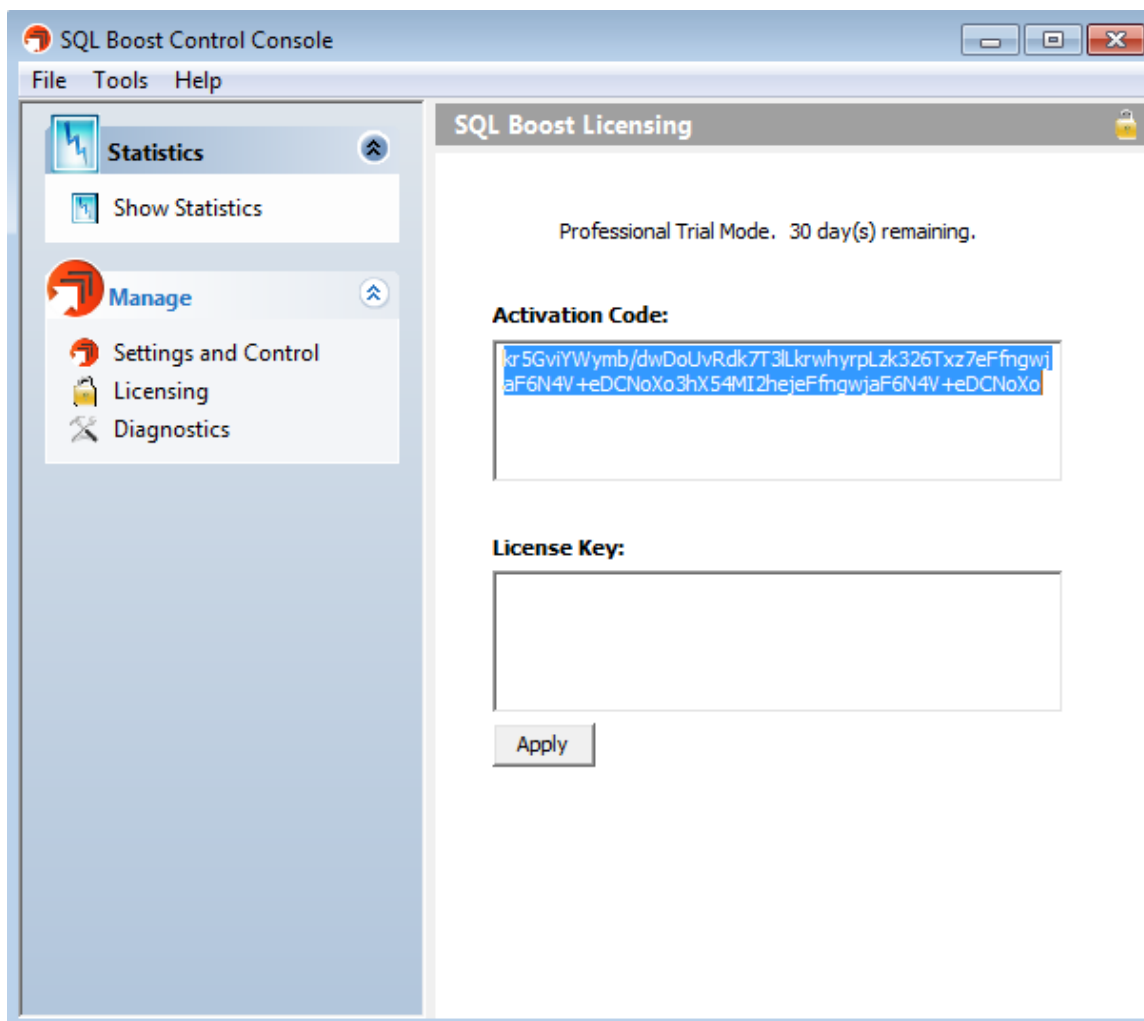
Need more help? Search the Idera Customer Support Portal

<a href="#">Idera Website</a>	<a href="#">Products</a>	<a href="#">Purchase</a>	<a href="#">Support</a>	<a href="#">Community</a>	<a href="#">About Us</a>	<a href="#">Resources</a>	<a href="#">Legal</a>
-------------------------------	--------------------------	--------------------------	-------------------------	---------------------------	--------------------------	---------------------------	-----------------------

## Manage license

Idera requires a license for all server configurations, but client installations do not need a license to operate. You can use the same SQL Boost installer for both server and client installations. Note that on the client side, once the trial license expires, you can continue to use the product without a permanent license.

SQL Boost provides a licensing window for you to enter any new license key you may receive. To access this window from the SQL Boost Control Console, click **Licensing**. SQL Boost displays the SQL Boost Licensing window as shown in the following image.



To update your license key, enter the key in the **License Key** field, and then click **Apply**.

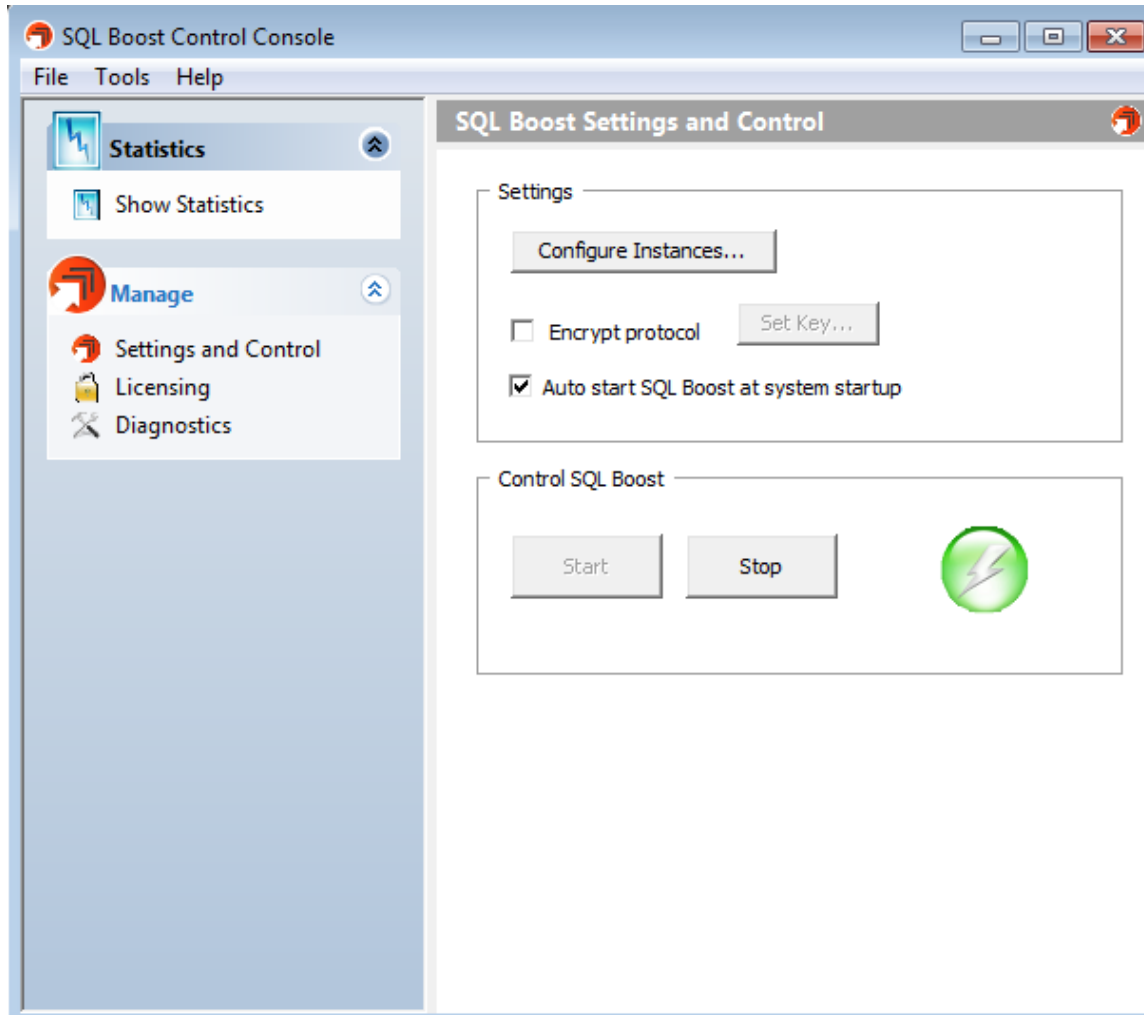
Need more help? Search the Idera Customer Support Portal

<a href="#">Idera Website</a>	<a href="#">Products</a>	<a href="#">Purchase</a>	<a href="#">Support</a>	<a href="#">Community</a>	<a href="#">About Us</a>	<a href="#">Resources</a>	<a href="#">Legal</a>
-------------------------------	--------------------------	--------------------------	-------------------------	---------------------------	--------------------------	---------------------------	-----------------------

## Start or stop SQL Boost

You can stop or start the SQL Boost service from the System tray icon by right-clicking the icon, and then selecting **Start SQL Boost** or **Stop SQL Boost**.

You can also access this functionality through the SQL Boost Control Console window by clicking **Settings and Control**. SQL Boost displays the SQL Boost Settings and Control window as shown in the following image.



**To start SQL Boost**, click **Start**. Note that the icon in the **Control SQL Boost** box changes from red to green.

**To stop SQL Boost**, click **Stop**. The system displays a confirmation message to make sure you want to stop the service. Click **Yes** to continue. Note that the icon in the **Control SQL Boost** box changes from green to red.



## Available options

Note that the **Start** button is available only when SQL Boost service is stopped, and the **Stop** button is available only when SQL Boost service is started.

Need more help? Search the Idera Customer Support Portal


<a href="#">Idera Website</a>	<a href="#">Products</a>	<a href="#">Purchase</a>	<a href="#">Support</a>	<a href="#">Community</a>	<a href="#">About Us</a>	<a href="#">Resources</a>	<a href="#">Legal</a>
-------------------------------	--------------------------	--------------------------	-------------------------	---------------------------	--------------------------	---------------------------	-----------------------

## Encrypt returned SQL Server instance data

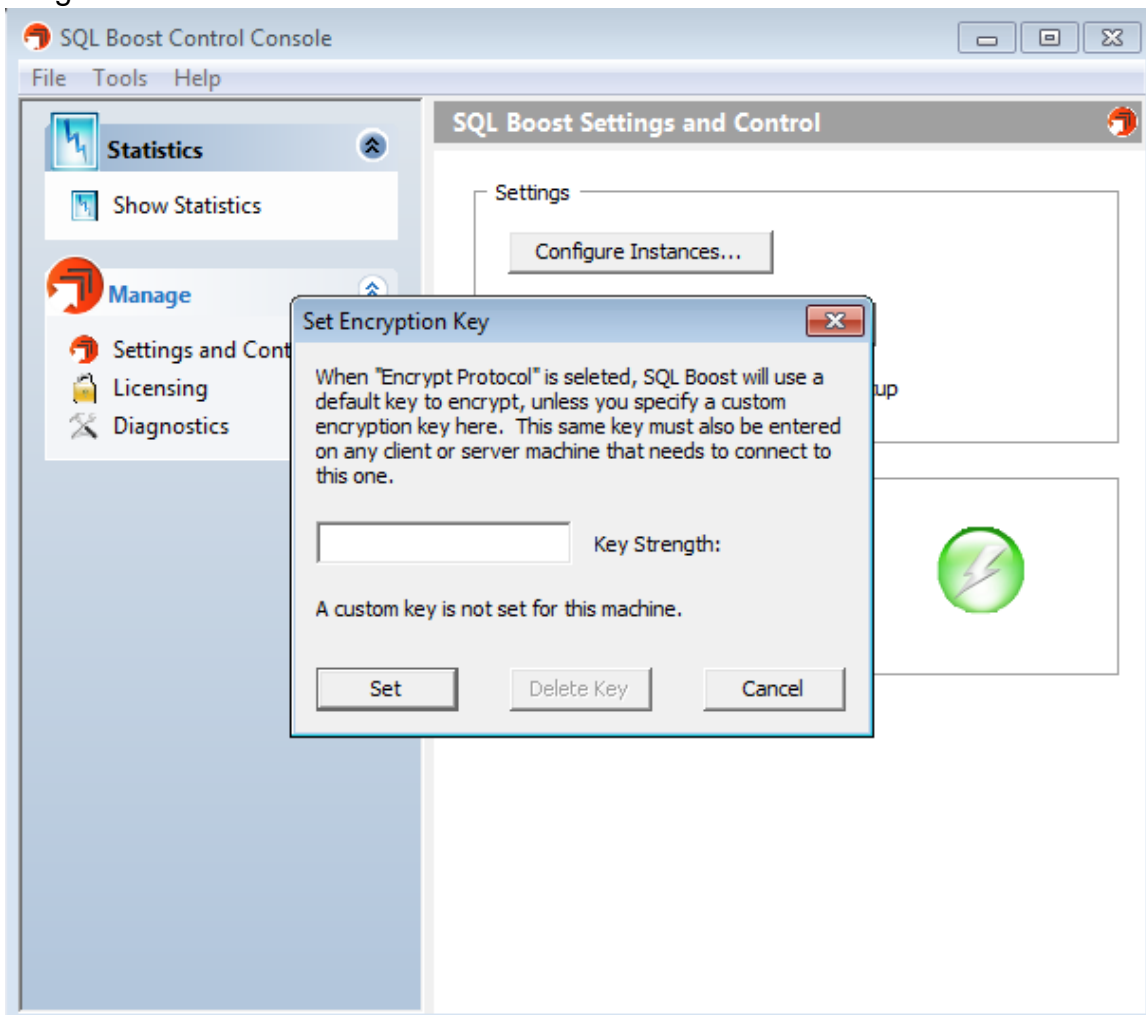
SQL Boost allows you to enable a high-speed, 128-bit encryption algorithm to encrypt the data returned from the server. Note that you need to enable this option only for the server-side installation.

### To enable encryption:

1. Open the SQL Boost Control Console, and then click **Settings and Control**. The system displays the SQL Boost Settings and Control window. Check the **Encrypt protocol** box. The system enables the **Set Key** button. *If you want to use the default encryption key*, you are done. *If you want to specify a custom encryption key*, continue with the next step.

 You must restart SQL Boost after setting a custom encryption key for the key to become active.

2. Click **Set Key**. The Set Encryption Key dialog box appears as shown in the following image.



3. Type a custom encryption key in the available field, and then click **Set**. SQL Boost displays a confirmation message to remind you that you must restart the program before you can be using the key.
4. Click **OK** to close the message.

**To delete a custom key**, simply open the Set Encryption Key dialog box, and then click **Delete Key**. SQL Boost displays a confirmation message to inform you that the key is deleted. Click **OK** to close the message.

**To disable encryption:**

1. Open the SQL Boost Control Console, and then click **Settings and Control**. The system displays the SQL Boost Settings and Control window.
2. Clear the **Encrypt protocol** box. The system disables the encryption protocol.

Need more help? Search the Idera Customer Support Portal

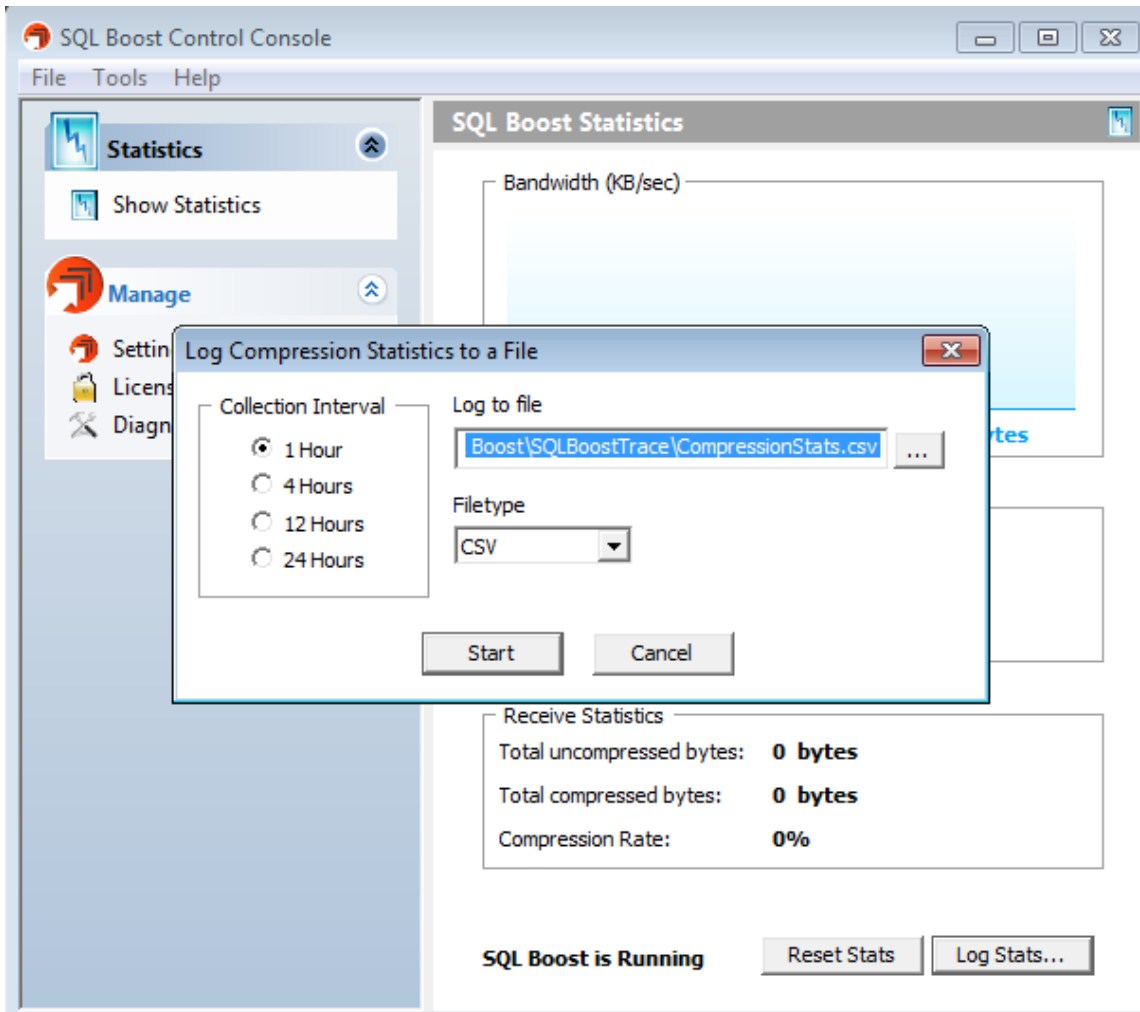
<a href="#">Idera Website</a>	<a href="#">Products</a>	<a href="#">Purchase</a>	<a href="#">Support</a>	<a href="#">Community</a>	<a href="#">About Us</a>	<a href="#">Resources</a>	<a href="#">Legal</a>
-------------------------------	--------------------------	--------------------------	-------------------------	---------------------------	--------------------------	---------------------------	-----------------------

## Configure compression statistics collection

SQL Boost allows you to set the collection interval and file location for your statistics. This information allows you to easily build a report showing the value SQL Boost provides to your organization. This feature also allows you to track network usage for your SQL data traffic, which can aid in current and future bandwidth planning.

Collection intervals range from one hour to 24 hours. You can store the file in CSV, XML, or JSON format and specify a location where you want the file to reside.

To access this feature, on the SQL Boost Statistics dialog box, click **Log Stats ...**. SQL Boost displays the Log Compression Statistics to a File dialog box as shown in the following image.



Click **Reset Stats** to return the compression statistics to the default settings.

Need more help? Search the Idera Customer Support Portal

<a href="#">Idera Website</a>	<a href="#">Products</a>	<a href="#">Purchase</a>	<a href="#">Support</a>	<a href="#">Community</a>	<a href="#">About Us</a>	<a href="#">Resources</a>	<a href="#">Legal</a>
-------------------------------	--------------------------	--------------------------	-------------------------	---------------------------	--------------------------	---------------------------	-----------------------



## Troubleshooting

If you are not seeing any compression statistics in the SQL Boost Control Console, ensure the following:

- SQL Boost was installed under an administrator account.
- Your SQL Server service was restarted after installation.
- You are connecting using the TCP/IP protocol. You may need to create an alias to do this, or simply disable the other protocols.
- If connecting locally, make sure that the shared memory protocol is disabled.
- If connecting from a client that was installed under terminal services, make sure the *Installing Under Terminal Services* section was followed.
- If you have reinstalled SQL Boost, that the machine has been rebooted.
- If you have restarted the SQL Boost Watch service, that your SQL client has been re-launched.
- All client applications that send traffic to SQL Server were re-launched. *Please note* that during testing, any time SQL Boost is started or stopped (via the SQL Boost Control Console or by starting/stopping the SQL Boost Watch service), your client applications must be closed and then re-launched.

SQL Boost also includes a diagnostic tool, which may be helpful in troubleshooting. You can access this tool via the help menu in the SQL Boost Control Console. This diagnostic output includes:

- Which SQL Servers are detected by SQL Boost and the protocols that are enabled for each.
- Whether SQL Boost's client-side functionality is currently enabled on the system, which usually indicates whether the SQL Boost Watch service is started or stopped.

Need more help? Search the Idera Customer Support Portal

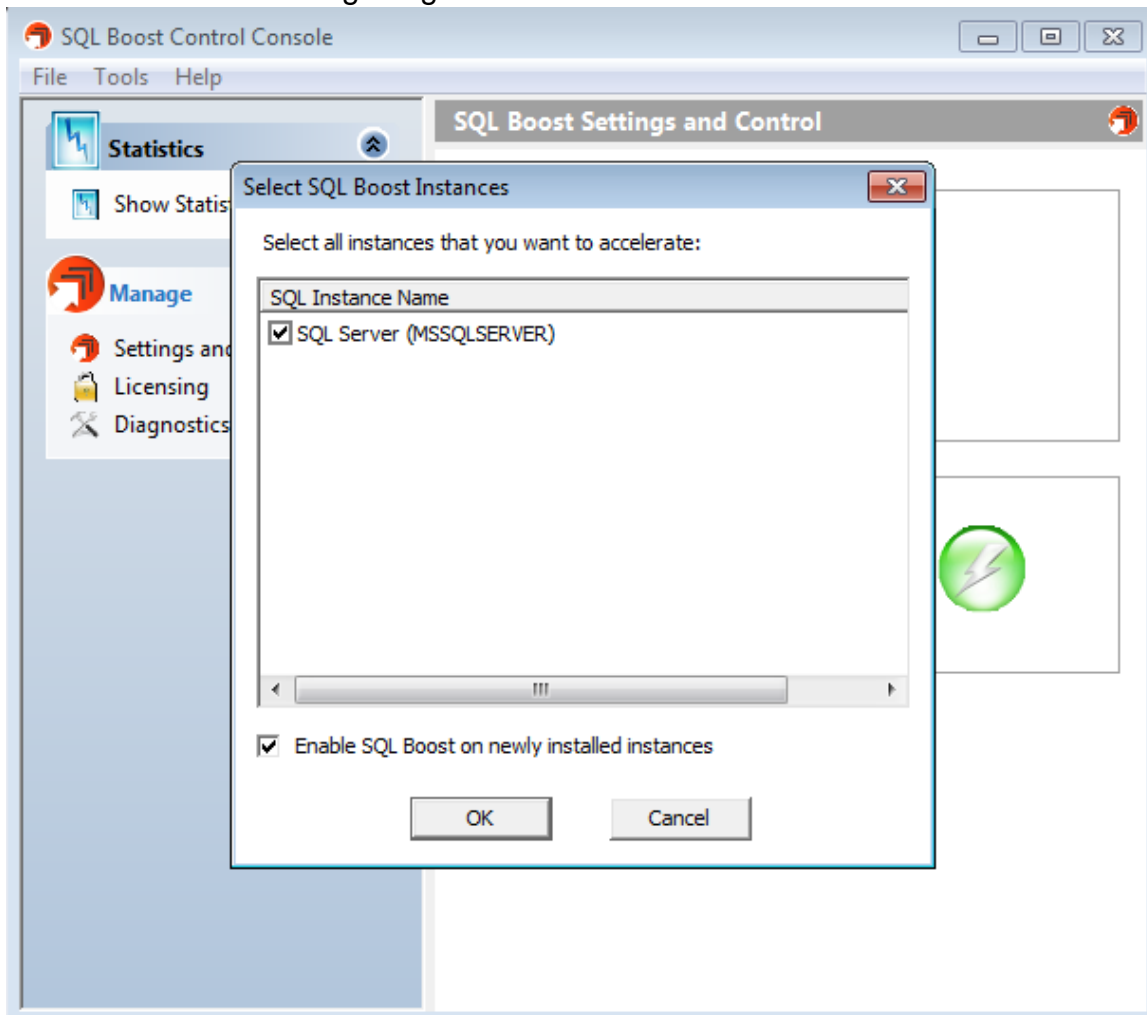
<a href="#">Idera Website</a>	<a href="#">Products</a>	<a href="#">Purchase</a>	<a href="#">Support</a>	<a href="#">Community</a>	<a href="#">About Us</a>	<a href="#">Resources</a>	<a href="#">Legal</a>
-------------------------------	--------------------------	--------------------------	-------------------------	---------------------------	--------------------------	---------------------------	-----------------------

## Manage SQL Boost on your instances

By default, SQL Boost is enabled on all SQL Server instances in your environment. You can also select an option that automatically enables SQL Boost on each newly-installed instance.

### To select a SQL Server instance for acceleration:

1. Open the SQL Boost Control Console, and then click **Settings and Control**. The system displays the SQL Boost Settings and Control window.
2. Click **Configure Instances**. The system displays the Select SQL Boost Instances window as shown in the following image.



3. Check the box(es) of any SQL Server instance on which you want to enable SQL Boost, and then click **OK**.

### Enable SQL Boost on new instances

You can avoid accidentally leaving off a SQL Server instance from the SQL Boost list by enabling the product on all newly-installed instances.

**To enable this feature**, open the Select SQL Boost Instances window, check **Enable SQL Boost on newly installed instances**, and then click **OK**.

Need more help? Search the Idera Customer Support Portal

<a href="#">Idera Website</a>	<a href="#">Products</a>	<a href="#">Purchase</a>	<a href="#">Support</a>	<a href="#">Community</a>	<a href="#">About Us</a>	<a href="#">Resources</a>	<a href="#">Legal</a>
-------------------------------	--------------------------	--------------------------	-------------------------	---------------------------	--------------------------	---------------------------	-----------------------