

MadCap Software

Key Features Guide

Mimic 8



Copyright 2015 MadCap Software. All rights reserved.

Information in this document is subject to change without notice. The software described in this document is furnished under a license agreement or nondisclosure agreement. The software may be used or copied only in accordance with the terms of those agreements. No part of this publication may be reproduced, stored in a retrieval system, or transmitted in any form or any means electronic or mechanical, including photocopying and recording for any purpose other than the purchaser's personal use without the written permission of MadCap Software.

MadCap Software
7777 Fay Avenue
La Jolla, California 92037
858-320-0387
www.madcapsoftware.com

THIS GUIDE WAS CREATED USING MADCAP FLARE.

Key Features

Mimic offers dozens of features to assist you in producing movies. Following are some of the key features. See the online Help for more information about each feature.

- General 4
- Interface 5
- Creation 8
- Enhancement 9
- Single-Sourcing 10
- Output 11



General

Following are some general key features in Mimic.

INTEGRATION WITH FLARE

Mimic can be used for many purposes (e.g., technical support, sales, marketing), but it is especially suited for Flare authors and was designed with those individuals in mind. Therefore, Mimic is tightly integrated with MadCap Flare. This means that it is very easy to start the movie-making process from Flare and to quickly incorporate the finished movie into your output.

INTEGRATION WITH LINGO

One of the easiest ways to translate a Mimic collection or movie is for a translator to open that collection or movie within MadCap Lingo, which is tightly integrated with Mimic. Because of this integration, there is no need to transfer localized files outside of the actual collection or movie, which helps prevent content and formatting corruption. For more information, please refer to the documentation provided with MadCap Lingo.

XML FILE FORMAT

Mimic movie files are XML-based. This means that they can be opened and modified with third-party XML tools.

UNICODE SUPPORT FOR LEFT-TO-RIGHT AND RIGHT-TO-LEFT LANGUAGES

Mimic is fully Unicode capable, making it possible to handle the entire world's Unicode language characters. This includes English, French, German, Japanese, Chinese, Arabic, Persian, Hebrew, double-byte languages, and more.

Interface

Following are some key features of the Mimic user interface.

MULTIPLE DOCUMENTS OPEN SIMULTANEOUSLY

Mimic is unique in that you can have multiple documents open in the interface simultaneously.

E X A M P L E

If you want to work on three movies all at the same time, you do not have to close one of them before working on another. You can have all three open at the same time. You can even "float" and move them so that they are placed side-by-side. If you have access to dual monitors, you can have one item displayed on one monitor and another item displayed on the second monitor.

FLOATING AND DOCKABLE WINDOW PANES

You can "float" window panes and editors, which lets you then click and drag them wherever you want in the interface. A window pane can be attached (or "docked") to the sides, top, or bottom of the program interface.

WINDOW LAYOUTS

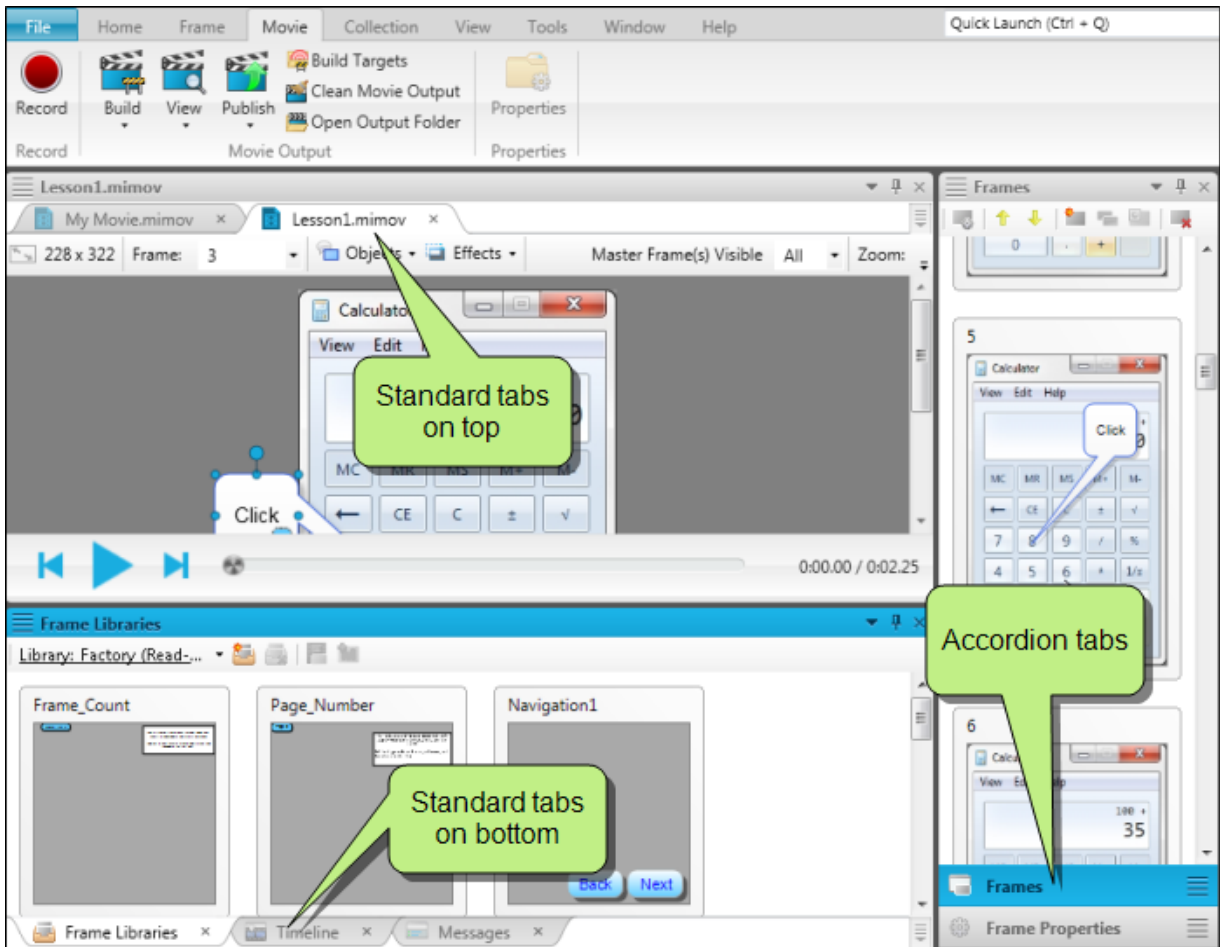
You can save a custom configuration (layout) of your workspace.

TAB OPTIONS

You can choose how to view window panes in the workspace:

- » **Accordion Tabs** Stacks the document tabs below the window pane or editor.
- » **Standard Tabs on Top** Places the document tabs on the top of the window pane or editor.
- » **Standard Tabs on Bottom** Places the document tabs on the bottom of the window pane or editor.

To switch between tab types, right-click in the title bar of the window pane or editor and select a view.



QUICK ACCESS TOOLBAR

You can create a Quick Access toolbar at the top of the workspace to display options that you use most often. When options are added to the Quick Access toolbar, they are easily accessible, regardless of the ribbon that is open.

By default the Save, Save All, Undo, and Redo buttons are already added to the toolbar. However, you can add others as well.

QUICK LAUNCH BAR

The Quick Launch bar allows you to search for any Mimic file or command. It is located in the upper-right corner of the interface. You can press **CTRL+Q** on your keyboard to move focus to the Quick Launch bar so you can begin typing.

ENHANCED UNDO AND REDO

Mimic's undo and redo functions are enhanced as follows:

- » **Unlimited** You can undo or redo an unlimited number of times, back to the last time you opened the document, even after you have saved it.
- » **Multiple Buffers** Each document in the Mimic interface has its own Undo/Redo buffer. This means that you can undo actions in one document and then switch to another document and undo actions specific to that file.

Creation

Following are some of the unique movie creation features available in Mimic.

COLLECTION-ORIENTED WORKFLOW

In addition to creating standalone movies, Mimic works with the concept of collections. Each collection can contain several individual movies. This allows you to easily and quickly link smaller movies together to form larger ones.

RECORDING MODES

When you record a movie, you can select whether to capture images automatically, manually, or with full-motion video (FMV).

POWERPOINT IMPORT

In addition to creating a movie by recording your actions, you can also create a movie by importing a Microsoft PowerPoint presentation.

Enhancement

Following are some of the unique movie enhancement features available in Mimic.

INTERACTIVE LIVE PREVIEW WITH SYNCHRONIZED AUDIO

The Movie Editor includes an integrated play bar and buttons that allow you to review any part of a frame or movie, viewing it directly in the Movie Editor. In addition, the audio associated with the movie or frame is synchronized with the preview.

KEYFRAMES FOR ANIMATING OBJECTS

Keyframes indicate points within a frame where an object will transition from its current state to a new state. In other words, whenever a keyframe transition happens, the object's properties change. Movies that include keyframes show seamless object transitions from one state to the next.

ANIMATED TYPING BOXES

Not only can you add boxes for users to type input during a movie, but you can also add animated typing boxes automatically or manually to movie frames. Animated typing boxes allow users to watch the typing occur before their eyes.

INPUT TYPING BOXES

If you want users to enter input into a particular movie frame, you can add an input typing box. You can also add actions to the input box, such as displaying a feedback bubble when the user enters the correct text.

EFFECTS

You can quickly apply several different kinds of effects to objects in your movies. These include effects that let you highlight an area by applying opacity, blur, or gray scale to everything around it.

VISUAL TIMELINE

Use Mimic's visual timeline to synchronize objects in a movie frame. You can specify how long each object should be displayed in a frame, including the specific moment when it should be shown. You can also switch between the default view of the current frame or the entire movie.

Single-Sourcing

Mimic has numerous single-sourcing features that save you time and effort by letting you create content once and reuse it in multiple places. This includes the following features.

CONDITION TAGS AND TARGETS

Condition tags are a way to mark movies, frames, or objects that you want to include in some outputs, but exclude from other outputs. They work in conjunction with targets, which are separate instances of an output type.

FRAME LIBRARIES

A frame library lets you store often-used frames so that you can quickly insert them into movies later.

MASTER FRAMES

Master frames let you easily and quickly apply certain elements (e.g., buttons, image objects) to many frames at once. In addition, if you need to make a change to any of those elements, you only need to do so in the master frame; as a result, all frames using that master frame will automatically display the changes.

PALETTES

After you create a movie, you can add various types of objects (such as shapes, lines, and cursors) to the individual frames. A palette is an element that lets you store objects for later use. You can also link to external palettes, which lets you access palettes saved by your teammates.

VARIABLES

In addition to adding regular text to frame objects, you can also insert variables (reusable text). Not only can you create variables in Mimic, but you can also link to variables that already exist in a MadCap Flare project.

Output

Mimic lets you generate movies in web-based and print formats. Following are the output options available in Mimic.

WEB OR DESKTOP OUTPUT

You can create movie output that can be accessed from a web server or locally on a desktop with the HTML5 format (WebM and MP4 files).

- » **HTML5** HTML5 is a movie format that uses the <video> element instead of <object> and can be viewed on any browser that supports HTML5 content. Most newer browsers support the <video> element, including Internet Explorer 9, Firefox, Opera, Chrome, and Safari. Older browsers such as Internet Explorer 8 do not. HTML5 can also be used to generate a standalone video file to play your movies on an iPhone or upload them to YouTube or Vimeo.

PRINT-BASED OUTPUT OPTION

You can create print-based movie output with the Adobe PDF format. This output format is ideal for distributing print versions of your movies. You can also use this format to plan future movies or review existing ones.

- » **Adobe PDF** Short for "Portable Document Format," PDF is an open standard format for electronic documentation exchange invented by Adobe. PDF files are used to represent a two-dimensional document in an device- and resolution-independent fixed-layout format.

BUILD OUTPUT AT THE COMMAND LINE

You can easily generate movie output from the interface. However, you can also build movies from your operating system's command line. Using this method, you do not have to open Mimic at all. The best way to use the command line feature is to create a batch file with the necessary commands in it. Then you can use a scheduling tool (such as the Task Scheduler utility in Windows) to run the batch file automatically whenever you want.

UPLOAD MOVIES TO YOUTUBE AND VIMEO

If you generate non-interactive output using the HTML5 format, you can upload the video to YouTube or Vimeo.

APPENDIX

PDF Guides

The following PDF guides are available for download from the online Help.

Getting Started Guide

Key Features Guide

Movie Creation Guide

Movie Editing Guide

Movie Generation Guide

Shortcuts Guide

Touring the Workspace Guide

What's New Guide

