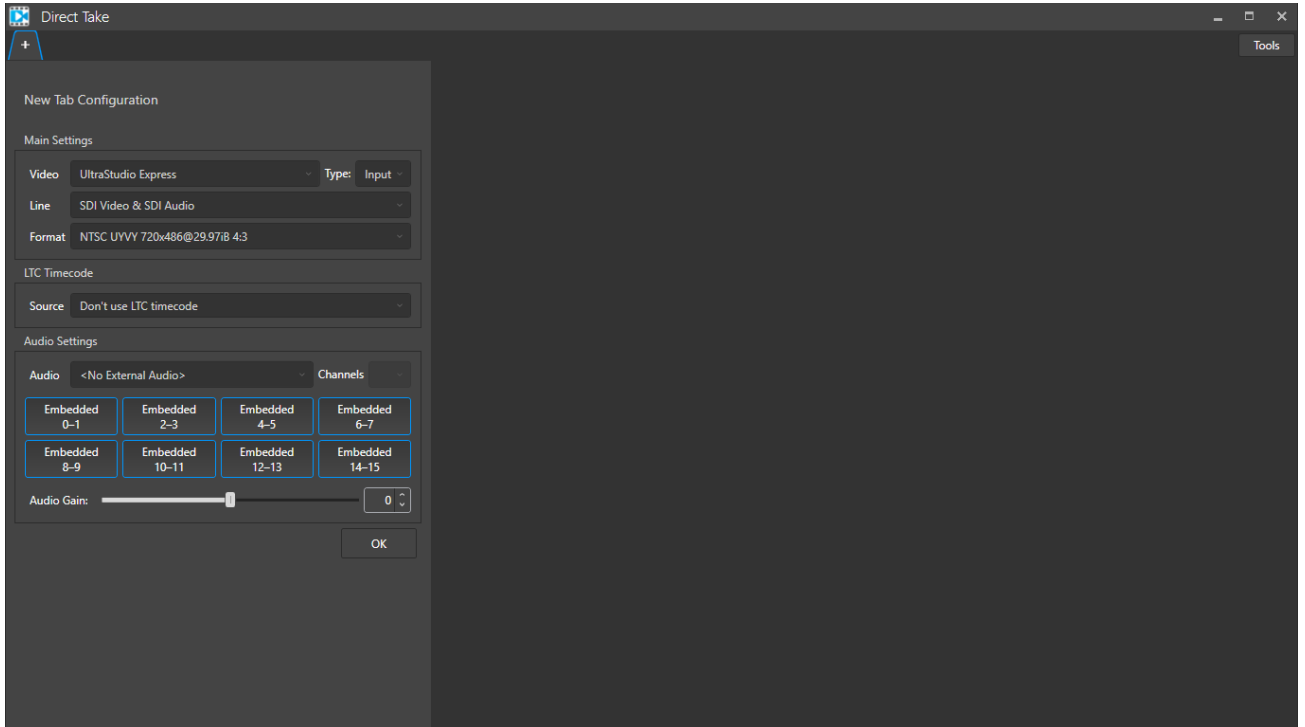


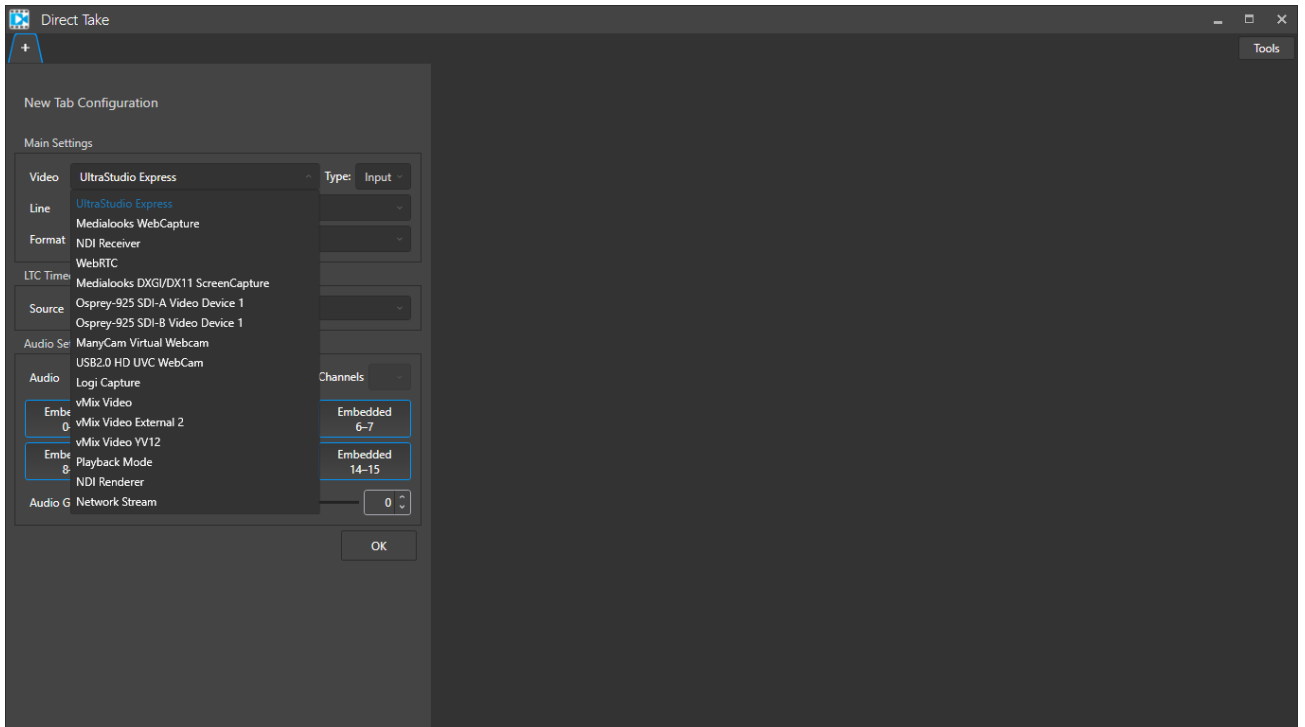
# Direct Take User Guide

## First run of the application



Here you can choose what source to use and in what mode.

The available video sources are listed in the “Video” list. The list includes input and output devices, playback-only mode, and network streams:



Available mode for the source are listed in the “Type” list:

- “Input” to work in the “Capture” mode where you can record video from the source
- “Output” to work with a playout device or in the “Playback” mode with a playlist.

Other settings vary depend on the selected video device/source and the selected “Type”.

To put it simple, with “Input” you have a mode for encoding from the selected source, with the “Output” you have a playlist mode.

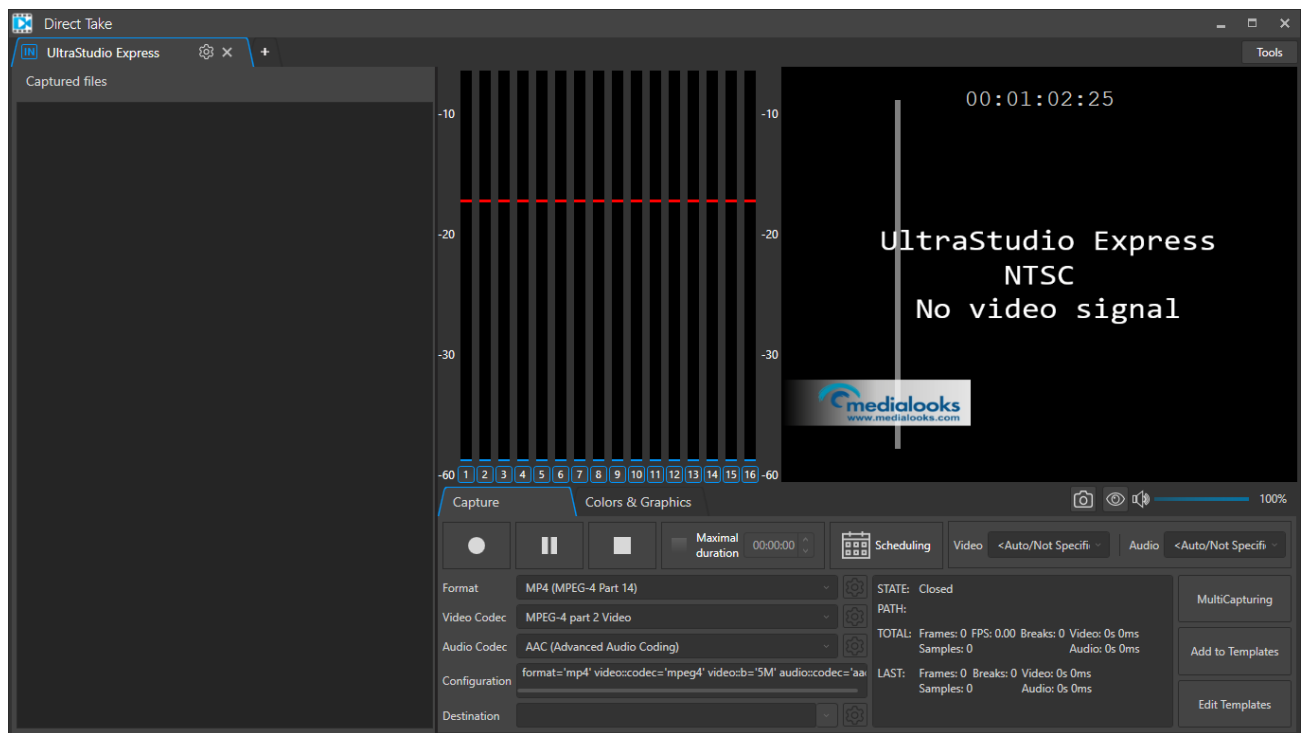
For the “Input”, you can specify external audio source and specify its audio channels configuration with “Audio settings”.

Press “OK” to add a new tab to the application.

Once a new tab is added, you can add a new tab with the “+” tab.

To change parameters of a device/source you should click the gear button next to the tab name.

## Input mode



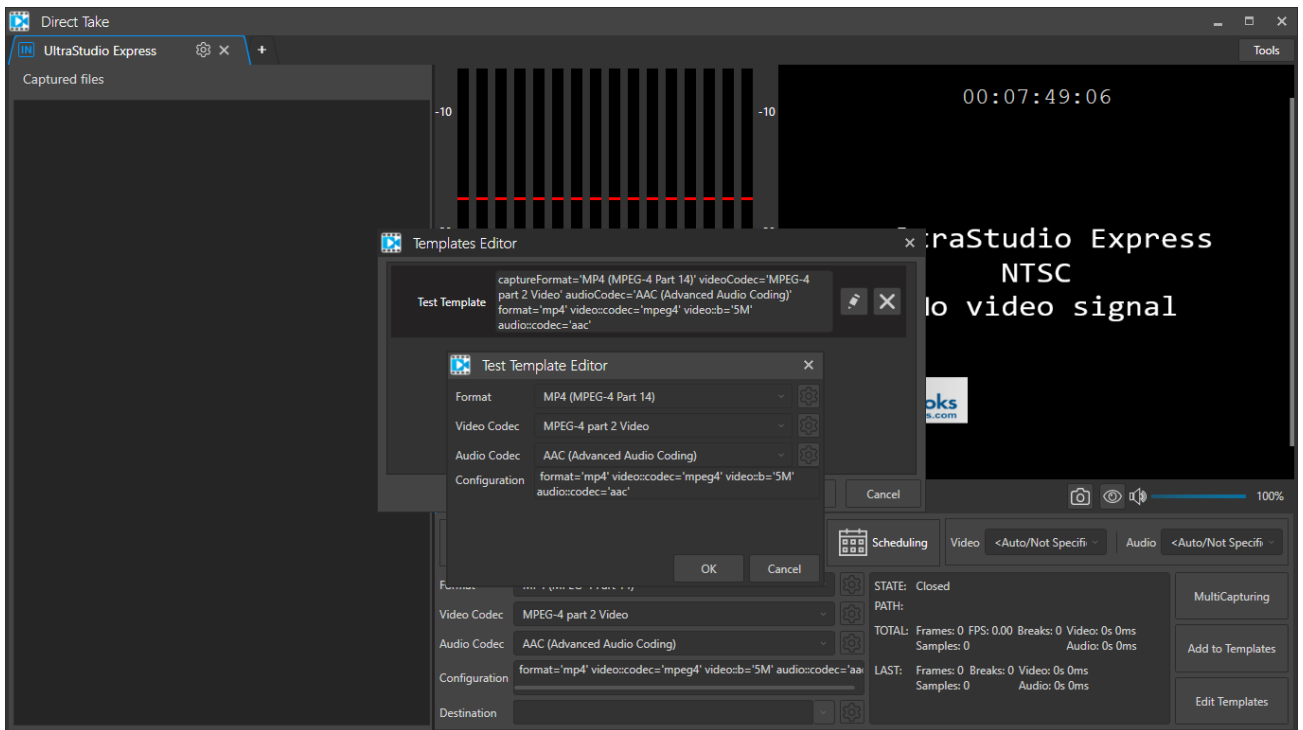
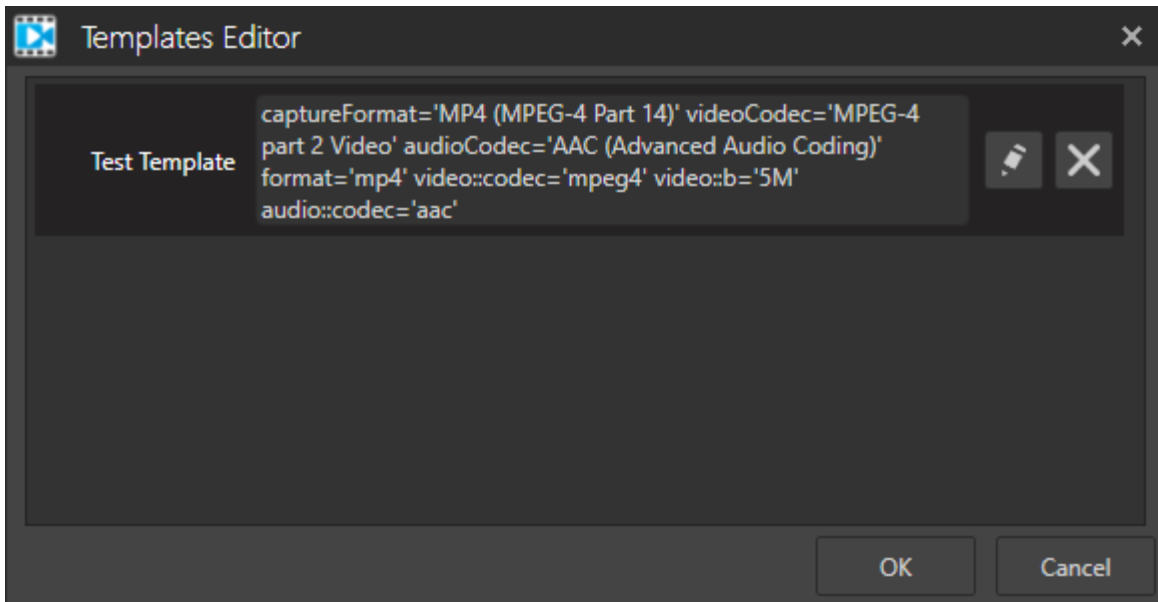
The list of “Captured files” contains all the files that were recorded from the source.

With the “Format”, “Video Codec”, and “Audio Codec” lists you can set a recording configuration.

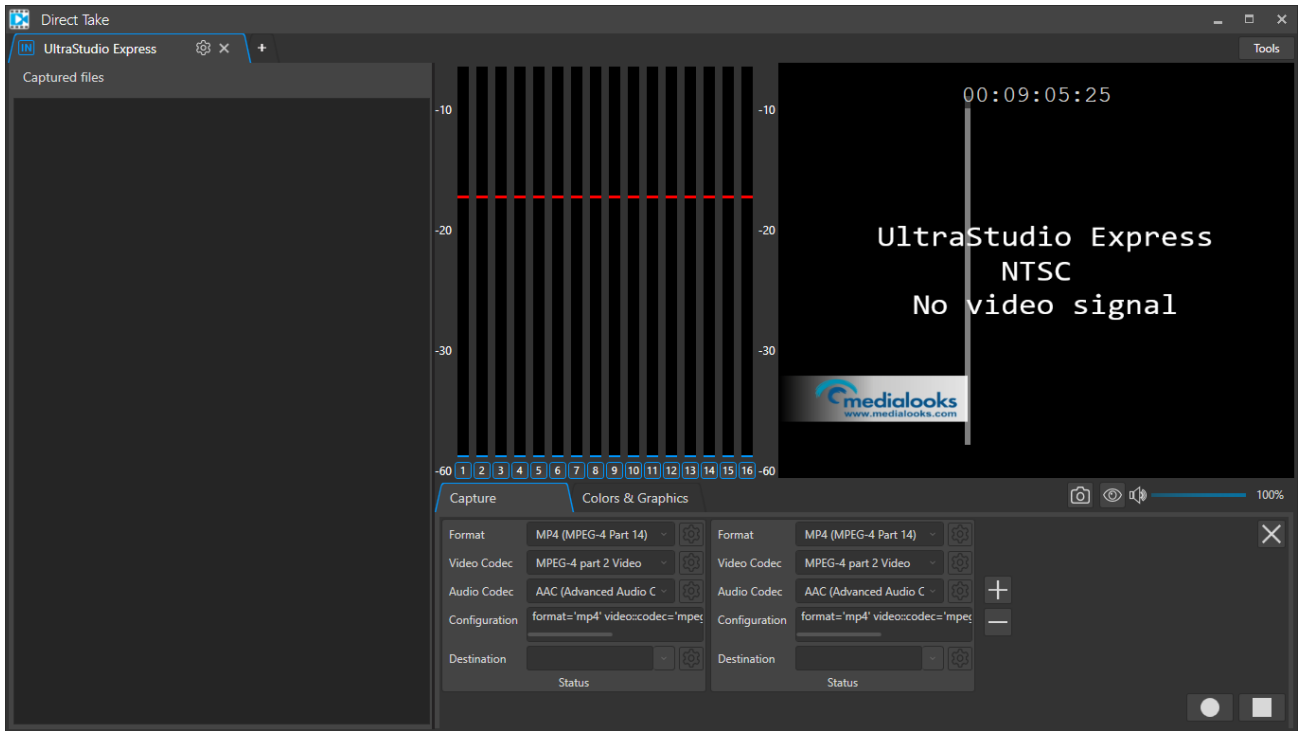
To start a recording, you should click the “Record” button. If the destination is not specified the encoding starts recording to a default folder (“Documents”). At the right from the encoding configuration there is a statistics field where you can control the current encoding process – how many frames were encoded, are there any drops or breaks during the recording.

If you have a specific encoding configuration, you can save it as a template with “Add to Templates” button. Once saved, the template is listed in the “Format” list.

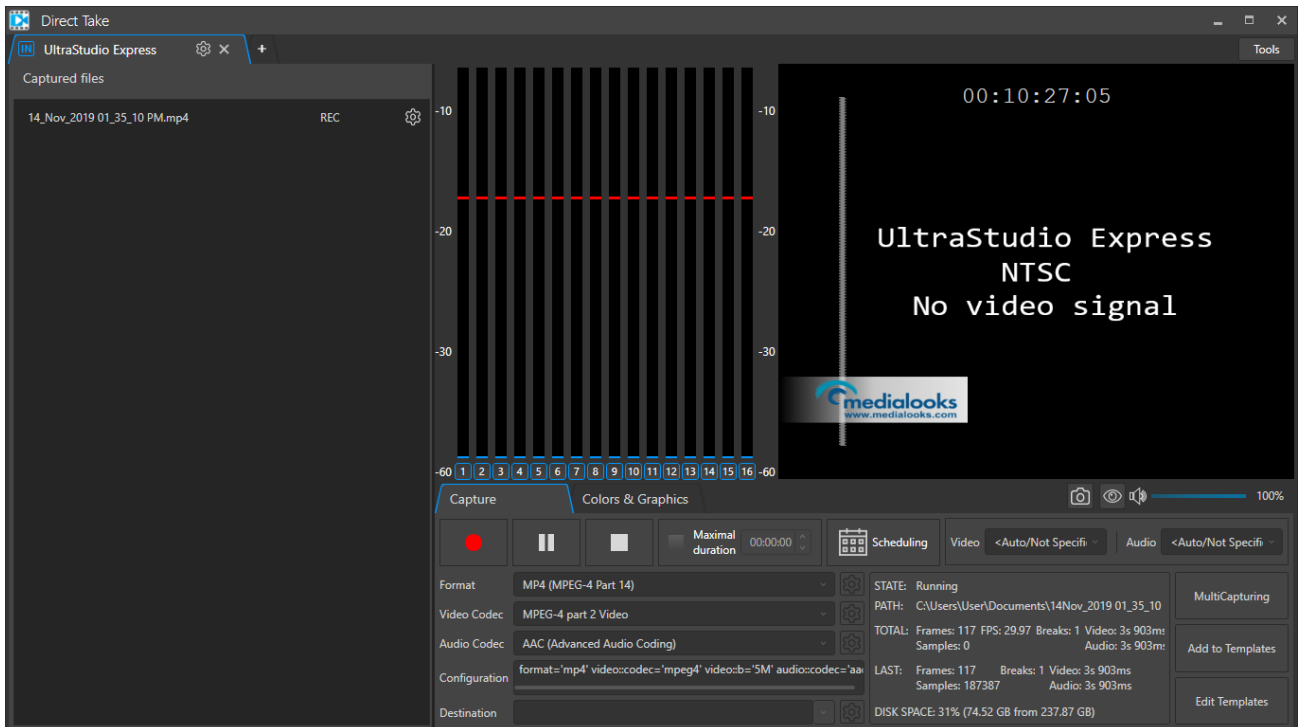
The “Edit Templates” button opens a list of the current templates where you can modify them or remove some templates:



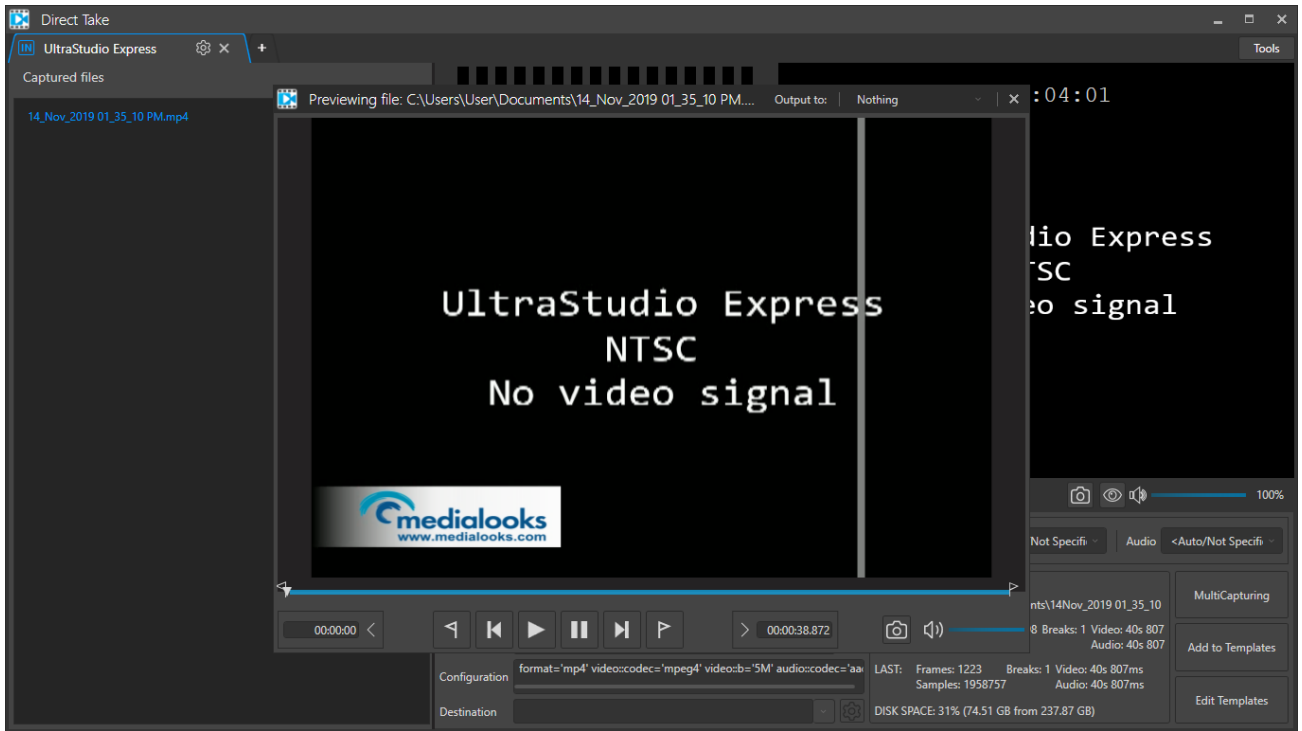
With the “MultiCapturing” button, you can record the source video into several destinations at the same time synchronously:



Once a recording is started, the file (if you record to a file and not stream to network) is listed among the “Captured files”, where you can preview the result during the recording or after the recording is over.



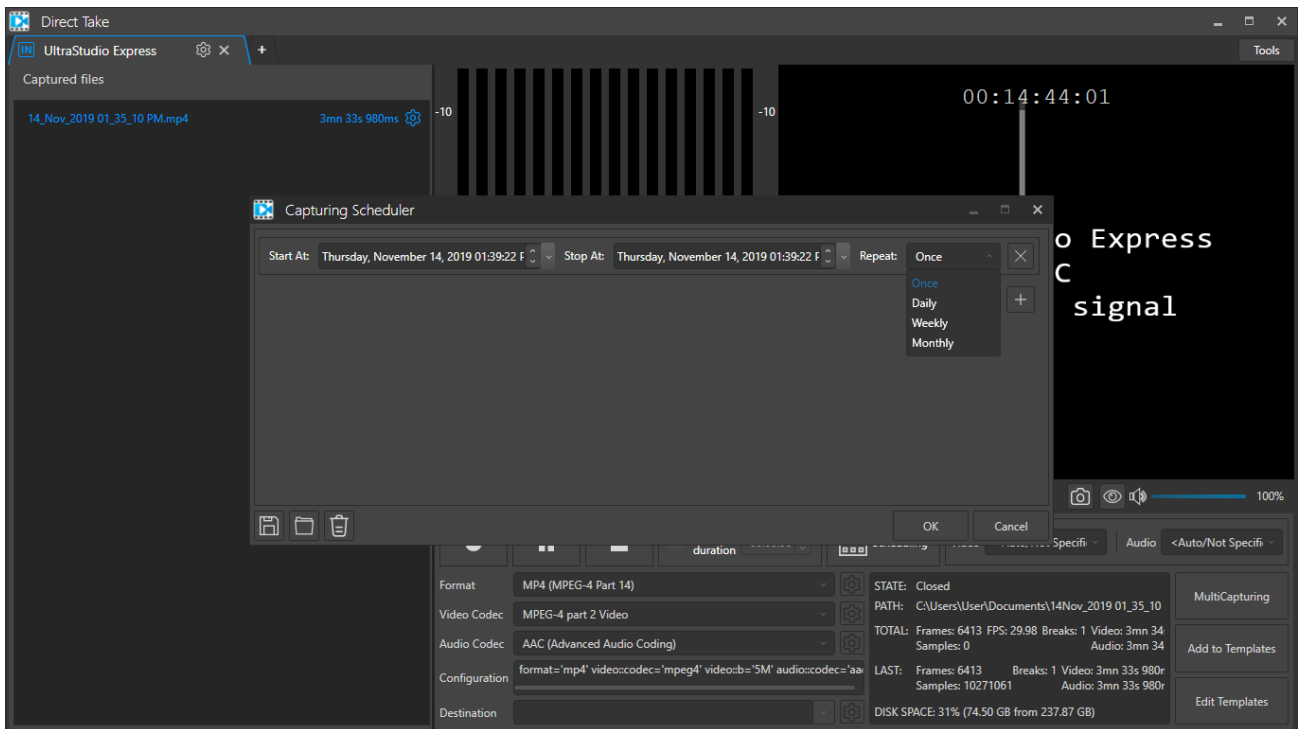
Press the gear button of an item to open its preview window:



You can convert input video and audio to desired resolution. To do so, select the required video format (like HD1080 30p) in the “Video” list below the main video preview. For audio you should use the “Audio” list.

With the “Max duration”, you can limit the encoding files duration. Once enabled, the resulting files are of the same duration.

With “Scheduling”, you can specify a schedule for the recording:

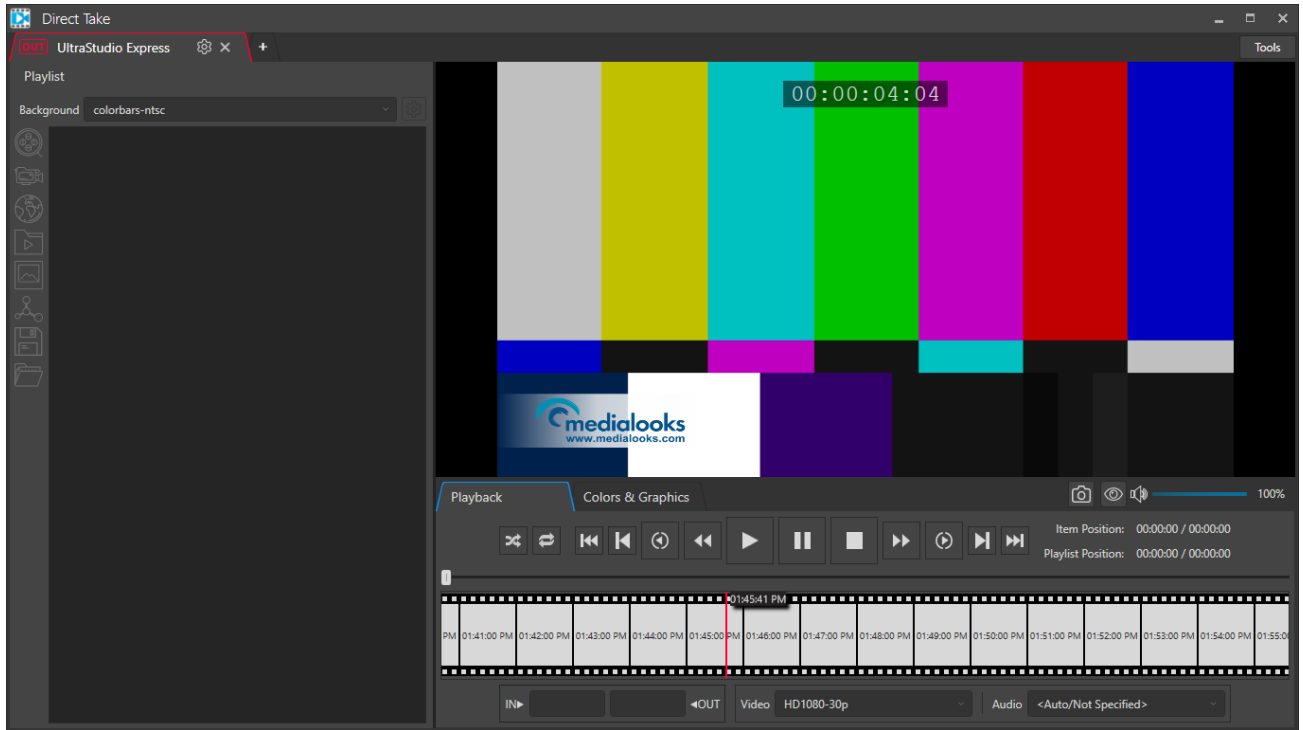


Set a start time, a stop time, and a repeat behavior. You can save and load a schedule in this menu.

Once specified, the recording starts at the planned time, if the recording is not running at the specified time.

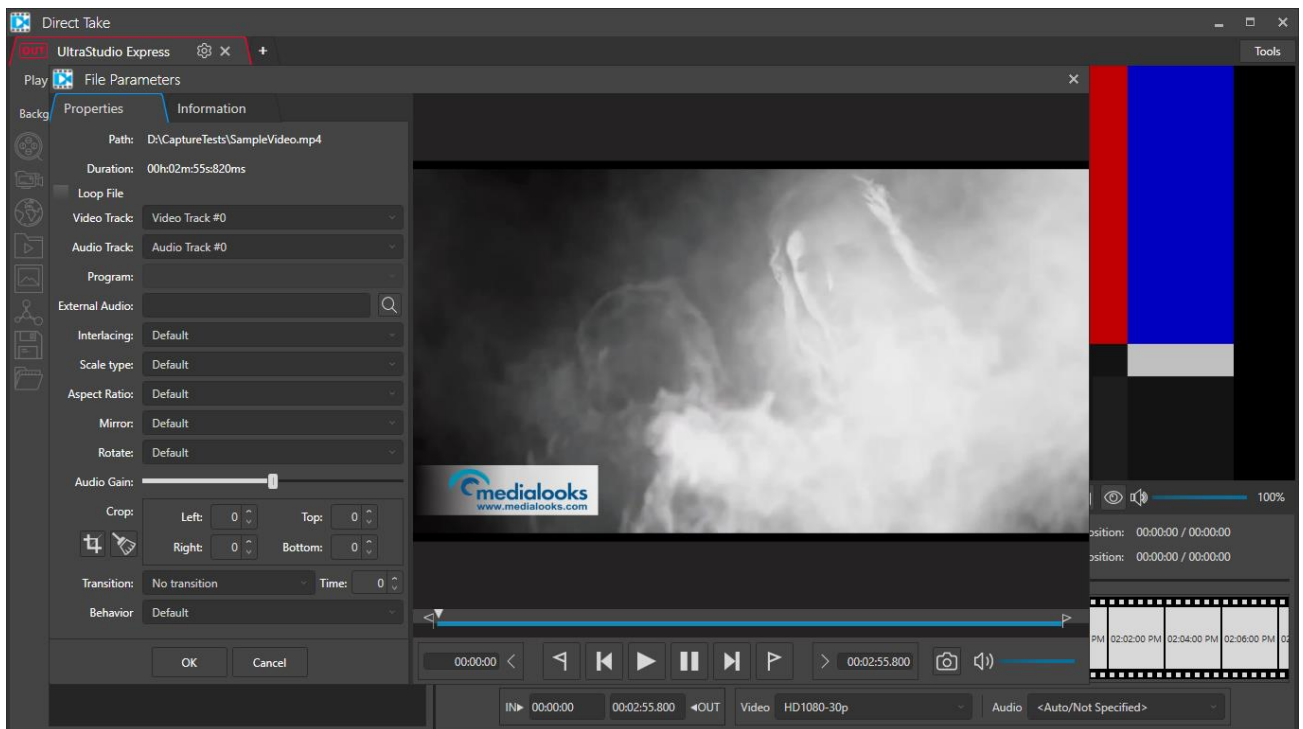
The “Colors & Graphics” tab will be described below.

## Output mode



In this mode, you can create and manage a playlist made of files, network streams, live sources. You can save a configuration of the playlist and load it later.

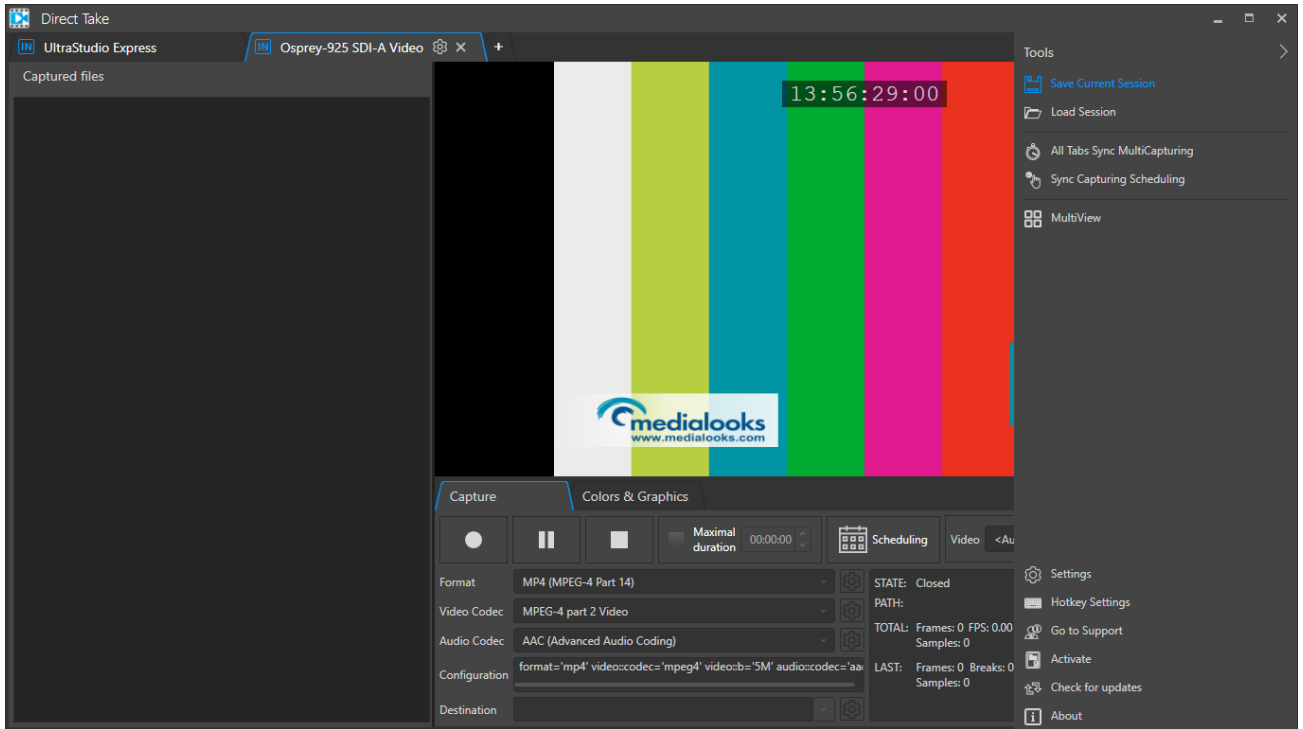
Each item of a playlist might be separately previewed and configured – to open settings of an item, press the “gear” button at the right of the item name.



Back to the playlist itself, you can control its playback using controls of the “Playback” tab: play, pause, stop, fast forward, frame by frame playback, etc.

Like in the Input, you can convert the playlist to a specific video and audio format with the “Video” and “Audio” lists at the bottom of the “Playback” tab.

## Tools

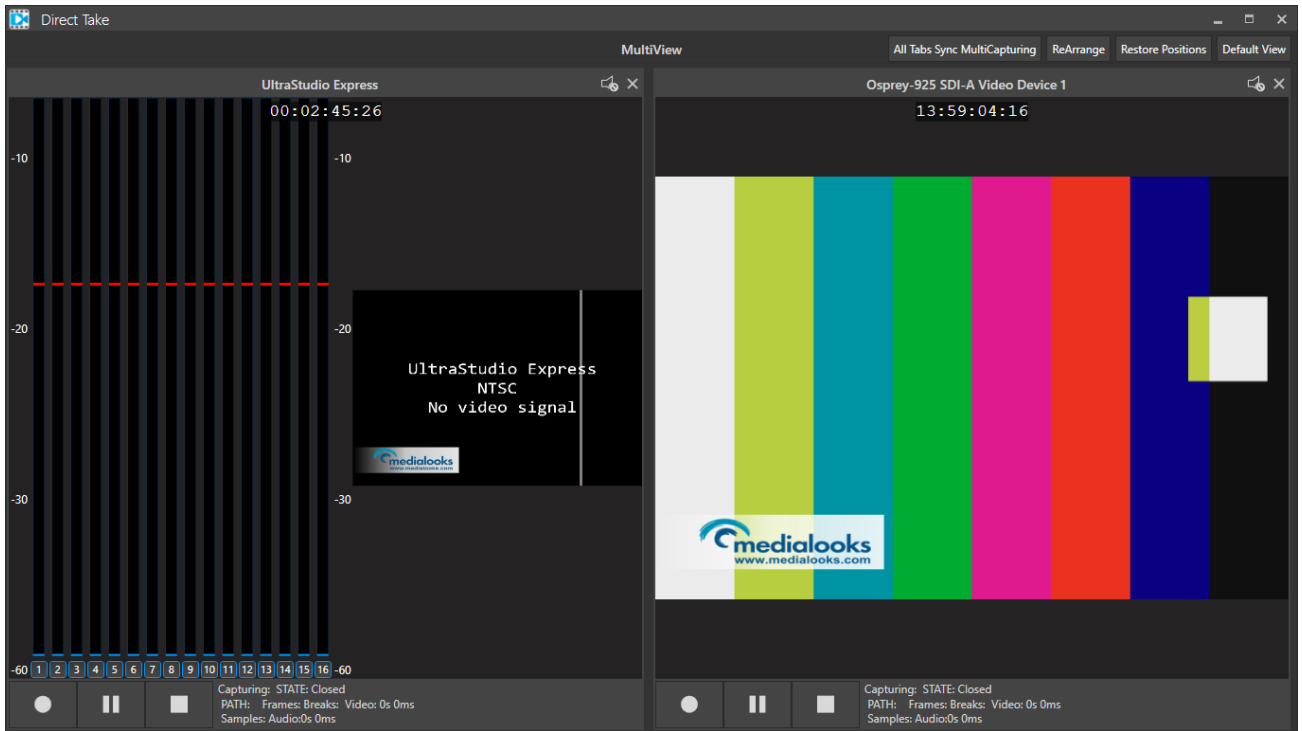


Here you can save and load the whole configuration of the application (tabs, settings, etc.)

“All Tabs Sync MultiCapturing” makes all the tabs in the “Input” mode start recording at the same time. Once started, you can stop the recording in the synchronous way (if this is specified in the “Settings”).

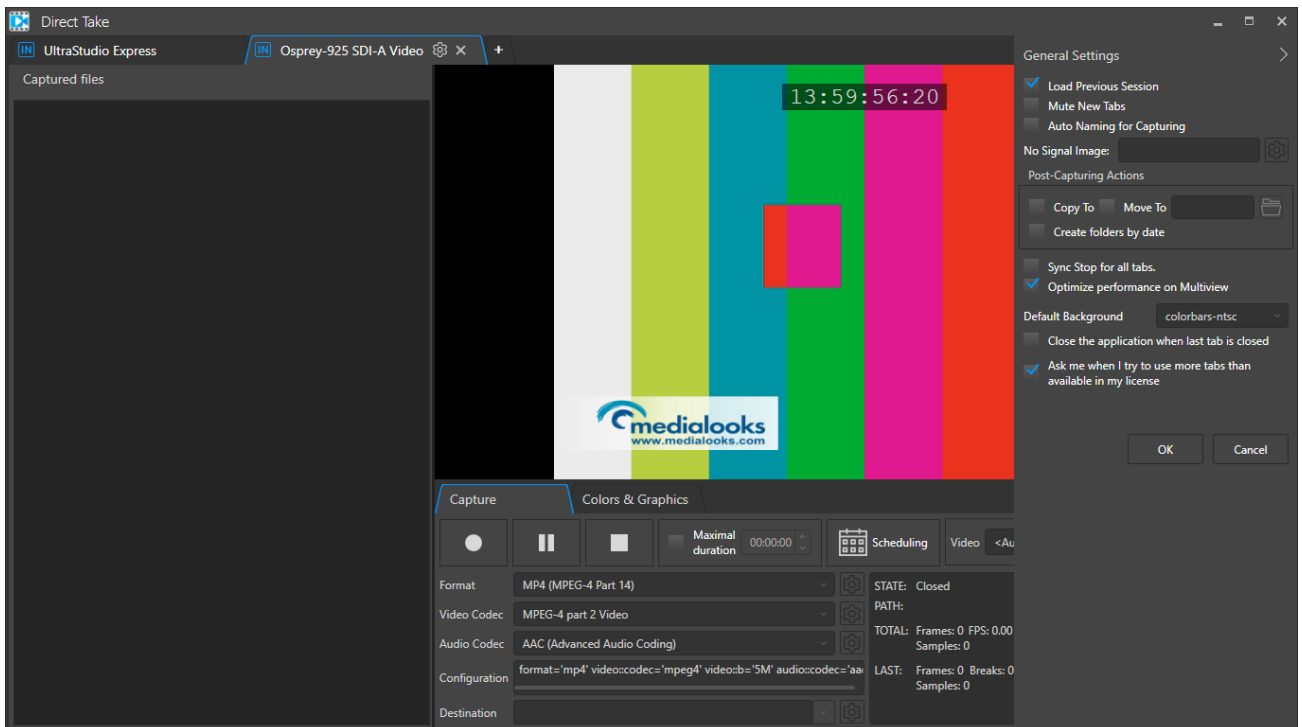
“Sync Capturing Scheduling” opens settings to plan the synchronous encoding for all the input sources.

“Multiview” shows all the active tabs with a shorten control:



Here you can control playback or recording (depends on the type of tabs).

“Settings” opens a default setting of the application:



“Load Previous Session” automatically loads the last session of the application when you start the application.

“Mute New Tabs” disables audio preview for newly added tabs.

“Auto Naming for Capturing” uses default names for recorded files.

“No Signal Image” sets an image that is used instead of the “No Video Signal” when there is no video on the input.

“Post-Capturing Actions” specify what should be done after the recording is over. You can copy or move the resulting files to the specified folder. If “Create folders by date” option is enabled, in the specified folder new subfolders with date are created.

“Sync Stop for all tabs” enables a possibility to stop multi-tabs recording synchronously.

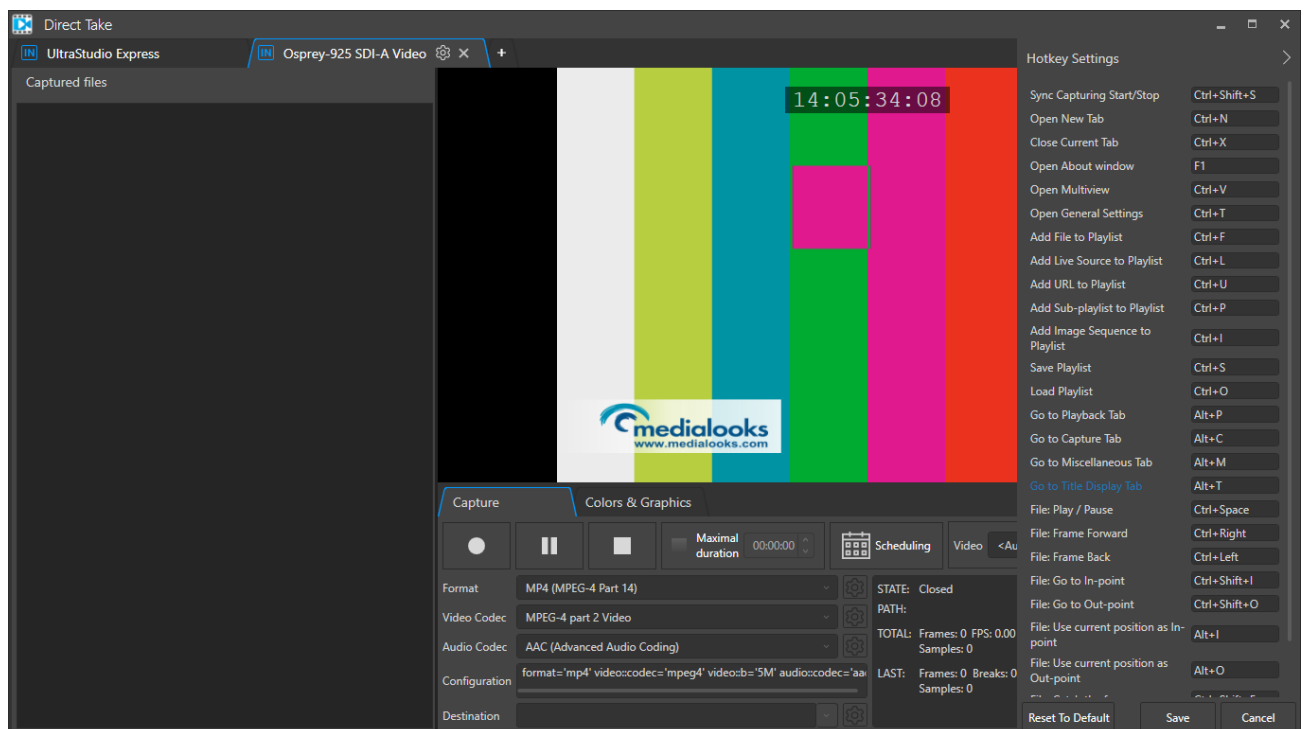
“Optimize performance on Multiview” is used to reduce the overall CPU usage for the Multiview mode.

“Default background” sets a background for new tabs of the Output type.

“Close the application when last tab is closed” does what it says ☺

“Ask me when I try to use more tabs than available in my license” shows you a notification if you use more tabs than it is specified in your actual license.

“Hotkey Settings” is a place where you can specify hotkeys:

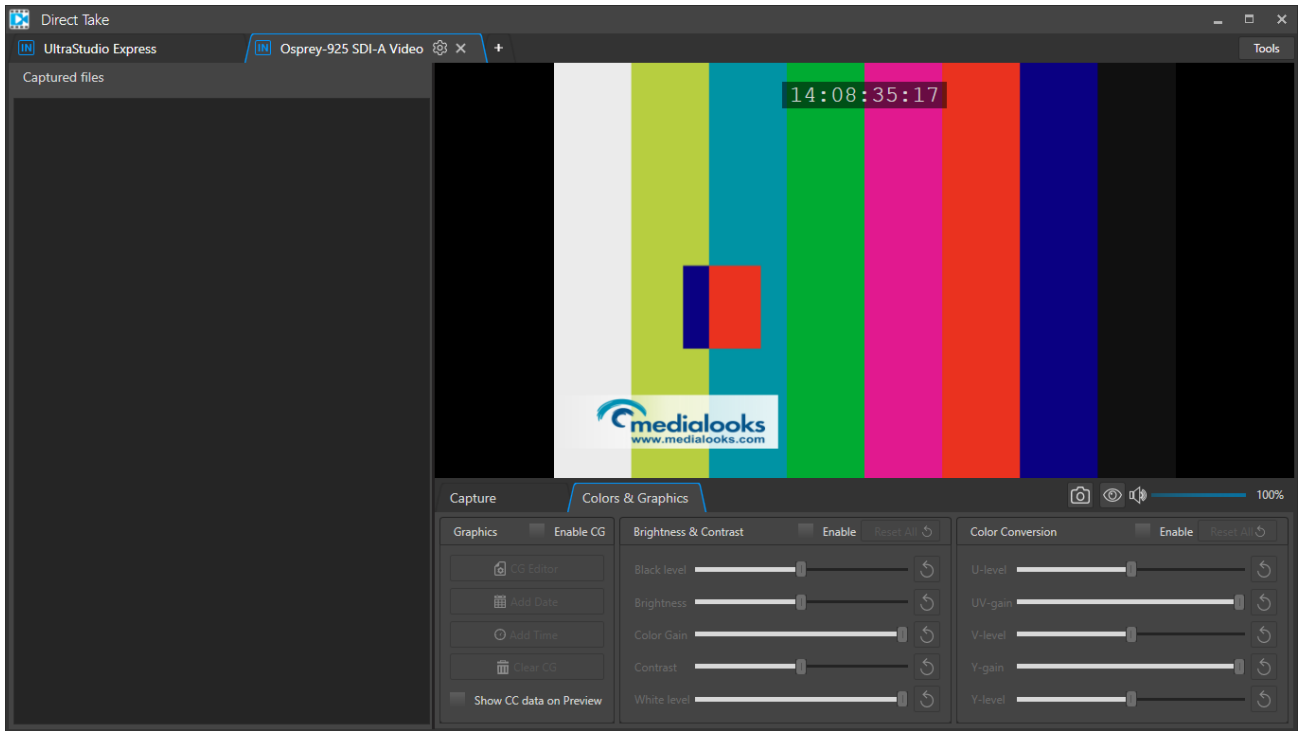


“Go to Support” opens a support portal

“Activate” is a place where you activate your license key

“Check for updates” and “About” do what it says ☺

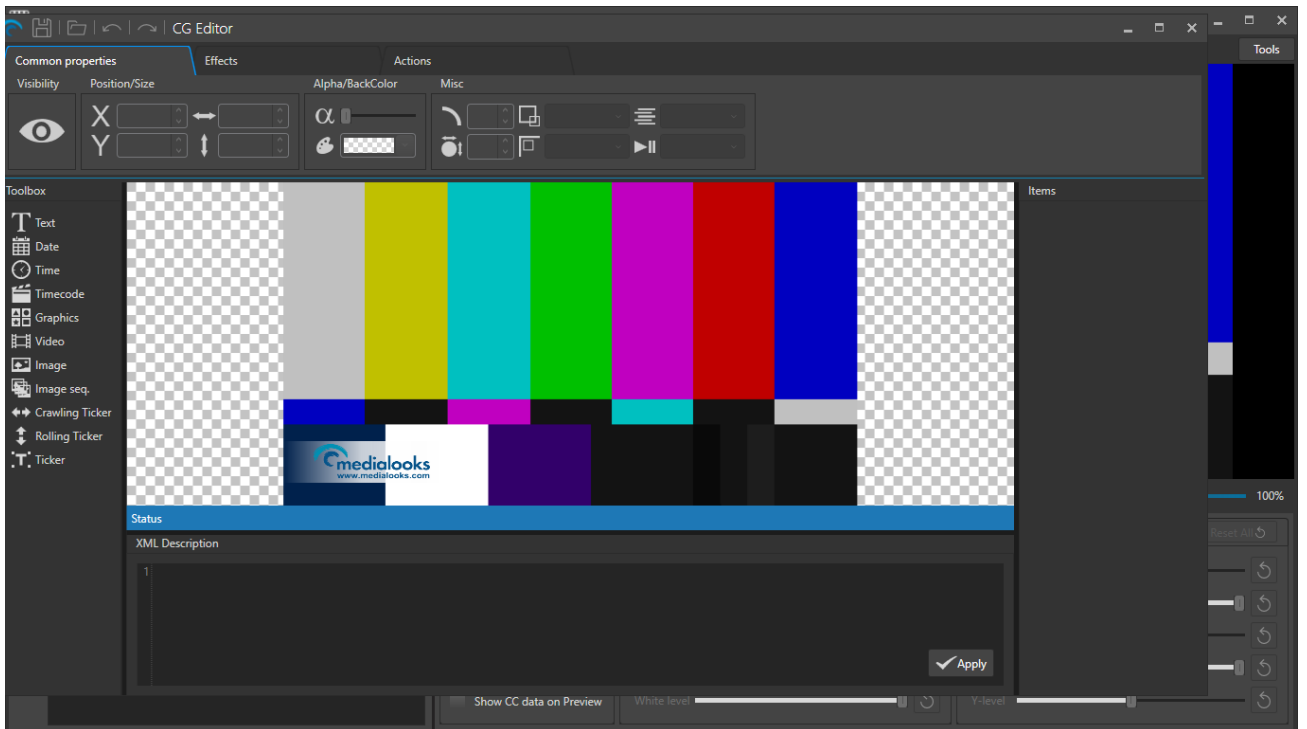
Colors & Graphics



Here you can adjust brightness, contrast and add basic color correction to your video.

By “Enable CG” you add a character generator plugin to your video.

The “Graphics” part contains buttons to clear the current overlay (“Clear CG”), add date and time overlays (“Add Date”, “Add Time”), and CG Editor where you can design your own overlay configuration:



Drag-n-drop items from the toolbox, locate them on the preview and set required settings. The changes are implemented on the resulting video immediately.