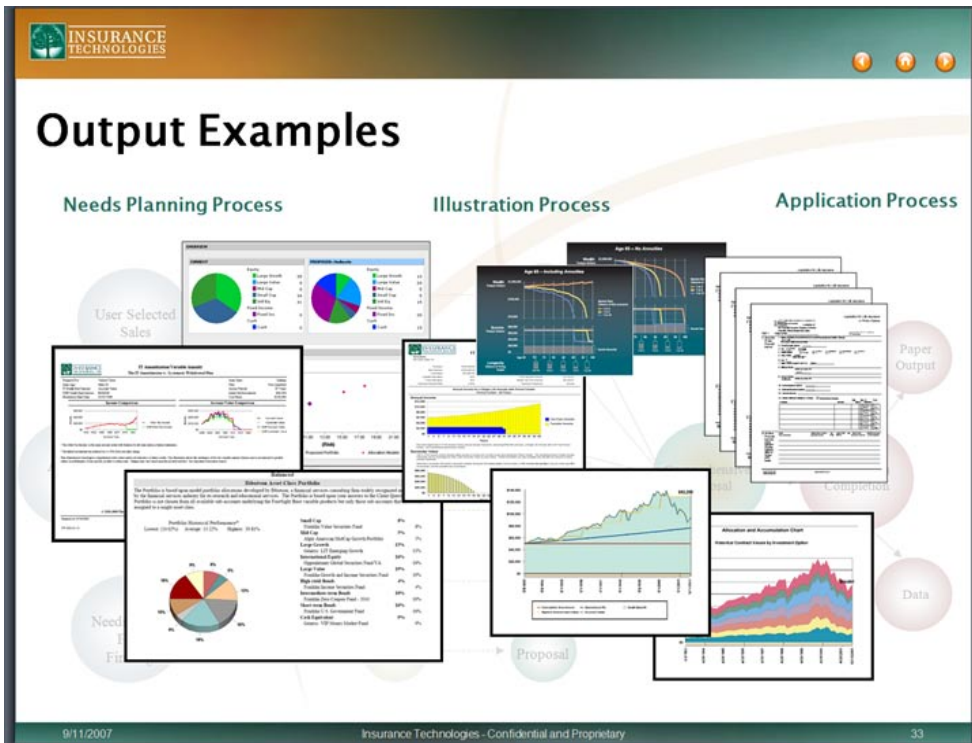


# By using Nevron Charts, we have been able to meet our customer's most stringent requirements

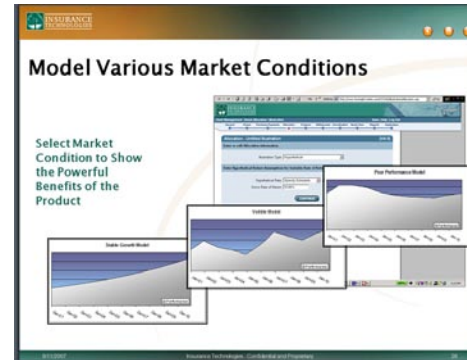


**Insurance Technologies LLC** is a global leader in providing point-of-sale software to the insurance, financial services and brokerage industries. Our award-winning product, ForeSight™, supports the presentation of Life, Annuity, Health, Mutual Fund, Critical Illness, DI, LTC and is considered to be the leading Insurance illustration software in the market today. Simply put; ForeSight™ users sell more.

Project Industry: Financial Services  
Project type: Web, Desktop, and Mobil Web.



ForeSight™ is an insurance point of sale system which encompasses Annuity, Life, Long Term Care (LTC), and Disability Income (DI), for example. Our biggest challenge when producing graphs is producing them for the Financial Services market. Product manufacturers will include many different benefits in their products and they usually like to illustrate point-in-time scenarios. Additionally, they will include other requirements such as special shading, labels, non-standard start and end points, and daily data points. By using Nevron Charts, we have been able to meet our customer's most stringent requirements.



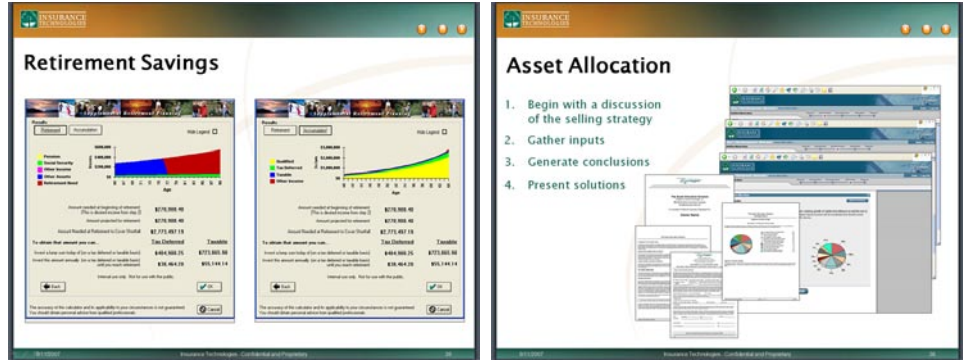
## Why Nevron?

We have been using Nevron Chart (ActiveX and .Net) for several years. When we expanded our development efforts to .Net 2.0, we decided to conduct a new component comparison to find a tool which would best fit our new architecture. After comparing license costs, functionality, ease of development with technical support on numerous free-ware controls, controls with reduced functionality, and full featured controls, Nevron products were well ahead of the competition, with their .Net Vision offering.

Nevron is one of the few companies I reviewed that provided an enterprise license that covered our web/desktop deployment needs with a single royalty-free distribution license. This offering was one of the most important factors in deciding to purchase the component. Many other companies license their web and desktop components separately. Once you are able to decipher a competitors license agreements, you can find yourself paying thousands of dollars in licensing fees for a component that provides similar or less functionality than Nevron Chart.



The chart control is a breeze to program. Developers can start producing charts, both web forms and WinForms, within hours. Additionally, with all of the project samples provided with the control and the code generation capabilities included with the samples, developers can look behind the scenes to see how certain aspects of the charts are created. This in itself reduces the chart creation learning curve.



Nevron Chart's selection of chart types and styles are outstanding and surpass their competition in many regards. We produce sophisticated financial charts, but we have only scratched the surface of what this control is capable of doing. I can't wait to see if Nevron does anything with Microsoft's Silverlight!

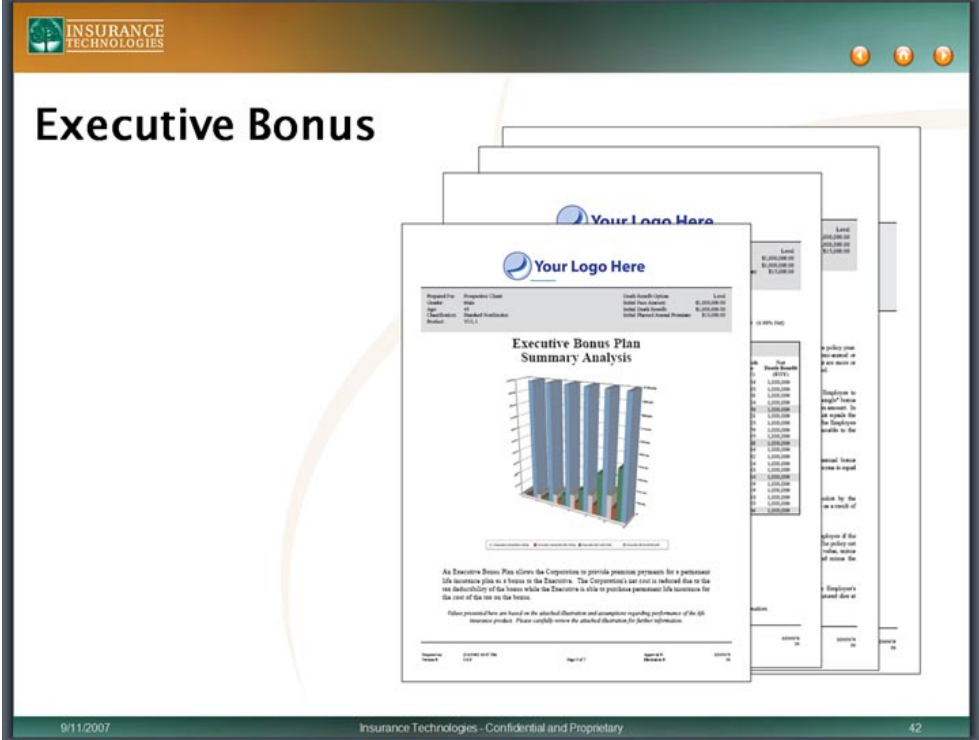
Lastly, Nevron's customer support is superb. Nevron has always provided top notch examples, explanations, and code samples for the more elusive aspects of complicated graphs. Nevron Technical Support has a quick turnaround time on any issue. It is difficult to find support like this from any vendor.

Thanks,  
Kevin Hendricks  
VP, Product Development

Insurance Technologies LLC

**Solution Highlights**

We are strictly a Microsoft Shop using Microsoft solutions. We have used Nevron Chart in all of our solutions starting with DevStudio 5 using ActiveX controls. Currently, we are using .Net Vision in the .Net 3.0 Framework.



Presently, we bind all of our charts to business objects and do not bind them to a database. If we did, the database would be MS SQL Server.

We usually have a few developers work on chart solutions. From time to time, those developers are busy with other products and a new developer will need to incorporate the charts into their own projects.

Development time on the charts can take a half an hour to a few days depending on the complexity of the chart.