



•rayNET



RayPack[®]

Packaging for a WISer generation

RayPack is part of RaySuite.



Top Benefits

Economical advantage guaranteed

- Fair pricing policy with irresistible offers for early birds & migrations
- Substantially accelerated migration projects reduce costs
- Know-how conservation & transfer in single-source project files

Packaging as easy as 1-2-3

- Repackaging with the fastest capture-engine on the market
- Full-service editor for MSI-based package formats
- Generation of classic (e. g. MSI, MST, MSP) and virtual package formats (e. g. App-V, ThinApp, SWV)
- Intelligent modification markup extends the wealth of packaging experience

Minimal setup time

- Maximal scalability of packaging infrastructure
- Intuitive usability provided by our highly modern user interface
- Profile-based settings for task-specific standards

End-to-end Application Lifecycle Management

- Fully integrated within the Unified Data Concept (UDC) of RaySuite
- Sustainable productivity in durable IT landscapes
- Snug interconnections to typical third-party solutions for inventory, asset analysis and software deployment

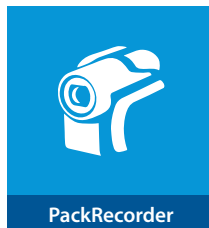
An enterprise IT department

has to face many changes nowadays: migration to Windows 7 or 8 (and quite soon Windows 10 as well), virtualization, cloud computing, bring-your-own-device and a lot more. IT managers are asked not only to define strategies for these new subject matters, but also to cut costs and improve efficiencies in all areas of their work, whilst delivering better service to their end-users.

With this growing complexity

in mind, ad hoc testing, converting, and packaging applications is no longer a viable method. IT departments need to control and streamline tasks by a unified Application Lifecycle Management system, which encompasses the whole application lifecycle.

A critical part of this lifecycle is the packaging or re-packaging of software applications to convert them to the required format for automated deployment to managed devices. This is exactly where RayPack as a framework for the creation and management of software packages kicks in: it supports a broad variety of package formats, operating and deployment systems. The RayPack components allow enterprises to implement well-structured processes for controlling and executing EALM tasks.



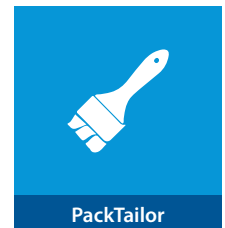
PackRecorder

Capturing system snapshots for repackaging



PackDesigner

Creating and editing packaging projects



PackTailor

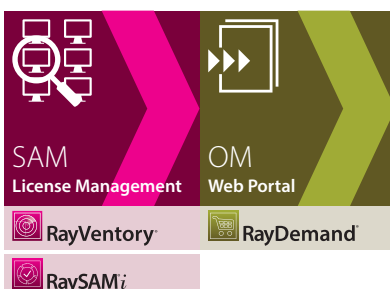
Individual customization of MSI-based installations

In order to manage these processes,

RayPack utilises integrated framework components along with external connectors, which enable interoperability with market-leading workflow, software deployment and data storage systems.

Despite its autonomous usability, RayPack is fully integrated within RaySuite, Raynet's suite of Enterprise Application Lifecycle Management products (see below). RaySuite delivers all the required lifecycle tools embedded into the central workflow management system RayFlow. RayFlow encompasses highly specialized applications for the successful completion of inventory, evaluation, packaging, compatibility assessment, quality assurance, and the final deployment of software packages.

RayFlow®



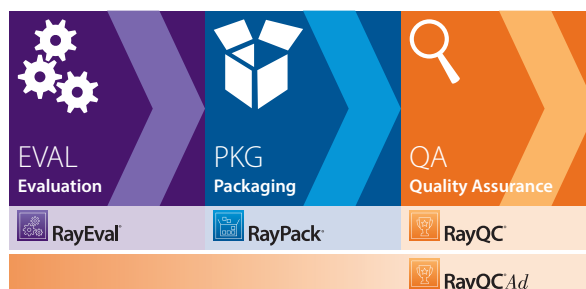
SAM
License Management

OM
Web Portal

RayVentory

RayDemand

RaySAM:i



EVAL
Evaluation

PKG
Packaging

QA
Quality Assurance

RayEval

RayPack

RayQC

RayQCAd



DEP
Software Deployment

MDM
Mobile Management

RayManageSoft i

RayMobile

New: Release 2.0



Packaging for a WISer generation

User Experience and Productivity

The words usability, responsiveness and convenience obtained an entirely new meaning with RayPack 2.0.

Keep an overview

Thanks to the new feature of row tracking users can track both, direct and indirect references between data objects from within the TABLES editor. To increase productivity, the tracking mechanism automatically updates all connected rows when editing a cell or removing a row.

Faster than lightning

You need to stop caring about working with large packages. The core modules of RayPack have been improved to achieve better overall performance. The time required for loading big RPP/MSI projects with ten thousands of objects, depending on the specific scenario, environment, and the actual size of the package, should decrease by astonishing 99%.

Improved and configurable condition builder

The condition builder allows to easily define conditions for components, features and properties belonging to the current package. It can also recognize the predefined MSI properties, and provides a handy set of comparison and state/action conditions. Simply clicking items to add them to condition clauses enormously increases productivity and decreases erroneous condition definitions.

The application view has been redesigned. Now there is a way to specify the End User License Agreement for the current project by loading and saving directly from an RTF.

Setup Wrapping

Be well prepared

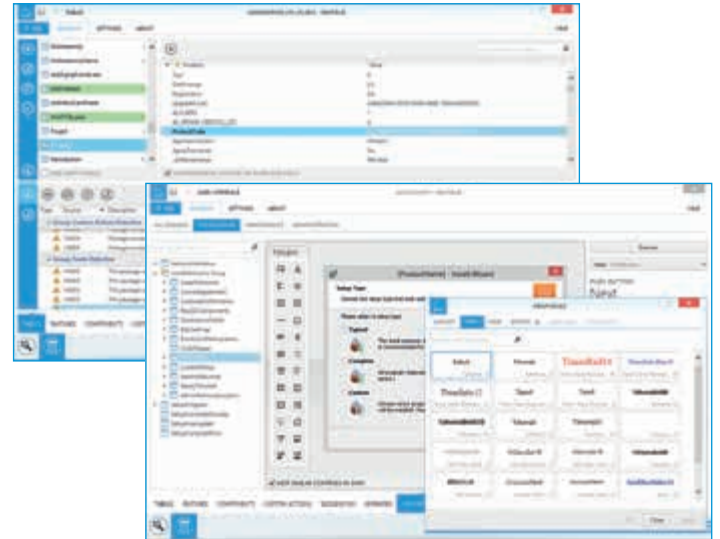
Defining critical dependencies for projects is no longer a big deal with the prerequisites manager of RayPack 2.0. The new prerequisites screen provides an easy way to handle this. RayPack 2.0 contains a predefined list of commonly used prerequisites, which can be downloaded and added to any project as required. Within the PackPoint all prerequisite resources are shared and available for your entire packaging factory team.

Once the prerequisites have been defined, they will be present in the wrapper as well. In RayPack 2.0 the user has the ability to build setup wrappers directly from the PackDesigner. In the build setting screen, a checkbox can be used to create a wrapper over the current project. It can either be generated as an .exe file or as command line wrapper that can be used to install the package.

Setup Development

Functional and eye candy

The brand new MSI Dialog Designer of RayPack 2.0 significantly improves the UI management performance and adds cutting edge features that enable the user to build and design their own dialogs using the native MSI technology for a pixel-perfect preview. This offers endless possibilities for designing custom dialogs, whilst keeping the use of predefined ones for common requirements easy as pie.



IIS Scanner

Within each RayPack 2.0 installation a standalone IIS Scanner is provided to the user. Scanning and extracting the full configuration of a running IIS instance can easily be done by this utility. Results can be imported directly to any RayPack project (RPP/MSI) and stored for later re-use. The interactive GUI can be used to pick-up the right website to be exported. It is advantageous that the user is able to work with this tool on any system – without the need to install the full RayPack application, and free of license limitations.

Linked folders support

The user is able to mark any folder within PackDesigner as 'dynamic', by simply linking it to a physical path on the drive. This enables the definition of the target feature and of wildcards to filter out unnecessary files from the physical folder. Using this feature is recommended to define resource structures which change frequently.

Integration and Import

Another outstanding highlight is the integration of high level quality assurance provided by RayQC directly into the RayPack 2.0 GUI. The new quality menu can be used to perform various quality checks against the current project and provides a simple yet effective checklist, which can be generated with one click, to be used during pre-quality checks and as a baseline for quality engineering tasks.

RayPack 2.0 enables the packager to use a wide range of rulesets, to cover many cases from virtualization to collision management. A major advantage is, that the user does not have to switch to other software programs to use these quality features as long as both products are installed on the same machine.

QC results are shown directly within the RayPack validation results, allowing to fix the issues before the package is actually tested against them in later Quality Assurance phases of the overall packaging process. This saves time, money and protects your nerves from uncomely rejects.

ISM/WSI Import

Converting ISM/ WSI projects to RayPack's RPP project format, which has, by the way, undergone a massive redesign between 1.4 and 2.0, is now possible as well.



Packaging for a WISer generation

Components & Competences

Raynet is the service provider with the most certified trainers and packagers worldwide. The experience gained over the past decades from hundreds of successful projects, trainings, and packaging factory implementations is all molded into RayPack.

Therefore, the main mission of RayPack is to support professional packagers in operating their packaging projects successfully and efficiently.

When Windows Installer procedures reach their limitations, RayPack is ready to raise the bar. Intuitive wizards guide the user through classical packaging tasks – beginning with repackaging, then moving on to the generation of Windows Installer Transform files, and finally coping with the realization of complex packaging requirements. Our framework simultaneously provides novice support with the help of visual interface elements and wizards, and the means to master advanced levels of packaging.

With **PackRecorder**, users run the market's fastest capture engine for system snapshots. It recognizes added, manipulated and removed objects of various types. Providing reusable system snapshots is the technical cornerstone for the execution of sophisticated methods of packaging related analysis. Our editor allows the adjustment of exclusion rules directly from the capture result. Besides being a nice convenience, it is also one of the uncounted features which ensure that PackRecorder initiates repackaging processes of the highest quality.

Beneficial results include minimal validation measures, minimal target system interference and noticeably faster delivery times overall.

With **PackDesigner**, users create, edit, and validate packages for systems with x86 and x64 architectures.

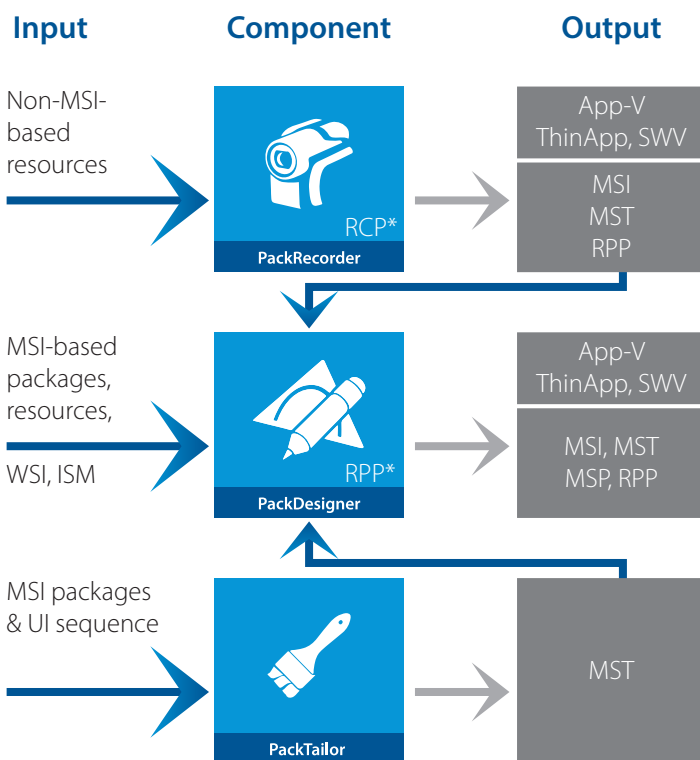
It is not just another tool for editing package resources. It is THE editor experienced packagers have always wished for. Beneath the polished finish of simplified, wizard-based procedures (e. g. for permission control, run-time operations, database interaction, and IIS population), the intelligent PackDesigner engine guarantees quality and security. PackDesigner does not only provide everything required to prepare silent software installation routines, but offers an elaborate set of setup design features as well. Vendors and developers who need to prepare the professional publication of their software products, are highly welcomed to be a part of the RayPack user community.

With **PackTailor**, users extract installer adjustments by applying the easiest of methods: the simple walkthrough of the installation's user interface sequence, which is already contained in the MSI resources.

As soon as the results of user interaction have been traced, analyzed, and – where required – manually fine-tuned with the PackTailor Wizard, RayPack generates a transform file that is ready for deployment.

Preparing a set-up that runs in the background without requiring user interaction ('silent installation') has now become a matter of just a few mouse clicks – like MSI branding and localization.

Typical Use Cases



Functional Highlights

Brilliant Management-Interfaces

- MSI syntax suggestions (e. g. properties & paths)
- Direct installer database table manipulation (incl. live highlighting for change tracking, attributes editor, maintenance of referential integrity, etc.)
- Properties Manager
- Dialog editor for setup design
- Upgrade Manager (incl. synchronization)

Maximal Resource Control

- MSI rebuild & CAB splitting
- Merge module support
- PackPoint for resource management & profile sharing
- Run-time operations and permission control
- COM harvesting

Additional Modules for Advanced Needs

- ICE validation with individually customizable rule sets
- Reusable snapshots
- Package signing
- Inline exclusion rule management
- IIS application deployment
- System search
- Scheduled tasks



Development Roadmap

As an innovative product on the enterprise packaging market, RayPack is not set in stone, but rather an ever-evolving tool from packagers for packagers. The upcoming releases are jammed with additional components and functionalities that will almost fulfil your every wish:

New Components for Ideal Process Design

- **PackBot** for the automation of packaging activities
- **PackLib** as Definitive Package Library
- **PackTracer** for the extended analysis of divergences between system states
- **PackBench** for the structured organization of packaging processes

Extension of RayPack Core Functionality

- **Scripting & Tool support** for automated manipulations on packaging projects and resources
- **Multi-language user interface** starting with German and Dutch – further language versions will follow successively and on request
- **Multi-platform** packaging for non-Windows operating systems

Tools for Setup Designers & Developers

- **Plugin-based post build events** for custom build procedure adjustments
- **SQL & ODBC Scanner** extend the standalone toolkit
- **Visual Studio Integration** to build a bridge between development and packaging
- **Setup Templates** for the swift creation of appealing UI sequences
- **Merge Module Manager** for creating and editing MSM files

Working with Additional Formats

- **WiX import/export**
- **ISM/WSI export**
- **Additional virtual target format XenApp** for Citrix environments
- **Deployment System** connector utilities
- **App-V Editor**

An essential feature of Raynet’s product development policy is the intensive communication with our end-users. In order to remain flexible and adapt to the requirements of our customers, our Development Roadmaps are always dynamic.

Further RayPack Information & Services

The latest news, release information and the possibility to sign up for a free trial without obligation are available at www.RayPack.net.

Additionally, we frequently offer live webinars to present the latest RayPack feature implementations, get real world industry feedback, and discuss possible solutions to contemporary packaging challenges.

The Raynet Knowledge Base (<http://knowledgebase.raypack.net>) is a source for best practice tips & tricks, a place for sharing learned lessons with the community, and the starting point for power users who want to go the extra mile to achieve product-guru status.

Also check out our video tutorials with essential information for an easy startup. Follow the step-by-step instructions to pack application projects in no time! Lean back, enjoy a cup of coffee, and relish in your first steps into the world of RayPack!



About Raynet

Raynet GmbH is a leading and innovative service and solution provider in information technology and specialized in the architecture, implementation and operation of all tasks within "Application Lifecycle Management". Raynet's Headquarters is in Germany and presently has additional locations throughout Germany, the USA, Poland, UK and the Netherlands.

For over 15 years, Raynet has supported hundreds of customers and partners with its products and solutions for enterprise application management projects worldwide. These include license management, software packaging, software deployment, migrations, client engineering and much more. Additionally, Raynet maintains and cultivates strong partnerships with leading companies in Application Lifecycle Management.

Raynet products and solutions are unique in design and functionality. Their development is highly driven by our customers and partners who play a big role in the development of our products and are a key reason why our products are always cutting edge. Whether you want to introduce a new deployment tool or to start a SAM project, whether you want to plan a packaging factory or do a migration – Raynet is the choice for best-of-breed-practices in services, products, and solutions for Application Lifecycle Management.

Next Steps

For more information, please visit our website: www.raynet.de or contact our sales team on +49 5251 54009-0 or sales@raynet.de



Raynet GmbH

Technologiepark 20
33100 Paderborn, Germany
T +49 5251 54009-0
F +49 5251 54009-29
info@raynet.de

www.raynet.de



RayPack®

www.raypack.net