

**RAYSUITE<sup>®</sup>**  
**APPLIANCE**

Professional Client Lifecycle  
Management for  
Medium-Sized Businesses

•rayNET



# RAYSUITE® APPLIANCE

## Enterprise Application Lifecycle Management Suite



Central access point for  
holistic software  
management

### Professional Client Lifecycle Management for Medium- Sized Businesses

Small and medium-sized businesses (SMBs) wish for a professional software management system, but often shy away because of associated high costs.

Just like large enterprises, SMBs need a safe and reliable way to manage and update their applications and operating systems. – a relieve to their IT resources. Ideally, these businesses should not have to manually deal with their client management and their tools should be able to support the entire lifecycle of an application.

And like every other enterprise, they don't want costly services or long-term upgrade processes. SMBs want to be able to retain existing structures and at the same time have software management that evolves with their company.

RaySuite Appliance masters all administrative challenges with a unified software deployment system for operating systems and security patches. It helps customers reduce costs by distributing and managing servers and desktops from a central location. Furthermore, this solution contains additional software components that complete the management of the entire client lifecycle: With the integrated software packaging solution, including Package Store, RayPack Studio and RayFlow, all packaging-related tasks can be carried out professionally.

Available as an **appliance, managed service** or as a **cloud solution**. RaySuite Appliance is a pre-configured and preinstalled set of software components, which perfectly harmonize in a unique and intuitive workflow with each other.

## Central Software Deployment

### Deployment Management

- The integrated Deployment Manager ensures the central and automatic software deployment to decentralized clients and servers
- By means of various functions for mass processing and automation of software updates, a permanently monitored provisioning and installation process of Windows and non-Windows applications is guaranteed
- Implementation of installation and deinstallation orders controlled by the ordering system

## OS Deployment and automatic installation

### OS Deployment Management

- OS Deployment Manager automates the process of deploying and installing Microsoft Windows 10 and Windows Server 2019 operating systems as well as earlier versions on devices throughout the IT domain
- Once a client has gone through the process of initial installation of the operating system, it is equipped with basic requirements such as drivers and basic software packages
- With the OS Deployment Manager, every newly installed client will be easily and automatically integrated into the Application Lifecycle Management by the Deployment Manager and the Security Manager
- The software agent for deployment supports several operating systems in various versions, such as Windows, macOS, UNIX and Linux

## Security with up-to-date patches

### Security Patch Management

- Proactive Patch Management: Monitoring of the patch releases and uncomplicated deployment of the security updates from Microsoft and Third-Party products, such as Adobe products, Google Chrome and many more
- Automatic notification and alerts for new patches
- Vulnerability analysis and reporting based on this information

## Entire overview of the IT infrastructure

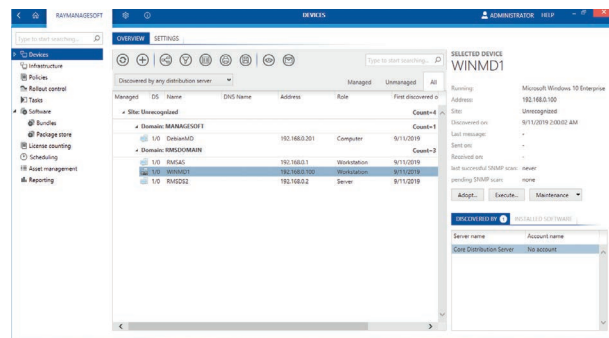
### Hardware and Software Inventory

- Detection of physical and virtual devices across the network
- A portable application for centralized and decentralized scanning and capturing of all data in the IT landscape, specialized in scanning operating systems, Oracle databases, Hypervisor (e.g. Hyper-V and VMware) and network devices
- Various scanning technologies for an efficient inventory and highest data quality: Agent-based and agentless (portable, remote, zero touch)
- Enormous relief of administration through individual planning and automated execution of scans

## Reliable reports for a comprehensive overview

### Reporting Engine

- Central reporting is organized by geographically dispersed locations and by distribution status, providing reliable information across the entire network with many drill-down capabilities
- Monitoring of installation status and proactive license control
- Best possible and always up-to-date transparency over the entire IT infrastructure with detailed overviews of hardware, device status, software inventory, SNMP devices, VMware infrastructures and Oracle servers



All device information at a glance

Customers especially benefit from cost savings and expandability of the RaySuite Appliance:

### Comprehensive

- RaySuite Appliance offers a complete set of software components, that harmonize perfectly in a unique, intuitive workflow
- Decentralized distribution hierarchy allows central and site-specific administration of all services
- Automated network discovery for the operation of the end devices

### Scalable

- RaySuite Appliance will be integrated into your existing IT infrastructure, even in a virtual one
- If an enterprise needs to grow, a full-service SQL server can easily be upgraded
- The solution supports a large number of distribution nodes

## All licenses at a glance

### License Counting

- A quick and easy way for controlling the number of licenses (on user-, device-, processor- or core basis) and counting all managed and unmanaged software installations
- Basis for ensuring license compliance to survive future audits unscathed
- The determined data serves as a basis for license optimization

### Complete integration of finished software packages

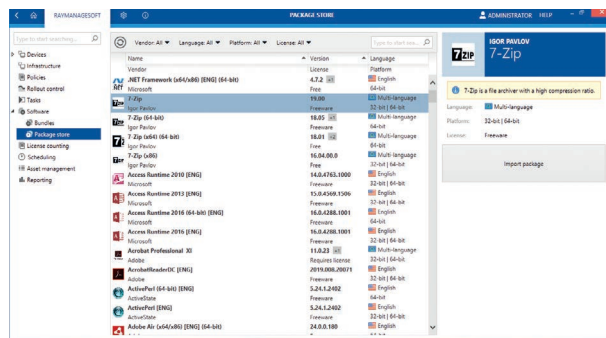
### Package Store

- Distributable software packages: Analyzed, pre-configured, quality-assured and tested for Windows 10
- Integrated editor for easy package customization
- Direct access to over 300 immediately available software packages – constantly growing
- Email information about new version availability

### Automated administration of data and IT assets

### Asset Management

- Adding individual assets which can be linked to existing objects in a useful way
- Workstations, notebooks, servers, monitors, printers, telephones, tablets, webcams, routers as well as tables and chairs can be recorded and managed in asset management with various properties
- Increased security through automation of account and permission management



Integration Package Store

## Creation of reliable packages for

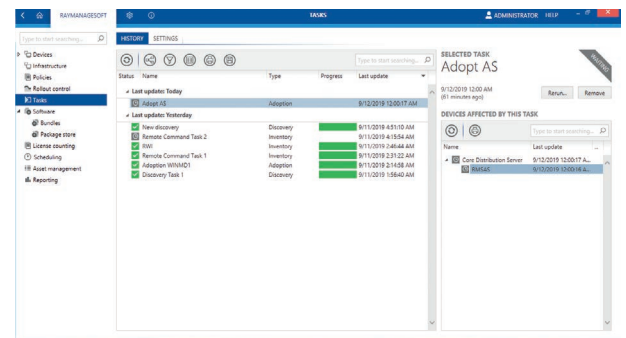
## Software Packaging

- Simple and automated creation of professional documentation of all kinds – including software manuals
- Generation of classic (e.g. MSI, MSIX, MST, MSP) and virtual packet formats (e.g. App-V, ThinApp, SWV)
- Intuitively usable wizards guide you through classic packaging tasks
- macOS packaging
- Professional quality control of any processes and steps using various test criteria, which are queried manually or fully automatically using checklists

## Efficient management, control and monitoring of all processes

## Workflow Management

- Central control and tracking of all phases, processes and tasks from one interface
- Available as web and client version
- Demand-oriented collection and provision of all important information for each project
- Transparency through control and monitoring of the entire workflow within the company
- Flexible administration and operation, also across clients
- Comprehensive reporting options provide a clear overview of projects



Structured overview of all created tasks

## User-friendly

- A pre-configured application for different expert levels (users, administrators)
- An integration into your existing infrastructure, like Active Directory (AD), SQL or its capability to run isolated from existing IT infrastructure if needed; In other words, you can decide to use the AD of your infrastructure or not
- Easy, straightforward updating by a simple replacement of the application part in question
- Independent set of applications running on „one separate box“ without interfering established IT processes

## Affordable

- There are only two components that are essential for the installation: Microsoft 2012 Standard Server and Microsoft SQL Server 2012 Express
- Significantly less implementation support and consulting required because of minimal hardware and software requirements
- The installation of RaySuite Appliance will be done in a plug & play approach



# RAYSUITE® APPLIANCE

Software Deployment

Hardware & Software  
Inventory

OS Deployment



Software Packaging  
& Virtualization

Asset Management

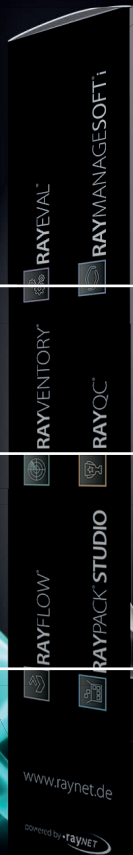
Enterprise Application  
Lifecycle Management  
Suite

Security Patch  
Management

Integration  
Package Store

License Counting

Workflow  
Management



## About Raynet GmbH

Raynet GmbH is a leading and innovative service and solution provider in information technology and specialized in the architecture, implementation and operation of all tasks within „Application Lifecycle Management“. In addition to its headquarters and subsidiaries in Germany, Raynet is also located in the USA, Poland and the UK.

Since more than 20 years, Raynet has supported hundreds of customers and partners with its products and solutions for Enterprise Application Management projects worldwide. These include License Management, Software Packaging, Software Deployment, migrations, client engineering and much more. Additionally, Raynet maintains and cultivates strong partnerships with leading companies in Application Lifecycle Management.

Raynet products and solutions are unique in design and functionality. Their development is highly driven by our customers and partners who play a big role in the development of our products and are a key reason why our products are always cutting edge. Whether you want to introduce a new deployment tool or to start a SAM project, whether you want to plan a packaging factory or do a migration – Raynet is the choice for best-of-breed-practices in services, products, and solutions for Application Lifecycle Management.

## Talk to our experts

For more information, please visit our website: [www.raynet.de](http://www.raynet.de) or contact our sales team on +49 5251 54009-0 or [info@raynet.de](mailto:info@raynet.de)



### Raynet GmbH

Technologiepark 20  
33100 Paderborn, Germany  
T +49 5251 54009-0  
F +49 5251 54009-29  
[info@raynet.de](mailto:info@raynet.de)

[www.raynet.de](http://www.raynet.de)

