

SQL Doc Pro™

Create precise database documentation with minimum effort

What is SQL Doc Pro?



SQL Doc Pro is a documentation tool which makes it simple to document databases in an easy-to-read format. It is highly customizable, and enables users to document databases in exactly the way they require, with minimum effort. SQL Doc Pro includes a command line interface so documentation can be generated on a schedule - ensuring developers will always see the latest version.

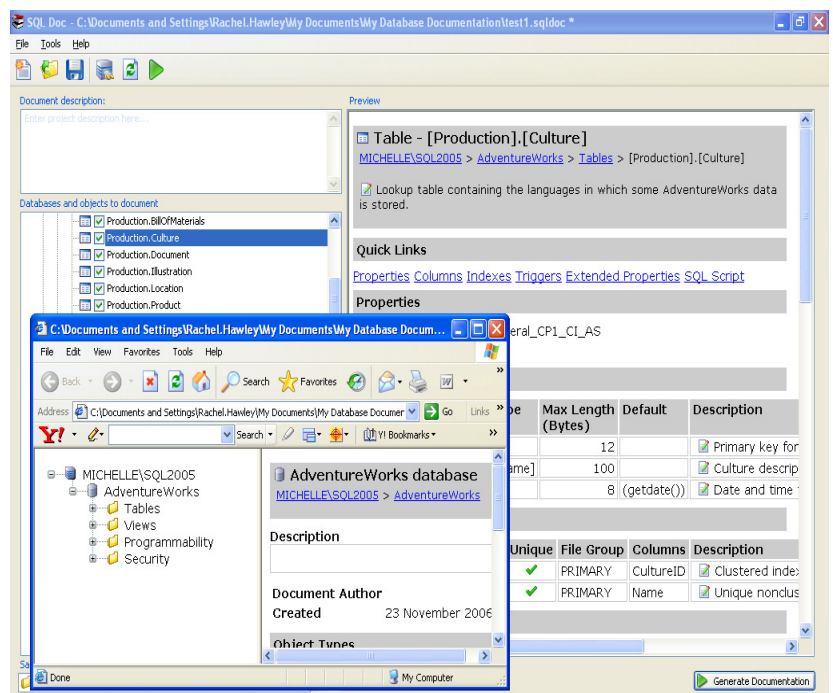
Why use SQL Doc Pro?

Skilled DBAs understand the requirement for documentation – for database overview and management protocol purposes, or detailed customer reports. However important, this task is time-consuming and is often left unfinished. SQL Doc Pro provides a simple solution, by connecting to databases and outputting clear, concise, readable documentation.

How does SQL Doc Pro work?

SQL Doc Pro uses standard Red Gate APIs to retrieve information about databases and turn it into HTML documentation. It includes the ability to add or amend object descriptions and display all cross-database dependencies.

Through an intuitive user interface you can select objects from more than one database on a SQL Server instance and see a running preview of the documentation you will produce. You can also edit extended properties to store descriptions in your databases. For each object, SQL Doc Pro provides the creation SQL scripts and identifies any dependencies.



SQL Doc's simple GUI and customizable formatting options allow users to create database documentation with just a few clicks.

SQL Doc™ (continued)

When should I use SQL Doc Pro?

SQL Doc Pro is a simple tool designed to document and export database schemas into HTML or CHM format for many different tasks: a history of changes, QA purposes, dependency analysis and reporting.

Who should use SQL Doc Pro?

SQL Doc Pro has been designed for DBAs who need to produce documentation for their databases, and anybody who wants to add the "human touch" to databases – clear, precise, intelligible documents. Regardless of your job title, SQL Doc Pro allows you to document and describe your databases with the minimum of effort.

Technical specifications

SQL Doc Pro runs on a user's PC and accesses SQL Servers over the network. It is also possible to run SQL Doc Pro on a server.

Supported Environments

- SQL Server 2008, SQL Server 2005, and SQL Server 2000

Operating Requirements

- Windows 2000, Windows XP, Windows Vista or Windows 2003 Server
- SQL Server client-side tools
- SQL Server 2000, 2005 or 2008
- Microsoft .NET Framework 2.0
- MDAC 2.8+
- 128 MB RAM
- 200 MB hard disk space
- Runs on a user's PC (can also run on a server)

How much does SQL Doc Pro cost?

SQL Doc Pro costs **£245**. This provides access to the tool and its command line interface. SQL Doc Pro can also be purchased in the SQL Toolbelt - a bundle of all our SQL tools representing a substantial saving over the cost of purchasing the products individually.

SQL Doc is also available as SQL Doc Standard Edition – a basic version of the tool which offers only the core documentation functions. The SQL Doc Standard Edition costs **£195**.

➤ SQL Toolbelt™

SQL Compare Pro + SQL Data Compare Pro + SQL Dependency Tracker + SQL Packager Pro + SQL Prompt Pro + SQL Refactor + SQL Backup Pro + SQL Data Generator + SQL Multi Script + SQL Doc Pro + SQL Comparison SDK = **£995**

Support and upgrade contracts are available for 25% of the product's purchase price.

Red Gate Software

St John's Innovation Centre, Cowley Road, Cambridge, CB4 0WS, UK
tel: +44 (0) 870 160 0037 toll-free: 1 866 RED GATE (733 4283)
email: sales@red-gate.com web: www.red-gate.com

"Wow! This is it. This is the one. THIS is what I expect from Red Gate. I just uninstalled all the other test installs for EVERY other documenter I have tried ... this one wins HANDS DOWN. When we looked at this, there were three DBAs huddled around my monitors and we all had the same reaction ... dead silence ... and then words of awed exclamation."

Doug Shontz, Senior Database Administrator, *AdvancED**

redgate®
ingeniously simple tools