



**SPARX**  
SYSTEMS

# Pro Cloud Server

## Enterprise Integration

All new Integration capabilities that let you tightly link your Enterprise Architect models to a wide range of other platforms

- Customize and Configure access to many different external platforms
- Import external data into EA models to drive and enrich development
- Explore and participate in discussions (where supported)

## Prolaborate

Discover how to use information in your models to drive key decisions.

- Leverage model data to build dashboards and graphs
- Share curated business knowledge to stakeholders
- Advanced impact analysis and what if analysis capabilities
- State of the art social collaboration tools to engage business users

## Collaborative Modeling & Design Platform

*\*New Version*

**SPARX**  
SYSTEMS

- ✓ **Numerous updates** and improvements to WebEA providing browser based access to Enterprise Architect models for all stakeholders
- ✓ **Keystore** capability integrated with Pro Cloud Server for easy license management
- ✓ **Updated and improved** configuration tools to streamline installation and management

Request a Trial: [sparxsystems.com/procloudserver](http://sparxsystems.com/procloudserver)

**Sparx Systems**  
[sparxsystems.com](http://sparxsystems.com)

# Enterprise Integration



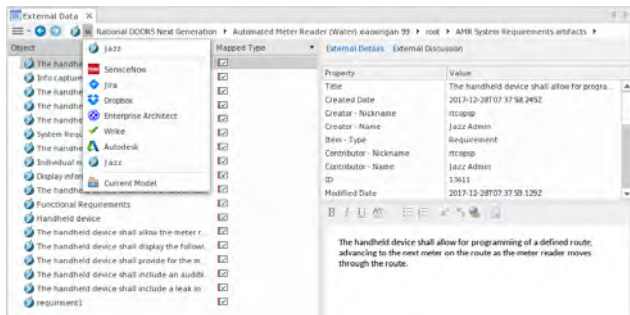
## EXTERNAL DATA SOURCES

Harness information in external tools and make Enterprise Architect a highly effective information hub.

The Pro Cloud Server new family of Apps includes a new capability for interchanging data with:

- Jira
- Service Now
- Wrike
- Jazz (DOORS)
- Team Foundation Server
- Dropbox
- Enterprise Architect
- Autodesk
- Confluence
- SharePoint
- Application Lifecycle Management
- Bugzilla

Integration into Enterprise Architect provides a convenient and powerful way to link information held in various services, back to core modeling and design elements within the Enterprise Architect repository.



On connection to an integration target, a modeler can retrieve lists of objects based on the target applications structures and then:

- Link an Enterprise Architect element to an integration object
- View external element properties
- View and in some cases add to, external object discussions
- Connect to Integrated model contents via WebEA
- Open external tools in a web browser at relevant bookmarks
- Import/Export elements

## ONE FOR ONE FREE LICENSE PACKS

For registered users with more than 5 current licenses Sparx will offer a PCS with WebEA capability equal to the number of registered licenses up to a maximum of 25 users.

## WebEA For Modelers

### NEW FEATURES

#### Context Browser

A new navigation option giving a simple tree structure limited to the current package context (matching Enterprise Architect's new "Context Browser").

A convenient way to explore a model.

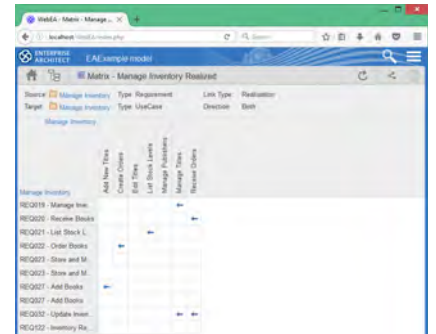
#### Matrix

View your Relationship Matrix in WebEA.

Relationship Matrices defined in the model can now be viewed in WebEA.

#### Miniprops

A new lightweight properties window viewable with a diagram to enhance model exploration and limit forward and backward navigation.



### VISIBILITY LEVELS

Control who sees what in the Project Browser.

Both Oracle and SQL Server repositories now support Row Level Security in cloud based models. This tightly restricts sections of the model to only allow access to secure users.

With tight integration into the database, the Visibility Level restrictions deny any means of access to users with lower security, even restricting custom SQL queries.

# Prolaborate

## Drive Decisions with Model Insights

### SOCIALIZE YOUR ARCHITECTURE!

- Leverage model data to build dashboards and graphs
- Share curated business knowledge with stakeholders
- Advanced impact analysis and "what-if" analysis capabilities
- State of the art social collaboration tools to engage business users
- Transform models into an intuitive portal with rich user experience
- Enable live model information in Enterprise Knowledge management tools

#### Live Curated Access

Allow customized views to specific parts of Enterprise Architect models

#### Social Collaboration

Enterprise-wide social platform to discuss the model from different viewpoints. Interactive Charts create advanced reports from model data to answer key business queries

#### Rich User Experience

Enhance user experience by personalizing all touch points



- Engage your Teams
- Foster Agility and Transparency
- Discover Real Value of Enterprise Architecture