



ENTERPRISE ARCHITECT

User Guide Series

The Window Selectors

Author: Sparx Systems

Date: 2025-07-04

Version: 17.1

CREATED WITH  **ENTERPRISE
ARCHITECT**

Table of Contents

The Window Selectors	3
The Design Window Selector	4
The Properties Window Selector	8
The Collaborate Window Selector	12
The Execute Window Selector	15
The Construct Window Selector	19
The Publish Window Selector	23
The Workspace Window Selector	28

The Window Selectors

There are many useful windows in Enterprise Architect, through which you can create, review and process data in your model. Each window can be accessed through one of several paths, such as ribbon options, menu options and shortcut keys. However, the fastest way to open either any single window or a succession of windows is through the Window Selectors. You simply press the appropriate Alt key combination and click on the name of the window you require in a grouped list.

Another Alt key combination provides access to lists of workspaces, each of which opens a complete suite of related windows simultaneously.

Each window that you open remains displayed until you specifically close it again.

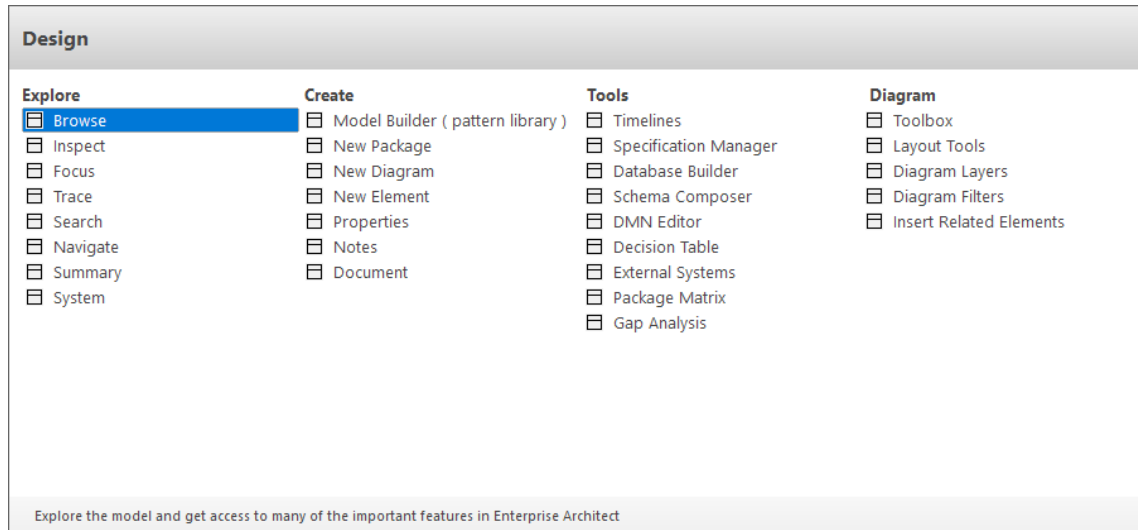
As you gain experience in working in Enterprise Architect, you will find these Window Selectors invaluable for opening the windows you immediately require, to display or update information on the object currently in focus.

The Window Selectors

Window	Description
Alt+1 - Design Window Selector	The Design Window Selector provides access to the windows for locating, creating and working on objects on the model, including within diagrams. Click on the name of the required window to immediately open it.
Alt+2 - Properties Window Selector	The Properties Window Selector lists the windows for editing the properties, features, structural elements and internal structures of an element. Click on the name of the required window or tab to immediately open it. This window selector can be displayed from both the 'Start > All Windows' panel and the 'Design > Element' panel.
Alt+3 - Collaborate Window Selector	The Collaborate Window Selector provides access to the Collaboration facilities such as Discussions, Reviews, Journal entries, personal conversations and information concerning the overall model.
Alt+4 - Execute Window Selector	The Execute Window Selector provides access to the Simulation, Source Code, Visual Analysis and Process Execution windows and tabs.
Alt+5 - Construct Window Selector	The Construct Window Selector gives access to tools for managing resources, changes, testing and project metrics.
Alt+6 - Publish Window Selector	The Publish Window Selector provides access to facilities for generating static and dynamic reports, exchanging models in part or entire, and keeping the model data accurate and up to date.
Alt+7 - Workspace Window Selector	The Workspace Window Selector is slightly different from the other Window Selectors, in that it lists workspaces for a number of areas of work or tasks. Each workspace opens a suite of related windows together, so that you have all the necessary tools to work on the task. The panel provides workspaces for model design and construction, software analysis and simulation, and whatever you have customized to support your own working requirements

The Design Window Selector

The Design Window Selector provides immediate access to a range of windows for locating, creating and working on objects on the model, including within diagrams. Each window name is a command that, when you click on it, opens that window.



The windows are organized into four sets, as described in the tables of this topic.

Explore

The 'Explore' group of windows help you to locate and display information on the structures of your model.

Option	Description
Browse	Opens or returns focus to the Browser window at the 'Project' tab. The Browser window displays your model objects and features in a number of arrangements, reflecting the content and structure of your model. The Browser window is the primary mechanism for browsing and exploring your model and is the jumping off point for many of the most important features in Enterprise Architect. The 'Project' tab displays the full structure and content of your model
Inspect	Displays the Inspector window at the 'Details' tab. The Inspector window provides the facility of examining the details of an individual element, whether held in the current model or in an external data source. The 'Details' tab lists all the features and characteristics of the element, appropriate to the element type.
Focus	Displays the Focus window, a valuable tool for locating and examining items of importance from anywhere in the overall model. This window provides access to Model Views, Working Sets, and recently opened diagrams and screens.
Trace	Displays the Traceability window, in which you can quickly see what elements are immediately linked to the selected element and in what relationships, and what elements are indirectly linked via a chain of relationships. You can also select a diagram and explore the relationships of all elements in that diagram. The window is mirrored in the 'Trace' tab of the Inspector window.
Search	Opens the Find in Project window, through which you can run a wide range of system and user-defined searches to extract and collate information on aspects of

	your model.
Navigate	Toggles the display of the Navigator toolbar, which identifies the location of the Package or diagram you are currently working in, and provides options to change the focus to another level of the Package's branch, perform relevant operations on the Package, and locate other Packages in the model.
Summary	Displays the Summary window, a brief, read-only summary of the general properties of the currently selected: <ul style="list-style-type: none"> • Element (including Packages) • Attribute • Operation • Test • Maintenance item or • Resource
System	Displays the System Output window, which shows the data that Enterprise Architect generates during each of a range of processes. The data from each type of operation generally has its own tab of this window.

Create

The 'Create' group of windows help you to develop new structures and supporting documents in your model.

Option	Description
Model Builder (pattern library)	Displays the 'Model Builder' window, which offers a range of model structures and patterns from various modeling domains, that can be imported into your project, providing a starting point for your own modeling endeavors.
New Package	Displays the 'New Package' dialog, through which you can create a new Package as a child of the current node.
New Diagram	Displays the 'New Diagram' dialog, through which you can create a new diagram under the current Package, from a range of diagram templates.
New Element	Displays the 'New Element' dialog, through which you can create new elements within specific tool-sets.
Properties	Displays the Properties window, which provides all the properties and characteristics of the selected object such as an element, diagram, connector or operation.
Notes	Displays the Notes window, on which you can add brief notes or longer descriptions and supporting information on the model object.
Document	Displays the Document window, in which you can read, create or edit a more formal or lengthy document on the current element - a Linked Document. You can also run searches to locate other elements that have Linked Documents, and work on those documents as necessary.

Tools

The 'Tools' group of windows help you to create and develop design and analysis structures in your model, such as specifications, databases and schemas.

Option	Description
Timelines Window	Displays the Timelines window, which comprises a number of tabbed pages, that allow the user to display and manage snapshots and baselines of diagrams, packages and elements. This facilitates performing comparisons of the various states of those items, as they change over time throughout the development of the model.
Specification Manager	Displays the Specification Manager window, a simple document-based interface to a selected Package or diagram in the model, providing the means of creating and reviewing elements as text representations of objects in the model.
Database Builder	Displays the Database Builder window, a tailored interface for the data modeler, allowing all database-related modeling tasks to be performed in a single location.
Schema Composer	Displays the Schema Composer window, a versatile tool for quickly and easily defining a variety of formal schema from a model, without needing to use a profile or stereotyped elements when building the definition of an XSD (or other) document.
DMN Editor	Displays the DMN Expression Editor, through which you edit DMN Expressions such as Decision Table, Literal Expression, Boxed Context, Relation, Invocation, etc. and apply the Decision Model and Notation (DMN) standard to model how a decision is made, and generate code for the decisions.
Decision Table	Displays the Decision Table Editor, through which you use the Decision Tables facility as a simple method of modeling how a decision is made.
External Systems	Displays the External Data window, which you can use to integrate the data from external providers such as Jira and Polarion into an Enterprise Architect model.
Package Matrix	Displays the Relationship Matrix, a spreadsheet display of relationships between model elements within a Package, or between elements in two different Packages. You can filter the selection of relationships shown.
Gap Analysis	Displays the Gap Analysis Matrix, which you use to analyze model artifacts to identify potential gaps between solutions. It helps you highlight shortfalls between the original or current solution and the proposed improvement - items that have been deliberately omitted, accidentally left out, or not yet defined.

Diagram

The 'Diagram' group of windows help you to add objects to the diagrams in your model, and format the diagrams.

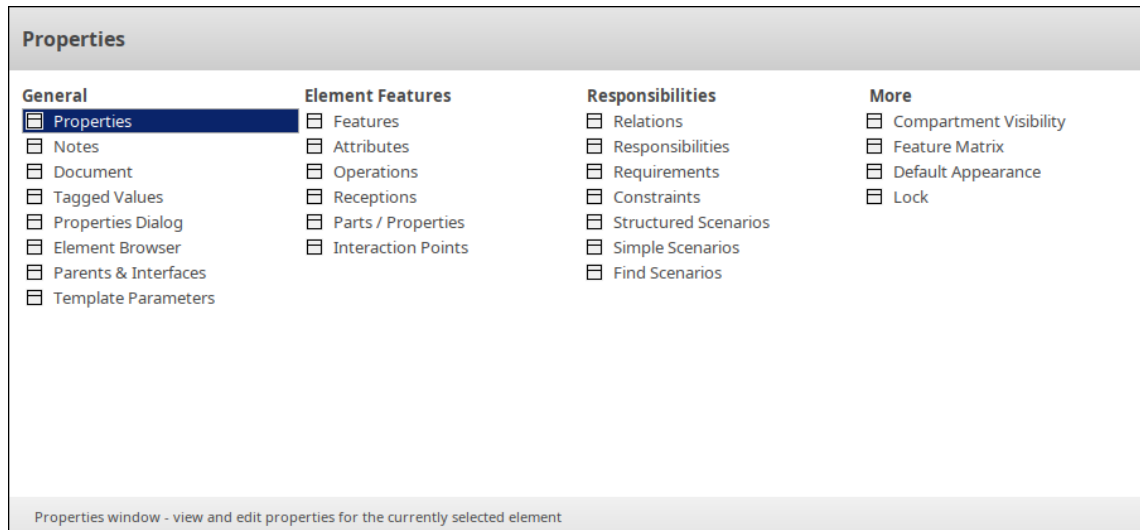
Option	Description
--------	-------------

Toolbox	<p>Opens the Diagram Toolbox, a panel of icons that you can use to create elements and connectors on a diagram. There are numerous pages available in the Toolbox, each page providing the icons for elements, connectors or patterns for a specific type of diagram under a specific Toolset or Perspective. You can also use the Toolbox icons to add elements to:</p> <ul style="list-style-type: none">• A Package through the Specification Manager and• A Package or an element in the Browser window
Layout Tools	<p>Displays the Layout Tools window, which helps you to set the elements on a diagram in one of a number of regular arrangements such as a circle, a box or a fan.</p>
Diagram Layers	<p>Displays the Filters & Layers window at the 'Layers' tab, which helps you to hide or expose parts of any diagram in segments that represent any concept that is the basis for separating or grouping the elements on that diagram. The layers can be compared to transparencies laid on top of one another in a stack, each transparency showing one grouping of elements on the diagram.</p>
Diagram Filters	<p>Displays the Filters & Layers window at the 'Filters' tab, which helps you to modify the display of diagram components so that the required items are immediately identified, without damaging the structure and integrity of the model.</p>
Insert Related Elements	<p>When a diagram is open this option displays the 'Insert Related Elements' dialog, which helps you to add a group of elements to a diagram based on a defined relationship type and element types.</p>

The Properties Window Selector

The Properties Window Selector provides immediate access to a range of windows for creating, examining and working on the properties of objects in the model, both from the Browser window and in diagrams. Each window name is a command that, when you click on it, opens that window.

You can display this Window Selector from both the 'Start > All Windows' ribbon panel and the 'Design > Element' ribbon panel.



The windows are organized into four sets, as described in the tables of this topic.

General

The options listed in this group provide access to the windows through which you define the nature and purpose of a selected element.

Option	Description
Properties	Displays or returns focus to the Properties window. This window provides a convenient and immediate way to view and edit the properties of a range of modeling objects, including elements.
Notes	Displays or returns focus to the Notes window for the element, in which you can record useful information on the purpose, design and development of the element.
Document	Displays the Document window, in which you can read or edit the contents of a Linked Document on the current element.
Tagged Values	Displays the 'Tags' tab of the Properties window, on which you can: <ul style="list-style-type: none"> Assign a Tagged Value to an Item Modify Tagged Values Assign Notes to a Tagged Value Perform advanced tag management Note that Tagged Values from stereotypes are not displayed on the 'Tags' tab, but in a segment of the 'Element' tab of the window.
Properties Dialog	Displays the 'Properties' dialog for the currently selected element, which helps you

	to define and review a wide range of properties of that element. The tabs and properties shown on the dialog depend on the type of element selected.
Element Browser	Displays the 'Details' tab of the Inspector window, showing all the added-on features and characteristics of the selected element.
Parents & Interfaces	Displays the 'Set Parents and Interfaces' dialog, on which you define the parent element(s) for a generalizable element, or an interface it realizes (implements).
Template Parameters	Displays the 'Templates' dialog, on which you can define: <ul style="list-style-type: none"> • Parameterized Class template parameters and • Binding expressions on a Binding Class

Element Features

The options listed in this group display specific tabs of the Features window, to enable you to manage those features of a selected element.

Option	Description
Features	Displays the Features window, a versatile and seamless tool for creating and editing the features of the selected element. The window has a number of tabs that help you to view, create, delete and manage: <ul style="list-style-type: none"> • Attributes • Operations and, for State elements, operation behaviors • Reception elements • On a State element, Internal Triggers • Structural elements, such as the Parts and Properties added to elements • Edge-mounted elements (Interaction Points) such as ActionPins and Ports that form the primary interaction points of complex, composite elements • Entry Points and Exit Points (Connection Points) on a State element
Attributes	Displays the Features window at the 'Attributes' tab, which enables you to create and manage attributes of a selected element. Attributes define the properties or internal data elements of an element.
Operations	Displays the Features window at the 'Operations' tab, which enables you to create Operations and manage their basic properties. Operations are features of an element that represent the behavior or services an element supports.
Receptions	Displays the Features window at the 'Receptions' tab, which enables you to manage any Receptions on the element. A Reception is a feature of a Classifier, and is derived from a Signal element.
Parts/Properties	Displays the Features window at the 'Parts/Properties' tab, which helps you to define certain constructs and events as structural elements, specifically Part and Property elements in this case.
Interaction Points	Displays the Features window at the 'Interaction Points' tab, which helps you to define certain constructs and events with structural elements, specifically

	Interaction Points or Ports, in this case.
--	--

Responsibilities

The options listed in this group help you to identify, create and delete the entities that define the operating or processing rules applied to an element.

Option	Description
Relations	Displays the Relationships window for the current element, listing the connectors issuing from and linking to the selected element.
Responsibilities	Displays the Responsibility window, which provides a convenient method of quickly identifying, creating and deleting rules applied to an element. The window shows the name and main properties of the entities that impose such rules or restrictions on the element, namely Requirements, Constraints, Scenarios and files.
Requirements	Displays the 'Requirements' tab of the Responsibility window, helping you to sketch out an element's internal requirements (you can switch from this tab to the 'Properties' dialog to add detail to the requirement).
Constraints	Displays the 'Constraints' tab of the Responsibility window, which helps you to sketch out the element's constraints (you can switch from this tab to the 'Properties' dialog to add detail to the constraint). Typical constraints are pre- and post-conditions, which indicate things that must be true before the element is created or accessed and things that must be true after the element is destroyed or its action is complete.
Structured Scenarios	Displays the Scenarios View, offering a wide range of facilities for generating and modifying scenarios, which you can use to quickly and easily define the structure, actions and interactions of the scenarios defined for an element such as a Use Case. These scenarios can be the main (basic) path, alternate paths or exception paths.
Simple Scenarios	Displays the 'Scenarios' tab of the Responsibility window; this is the simplest of the three screens on which you can create and manage scenarios for an element. You use this tab to create a Basic Path scenario or, if a Basic Path already exists, an Alternate Path scenario. A scenario is a real-world sequence of operations that describes how the functional behavior, business workflows and end-to-end business processes represented by an element work in real-time.
Find Scenarios	Executes a search across the model to locate all elements that have defined scenarios.

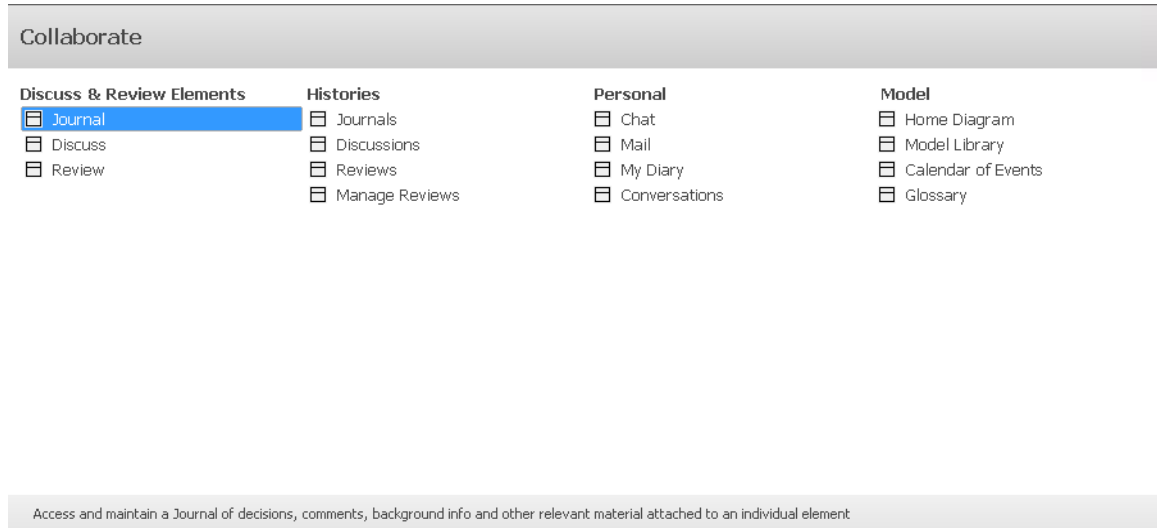
More

Option	Description
Compartment Visibility	If you have selected an element on an open diagram, this option displays the

	Compartment Visibility window in which you can set a collection of options to display or hide the features of that element on that diagram.
Feature Matrix	Displays the Feature Matrix, on which you create display and manage relationships between two elements where the source and/or target is an element attribute, operation or reception.
Default Appearance	Displays the 'Default Appearance' dialog, on which you can change the global default appearance settings for an element type to a default appearance for a specific selected element wherever it is used in any diagram. The default appearance is the: <ul style="list-style-type: none">• Fill, border and font colors• Font styles, including font face and size• Border thickness
Lock	If you have selected an element, diagram or Package, this option displays the 'Lock Element' dialog on which you set or release a lock against other users being able to update the object.

The Collaborate Window Selector

The Collaborate Window Selector provides immediate access to a range of windows for collaborating with other members of your modeling team. Each window name is a command that, when you click on it, opens that window.



The windows are organized into four sets, as described in the tables of this topic.

Discuss & Review Elements

The 'Discuss & Review Elements' group of windows help you to discuss and review model elements.

Option	Description
Journal	Opens or returns focus to the Discuss & Review window at the 'Journal' tab. The Journal allows you to, for a selected object or diagram, maintain a daily log of ideas, comments, notes, suggestions, to-do lists and other reminders.
Discuss	Opens or returns focus to the Discuss & Review window at the 'Discuss' tab. You can select an individual element or diagram and develop a discussion that is directly associated with that object.
Review	Opens or returns focus to the Discuss & Review window at the 'Review' tab, through which you can set up and conduct a formal review of one or more elements and/or diagrams as defined by a Review element.

Histories

The 'Histories' group of windows help you to look back at the history of discussions and reviews of elements and diagrams in your model over a period of time that you can set.

Option	Description
Journals	Opens or returns focus to the Discuss & Review History window at the 'Journals' tab. The 'Journals' tab lists the elements across the model against which journal comments have been posted.

Discussions	Opens or returns focus to the Discuss & Review History window at the 'Discussions' tab. The 'Discussions' tab shows the Discussions that have been recorded on elements across the model.
Reviews	Opens or returns focus to the Discuss & Review History window at the 'Reviews' tab. The 'Reviews' tab shows the activity in formal reviews across the model, listing the items in which activity has occurred.
Manage Reviews	Opens the Reviews view, which lists all the Review elements in your model. It shows, for a selected Review element, the details of the elements and diagrams under review, allowing you to quickly see what reviews are taking place and what is happening within them.

Personal

The 'Personal' group of windows help you to communicate with other members of your team.

Options	Description
Chat	Opens or returns focus to the Chat & Mail window at the 'Chat' tab. The 'Chat' tab provides a facility for following and participating in quick conversations with individuals or members of a user group on any topic.
Mail	Opens or returns focus to the Chat & Mail window at the 'Model Mail' tab. This provides you with the ability to send, receive and respond to emails within the project team.
My Diary	Opens or returns focus to the Chat & Mail window at the 'My Diary' tab. In your personal diary you can type all kinds of ideas, notes, suggestions, to-do lists and other reminders of what you have done or intend to do in the model.
Conversations	Opens or returns focus to the Discuss and Review - History window at the 'Chat' tab. This lists the recent Chat conversations that you have been a part of or within groups that you are a member of.

Model

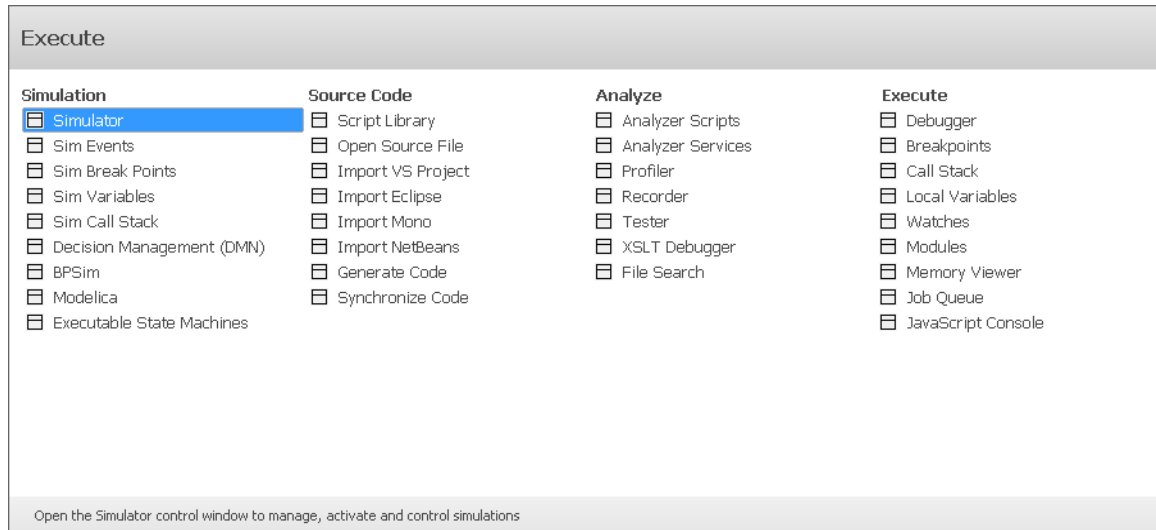
The 'Model' group of windows help you to organize your project.

Options	Description
Home Diagram	The Home Diagram command opens your home diagram, if you have one defined.
Model Library	Opens or returns focus to the Library window. The Library window is a place where documents such as specifications, requirements and project guidelines can be stored in the model.
Calendar of Events	Opens the Calendar view. This provides a project management overview, in calendar format, of the deployment of resources, timeframes for tasks, and

	upcoming project events such as milestones and meetings.
Glossary	Opens the Glossary View for the project, showing definitions of terms and, if you are in a project that has been translated into another language, the translations of the terms.

The Execute Window Selector

The Execute Window Selector provides immediate access to a range of windows for running simulations, working with source code, and analyzing and executing code. Each window name is a command that, when you click on it, opens that window.



The windows are organized into four sets, as described in the tables of this topic.

Simulation

The 'Simulation' group of windows help you to perform, check and manage model simulations of the processing defined in sections of your model.

Options	Description
Simulator	Displays the Simulation window, which provides the main interface for starting, stopping and stepping through your Simulation.
Sim Events	Displays the Simulation Events window, which is where you manage triggers and sets of events in a simulation.
Sim Break Points	Displays the 'Simulation Breakpoints' tab of the Breakpoints & Events window, which enables you to interrupt and inspect the Simulation process.
Sim Variables	Displays the Simulator Locals window, which shows all current simulation variables when the simulation is single stepping or paused at a breakpoint.
Sim Call Stack	Displays the Call Stack window which, during a Simulation, displays information about the threads and current execution context of the Simulation.
Decision Management (DMN)	Displays the DMN Simulation window. Using Decision Model and Notation (DMN) features you can not only model the decisions that your organization makes but also run simulations from these models to predict outcomes based on example data sets.
BPSim	Displays the Configure BPSim window, through which you define a Business Process Simulation (BPSim) configuration to be represented and contained in a BPSim Artifact element. The configuration is created specifically for and from an

	existing Business Process, defined in BPMN.
Modelica	Displays the Configure SysML Simulation window, the interface through which you can provide run-time parameters for executing the simulation of a SysML model.
Executable State Machines	Opens the Find in Project view and performs an Executable StateMachines search, listing all Executable StateMachines in the model.

Source Code

The 'Source Code' group of windows help you to generate, import and synchronize code from sources both internal to the model and external.

Options	Description
Script Library	Displays the Scripting window, which lists all available scripts in the model according to group.
Open Source File	Launches a 'File Open' dialog, through which you open a source file in a text editor within Enterprise Architect.
Import VS Project	When you have selected a parent Package in the Browser window, displays the Visual Studio Solution Import window through which you can import software projects authored in Visual Studio.
Import Eclipse	When you have selected a parent Package in the Browser window, displays the Eclipse Project Import window through which you can import software projects authored in Eclipse.
Import Mono	When you have selected a parent Package in the Browser window, displays the Visual Studio Solution Import window through which you can import software projects authored in Mono.
Import NetBeans	When you have selected a parent Package in the Browser window, displays the NetBeans Project Import window through which you can import software projects authored in NetBeans.
Generate Code	Displays the 'Generate Code' dialog, through which you can generate programming code from a UML element structure.
Synchronize Code	Displays the 'Synchronize Package Contents' dialog, through which you can synchronize the model and source code, creating a model that represents the latest changes in the source code and vice versa.

Analyze

The 'Analyze' group of windows help you to analyze the performance of the applications you are developing, in whole or in part, in a number of ways.

Options	Description
Analyzer Scripts	Displays the Execution Analyzer window, which enables you to manage all Analyzer scripts in the model.
Analyzer Services	Displays the Analyzer Services window, which lists the status of each Enterprise Architect service named in the config file, and its state.
Profiler	Displays the Profiler window, which allows you investigate application tasks that are determined to be performing slower than expected; you can see the actions that are consuming the application and the functions involved.
Recorder	Displays the Record & Analyze window, which helps you to record the live execution of an application and to generate a Sequence diagram from those recordings.
Tester	Displays the Testpoints window, through which you can develop a scheme by which constraints and rules governing the behavior of objects can be taken from the model and applied to one or more applications.
XSLT Debugger	Displays the XSLT Debugger window and the System Output window at the 'XSLT Transformation' tab, to run a transformation, control the process and inspect the state of the transformation using Enterprise Architect's debugger in combination with breakpoints.
File Search	Displays the Find in Files window, through which you can execute File Text Searches.

Execute

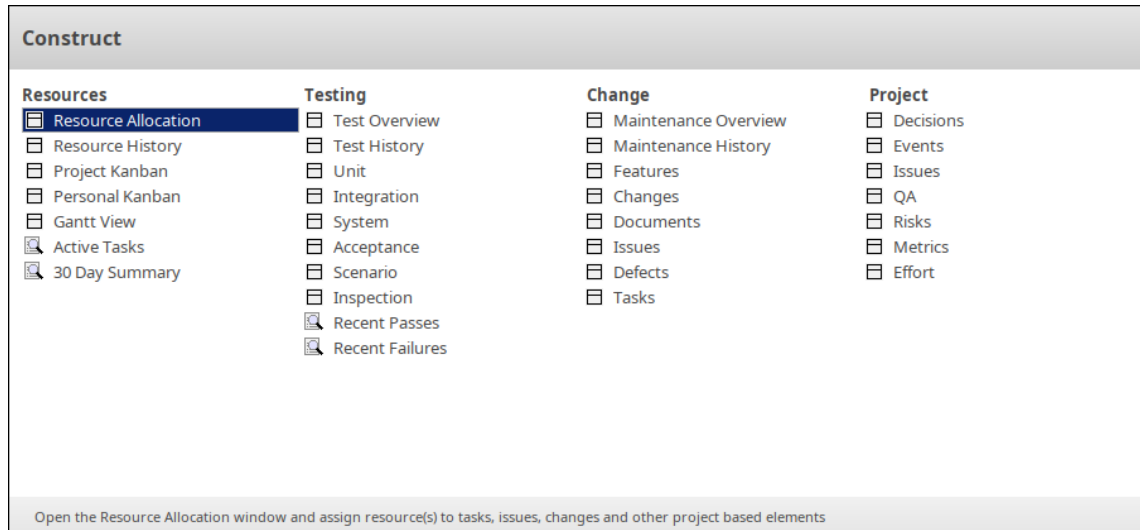
The 'Execute' group of windows help you to view the execution of code and manage various parameters such as the breakpoints, variables, DDLs and memory used in the execution.

Options	Description
Debugger	Displays the Debug window from which a debugging session can be controlled and output from the debugging session can be examined.
Breakpoints	Opens the Breakpoints and Markers window, which allows you to enable, disable, delete and otherwise manage breakpoints and markers in your source code.
Call Stack	Opens the Call Stack window, which is used to display all currently running threads in a process.
Local Variables	Opens the Locals window, which displays variables of the executing system.
Watches	Opens the Watches window, which can be used to evaluate data items that are not available as Local Variables. This window is most useful for native code (C, C++, VB).
Modules	Displays the Modules window, which for .NET and native Windows applications lists the DLLs loaded by the debugged process.

Memory Viewer	Displays the Memory Viewer, which can display the raw values of memory in hex and ASCII.
Job Queue	Opens the Job Queue window, which streamlines the process of working with Analyzer Scripts.
JavaScript Console	Opens the Console window, a command line interpreter through which you can quickly enable a script engine and enter commands to act on the script.

The Construct Window Selector

The Construct Window Selector provides immediate access to a range of features including resource management, testing, change management and project management. Each window name is a command that, when you click on it, opens the window covering that feature.



The features are organized into four sets, as described in the tables of this topic.

Resources

The 'Resources' group of windows provides access to features for general project management including managing task and resource allocation.

Option	Description
Resource Allocation	Opens the Resource Allocation window which displays a Gantt chart where you can assign resources working on tasks. The Gantt chart displays all resources/tasks assigned to the currently selected Element.
Resource History	Displays the Construct History window which provides a summary of all project management transactions over a given period, with separate tabs for Tests, Resource Allocations and Maintenance objects.
Project Kanban	Opens the repository's default Kanban diagram which can be used for visually defining and tracking a range of work items and their current stage of development.
Personal Kanban	In a shared security-enabled model environment, this opens a personalized Kanban diagram which can be used to visually track of a range of elements of particular relevance to that user.
Gantt View	Opens the Project Gantt View which illustrates a project schedule by showing a visual timeline of the start and finish dates of assigned resources.
Active Tasks	Opens the Active Tasks search in the Find in Project facility. This will return the set of tasks that are currently set as active (percentage complete < 100).
30 Day Summary	Opens the 30 Day Task Summary search in the Find in Project facility. This provides a brief summary of the work allocated to each resource over the last 30

	days.
--	-------

Testing

The 'Testing' group of windows provides access to features used in testing and test management.

Option	Description
Test Overview	Displays the Tests Cases window where you can create and manage test scripts for model elements. This supports unit, integration, scenario, system, acceptance and inspection tests.
Test History	Opens the 'Test' tab on the Construct History window, which provides a project management summary, over a given period, of the Tests being run across the model.
Unit	Opens the 'Unit' tab in the Tests Cases window where you can create and manage unit tests for the currently selected element.
Integration	Opens the 'Integration' tab in the Tests Cases window, where you can create and manage integration tests for the currently selected element.
System	Opens the 'System' tab in the Tests Cases window where you can create and manage system tests defined for the currently selected element.
Acceptance	Opens the 'Acceptance' tab in the Tests Cases window where you can create and manage acceptance tests for the currently selected element.
Scenario	Opens the 'Scenario' tab in the Tests Cases window where you can create and manage scenario tests for the currently selected element.
Inspection	Opens the 'Inspection' tab in the Tests Cases window where you can create and manage inspection tests for the currently selected element.
Recent Passes	Opens the <i>Passed Tests</i> search in the Find in Project facility. Searches the project for elements having test records where the 'Status' value is 'Pass'. In the <Search Term> you can specify the number of days in the period to search for.
Recent Failures	Opens the <i>Failed Tests</i> search in the Find in Project facility. Searches the project for elements having test records where the 'Status' value is 'Fail'. In the <Search Term> you can specify the number of days in the period to search for.

Change

The 'Change' group of windows provides a quick reference to the change management features including defects, maintenance, issues, changes and features.

Option	Description

Maintenance Overview	Opens the 'Maintenance Overview' tab on the Maintenance window, which provides a summary of the features, changes, issues and other maintenance details for the currently selected element.
Maintenance History	Opens the 'Maintenance' tab on the Construct History window, which provides a summary of the features, changes, issues and other maintenance details for a selected timeframe. This is regularly updated on model changes.
Features	Opens the 'Features' tab on the Maintenance window, which provides a list of the features and options to add new features to the currently selected element.
Changes	Opens the 'Changes' tab on the Maintenance window. This provides a list of the changes and options to add new changes to the currently selected element.
Documents	Opens the 'Documents' tab on the Maintenance window, which provides a list of the Documents logged for the currently selected element.
Issues	Opens the 'Issues' tab on the Maintenance window. This provides a list of the issues logged for the currently selected element and options to add new issues.
Defects	Opens the 'Defects' tab on the Maintenance window. This provides a list of the defects logged for the currently selected element, as well as options to add new defects.
Tasks	Opens the 'Tasks' tab on the Maintenance window. This provides a list of the tasks logged for the currently selected element, as well as options to add new tasks.

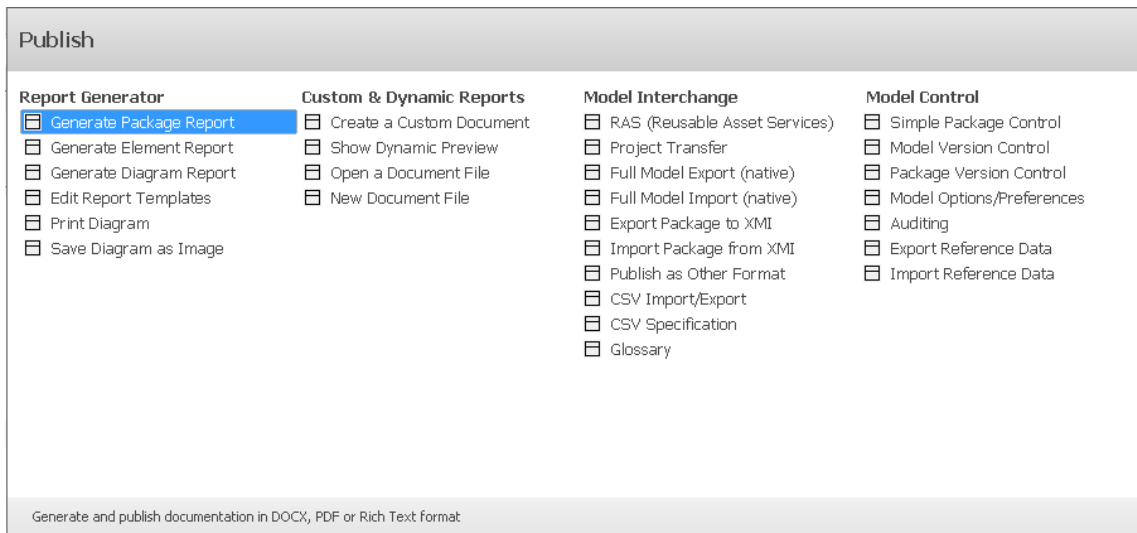
Project

The 'Project Tools' window provides access to features for recording against an element details such as decisions, events, effort, risks, and metrics. The Issues and QA are at the project level.

Option	Description
Decisions	A record of decisions or choices made on an element.
Events	A record of events or actions taken on an element.
Issues	The Project Issues are a record of issues on the repository or project level as distinct from the element Issues in the Change area. These are for recording events, occurrences and situations that impact on project development and delivery.
QA	The Quality Assurance reporting or System Documents provide pre-defined reporting, across the repository, on testing, dependencies, maintenance and resources.
Risks	A record of any risks associated with the element.
Metrics	A record of metrics measured for the element.
Effort	A list of effort expended in work on the element.

The Publish Window Selector

The Publish Window Selector provides access to commands that facilitate publishing and exchanging model data.



The Publish commands are organized into four sets, as described in the tables of this topic.

Report Generator

The 'Report Generator' commands focus on the specification and generation of reports of model data, including the printing or saving of model diagrams as images.

Option	Description
Generate Package Report	Use this command to generate a report on the currently selected Package. The 'Generate Documentation' window will be displayed, using the current Package name as the default output filename. This window is used to select the report template, style-sheet and cover page. It also allows you to specify a range of filters and other options that will affect the generated report.
Generate Element Report	Use this command to generate a report on the currently selected element or elements. The 'Generate Documentation' window will be displayed. This window is used to select the report template, style-sheet and cover page. It also allows you to specify a range of filters and other options that will affect the generated report.
Generate Diagram Report	Use this command to generate a report of the diagrams within the currently selected Package hierarchy. The 'Generate Documentation' window will be displayed, with the system template 'Diagram Report' selected as the default. The 'Diagram Report' template generates only images of the model diagrams. You can use the 'Generate Documentation' window to select a different report template, style-sheet or cover page. It also allows you to specify a range of filters and other options that will affect the generated report. The current Package name is used as the default output filename.
Edit Report Templates	This command opens the Document Template Design window. The Document Template Designer is used to create and edit report templates that

	<p>define:</p> <ul style="list-style-type: none"> • The model components to report on • The information to extract on each component and • The styles and layout of the report <p>It can also be used to design Stylesheets, Cover Pages and Tables of Contents.</p>
Print Diagram	<p>Displays the 'Print' window, for the currently open diagram.</p> <p>Use the window to select the printer device, set printer properties and specify the number of copies to print.</p> <p>Click on 'OK' to print the diagram.</p>
Save Diagram as Image	<p>Creates an image of the currently open diagram and saves that image to a file of your choosing.</p>

Custom and Dynamic Reports

The 'Custom and Dynamic Reports' group of commands allows you to create and view documents in Enterprise Architect's Document Editor window.

Option	Description
Create a Custom Document	<p>Displays the 'Create Custom Document' window, to create a 'Custom Document' artifact in the currently selected Package.</p> <p>Custom Documents provide a way to include dynamic content that is dragged into the document from the Browser window, including Packages, diagrams, elements and features. Every time you open the document the content is dynamically refreshed from the model objects you have included and from the template instructions.</p>
Show Dynamic Preview	<p>Opens the 'Dynamic Document View' window.</p> <p>The 'Dynamic Document' view in the main work area helps you to instantly generate a document on a selected element, using one of a range of templates to immediately display the information you require in the most appropriate structure and format. The document can be printed, but is not stored electronically - it is dynamically generated for the current element whenever you select the view and when you change the template. You cannot edit the document contents in the view.</p>
Open a Document File	<p>Opens a document, selected from the file system, in Enterprise Architect's code or document editor window.</p>
New Document File	<p>Opens a new, empty document that can be saved to your file system. (This document is not saved within your Enterprise Architect model.)</p> <p>The Document Editor window and 'Document Edit' ribbon are displayed, and the new document is opened for editing in the editor window.</p> <p>When saving the document, a 'File Chooser' dialog is displayed, allowing you to specify a filename and folder for creating the new file on your file system.</p>

Model Interchange

The 'Model Interchange' list of commands provides facilities for exporting and importing model data to and from XML files, to support sharing models with other Enterprise Architect projects and with other modeling tools.

Option	Description
RAS (Reusable Asset Service)	The Reusable Asset Service (RAS) provides a convenient mechanism for modelers to distribute or download reusable model structures, as well as project baselines. The shared repository is accessible via a Pro Cloud Server connection, making it accessible by distributed teams.
Project Transfer	The Project Data Transfer feature supports transferring the full set of data from one repository into another repository, as an overwrite process. It supports these types of transfer: <ul style="list-style-type: none"> • A file repository to a DBMS repository • A DBMS repository to an existing project file • A DBMS repository to another DBMS repository • A file repository to a file repository
Full Model Export (native)	The Full Model Export (native) option provides a Project Transfer by exporting the current project to Native XML. The export process will generate multiple Native XML files, representing the data of the project. This can then be imported to another repository using the Full Model Import (Native) option.
Full Model Import (native)	The Full Model Import (native) option imports a set of Native XML files generated by the Full Model Export (native) option.
Export Package to XMI	This option is used to export a Package-tree from your model to a file in one of several XMI (XML-based) or Native formats. The exported file contains all the information required for performing Enterprise Architect-to-Enterprise Architect transfers, as well as for options exporting to other modeling tools.
Import Package from XMI	This command is for importing a Package, or Package hierarchy, from an XML file containing model information in XMI format. The file will have been created by export from Enterprise Architect or from some other compatible modeling tool. The new Package will be imported as a child of the currently selected Package.
Publish as Other Format	Displays the Publish Model Package window, which allows you to export the selected Package to a file in one of several XML formats. The available formats allow users to import the file into other modeling tools.
CSV Import/Export	This command displays the CSV Import/Export window. Within Enterprise Architect, you can import and export information on elements to and from comma-separated value (CSV) text files. The CSV Import/Export window is used to select the CSV specification that defines <i>what</i> will be exported (which element properties) and the file that it will be exported to, or imported from.
CSV Specification	This command displays the CSV Import/Export Specification window, with which you can define a CSV import/export specification. The specification defines the: <ul style="list-style-type: none"> • Fields from the spreadsheet in the order they are imported or exported • Source or target filename (optional) and

	<ul style="list-style-type: none"> • Delimiter between columns
Glossary	<p>Opens the Project Glossary View.</p> <p>The Model, or Project, Glossary consists of a list of defined terms for your project. The Project Glossary View provides options to review the terms of different types already defined for a model.</p>

Model Control

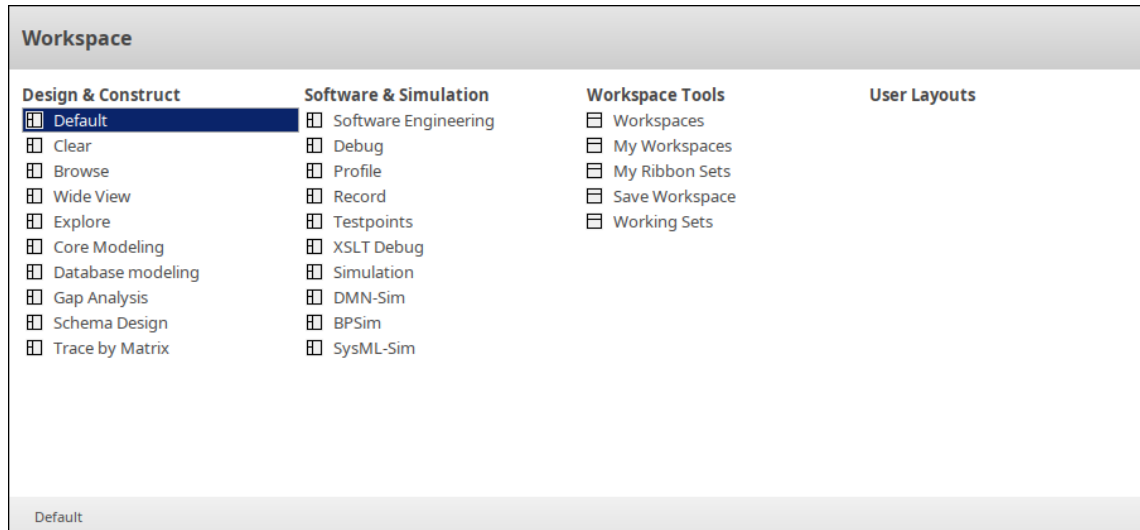
The 'Model Control' commands are related to the change management of your model data and include Version Control configuration as well as Auditing.

Option	Description
Simple Package Control	<p>Displays the 'Package Control Options' dialog.</p> <p>In order to configure a Package to save and load in Native/XMI format to a named file, you use the 'Package Control Options' dialog to flag the Package as being controlled and to set a number of options. These options include setting the filename to save to/load from, the type of Native/XMI to import and export, and whether to export and/or import the Native/XMI in a batch process.</p>
Model Version Control	<p>Displays the 'Version Control Settings' dialog.</p> <p>To set up a Version Control configuration on your model, you define a number of settings that control how the status of your model is communicated to your Version Control system. You define these settings using the 'Version Control Settings' dialog.</p>
Package Version Control	<p>Displays the 'Package Control Options' dialog.</p> <p>Once your Version Control application is set up and you have Version Control configurations in place, you can use the 'Package Control Options' dialog to place the individual Packages in your model under Version Control. To put a Package under Version Control, you:</p> <ul style="list-style-type: none"> • Flag the Package as a controlled Package • Specify the Version Control configuration to control it and • Associate an XMI file with the Package
Model Options/Preferences	<p>Opens the 'Manage Model Options' dialog for configuring a number of model or project based options covering Enterprise Architect features. These include:</p> <ul style="list-style-type: none"> • General options • Baseline configuration for RAS storage • Cloud administration • Translation configuration • Collaboration across projects • Review of Status locks • Source Code Engineering settings
Auditing	<p>Opens the Auditing view, which covers the audit configuration and view of the audit history. Auditing records model changes, including when the change occurred and who made it. It records changes to Packages, elements, features, connectors and</p>

	diagrams, detailing the creation, modification and deletion of these items.
Export Reference Data	Opens the 'Export Reference Data' dialog. Reference data includes meta-information for properties and base values, as well as option configurations, document templates, tool features and more. You can conveniently export all or specific parts of your model reference data to an .XML file for exchanging with other repositories.
Import Reference Data	Opens the 'Import Reference Data' dialog for importing meta-information into your model from an .XML file that was exported out of another model or from an iteration of the current model.

The Workspace Window Selector

The Workspace Window selector provides access to commands for applying a wide range of predefined workspace layouts. Each layout name is a command that, when you click on it, opens and arranges various windows, positioned, grouped and sized in a manner that facilitates the workflow of the task at hand.



The workspace commands are organized into four sets, as described in the tables of this topic.

Design and Construct

This set of commands provides access to workspace layouts tailored for use in general modeling tasks as well as some specific tasks, such as database modeling or designing XML Schemas.

Options	Description
Default	<p>Applies the 'Default' workspace layout, which is a good starting point for a range of general modeling tasks.</p> <p>These windows are displayed:</p> <ul style="list-style-type: none"> • Main work area (for diagrams) • Browser and Inspector windows grouped together • Properties and Notes windows
Clear	<p>Applies the 'Clear' workspace layout. This clears the desktop by closing all 'docked' windows. You can then open the specific windows that you want.</p> <p>In this layout, only the menu ribbon and the main work area are visible.</p>
Browse	<p>Applies the 'Browse' workspace layout, designed for browsing the model and its element properties.</p> <p>These windows are displayed:</p> <ul style="list-style-type: none"> • Main work area • Browser, Inspector and Focus windows grouped together
Wide View	<p>Applies the 'Wide View' workspace layout.</p> <p>This layout has the main work area occupying the full width of the application desktop. Other open windows are 'auto-hidden'.</p>

	<p>These windows are displayed:</p> <ul style="list-style-type: none"> • Main work area • Browser and Inspector windows grouped together ('auto-hidden' to the left) • Properties and Notes windows ('auto-hidden' to the right)
Explore	<p>Applies the 'Explore' workspace layout, for use in 'exploring' the features of your model.</p> <p>These windows are displayed:</p> <ul style="list-style-type: none"> • Main work area • Browser, Inspector and Focus windows grouped together • Responsibility and Maintenance windows grouped together • Summary window • Discuss & Review and Chat & Mail windows grouped together
Core Modeling	<p>Applies the 'Core Modeling' workspace layout, for use when performing core modeling tasks.</p> <p>These windows are displayed:</p> <ul style="list-style-type: none"> • Main work area • Browser and Inspector windows grouped together • Properties and Notes windows grouped together • Pan & Zoom, Layout Tools and Filters & Layers windows grouped together
Database Modeling	<p>Applies the 'Database Modeling' workspace layout, for use when performing Database Modeling tasks.</p> <p>These windows are displayed:</p> <ul style="list-style-type: none"> • The Database Builder window, occupying the main work area • Browser and Inspector windows grouped together • Properties and Notes windows
Gap Analysis	<p>Applies the 'Gap Analysis' workspace layout, for use when performing Gap Analysis.</p> <p>These windows are displayed:</p> <ul style="list-style-type: none"> • The Gap Analysis Matrix, occupying the main work area • Browser and Inspector windows grouped together (on the left) • Properties window (also on the left)
Schema Design	<p>Applies the 'Schema Design' workspace layout, for use when modeling Schema Designs.</p> <p>These windows are displayed:</p> <ul style="list-style-type: none"> • The Schema Composer, occupying the main work area • Browser and Inspector windows grouped together • Properties and Notes windows
Trace by Matrix	<p>Applies the 'Trace by Matrix' workspace layout, which uses the Relationship Matrix for tracing relationships between model elements.</p> <p>These windows are displayed:</p> <ul style="list-style-type: none"> • The Relationship Matrix, occupying the main work area • Browser and Inspector windows grouped together

	<ul style="list-style-type: none"> • Properties and Notes windows
--	--

Software & Simulation

This set of commands provides access to workspace layouts tailored for use in performing specific tasks in software engineering and model simulation.

Options	Description
Software Engineering	<p>Applies the 'Software Engineering' workspace layout, for use when performing general Software Engineering tasks.</p> <p>These windows are displayed:</p> <ul style="list-style-type: none"> • Main work area • Browser, Inspector and Execution Analyzer windows grouped together as tabs • Features window (contains pages for features such as attributes, operations and receptions) • Properties and Notes windows
Debug	<p>Applies the 'Debug' workspace layout, for use when debugging software.</p> <p>These windows are displayed:</p> <ul style="list-style-type: none"> • Main work area • Browser, Inspector and Execution Analyzer windows grouped together • Breakpoints & Markers, Watches, Modules and Memory Viewer windows grouped together • Debug, Local and Call Stack windows grouped together
Profile	<p>Applies the 'Profile' workspace layout, for use when profiling software.</p> <p>These windows are displayed:</p> <ul style="list-style-type: none"> • Main work area • Browser and Execution Analyzer windows grouped together • Profile window
Record	<p>Applies the 'Record' workspace layout, for use when recording program execution.</p> <p>These windows are displayed:</p> <ul style="list-style-type: none"> • Main work area • Browser and Execution Analyzer windows grouped together • Record & Analyze window
Testpoints	<p>Applies the 'Testpoints' workspace layout.</p> <p>These windows are displayed:</p> <ul style="list-style-type: none"> • Main work area • Browser and Execution Analyzer windows grouped together • Testpoints window
XSLT Debug	<p>Applies the 'XSLT' workspace layout, for use when debugging XSLT.</p> <p>These windows are displayed:</p>

	<ul style="list-style-type: none"> • XSLT Debugger window open in main work area • Browser and Execution Analyzer windows grouped together • System Output window at the bottom of the screen
Simulation	<p>Applies the 'Simulation' workspace layout, for use when running simulations. These windows are displayed:</p> <ul style="list-style-type: none"> • Main work area • Browser, Inspector and Execution Analyzer windows grouped together • Simulation and Simulation Events windows • Locals and Call Stack windows
DMN-Sim	<p>Applies the 'DMN-Sim' workspace layout, for use when creating or running DMN simulations. These windows are displayed:</p> <ul style="list-style-type: none"> • Main work area • Browser, Inspector and Execution Analyzer windows grouped together • DMN Simulation and DMN Expression windows
BPSim	<p>Applies the 'BPSim' workspace layout, for use when working with Business Process Simulations. These windows are displayed:</p> <ul style="list-style-type: none"> • Main work area • Browser and Inspector windows grouped together • Diagram Toolbox • Properties window • Configure BPSim window
SysML-Sim	<p>Applies the 'SysML-Sim' workspace layout, for use when working with SysML Simulations. These windows are displayed:</p> <ul style="list-style-type: none"> • Configure SysML Simulation window in main work area • Browser and Inspector windows grouped together • Diagram Toolbox • Properties window • System Output window

Workspace Tools

The commands in this list provide access to facilities for customizing and managing workspaces, menu ribbons and working sets.

Options	Description
Workspaces	<p>Displays the 'Workspaces' tab of the 'Workspaces Layout' window.</p> <p>This window allows you to select from a range of predefined workspace layouts and apply one of them, such that the application desktop displays a particular set of</p>

	windows and toolbars, arranged in a way to facilitate certain modeling activities.
My Workspaces	Opens the 'My Workspaces' tab on the 'Workspace Layout' window, enabling you to select, create and maintain the workspaces that you use, as a means of organizing all the tools appropriate to your areas of work.
My Ribbon Sets	Opens the 'My Ribbon Sets' tab of the 'Workspaces Layout' window. This tab allows you to set a filter on the ribbons and the panels in the ribbons, so as to provide a clearer focus on only the core features that you use and eliminate any distracting features outside your domain of work.
Save Workspace	Saves the current Workspace layout as a new customized Workspace.
Working Sets	Opens the 'Working Sets' tab of the 'Focus' window. These Working Sets are saved outlays of what you want opened in Enterprise Architect. Working Sets can be manually created or a capture of your current work environment.

User Layouts

The *User Layouts* list presents a list of the workspace layouts you have created yourself.

Option	Description
<empty>	This list remains empty until you have defined and saved some workspace layouts of your own.

